

# ***INTERSTATE***

---

**T R A I L E R S , I N C .**

**PARTS  
MANUAL  
FOR  
20TDT, 24TDT &  
20TDA, 24TDA  
TITLT TRAILERS**





**A note from Interstate Trailers to our valued dealers and customers.**

**The scope of this manual is to provide parts and service information for year model 1998 and newer small (10-12 ton) tilt series trailers. We have made our best effort to document the common replacement parts for these trailers. However, Interstate Trailers Inc. builds many custom trailers which may be equipped with parts and options not listed in this manual. Also, trailers older than model year 1998 have some differences and will require help from the factory staff to locate the correct parts. If you encounter such a situation please call our factory at 1-800-433-5384 between the hours of 8 a.m. to 5 p.m. standard time, M-F excluding holidays. Interstate Trailers recommends that you always have your VIN number (trailer serial) ready when calling a dealer or the factory to assist in locating the correct parts for your trailer. Interstate Trailers will make every effort to help find the correct replacement parts for your trailer and will strive to make your ownership experience as trouble free as possible.**

**\*In April of 2000 Dexter Axle made a design change to the electric brakes used on all trailers with electric brakes listed in this catalog. This manual covers only the new style (post 04/2000) brakes. The difference is the construction of the backing plate, pre 04/2000 the backing plate was a stamped sheet metal plate and post 04/2000 the backing plate changed to a sand cast steel plate. The brake components differ between the types so please check your trailer prior to ordering parts to insure accuracy.**

### **Contact Information**

**Interstate Trailers Inc.  
1101 Heritage parkway  
Mansfield, TX 76063**

**1-800-433-5384 phone  
817-453-2672 parts department fax  
[www.interstatetrailers.com](http://www.interstatetrailers.com) web address**

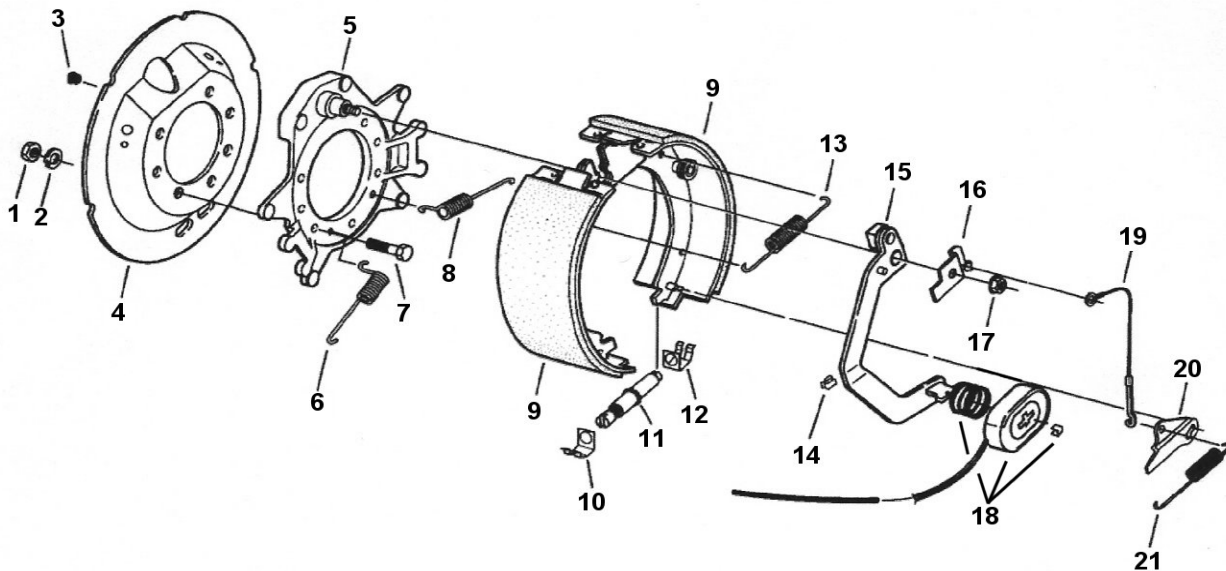
**Thank you!  
The Interstate Trailers team.**



## TDT/TDA PARTS MANUAL INDEX

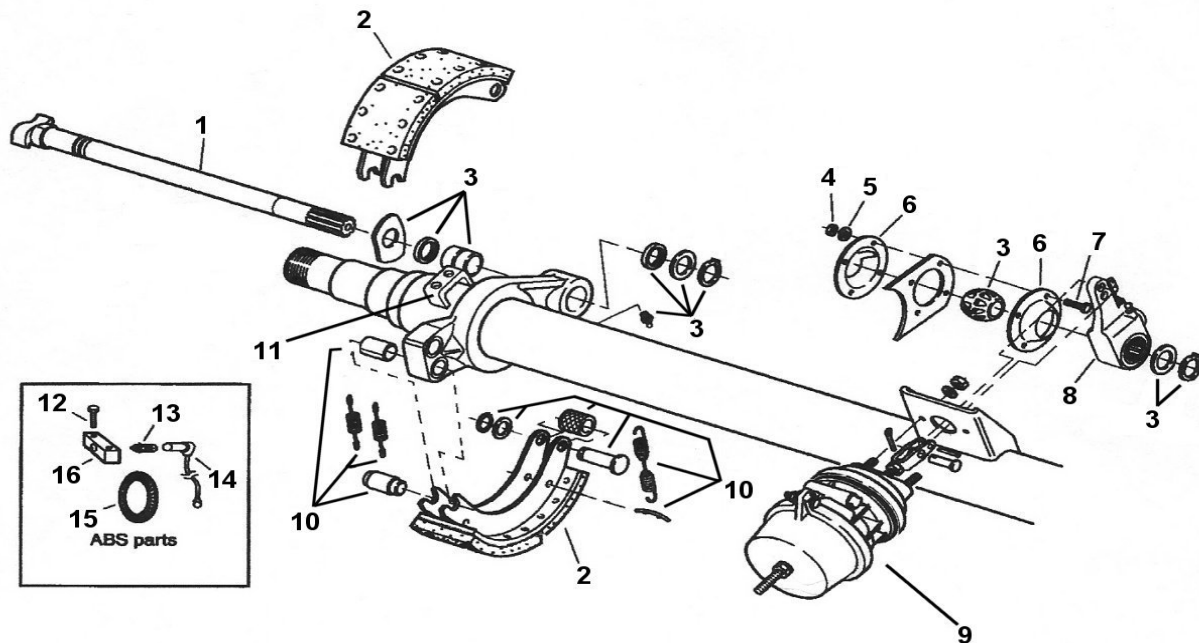
SUBJECT	PAGE
20 TDT ELECTRIC BRAKE COMPONENTS	1
20 TDA AIR BRAKE COMPONENTS	2
20 TDT/TDA HUB/DRUM COMPONENTS	3
24 TDT ELECTRIC BRAKE COMPONENTS	4
24 TDA AIR BRAKE COMPONENTS	5
24 TDT/TDA HUB/DRUM COMPONENTS	6
SUSPENSION COMPONENTS	7
UNDER RIDE BUMPER SYSTEM	8
AIR PLUMBING	9
TILT CUSHION CYLINDER	10
TILT LATCH PARTS	11
LANDING GEAR	12
PINTLE HITCH AND COMPONENTS	13
GOOSENECK HITCH	14
TDT HARNESS DIAGRAM	15
TDT WIRING DIAGRAM	16
TDA HARNESS DIAGRAM	17
TDA WIRING DIAGRAM	18
LIGHTING	19
DECAL KIT AND PAINT CODES	20
MISCELLANEOUS PARTS	21
MAINTENANCE SCHEDULE	22

## 20TDT ELECTRIC BRAKE



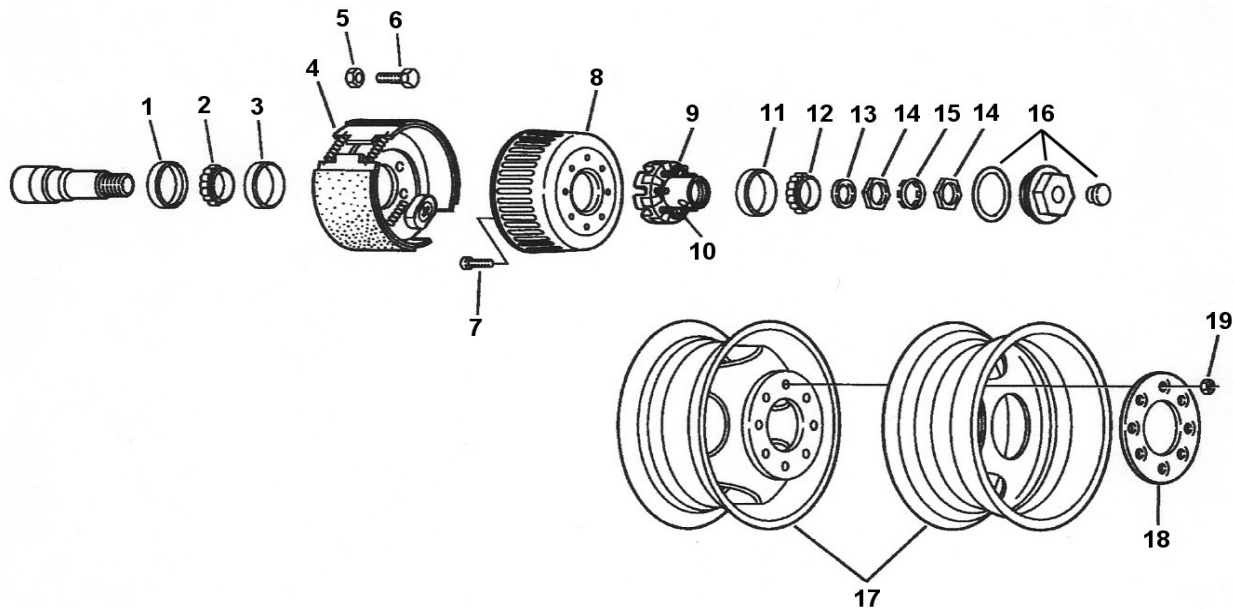
ITEM#	QTY PER TRAILER	DESCRIPTION	PART NUMBER
1	28	BRAKE MOUNTING NUT	5295
2	28	BRAKE MOUNTING LOCK WASHER	5301
3	4	WIRE GROMMET	4843
4	4	DUST SHIELD	6207-1
5	4	CAST BACKING PLATE	7750-1
6	4	CENTERING SPRING	7555
7	28	BRAKE MOUNTING BOLT	5297
8	4	CENTERING SPRING	7555
9	2	BRAKE SHOE KIT, ROADSIDE	7551-1
9	2	BRAKE SHOE KIT, CURBSIDE	7552-1
10	4	ADJUSTER CLIP, THREAD END	4613
11	2	BRAKE ADJUSTER, ROADSIDE	7534
11	2	BRAKE ADJUSTER, CURBSIDE	7535
12	4	ADJUSTER CLIP, BARREL END	4613-1
13	4	BRAKE SHOE RETURN SPRING	5335
14	12	WIRE CLIP	4846-1
15	2	ACTUATOR ARM, ROADSIDE	7553
15	2	ACTUATOR ARM, CURBSIDE	7554
16	2	ARM/SHOE RETAINER, ROADSIDE	7557
16	2	ARM/SHOE RETAINER, CURBSIDE	7558
17	4	FLANGE NUT	7543
18	4	MAGNET, KIT	7555-1
19	4	ADJUSTER CABLE	7547-1
20	2	ADJUSTER LEVER, ROADSIDE	7546-1
20	2	ADJUSTER LEVER, CURBSIDE	7548-1
21	4	ADJUSTER LEVER SPRING	7536-1

## 20TDA AIR BRAKES



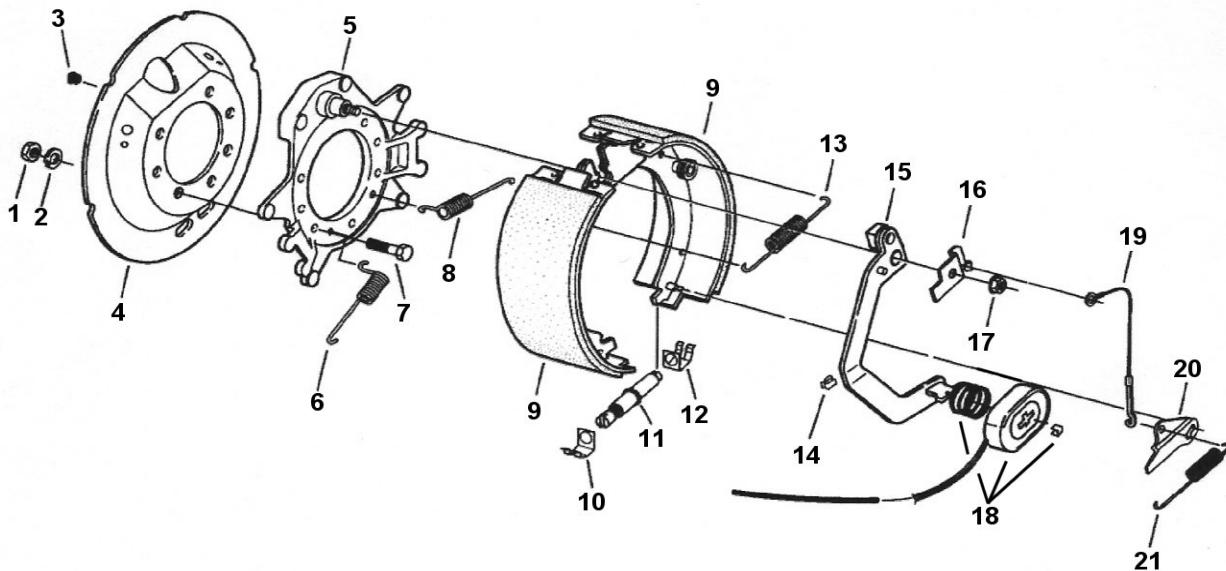
ITEM#	QTY PER TRAILER	DESCRIPTION	PART NUMBER
1	2	CAMSHAFT, ROADSIDE -28 SPLINE	5230
1	2	CAMSHAFT, CURBSIDE -28 SPLINE	5231
2	8	BRAKE SHOE, 12.25 X 4" "PQ"	6237
3	4	BRAKE CAMSHAFT REBUILD/SERVICE KIT	6215
4	16	CAMSHAFT RETAINER PLATE NUT	6290
5	16	CAMSHAFT RETAINER PLATE LOCKWASHER	6289
6	8	CAMSHAFT RETAINER PLATE	6288
7	16	CAMSHAFT RETAINER PLATE BOLT	6287
8	4	SLACK ADJUSTER, 28 SPLINE AUTOMATIC	5207
9	4	SPRING BRAKE CHAMBER 20/24	5209
10	4	BRAKE SHOE HARDWARE KIT	6235
11	2	LOWER ABS MOUNTING BLOCK	7000
12	4	ABS SENSOR MOUNTING BLOCK BOLT	7004
13	2	ABS SENSOR RETAINER CLIP	7002
14	2	ABS SENSOR, 90 DEGREE WIRE	7003
15	2	ABS TONE RING	7006
16	2	UPPER ABS SENSOR MOUNTING BLOCK	7001

## 20TDT HUB & DRUM



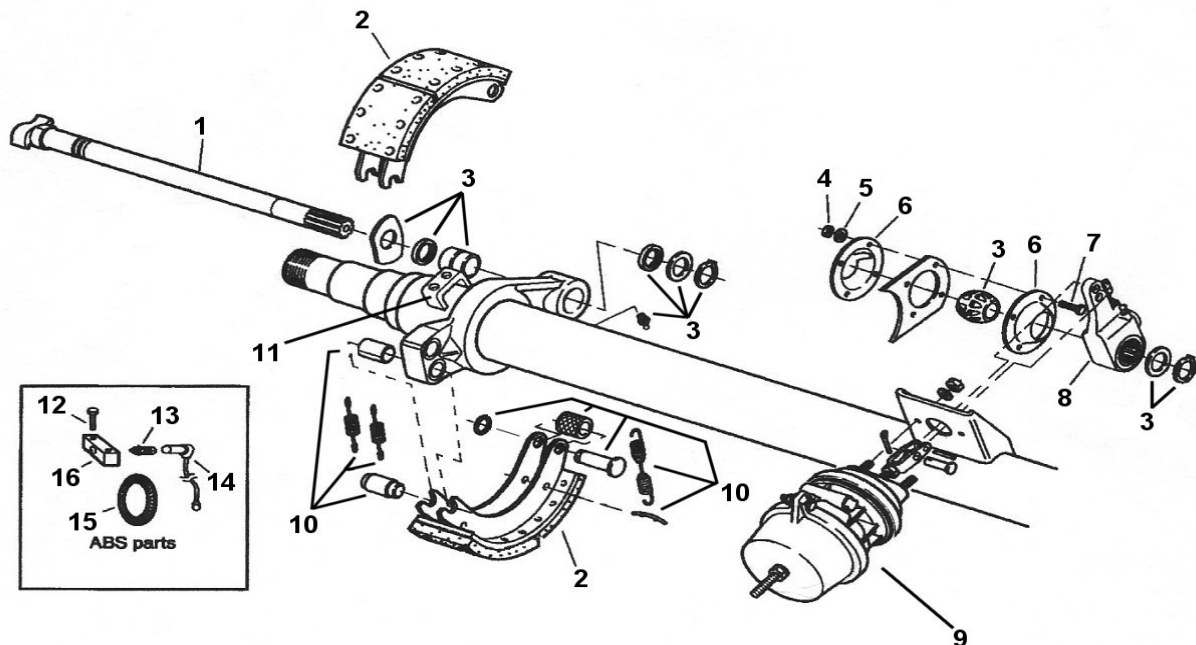
ITEM#	QTY PER TRAILER	DESCRIPTION	PART NUMBER
1	4	HUB OIL SEAL	6010
2	4	INNER BEARING CONE	7493
3	4	INNER BEARING CUP	7494
4	2	COMPLETE ELEC. BRAKE ASSEMBLY, ROAD SIDE	7559
4	2	COMPLETE ELEC. BRAKE ASSEMBLY, CURB SIDE	7560
5	28	BRAKE MOUNTING NUT	5295
6	28	BRAKE MOUNTING BOLT	5297
7	32	DRUM ATTACHING BOLT	7518
8	4	BRAKE DRUM	7561
9	4	HUB, WITH CUPS AND STUDS	7562
10	32	WHEEL STUD	7520
11	4	OUTER BEARING CUP	7496
12	4	OUTER BEARING CONE	7495
13	4	SPINDLE WASHER	5294
14	8	BEARING LOCKNUT	7511
15	4	SPINDLE LOCK WASHER	7512
16	4	HUB OIL CAP ASSEMBLY	7226
17	8	DUAL WHEEL, 16" X 6"	5151
18	4	WHEEL CLAMP RING	5283
19	32	WHEEL NUT	7517

## 24 TDT ELECTRIC BRAKE



ITEM#	QTY PER TRAILER	DESCRIPTION	PART NUMBER
1	28	BRAKE MOUNTING NUT	5295
2	28	BRAKE MOUNTING LOCK WASHER	5301
3	4	WIRE GROMMET	4843
4	4	DUST SHIELD	6207-2
5	4	CAST BACKING PLATE	7750-1
6	4	CENTERING SPRING	7555
7	28	BRAKE MOUNTING BOLT	5297
8	4	CENTERING SPRING	7555
9	2	BRAKE SHOE KIT, ROADSIDE	7570-1
9	2	BRAKE SHOE KIT, CURBSIDE	7571-1
10	4	ADJUSTER CLIP, THREAD END	4613
11	2	BRAKE ADJUSTER, ROADSIDE	7534
11	2	BRAKE ADJUSTER, CURBSIDE	7535
12	4	ADJUSTER CLIP, BARREL END	4613-1
13	4	BRAKE SHOE RETURN SPRING	5335
14	12	WIRE CLIP	4846-1
15	2	ACTUATOR ARM, ROADSIDE	7537-1
15	2	ACTUATOR ARM, CURBSIDE	7538-1
16	2	ARM/SHOE RETAINER, ROADSIDE	7557
16	2	ARM/SHOE RETAINER, CURBSIDE	7558
17	4	FLANGE NUT	7543
18	4	MAGNET, KIT	7539-1
19	4	ADJUSTER CABLE	7547-1
20	2	ADJUSTER LEVER, ROADSIDE	7546-1
20	2	ADJUSTER LEVER, CURBSIDE	7548-1
21	4	ADJUSTER LEVER SPRING	7536-1

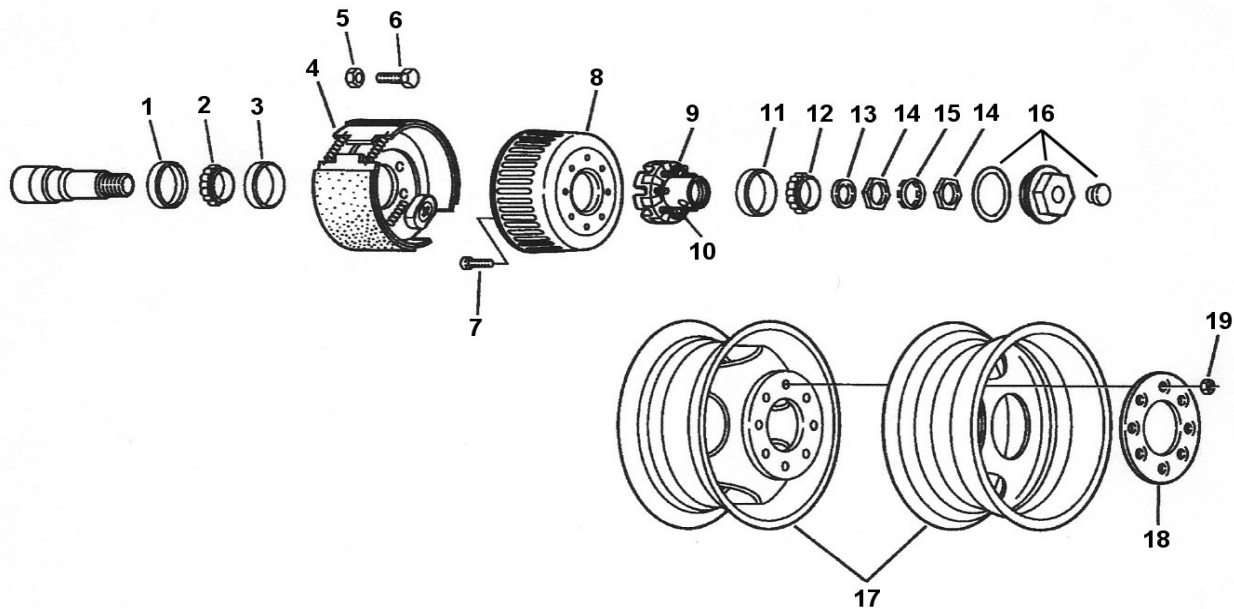
## 24 TDA AIR BRAKES



ITEM#	QTY PER TRAILER	DESCRIPTION	PART NUMBER
1	2	CAMSHAFT, ROADSIDE -28 SPLINE	5210
1	2	CAMSHAFT, CURBSIDE -28 SPLINE	5210-1
2	8	BRAKE SHOE, 12.25 X 5" "PQ"	6236
3	4	BRAKE CAMSHAFT REBUILD/SERVICE KIT	6215
4	16	CAMSHAFT RETAINER PLATE NUT	6290
5	16	CAMSHAFT RETAINER PLATE LOCKWASHER	6289
6	8	CAMSHAFT RETAINER PLATE	6288
7	16	CAMSHAFT RETAINER PLATE BOLT	6287
8	4	SLACK ADJUSTER, 28 SPLINE AUTOMATIC	5207
9	4	SPRING BRAKE CHAMBER 24/30	6293
10	4	BRAKE SHOE HARDWARE KIT	6235
11	2	LOWER ABS MOUNTING BLOCK	7000
12	4	ABS SENSOR MOUNTING BLOCK BOLT	7004
13	2	ABS SENSOR RETAINER CLIP	7002
14	2	ABS SENSOR, 90 DEGREE WIRE	7003
15	2	ABS TONE RING	7006
16	2	UPPER ABS SENSOR MOUNTING BLOCK	7001



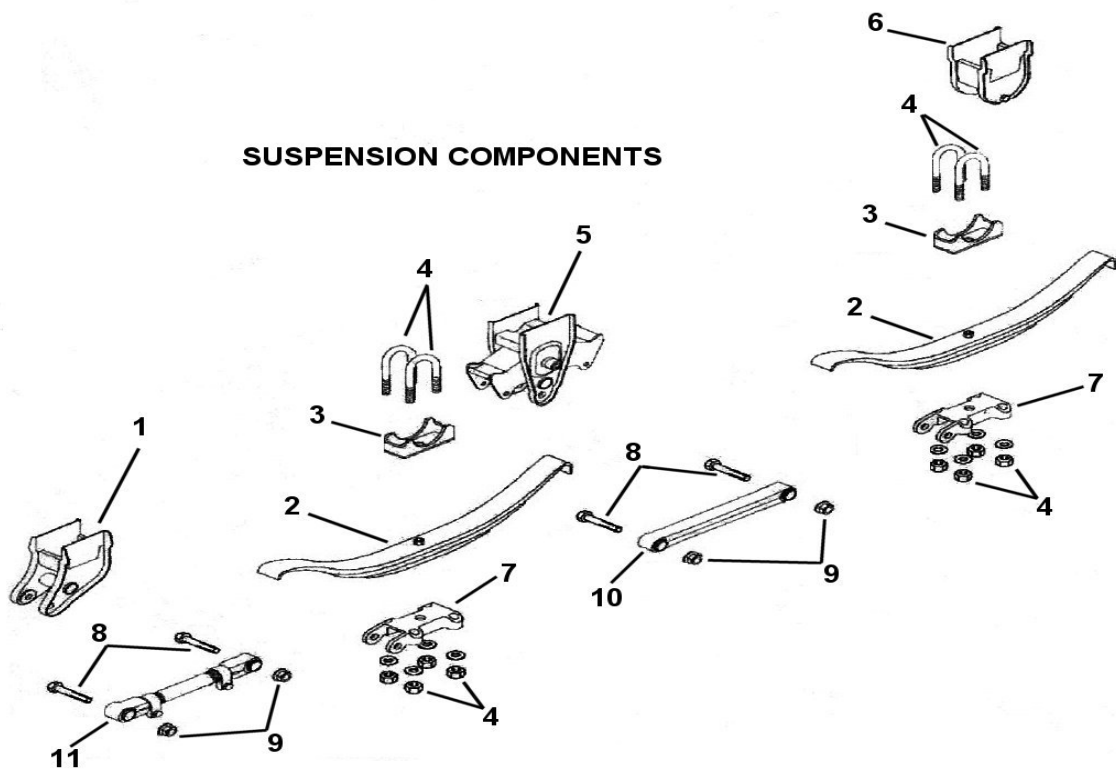
## 24TDT HUB & DRUM



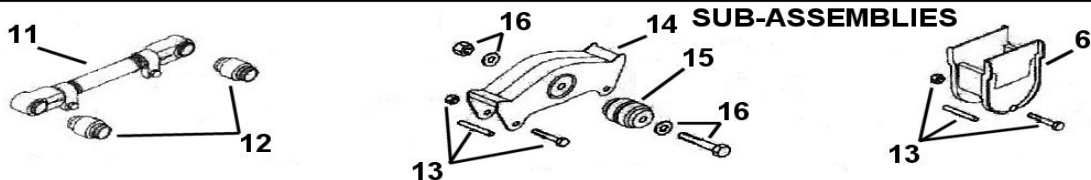
ITEM#	QTY PER TRAILER	DESCRIPTION	PART NUMBER
1	4	HUB OIL SEAL	6010
2	4	INNER BEARING CONE	7503
3	4	INNER BEARING CUP	7504
4	2	COMPLETE ELEC. BRAKE ASSEMBLY, ROAD SIDE	7505
4	2	COMPLETE ELEC. BRAKE ASSEMBLY, CURB SIDE	7506
5	28	BRAKE MOUNTING NUT	5295
6	28	BRAKE MOUNTING BOLT	5297
7	32	DRUM ATTACHING BOLT	7518
8	4	BRAKE DRUM	7507
9	4	HUB, WITH CUPS AND STUDS	7508
10	32	WHEEL STUD	7520
11	4	OUTER BEARING CUP	7509
12	4	OUTER BEARING CONE	7510
13	4	SPINDLE WASHER	5294
14	8	BEARING LOCKNUT	7511
15	4	SPINDLE LOCK WASHER	7512
16	4	HUB OIL CAP ASSEMBLY	7226
17	8	DUAL WHEEL, 16" X 6"	5151
18	4	WHEEL CLAMP RING	5283
19	32	WHEEL NUT	7517

# TDT/TDA SUSPENSION

## SUSPENSION COMPONENTS

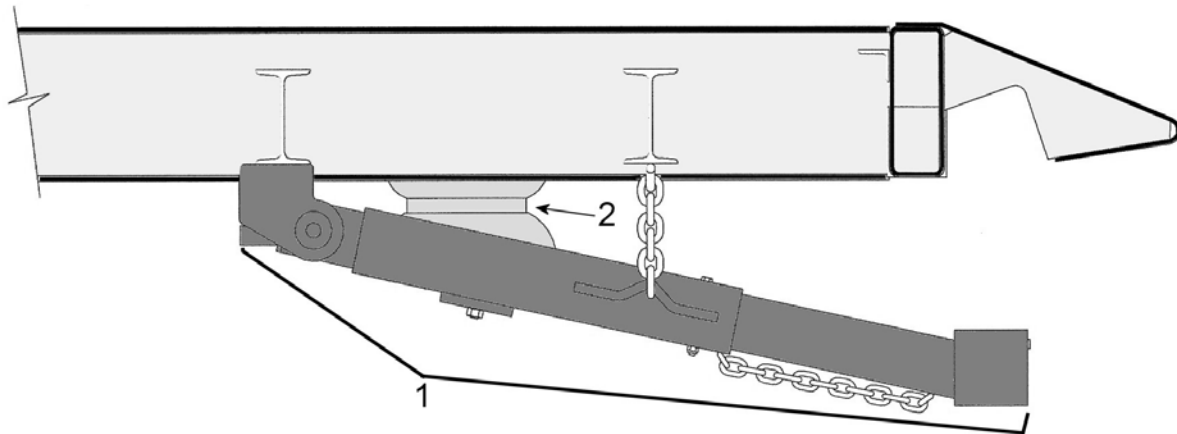


## SUB-ASSEMBLIES

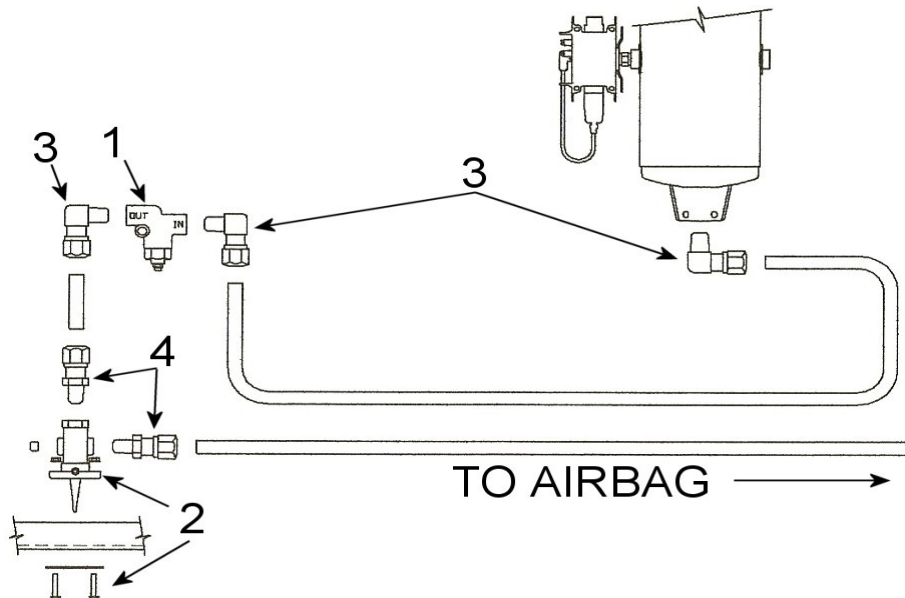


ITEM#	QTY PER TRAILER	DESCRIPTION	PART NUMBER
1	2	FRONT HANGER	5119
2	4	3-LEAF SPRING	5136
3	4	AXLE SEAT	5127
4	8	U-BOLT WITH NUTS AND WASHERS	5129
5	2	CENTER HANGER WITH EQUALIZER	5115
6	2	REAR HANGER	5120
7	4	BOTTOM PLATE	5128
8	8	TORQUE ARM BOLT	5133
9	8	TORQUE ARM NUT	5134
10	2	FIXED TORQUE ARM	5132
11	2	ADJUSTABLE TORQUE ARM	5131
12	8	TORQUE ARM BUSHING	5132-1
13	6	REBOUND BOLT WITH SLEEVE AND NUT	5125-3
14	2	EQUALIZER WITH BUSHING	5125
15	2	EQUALIZER BUSHING	5125-2
16	2	EQUALIZER BOLT KIT	5125-1

## UNDER RIDE BUMPER AND PLUMBING

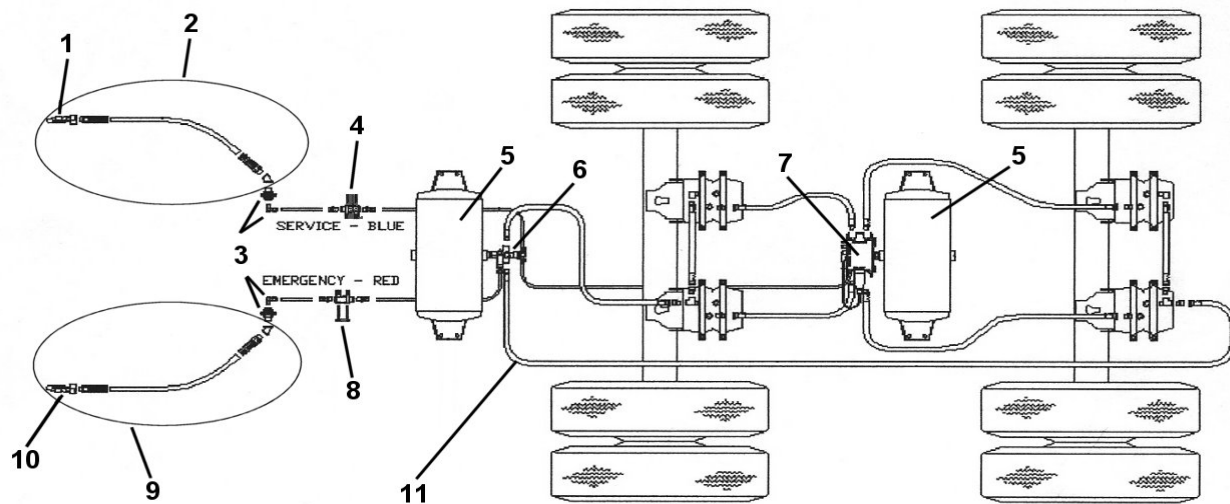


ITEM#	DESCRIPTION	PART NUMBER
1	UNDER RIDE BUMPER, SMALL TILTS	5684
2	AIR BAG, UNDER RIDE BUMPER	5685



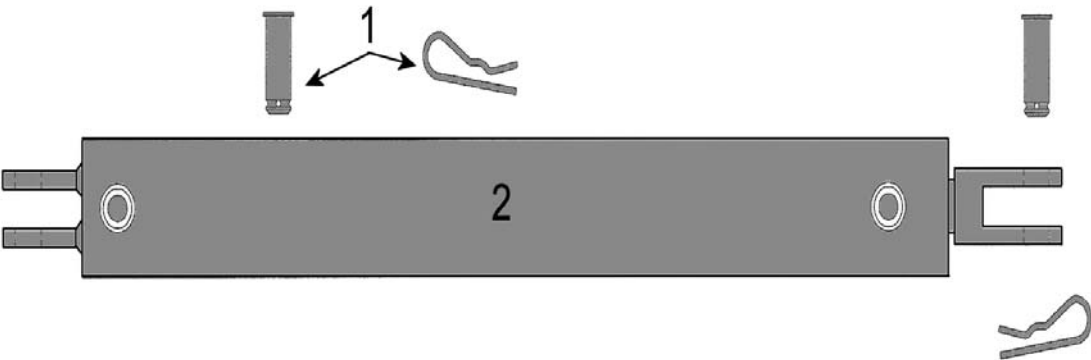
ITEM#	DESCRIPTION	PART NUMBER
1	REGULATOR, AIR BAG	6558-1
2	FLIP SWITCH, AIRBAG	6558
3	FITTING, 3/8 NPT-3/8 COMP 90 DEGREE	PP-200-E90-002
4	FITIING, 1/8 NPT-3/8 COMP STRAIGHT	PP-200-CON-006

## 20/24TDA AIR SYSTEM

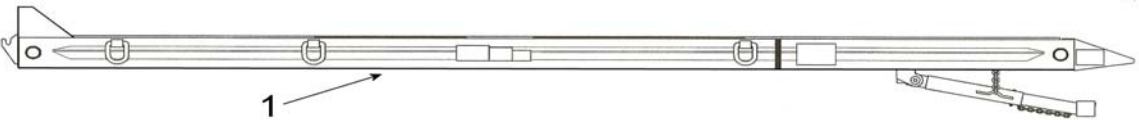


ITEM#	QTY PER TRAILER	DESCRIPTION	PART NUMBER
1	1	SERVICE GLADHAND	5361
2	1	SERVICE AIR HOSE ASM. W/GLADHAND & FITTINGS	5686
3	2	BULKHEAD FITTING AND ELBOW FITTING	5359
4	1	SERVICE AIR FILTER	5331-1
5	2	AIR TANK	5354
6	1	SPRING BRAKE CONTROL VALVE	5353-1
7	1	ABS VALVE/MODULE ASSEMBLY	5353-2
8	1	EMERGENCY AIR FILTER	5331
9	1	EMERGENCY AIR HOSE ASM. W/GLADHAND & FITTINGS	5687
10	1	EMERGENCY GLADHAND	5360
11		AIR HOSE, VARIOUS SIZES -CALL FACTORY	

# CUSHION CYLINDER AND BED



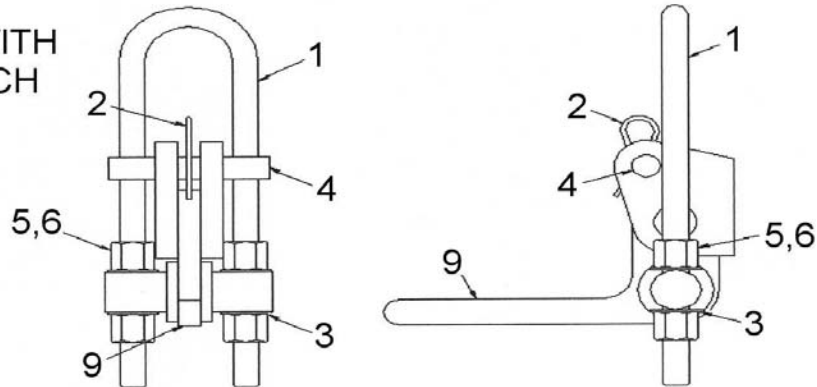
ITEM#	DESCRIPTION	PART NUMBER
1	CLEVIS PIN AND CLIP	5252
2	COMPLETE CYLINDER, INCLUDES 2 EA PINS & CLIPS	5246



ITEM#	DESCRIPTION	PART NUMBER
1	COMPLETE BED ASSEMBLY *SPECIAL ORDER, CALL FACTORY	6204

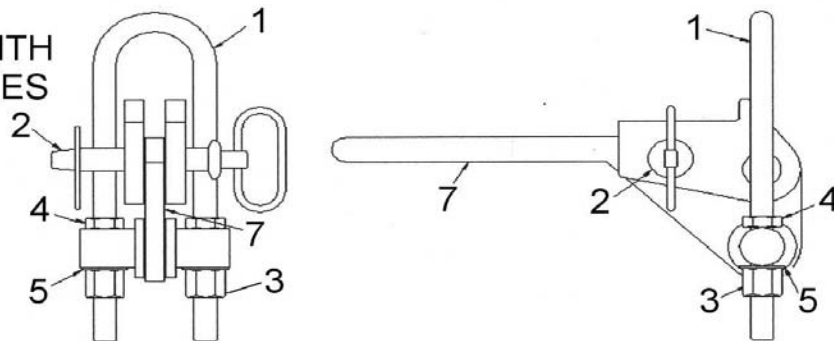
## TILT BED LATCH COMPONENTS

### TRAILERS WITH SINGLE LATCH



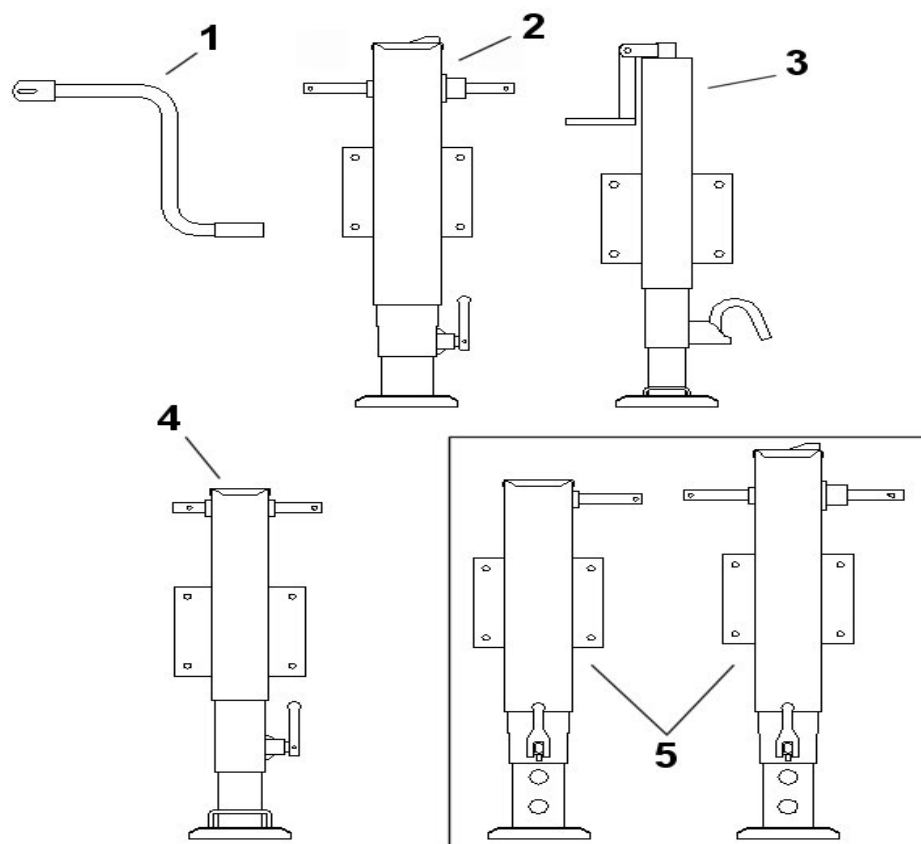
ITEM	DESCRIPTION	PART #
1	16" U Bolt	5257
2	Fab Locking Pin	5255
3	Washer	5256
4	Fab Locking Pin	5255
5	Nut	5366
6	Nut	5366
9	Handle	5370

### TRAILERS WITH DUAL LATCHES



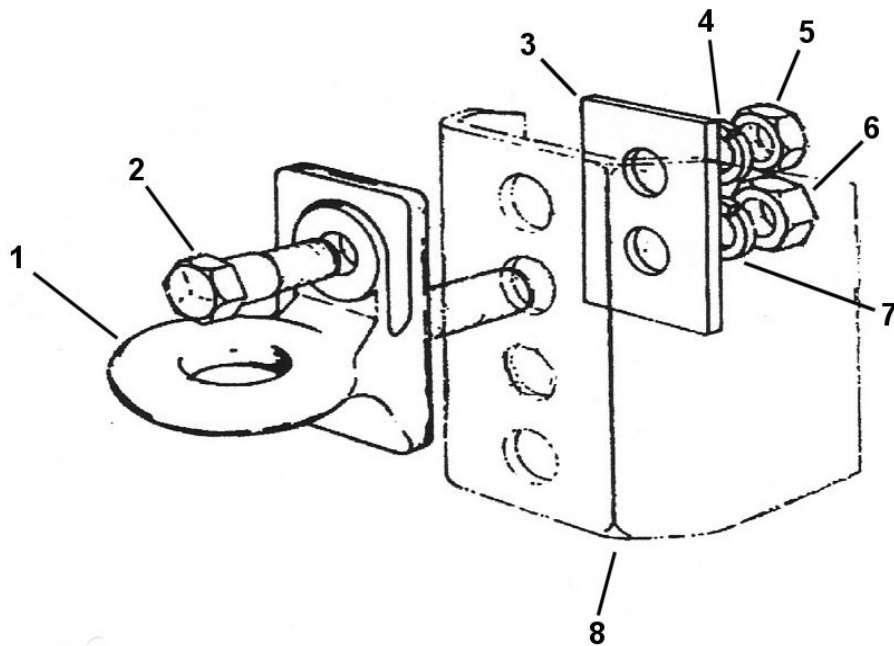
ITEM	DESCRIPTION	PART #
1	14" U Bolt	5253
2	Hitch Pin	6865
3	Nut	5366
4	Jamb Nut	5256-1
5	Washer	5256
7	Handle	5369

# LANDING GEAR



ITEM#	DESCRIPTION	PART NUMBER
1	JACK HANDLE, FITS ALL SIDEWIND JACKS	5648
2	TWO SPEED 25K JACK WITH DROP FOOT	7129
3	10K TOPWIND JACK WITH DROP FOOT	7114
4	12K SIDE WIND JACK WITH DROP FOOT	7130
5	25K TWO SPEED JACK SET INCLUDES BOTH JACKS, CROSS SHAFT, HANDLE, AND HEADBOARD MOUNTS	7125-1

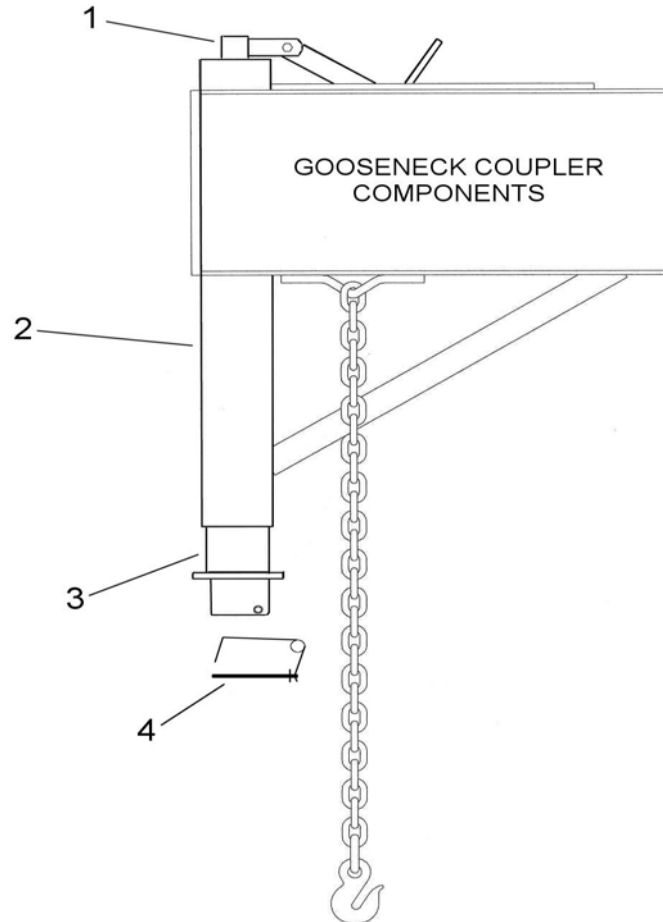
# PINTLE HITCH COMPONENTS



ITEM#	DESCRIPTION	PART NUMBER
1	PINTLE HITCH, NO HARDWARE	4727
1	PINTLE HITCH, WITH HARDWARE (2-7)	4790
2	HITCH BOLT	4734
3	HITCH BACKING PLATE	5254
4	1.5" LOCK WASHER	4731
5	1.5" NUT	4730
6	1.75" LOCK WASHER	4728
7	1.75" NUT	4729
8	NOSE PLATE, WITH CHAIN ANCHORS (NOT SHOWN)	6126-3



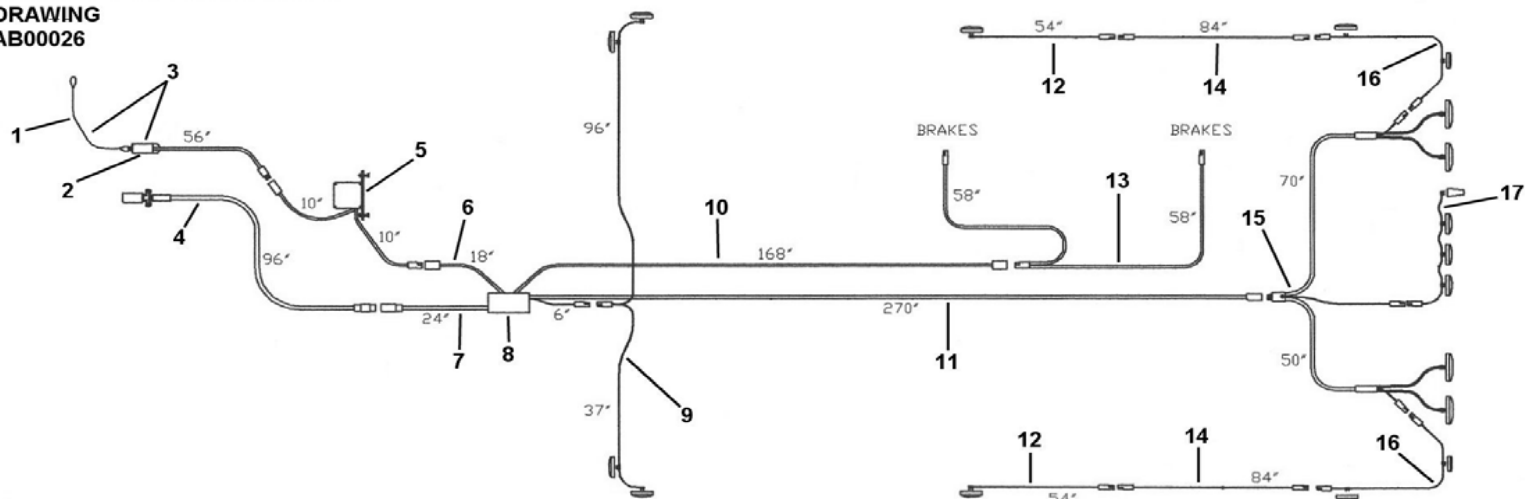
# GOOSENECK HITCH PARTS



ITEM#	DESCRIPTION	PART NUMBER
1	HANDLE, 1" INPUT SHAFT	7140-1
2	HITCH, COMPLETE ASSEMBLY INCLUDES ITEMS 1,3,4	7124
3	INNER LEG, WITH MANUAL COUPLER	7127
4	BAIL PIN, FOR MANUAL COUPLER	7168

# TDT/GTDT HARNESS DIAGRAM

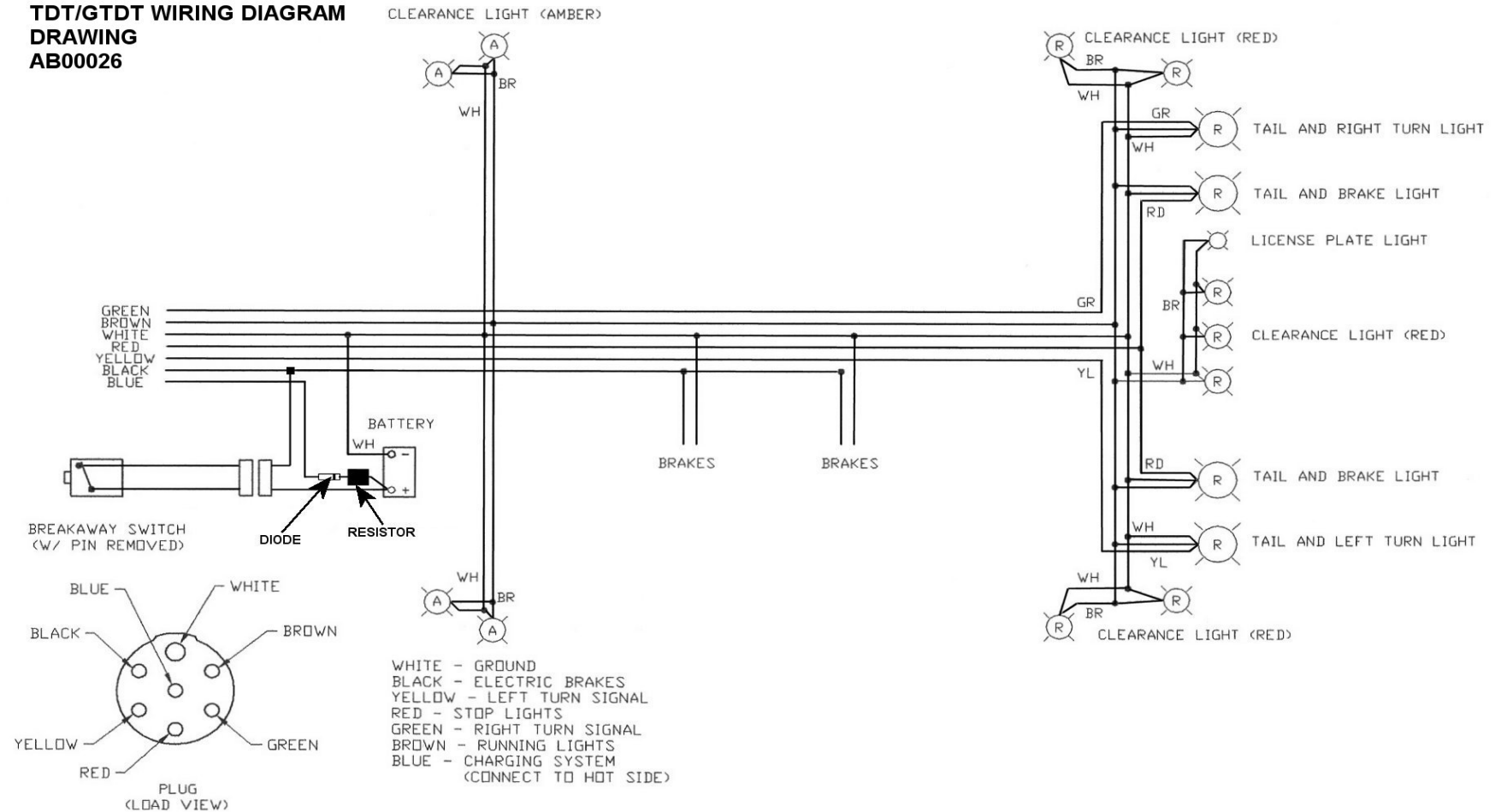
TDT/GTDT HARNESS DIAGRAM  
DRAWING  
AB00026



ITEM#	QTY PER TRAILER	DESCRIPTION	PART NUMBER
1	1	BREAK A WAY PULL PIN	4996
2	1	BREAK A WAY SWITCH ONLY	6561
3	1	BREAK A WAY SWITCH AND PIN ASSEMBLY	6561-1
4	1	NOSE HARNESS 7-WAY STANDARD	102-2
4	1	NOSE HARNESS 6-WAY OPTIONAL	102-4
5	1	BREAK A WAY BATTERY, BOX, AND HARNESS (INCLUDES ITEMS 1,2)	8003-1
6	1	BREAK A WAY LEAD OUT HARNESS	106
7	1	JUNCTION BOX LEAD OUT HARNESS	5993-1
8	1	JUNCTION BOX, INCLUDES CIRCUIT BREAKERS	4882
9	1	FRONT MARKER LIGHT HARNESS	108
10	1	ELECTRIC BRAKE LEAD OUT HARNESS	128
11	1	MAIN HARNESS, WITH JUNCTION BOX	0101-3
12	2	CENTER MARKER HARNESS	145
13	1	TANDEM BRAKE HARNESS	103
14	2	MARKER HARNESS EXTENSION	146
15	1	REAR HARNESS (INCLUDES 15,16,17)	0104-1
16	2	CORNER MARKER HARNESS	0122-2
17	1	REAR CENTER MARKER HARNESS	126-2

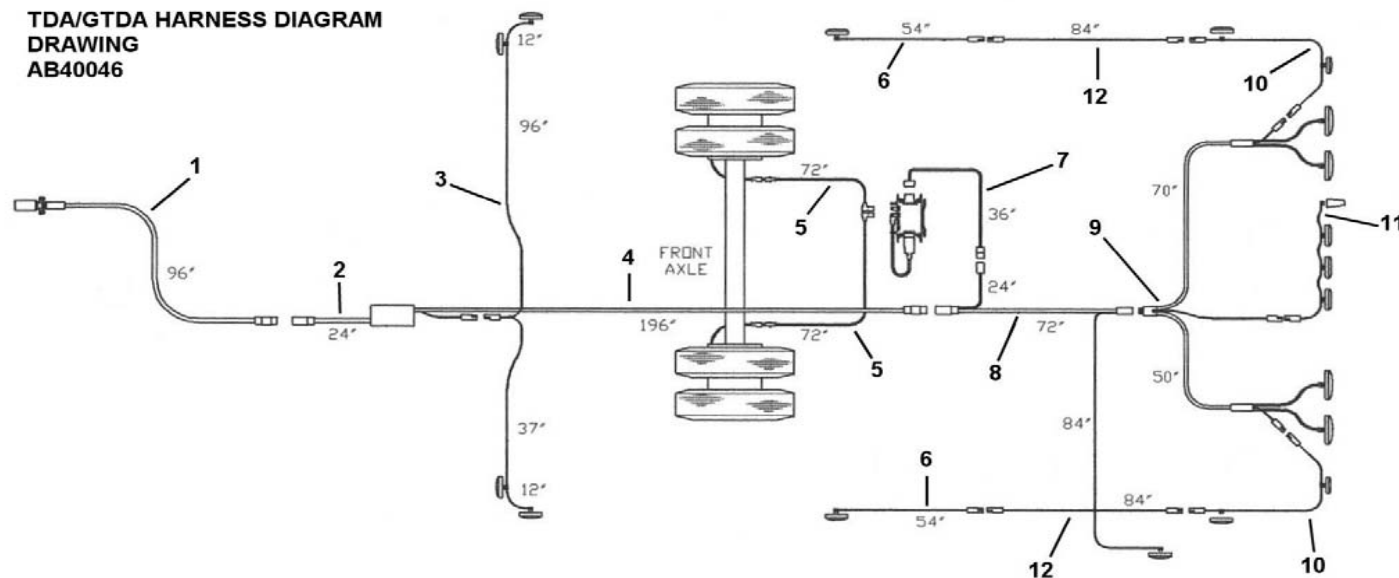
# TDT WIRING DIAGRAM

**TDT/GTDT WIRING DIAGRAM  
DRAWING  
AB00026**



# TDA/GTDA HARNESS DIAGRAM

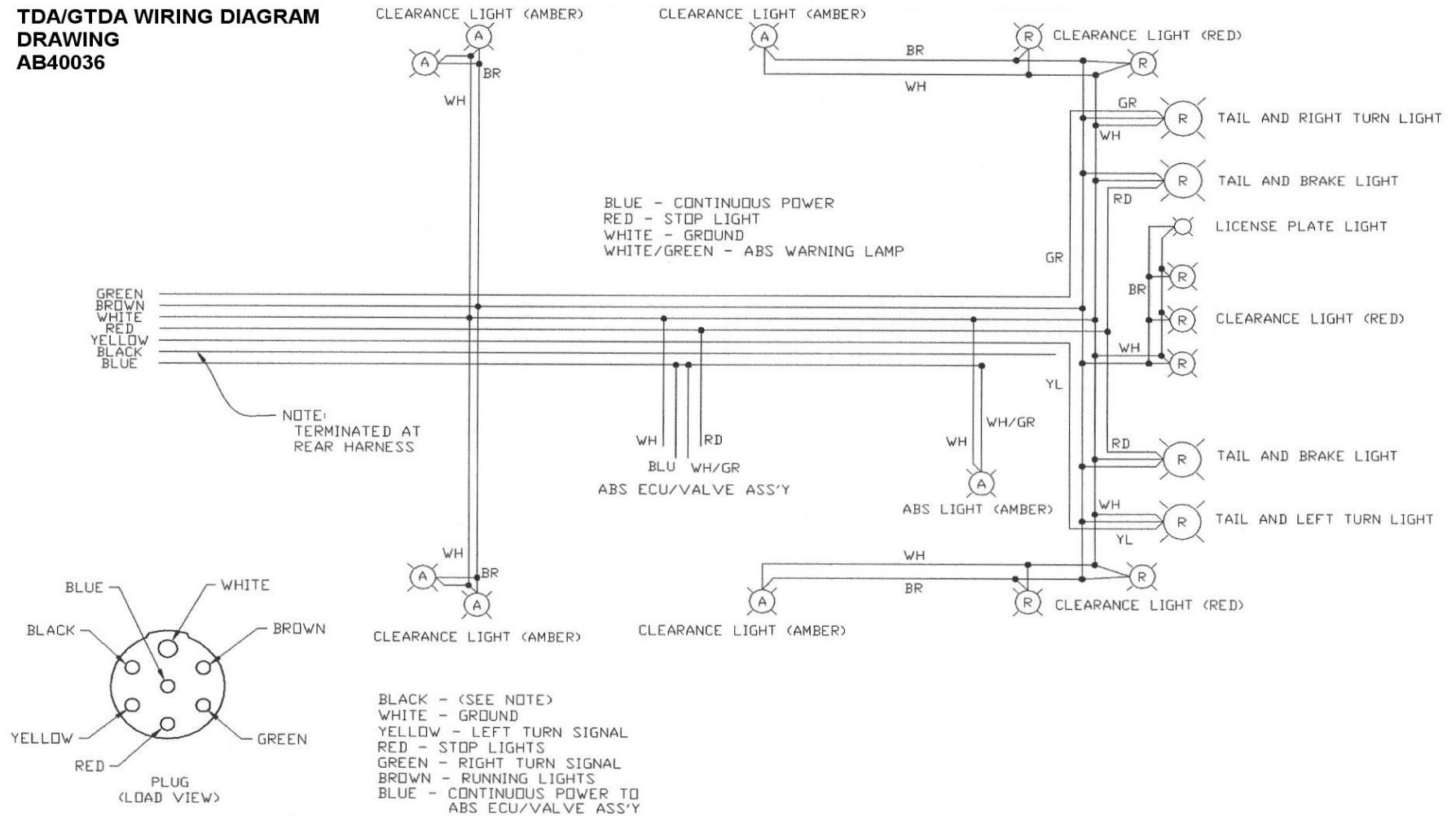
**TDA/GTDA HARNESS DIAGRAM  
DRAWING  
AB40046**



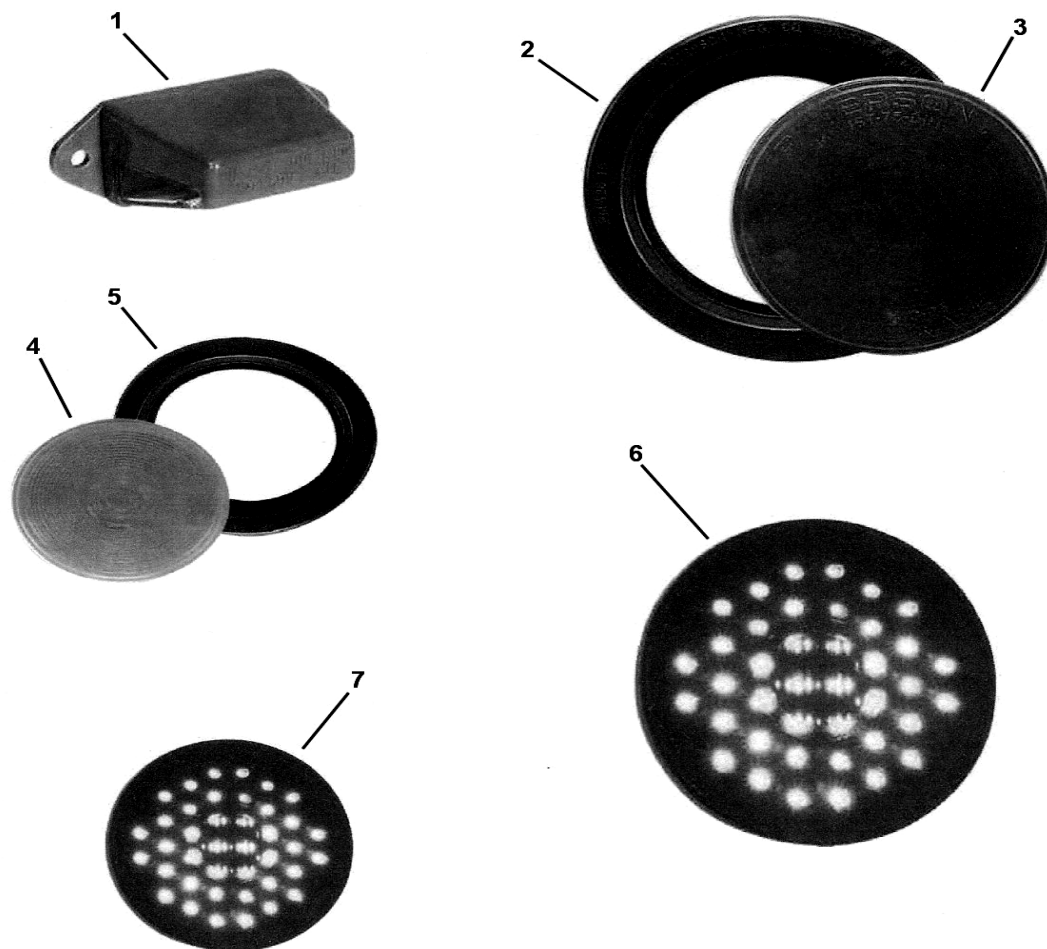
ITEM#	QTY PER TRAILER	DESCRIPTION	PART NUMBER
1	1	NOSE HARNESS 7-WAY STANDARD	102-2
1	1	NOSE HARNESS 6-WAY OPTIONAL	102-4
2	1	JUNCTION BOX LEAD OUT HARNESS	5993-1
3	1	FRONT MARKER LIGHT HARNESS	108
4	1	MAIN HARNESS, WITH JUNCTION BOX	0101-3
5	2	72" ABS SENSOR EXTENSION HARNESS	0100-2
6	2	CENTER MARKER HARNESS	145
7	1	ABS ECU POWER WIRE	0100-5
8	1	ABS MAIN HARNESS	0100-1
9	1	REAR HARNESS (INCLUDES 15,16,17)	0104-1
10	2	CORNER MARKER HARNESS	0122-2
11	1	REAR CENTER MARKER HARNESS	126-2
12	2	MARKER HARNESS EXTENSION	146

# TDA/GTDA WIRING DIAGRAM

**TDA/GTDA WIRING DIAGRAM  
DRAWING  
AB40036**



# LIGHTING



ITEM#	DESCRIPTION	PART NUMBER
1	TAG LIGHT	7074
2	4" TAIL LIGHT MOUNTING GROMMET	7067
3	4" INCANDESCENT TAIL LIGHT	7068
4	2" INCANDESCENT MARKER LIGHT, RED	5170
4	2.5" INCANDESCENT MARKER LIGHT, RED	7070
4	2.5" INCANDESCENT MARKER LIGHT, AMBER	7071
5	2.5" MARKER LIGHT MOUNTING GROMMET	7069
6	4" L.E.D. TAIL LIGHT	7068-2
7	2" L.E.D. MARKER LIGHT, RED	5170-2
7	2.5" LED MARKER LIGHT, RED	7070-2
7	2.5" LED MARKER LIGHT, AMBER	7071-2

## DECAL KIT



ITEM#	DESCRIPTION	PART NUMBER
1	DECAL KIT, ALL 20/24 TDT'S AND TDA'S MUST SPECIFY MODEL WHEN ORDERING	6095-1

INTERSTATE GRAY PAINT CODE:  
DUPONT 57704 INDUSTRIAL ENAMEL

INTERSTATE BLACK PAINT CODE:  
UNIVERSAL PAINT CODE 99 GLOSS BLACK INDUSTRIAL  
ENAMEL

MISCELLANEOUS PARTS



ITEM#	DESCRIPTION	PART NUMBER
1	TIRE, 245/75R16 -10PLY	6148-1
1	DUAL WHEEL, 16 X 6"	5151
1	WHEEL AND TIRE ASSEMBLY	6148-2
2	D-RING AND CLIP	4792
3	3/8" SAFETY HOOK WITH LATCH	6851
4	3/8" SAFETY CHAIN WITH HOOK	4732



## MAINTENANCE SCHEDULE

TIRES	- CHECK DAILY - MAINTAIN 235/85R16 AND 245/75R16 TIRES @ 80 PSI COLD.
WHEEL LUGS	- CHECK WEEKLY - LIGHTLY GREASE STUDS TORQUE TO 200 FL. LBS.
WHEEL BEARINGS	- CHECK OIL LEVEL DAILY. USE SAE 80W-90 API-GL-5 OIL
BRAKES	- SHOULD BE CHECKED FOR ADJUSTMENT MONTHLY. BRAKE LININGS SHOULD BE REPLACED WHEN LININGS ARE WORN TO RIVET HEADS (AIR) OR BACKING PLATE (ELECTRIC). DO NOT WEAR LININGS PAST RIVET HEADS OR INTO BACKING PLATE.
MAGNETS	- CHECK AT ANY INDICATION OF BRAKE PROBLEMS, AT BRAKE REPLACEMENT BEARING INSPECTION, OR ANY TIME A HUB IS PULLED. MAGNETS SHOULD BE REPLACED IF BARE WIRE IS SHOWING AT WEAR SURFACE, SURFACE OF MAGNET IS GOUGED OR SCORED, OR IF MAGNET IS WORN UNEVENLY
SUSPENSION	- THE HUTCHENS 9700 SUSPENSION DOES NOT REQUIRE LUBRICATION. THE SUSPENSION SHOULD BE INSPECTED FOR WEAR PERIODICALLY AND ANY WORN PARTS SHOULD BE REPLACED IMMEDIATELY.
TOW RING	- INSPECT FOR TIGHTNESS DAILY BEFORE USE. RING PLATE MUST BE TIGHT AGAINST NOSE PLATE TO PREVENT NOSE PLATE DEFORMATION. RING SHOULD BE INSPECTED DAILY AND REPLACED IF RING SHOWS EXCESSIVE WEAR. TO INSTALL RING ON TRAILER DETERMINE PROPER HEIGHT ACCORDING TO THE TOW VEHICLE WHICH WILL BE USED. INSTALL TOW RING WITH BOLT IN THE LOWER POSITION WHENEVER POSSIBLE. TIGHTEN NUTS ON BOLT AND STUD UNTIL BOTH LOCK WASHER ARE FULLY COMPRESSED. DO NOT USE WITH A TOW HITCH THAT IS EXCESSIVELY LOOSE OR ONE THAT BINDS WHEN TURNING.
LIGHTS	- CHECK PLUG FOR CONDITION AND TIGHTNESS OF TERMINALS. INSPECT ALL LIGHTS FOR PROPER OPERATION DAILY AND REPLACE BULBS AS NEEDED.
JACK(S)	- CHECK JACK DAILY FOR ANY PHYSICAL DAMAGE OR LACK OF OPERATION DUE TO RUST OR CORROSION. REPLACE IF SEVERELY RUSTED OR DAMAGED. CHECK MOUNTING BOLTS FOR TIGHTNESS AND BE SURE LOCKING HARDWARE IS USED.
SPECIAL NOTE ON PAINT	- IN AREAS WHERE DE-ICING CHEMICALS ARE USED BE SURE TO WASH TRAILER REGULARLY DURING WINTER MONTHS TO PREVENT DAMAGE FROM CORROSIVE DE-ICING AGENTS. INTERSTATE TRAILERS INC. WILL NOT HONOR PAINT WARRANTY CLAIMS IF DAMAGE IS DETERMINED TO BE CAUSED BY PROLONGED CONTACT WITH DE-ICING AGENTS.

## \*WARNINGS\*

*WARNING*	- BE SURE TRAILER IS CONNECTED TO TOW VEHICLE WHEN LOADING AND UNLOADING MACHINERY. LOCK TRUCK BRAKES BEFORE LOADING AND UNLOADING
*WARNING*	- CHECK TIRE INFLATION DAILY
*WARNING*	- CHECK WHEEL LUGS WEEKLY
*WARNING*	- USE CAUTION WHEN RAISING OR LOWERING REAR RAMPS. <b>DO NOT PLACE HANDS OR FEET UNDER RAMPS WHEN RAISING OR LOWERING!</b>
*WARNING*	- TRAILER SHOULD BE LEVEL WHEN FULLY LOADED. ADJUST HITCH TO MAKE TRAILER LEVEL WHEN LOADED.