

INTERSTATE

TRAILERS, INC.

PARTS & SERVICE MANUAL



DT & DTA SERIES TRAILERS

1101 HERITAGE PARKWAY • MANSFIELD, TX 76063 • 800-433-5384



A note from Interstate Trailers to our valued dealers and customers.

The scope of this manual is to provide parts and service information for year model 1998 and newer DT/DTA series trailers. We have made our best effort to document the common replacement parts for these trailers. However, Interstate Trailers Inc. builds many custom trailers which may be equipped with parts and options not listed in this manual. Also, trailers older than model year 1998 have some differences and will require help from the factory staff to locate the correct parts. If you encounter such a situation please call our factory at 1-800-433-5384 between the hours of 8 a.m. to 5 p.m. standard time, M-F excluding holidays. Interstate Trailers recommends that you always have your VIN number (trailer serial) ready when calling a dealer or the factory to assist in locating the correct parts for your trailer. Interstate Trailers will make every effort to help find the correct replacement parts for your trailer and will strive to make your ownership experience as trouble free as possible.

***In April of 2000 Dexter Axle made a design change to the electric brakes used on all trailers with electric brakes listed in this catalog. This manual covers only the new style (post 04/2000) brakes. The difference is the construction of the backing plate, pre 04/2000 the backing plate was a stamped sheet metal plate and post 04/2000 the backing plate changed to a sand cast steel plate. The brake components differ between the types so please check your trailer prior to ordering parts to insure accuracy.**

Contact Information

**Interstate Trailers Inc.
1101 Heritage parkway
Mansfield, TX 76063**

**1-800-433-5384 phone
817-453-2672 parts department fax
www.interstatetrailers.com web address**

**Thank you!
The Interstate Trailers team.**

INTERSTATE TRAILERS, INC.

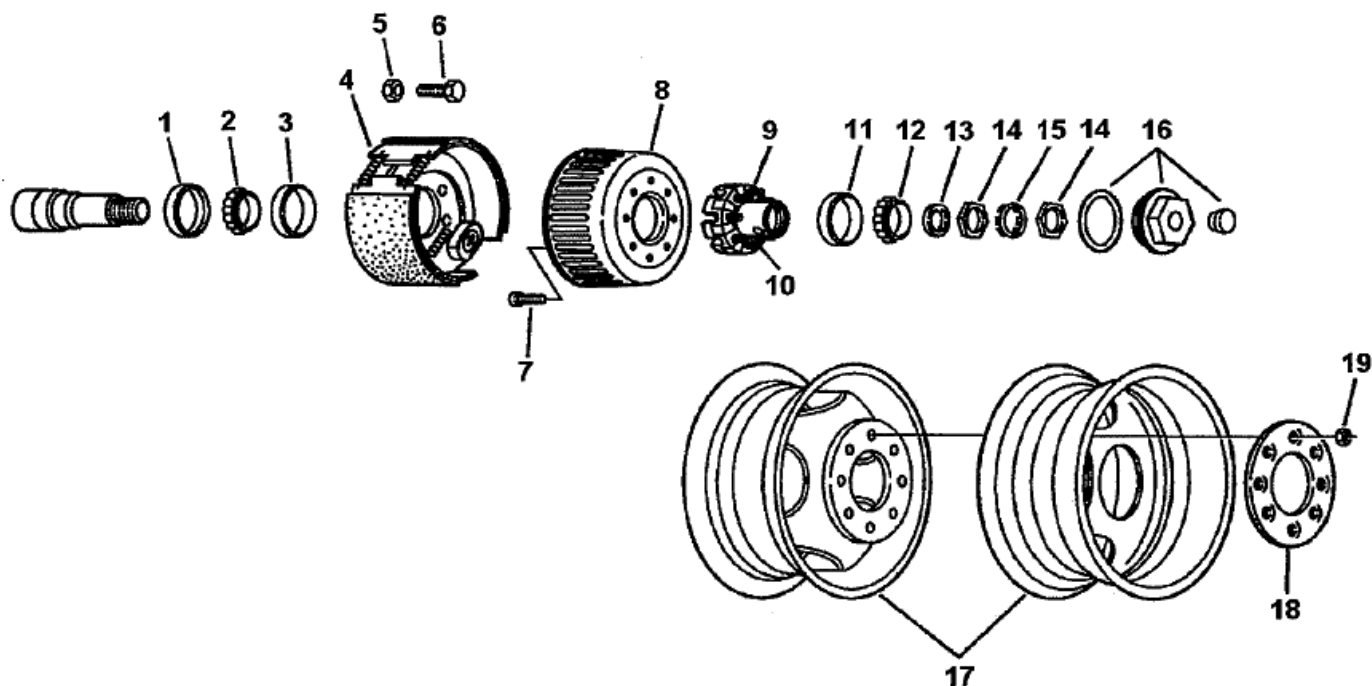
INDEX

SUBJECT	PAGE
18DT HUB, DRUM & WHEEL	1
20DT (GENERAL DUTY) HUB, DRUM & WHEEL	2
20DT (HEAVY DUTY) HUB DRUM AND WHEEL	3
24DT HUB, DRUM & WHEEL	4
18DT ELECTRIC BRAKE COMPONENTS	5
20DT (HEAVY DUTY) ELECTRIC BRAKE COMPONENTS	6
24 DT ELECTRIC BRAKE COMPONENTS	7
20DTA AIR BRAKE COMPONENTS	8
24DTA AIR BRAKE COMPONENTS	9
20/24DTA AIR SYSTEM COMPONENTS	10
DT HARNESS DIAGRAM	11
DT ELECTRICAL WIRING SCHEMATIC	12
DTA HARNESS DIAGRAM	13
DTA ELECTRICAL WIRING SCHEMATIC	14
DT/DTA SUSPENSION	15
LANDING GEAR	16
LIGHTING	17
MISCELLANEOUS PARTS	18
HITCH & RAMP COMPONENTS	19
TWO WAY SPRING ASSIST RAMPS	20
GOOSENECK HITCH & PARTS	21
DECAL KIT	22
MISCELLANEOUS PARTS	23
TOOL BOX LID, SPARE TIRE CARRIERS	24
HYDRAULIC RAMP PARTS & PLUMBING	25
ALIGNMENT INFORMATION	26
TROUBLESHOOTING– AIR BRAKES	27
TROUBLESHOOTING– ELECTRIC BRAKES	28
ABS DIAGNOSTICS	29
TRAILER OPERATIONS CHECK LIST	30
TRAILER OPERATIONS CHECK LIST	31
MAINTENACE SCHEDULE	32

INTERSTATE TRAILERS, INC.

18DT HUB & DRUM

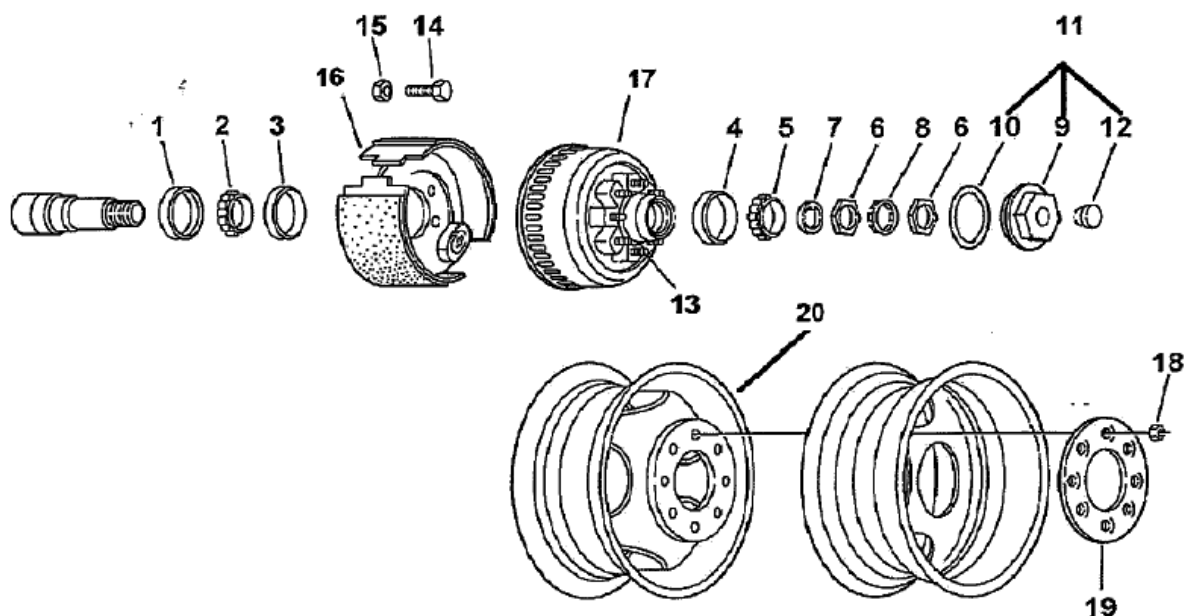
BUILT FROM 1990-07/2009



ITEM#	QTY PER TRAILER	DESCRIPTION	PART NUMBER
1	4	HUB OIL SEAL	7220
2	4	INNER BEARING CONE	7495
3	4	INNER BEARING CUP	7496
4	2	COMPLETE ELEC. BRAKE ASSEMBLY, ROAD SIDE	7210
4	2	COMPLETE ELEC. BRAKE ASSEMBLY, CURB SIDE	7212
5	28	BRAKE MOUNTING NUT	5295
6	28	BRAKE MOUNTING BOLT	5297
7	32	DRUM ATTACHING BOLT	7518-1
8	4	BRAKE DRUM	7209
9	4	HUB, WITH CUPS AND STUDS	7208
10	32	WHEEL STUD	7520
11	4	OUTER BEARING CUP	5263
12	4	OUTER BEARING CONE	5262
13	4	SPINDLE WASHER	7222
14	8	BEARING LOCKNUT	7221
15	4	SPINDLE LOCK WASHER	7223
16	4	HUB OIL CAP ASSEMBLY	7226
17	8	DUAL WHEEL, 16" X 6"	5151
18	4	WHEEL CLAMP RING	5283
19	32	WHEEL NUT	7517

INTERSTATE TRAILERS, INC.

20DT HUB & DRUM (BUILT AFTER 02/2012)
18DT HUB & DRUM (BUILT AFTER 07/2009)



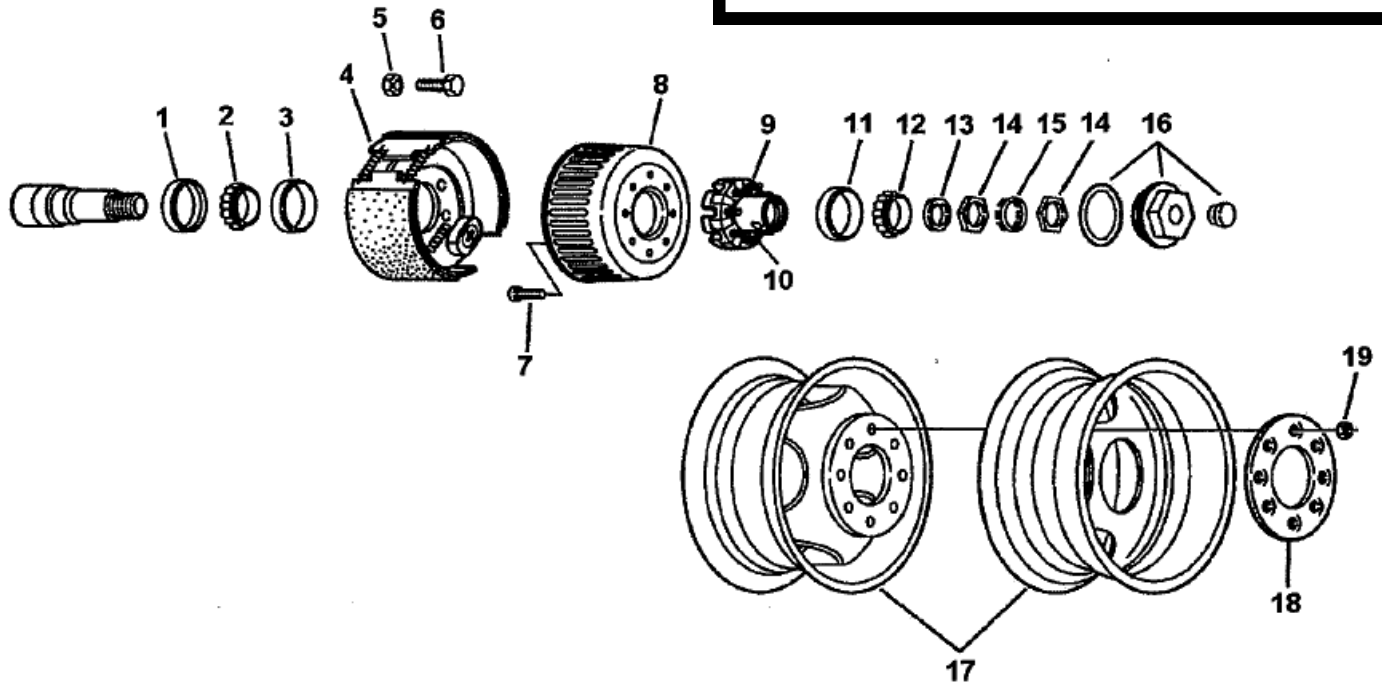
ITEM #	QTY PER TRAILER	DESCRIPTION	PART NUMBER
1	4	OIL SEAL	7220
2	4	INNER BEARING CONE	7495
3	4	INNER BEARING CUP	7496
4	4	OUTER BEARING CUP	5263
5	4	OUTER BEARING CONE	5262
6	8	SPINDLE NUT	7221
7	4	SPINDLE WASHER	7222
8	4	TANG WASHER	7223
9	4	OIL CAP	7217
10	4	"O" RING	7219
11	4	OIL CAP SET (ITEM # 9, 10, & 12)	7225
12	4	OIL CAP PLUG	7515
13	32	5/8 - 18 WHEEL STUD	7520
14	28	BRAKE MOUNTING BOLT	5297
15	28	BRAKE MOUNTING NUT	5295
16	2	L. H. ELECTRIC BRAKE ASSEMBLY	7210
	2	R. H. ELECTRIC BRAKE ASSEMBLY	7212
17	4	HUB & DRUM ASSEMBLY	7209-1
18	32	5/8 - 18 90° CONE NUT	7517
19	4	CLAMP RING	5283
20	8	WHEEL, DUAL 16 X 6	5151

INTERSTATE TRAILERS, INC.

20DT/DTA HUB & DRUM

HD 10K AXLES – STANDARD APRIL 2000-FEB 2012

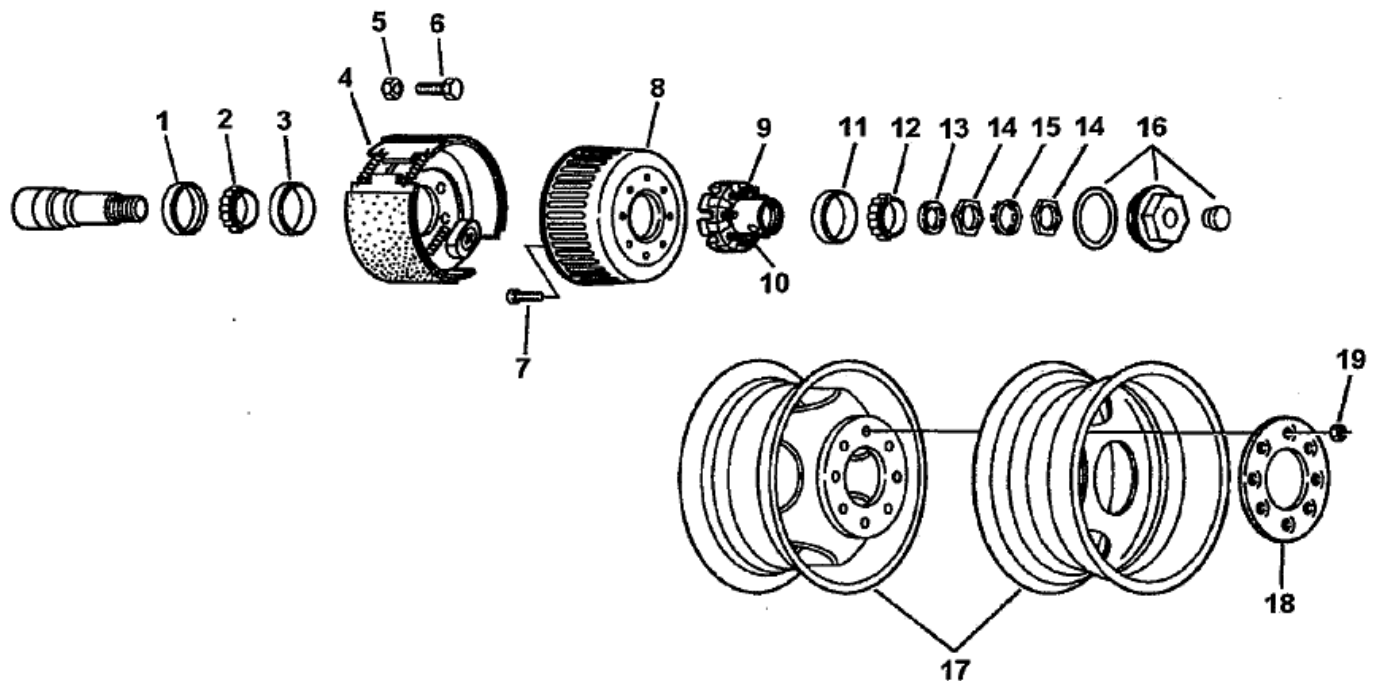
—OPTIONAL FEB 2012– PRESENT



ITEM#	QTY PER TRAILER	DESCRIPTION	PART NUMBER
1	4	HUB OIL SEAL	6010
2	4	INNER BEARING CONE	7493
3	4	INNER BEARING CUP	7494
4	2	COMPLETE ELEC. BRAKE ASSEMBLY, ROAD SIDE	7559
4	2	COMPLETE ELEC. BRAKE ASSEMBLY, CURB SIDE	7560
5	28	BRAKE MOUNTING NUT	5295
6	28	BRAKE MOUNTING BOLT	5297
7	32	DRUM ATTACHING BOLT	7518
8	2	BRAKE DRUM, WITH ABS (FRONT, DTA ONLY)	7561-1
8	2	BRAKE DRUM, NON ABS	7561
9	4	HUB, WITH CUPS AND STUDS	7562
10	32	WHEEL STUD	7520
11	4	OUTER BEARING CUP	7496
12	4	OUTER BEARING CONE	7495
13	4	SPINDLE WASHER	5294
14	8	BEARING LOCKNUT	7511
15	4	SPINDLE LOCK WASHER	7512
16	4	HUB OIL CAP ASSEMBLY	7226
17	8	DUAL WHEEL, 16" X 6"	5151
18	4	WHEEL CLAMP RING	5283
19	32	WHEEL NUT	7517
• OPTIONAL	4	HEAVY DUTY HUB OIL SEAL, 2 PIECE	6010-1

INTERSTATE TRAILERS, INC.

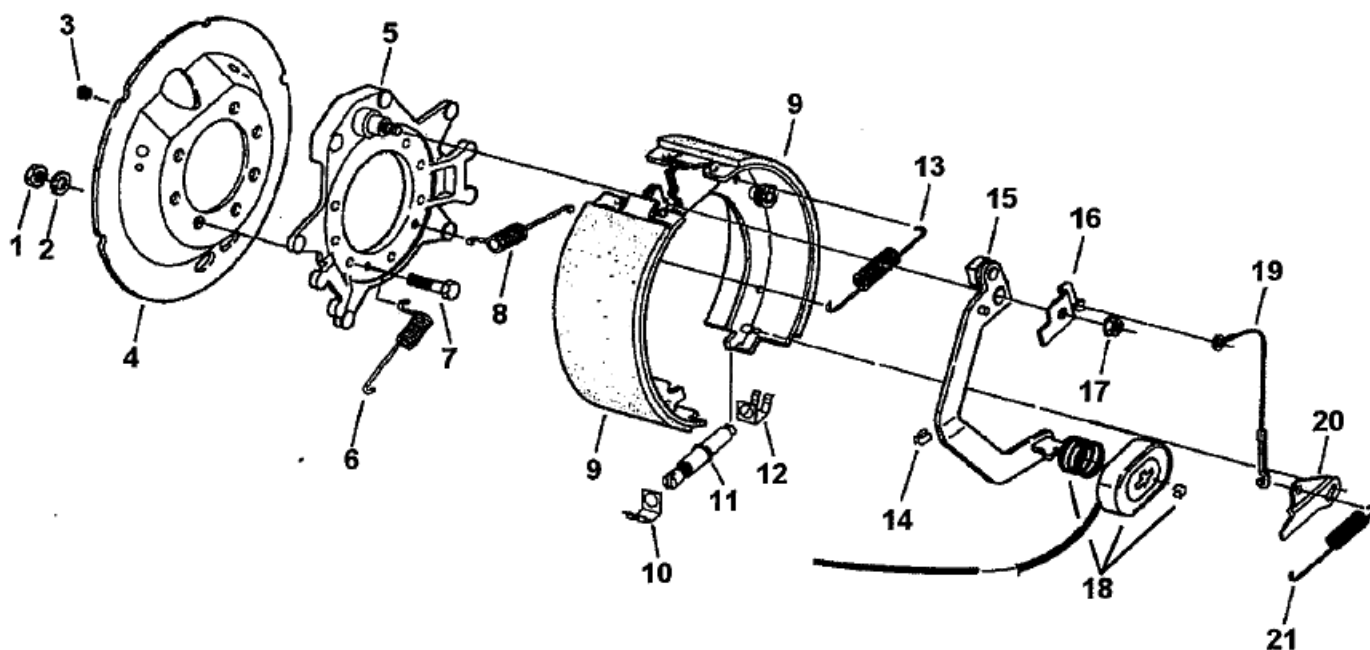
24DT/DTA HUB & DRUM



ITEM#	QTY PER TRAILER	DESCRIPTION	PART NUMBER
1	4	HUB OIL SEAL	6010
2	4	INNER BEARING CONE	7503
3	4	INNER BEARING CUP	7504
4	2	COMPLETE ELEC. BRAKE ASSEMBLY, ROAD SIDE	7505
4	2	COMPLETE ELEC. BRAKE ASSEMBLY, CURB SIDE	7506
5	28	BRAKE MOUNTING NUT	5295
6	28	BRAKE MOUNTING BOLT	5297
7	32	DRUM ATTACHING BOLT	7518
8	2	BRAKE DRUM, WITH ABS (FRONT DTA ONLY)	7507-1
8	2	BRAKE DRUM, NON ABS	7507
9	4	HUB, WITH CUPS AND STUDS	7508
10	32	WHEEL STUD	7520
11	4	OUTER BEARING CUP	7509
12	4	OUTER BEARING CONE	7510
13	4	SPINDLE WASHER	5294
14	8	BEARING LOCKNUT	7511
15	4	SPINDLE LOCK WASHER	7512
16	4	HUB OIL CAP ASSEMBLY	7226
17	8	DUAL WHEEL, 16" X 6"	5151
18	4	WHEEL CLAMP RING	5283
19	32	WHEEL NUT	7517
• OPTIONAL	4	HEAVY DUTY HUB OIL SEAL, 2 PIECE	6010-1

INTERSTATE TRAILERS, INC.

18DT ELECTRIC BRAKE

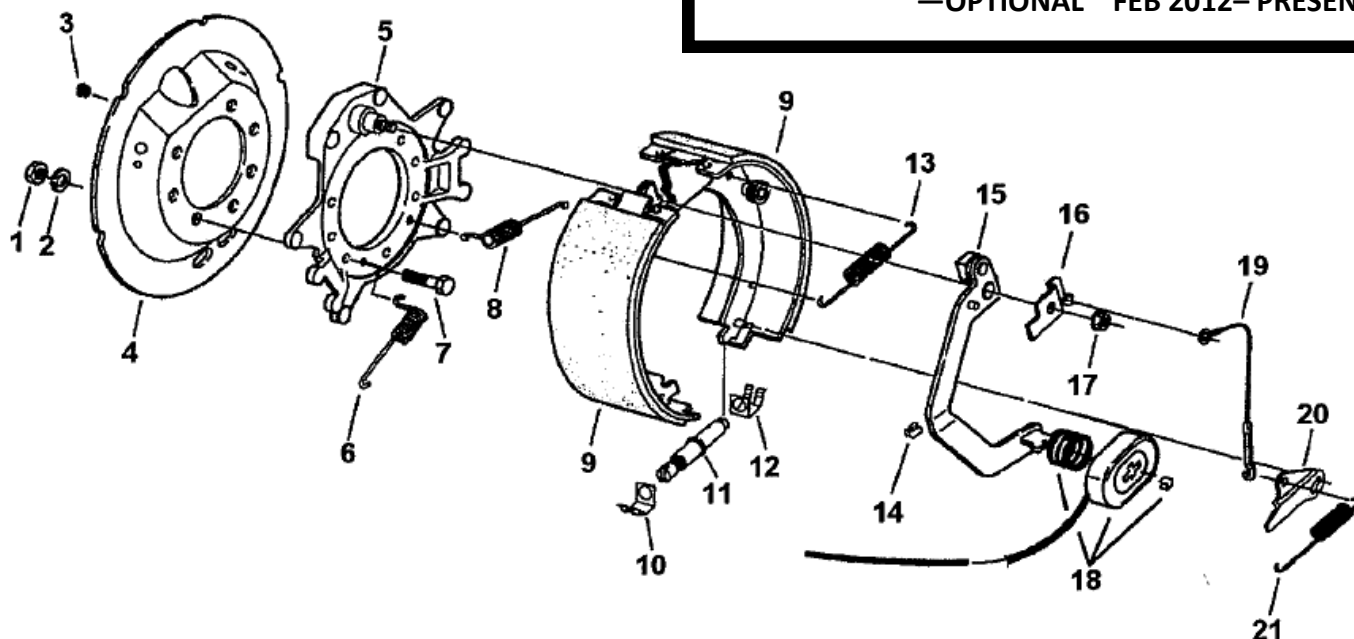


ITEM#	QTY PER TRAILER	DESCRIPTION	PART NUMBER
1	28	BRAKE MOUNTING NUT	5295
2	28	BRAKE MOUNTING LOCK WASHER	5301
3	4	WIRE GROMMET	4843
4	4	DUST SHIELD	7211
5	4	CAST BACKING PLATE	7750-1
6	4	CENTERING SPRING	7555
7	28	BRAKE MOUNTING BOLT	5297
8	4	CENTERING SPRING	7555
9	2	BRAKE SHOE KIT, ROADSIDE	7528-1
9	2	BRAKE SHOE KIT, CURBSIDE	7529-1
10	4	ADJUSTER CLIP, THREAD END	4613
11	2	BRAKE ADJUSTER, ROADSIDE	7534
11	2	BRAKE ADJUSTER, CURBSIDE	7535
12	4	ADJUSTER CLIP, BARREL END	4613-1
13	4	BRAKE SHOE RETURN SPRING	5335
14	12	WIRE CLIP	4846-1
15	2	ACTUATOR ARM, ROADSIDE	7553
15	2	ACTUATOR ARM, CURBSIDE	7554
16	2	ARM/SHOE RETAINER, ROADSIDE	7557
16	2	ARM/SHOE RETAINER, CURBSIDE	7558
17	4	FLANGE NUT	7543
18	4	MAGNET, KIT	7555-1
19	4	ADJUSTER CABLE	7547-1
20	2	ADJUSTER LEVER, ROADSIDE	7546-1
20	2	ADJUSTER LEVER, CURBSIDE	7548-1
21	4	ADJUSTER LEVER SPRING	7536-1

INTERSTATE TRAILERS, INC.

20DT ELECTRIC BRAKE

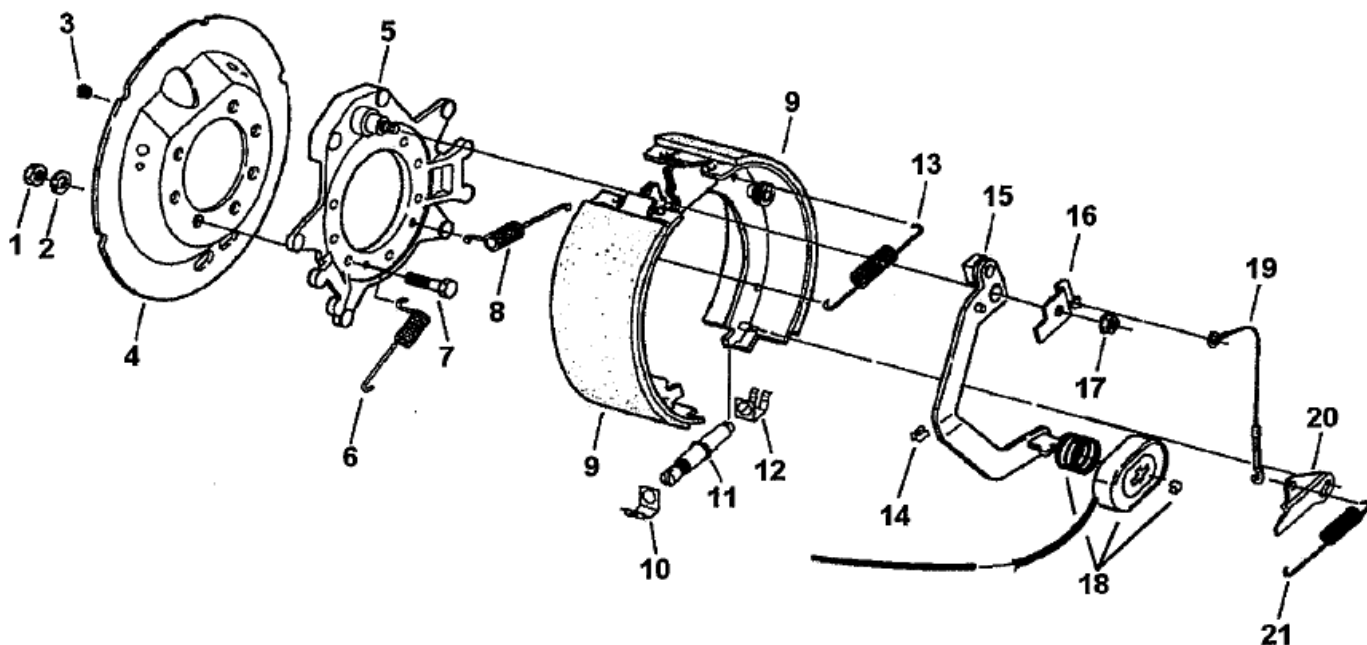
HD 10K AXLES – STANDARD APRIL 2000-FEB 2012
—OPTIONAL FEB 2012– PRESENT



ITEM#	QTY PER TRAILER	DESCRIPTION	PART NUMBER
1	28	BRAKE MOUNTING NUT	5295
2	28	BRAKE MOUNTING LOCK WASHER	5301
3	4	WIRE GROMMET	4843
4	4	DUST SHIELD	6207-1
5	4	CAST BACKING PLATE	7750-1
6	4	CENTERING SPRING	7555
7	28	BRAKE MOUNTING BOLT	5297
8	4	CENTERING SPRING	7555
9	2	BRAKE SHOE KIT, ROADSIDE	7551-1
9	2	BRAKE SHOE KIT, CURBSIDE	7552-1
10	4	ADJUSTER CLIP, THREAD END	4613
11	2	BRAKE ADJUSTER, ROADSIDE	7534
11	2	BRAKE ADJUSTER, CURBSIDE	7535
12	4	ADJUSTER CLIP, BARREL END	4613-1
13	4	BRAKE SHOE RETURN SPRING	5335
14	12	WIRE CLIP	4846-1
15	2	ACTUATOR ARM, ROADSIDE	7553
15	2	ACTUATOR ARM, CURBSIDE	7554
16	2	ARM/SHOE RETAINER, ROADSIDE	7557
16	2	ARM/SHOE RETAINER, CURBSIDE	7558
17	4	FLANGE NUT	7543
18	4	MAGNET, KIT	7555-1
19	4	ADJUSTER CABLE	7547-1
20	2	ADJUSTER LEVER, ROADSIDE	7546-1
20	2	ADJUSTER LEVER, CURBSIDE	7548-1
21	4	ADJUSTER LEVER SPRING	7536-1

INTERSTATE TRAILERS, INC.

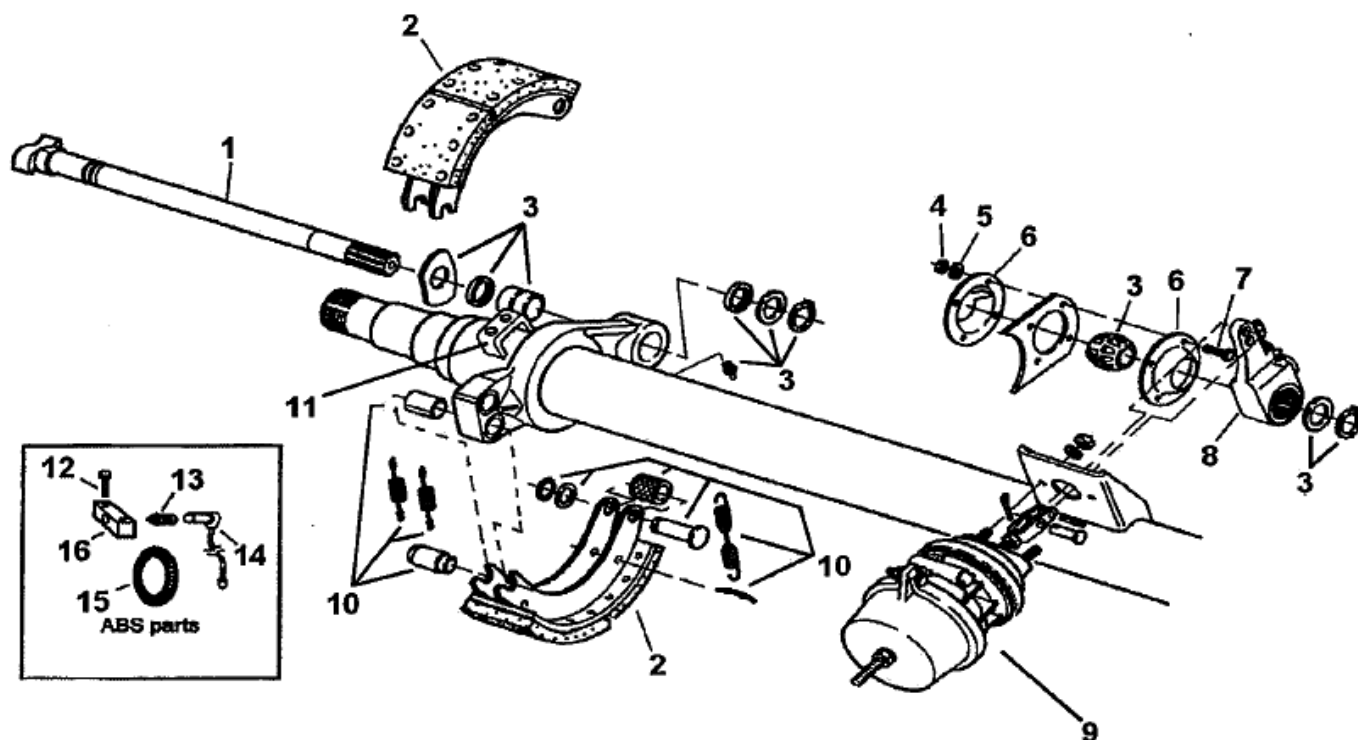
24DT ELECTRIC BRAKE



ITEM#	QTY PER TRAILER	DESCRIPTION	PART NUMBER
1	28	BRAKE MOUNTING NUT	5295
2	28	BRAKE MOUNTING LOCK WASHER	5301
3	4	WIRE GROMMET	4843
4	4	DUST SHIELD	6207-2
5	4	CAST BACKING PLATE	7750-1
6	4	CENTERING SPRING	7555
7	28	BRAKE MOUNTING BOLT	5297
8	4	CENTERING SPRING	7555
9	2	BRAKE SHOE KIT, ROADSIDE	7570-1
9	2	BRAKE SHOE KIT, CURBSIDE	7571-1
10	4	ADJUSTER CLIP, THREAD END	4613
11	2	BRAKE ADJUSTER, ROADSIDE	7534
11	2	BRAKE ADJUSTER, CURBSIDE	7535
12	4	ADJUSTER CLIP, BARREL END	4613-1
13	4	BRAKE SHOE RETURN SPRING	5335
14	12	WIRE CLIP	4846-1
15	2	ACTUATOR ARM, ROADSIDE	7537-1
15	2	ACTUATOR ARM, CURBSIDE	7538-1
16	2	ARM/SHOE RETAINER, ROADSIDE	7557
16	2	ARM/SHOE RETAINER, CURBSIDE	7558
17	4	FLANGE NUT	7543
18	4	MAGNET, KIT	7539-1
19	4	ADJUSTER CABLE	7547-1
20	2	ADJUSTER LEVER, ROADSIDE	7546-1
20	2	ADJUSTER LEVER, CURBSIDE	7548-1
21	4	ADJUSTER LEVER SPRING	7536-1

INTERSTATE TRAILERS, INC.

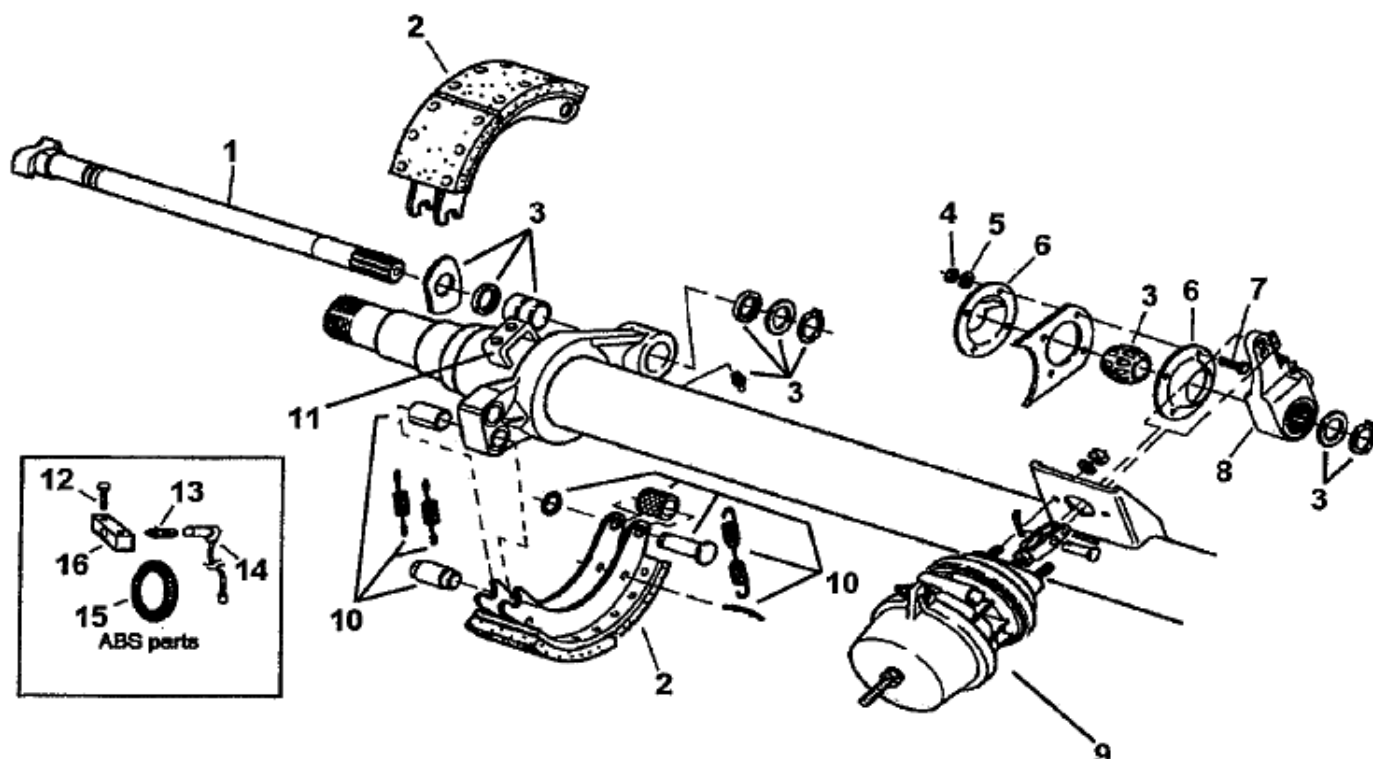
20DTA AIR BRAKES



ITEM#	QTY PER TRAILER	DESCRIPTION	PART NUMBER
1	2	CAMSHAFT, ROADSIDE -28 SPLINE	5230
1	2	CAMSHAFT, CURBSIDE -28 SPLINE	5231
2	8	BRAKE SHOE, 12.25 X 4" "P" PRE 1995	6224
2	8	BRAKE SHOE, 12.25 X 4" "PQ"	6237
3	4	BRAKE CAMSHAFT REBUILD/SERVICE KIT	6215
4	16	CAMSHAFT RETAINER PLATE NUT	6290
5	16	CAMSHAFT RETAINER PLATE LOCKWASHER	6289
6	8	CAMSHAFT RETAINER PLATE	6288
7	16	CAMSHAFT RETAINER PLATE BOLT	6287
8	4	SLACK ADJUSTER, 28 SPLINE AUTOMATIC	5207
9	4	SPRING BRAKE CHAMBER 20/24	5209
10	4	BRAKE SHOE HARDWARE KIT PRE 1995	6220
10	4	BRAKE SHOE HARDWARE KIT	6235
11	2	LOWER ABS MOUNTING BLOCK	7000
12	4	ABS SENSOR MOUNTING BLOCK BOLT	7004
13	2	ABS SENSOR RETAINER CLIP	7002
14	2	ABS SENSOR, 90 DEGREE WIRE	7003
15	2	ABS TONE RING	7006
16	2	UPPER ABS SENSOR MOUNTING BLOCK	7001
*	4	AIR CHAMBER MOUNTING BRACKET	5206

INTERSTATE TRAILERS, INC.

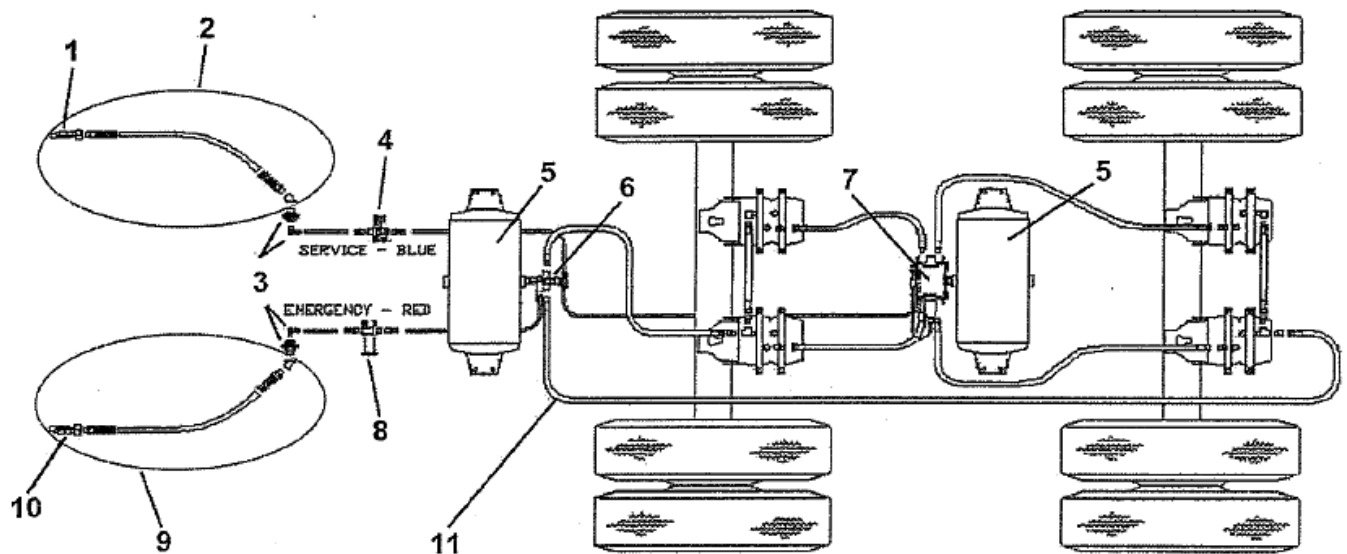
24DTA AIR BRAKES



ITEM#	QTY PER TRAILER	DESCRIPTION	PART NUMBER
1	2	CAMSHAFT, ROADSIDE -28 SPLINE	5210
1	2	CAMSHAFT, CURBSIDE -28 SPLINE	5210-1
2	8	BRAKE SHOE, 12.25 X 5" "P" PRE 1995	6226
2	8	BRAKE SHOE, 12.25 X 5" "PQ"	6236
3	4	BRAKE CAMSHAFT REBUILD/SERVICE KIT	6215
4	16	CAMSHAFT RETAINER PLATE NUT	6290
5	16	CAMSHAFT RETAINER PLATE LOCKWASHER	6289
6	8	CAMSHAFT RETAINER PLATE	6288
7	16	CAMSHAFT RETAINER PLATE BOLT	6287
8	4	SLACK ADJUSTER, 28 SPLINE AUTOMATIC	5207
9	4	SPRING BRAKE CHAMBER 24/30	6293
10	4	BRAKE SHOE HARDWARE KIT PRE 1995	6220
10	4	BRAKE SHOE HARDWARE KIT	6235
11	2	LOWER ABS MOUNTING BLOCK	7000
12	4	ABS SENSOR MOUNTING BLOCK BOLT	7004
13	2	ABS SENSOR RETAINER CLIP	7002
14	2	ABS SENSOR, 90 DEGREE WIRE	7003
15	2	ABS TONE RING	7006
16	2	UPPER ABS SENSOR MOUNTING BLOCK	7001
*	4	AIR CHAMBER MOUNTING BRACKET	5206

INTERSTATE TRAILERS, INC.

20/24DTA AIR SYSTEM

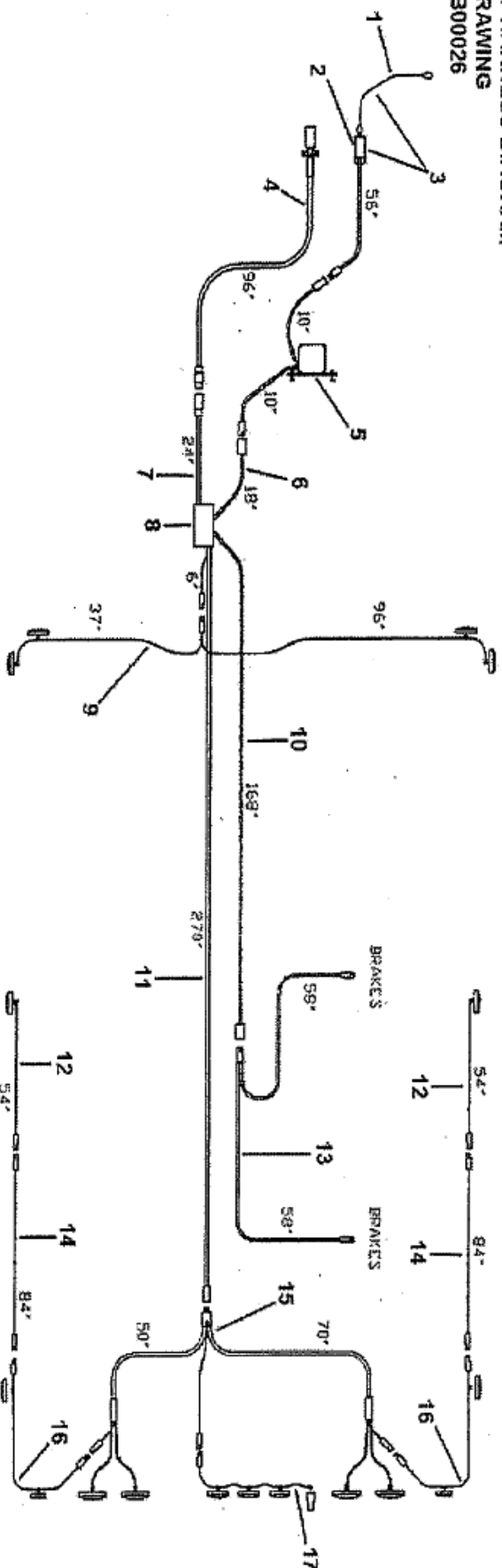


ITEM#	QTY PER TRAILER	DESCRIPTION	PART NUMBER
1	1	SERVICE GLADHAND	5361
2	1	SERVICE AIR HOSE ASM. W/GLADHAND & FITTINGS	5686
3	2	BULKHEAD FITTING AND ELBOW FITTING	5359
4	1	SERVICE AIR FILTER	5331-1
5	2	AIR TANK	5354
6	1	SPRING BRAKE CONTROL VALVE	5353-1
7	1	ABS VALVE/MODULE ASSEMBLY	5353-2
8	1	EMERGENCY AIR FILTER	5331
9	1	EMERGENCY AIR HOSE ASM. W/GLADHAND & FITTINGS	5687
10	1	EMERGENCY GLADHAND	5360
11		AIR HOSE, VARIOUS SIZES -CALL FACTORY	

INTERSTATE TRAILERS, INC.

DT HARNESS DIAGRAM

DT HARNESS DIAGRAM
DRAWING
AB00026



ITEM# QTY PER TRAILER

DESCRIPTION

PART NUMBER

1	1	BREAK A WAY PULL PIN	4996
2	1	BREAK A WAY SWITCH ONLY	6561
3	1	BREAK A WAY SWITCH AND PIN ASSEMBLY	6561-1
4	1	NOSE HARNESS 7-WAY STANDARD	102-2
4	1	NOSE HARNESS 6-WAY OPTIONAL	102-4
5	1	BREAK A WAY BATTERY, BOX, AND HARNESS (INCLUDES ITEMS 1,2)	8003-1
6	1	BREAK A WAY LEAD OUT HARNESS	106
7	1	JUNCTION BOX LEAD OUT HARNESS	5993-1
8	1	JUNCTION BOX, INCLUDES CIRCUIT BREAKERS	4882
9	1	FRONT MARKER LIGHT HARNESS	108
10	1	ELECTRIC BRAKE LEAD OUT HARNESS	128
11	1	MAIN HARNESS, WITH JUNCTION BOX	0101-3
12	2	CENTER MARKER HARNESS	145
13	1	TANDEM BRAKE HARNESS	103
14	2	MARKER HARNESS EXTENSION	146
15	1	REAR HARNESS (INCLUDES 15,16,17)	0104-1
16	2	CORNER MARKER HARNESS	0122-2
17	1	REAR CENTER MARKER HARNESS	0126-2
		*REPLACEMENT BATTERY, BREAK A WAY BOX	8004

COMPLETE HARNESS

1104

COMPLETE HARNESS W/BREAK A WAY

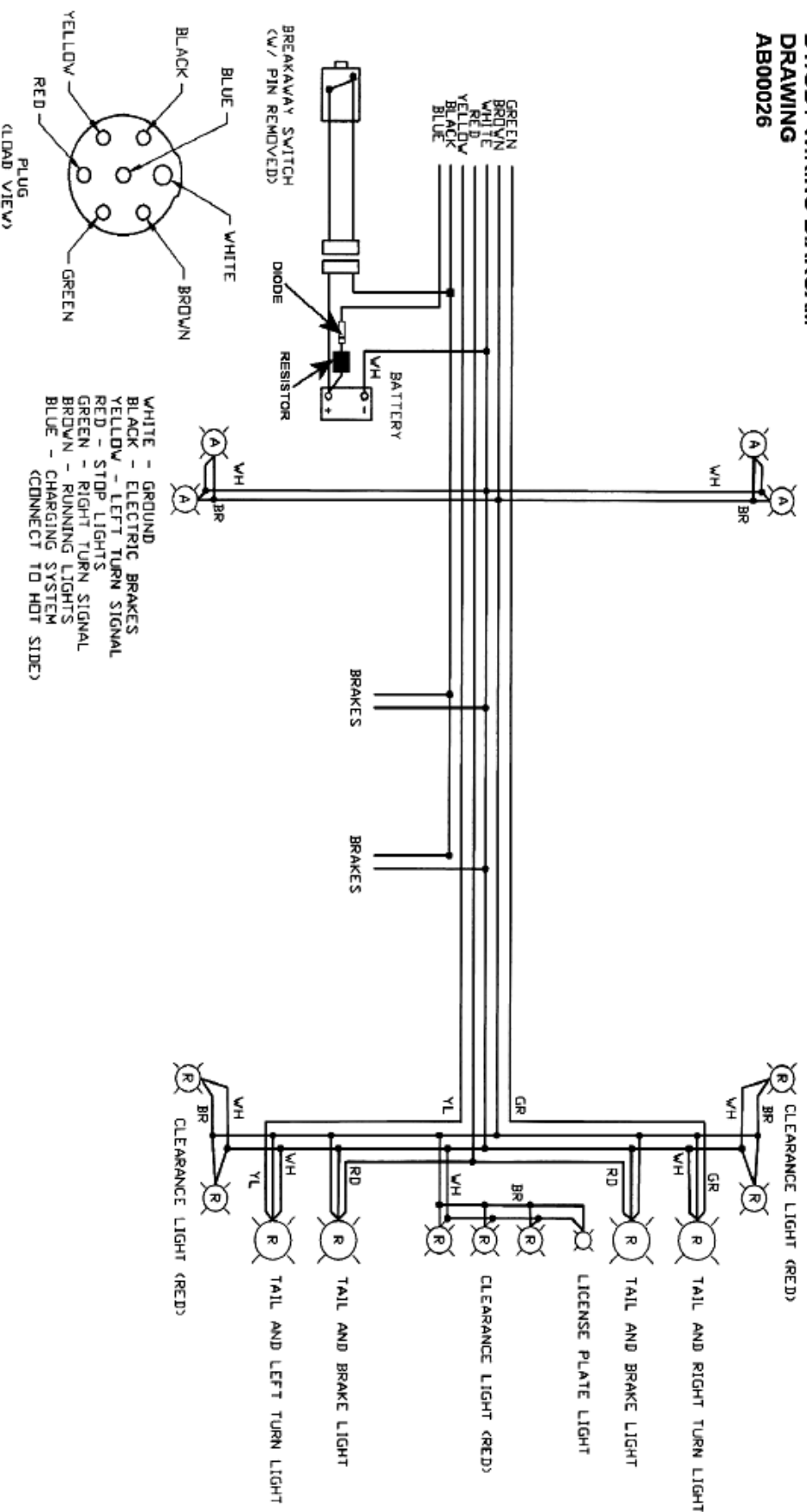
1105

INTERSTATE TRAILERS, INC.

DT/GDT WIRING DIAGRAM

DT/GDT WIRING DIAGRAM
DRAWING
AB000026

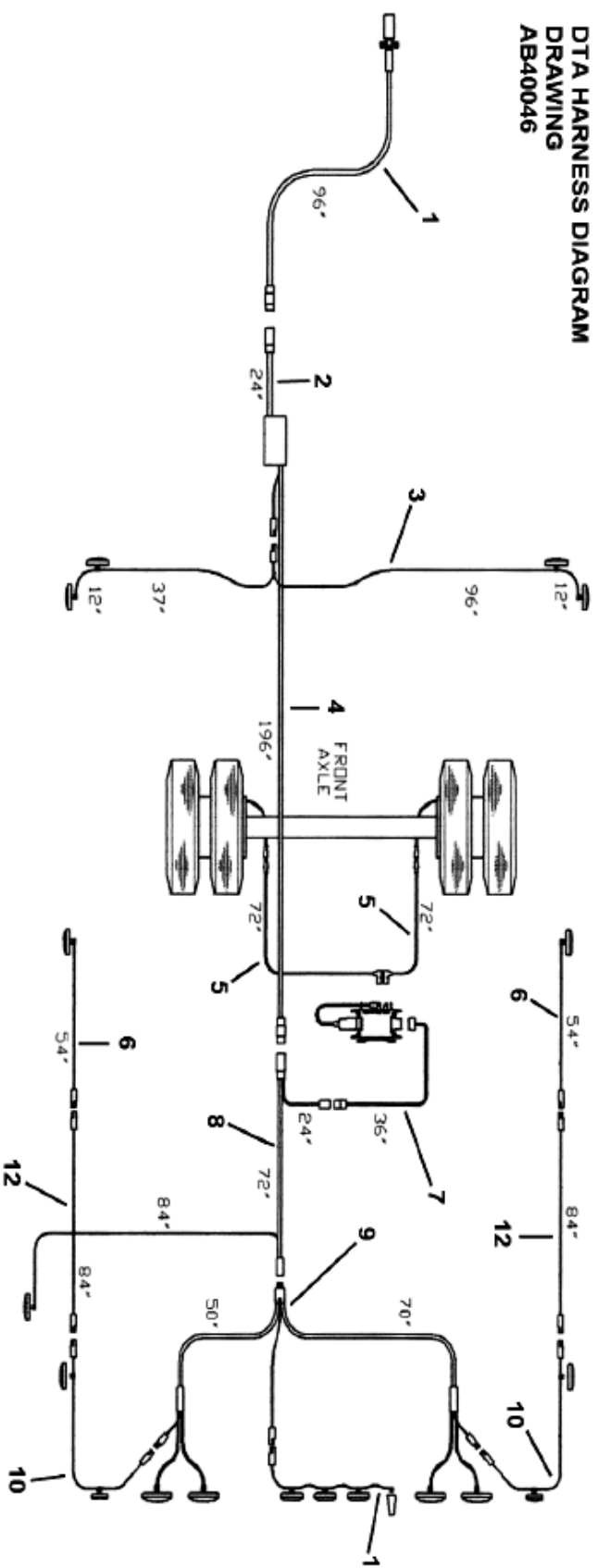
CLEARANCE LIGHT (AMBER)



INTERSTATE TRAILERS, INC.

DTA/GDTA HARNESS DIAGRAM

DTA HARNESS DIAGRAM
DRAWING
AB40046



ITEM#	QTY PER TRAILER	DESCRIPTION	PART NUMBER
1	1	NOSE HARNESS 7-WAY STANDARD	102-2
1	1	NOSE HARNESS 6-WAY OPTIONAL	102-4
2	1	JUNCTION BOX LEAD OUT HARNESS	5993-1
3	1	FRONT MARKER LIGHT HARNESS	108
4	1	MAIN HARNESS, WITH JUNCTION BOX	0101-3
5	2	72" ABS SENSOR EXTENSION HARNESS	0100-2
6	2	CENTER MARKER HARNESS	145
7	1	ABS ECU POWER WIRE	0100-5
8	1	ABS MAIN HARNESS	0100-3
9	1	REAR HARNESS (INCLUDES 15,16,17)	0104-1
10	2	CORNER MARKER HARNESS	0122-2
11	1	REAR CENTER MARKER HARNESS	0126-2
12	2	MARKER HARNESS EXTENSION	146

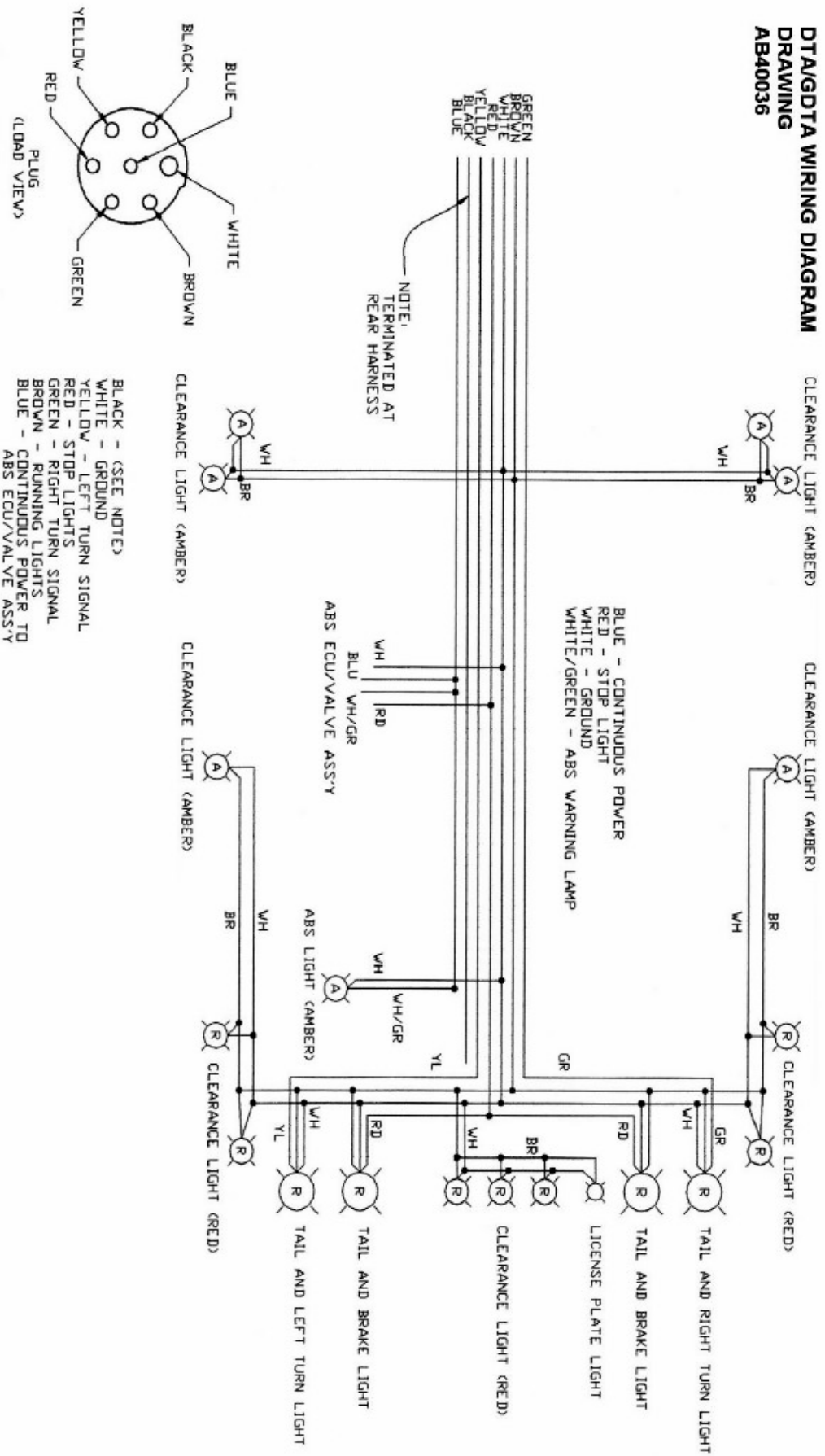
COMPLETE WIRING HARNESS

1105

INTERSTATE TRAILERS, INC.

DTA/GDTA WIRING DIAGRAM

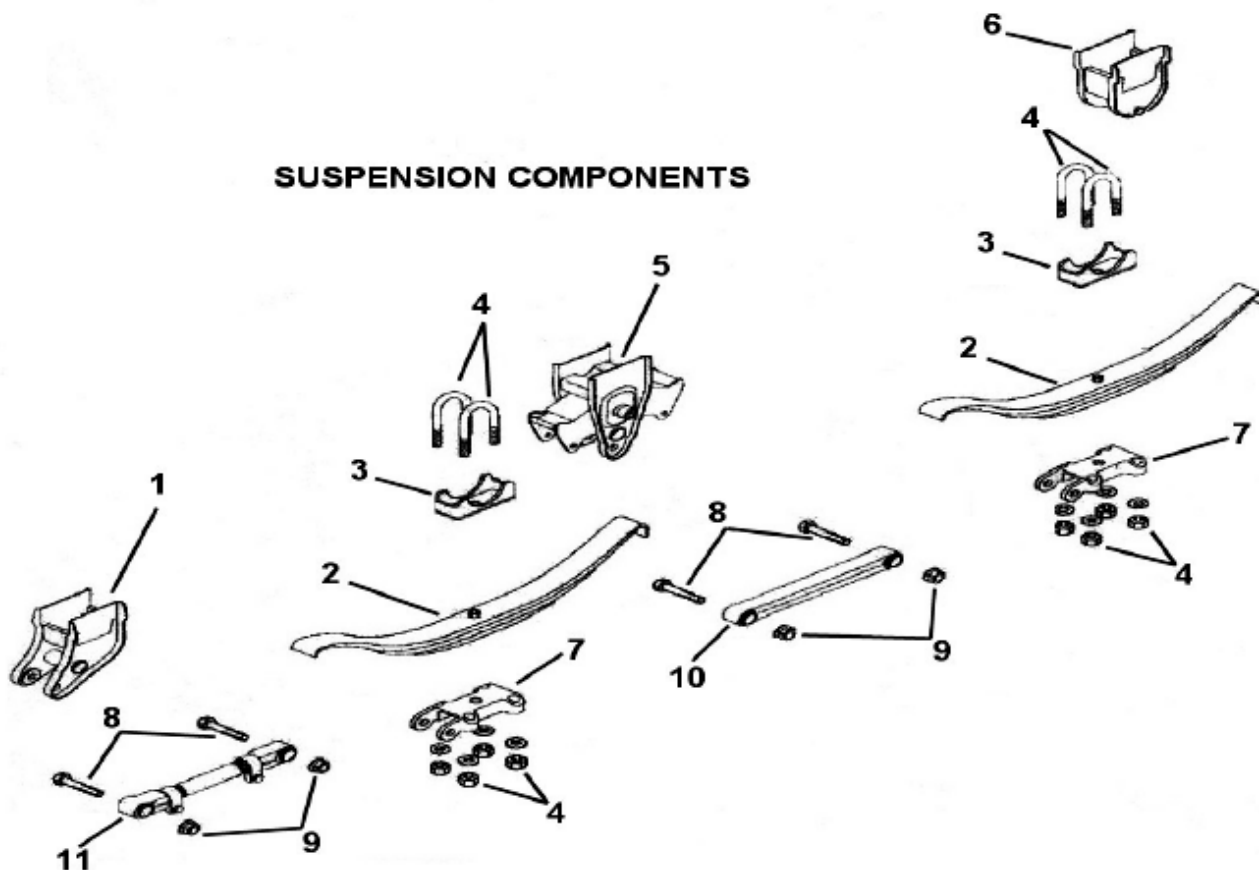
DTA/GDTA WIRING DIAGRAM
DRAWING
AB40036



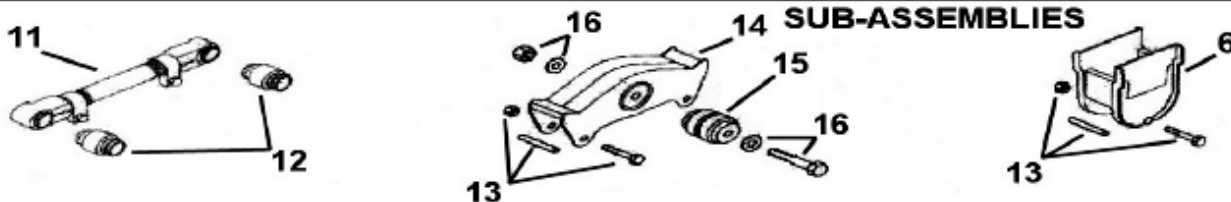
INTERSTATE TRAILERS, INC.

DT/DTA SUSPENSION

SUSPENSION COMPONENTS



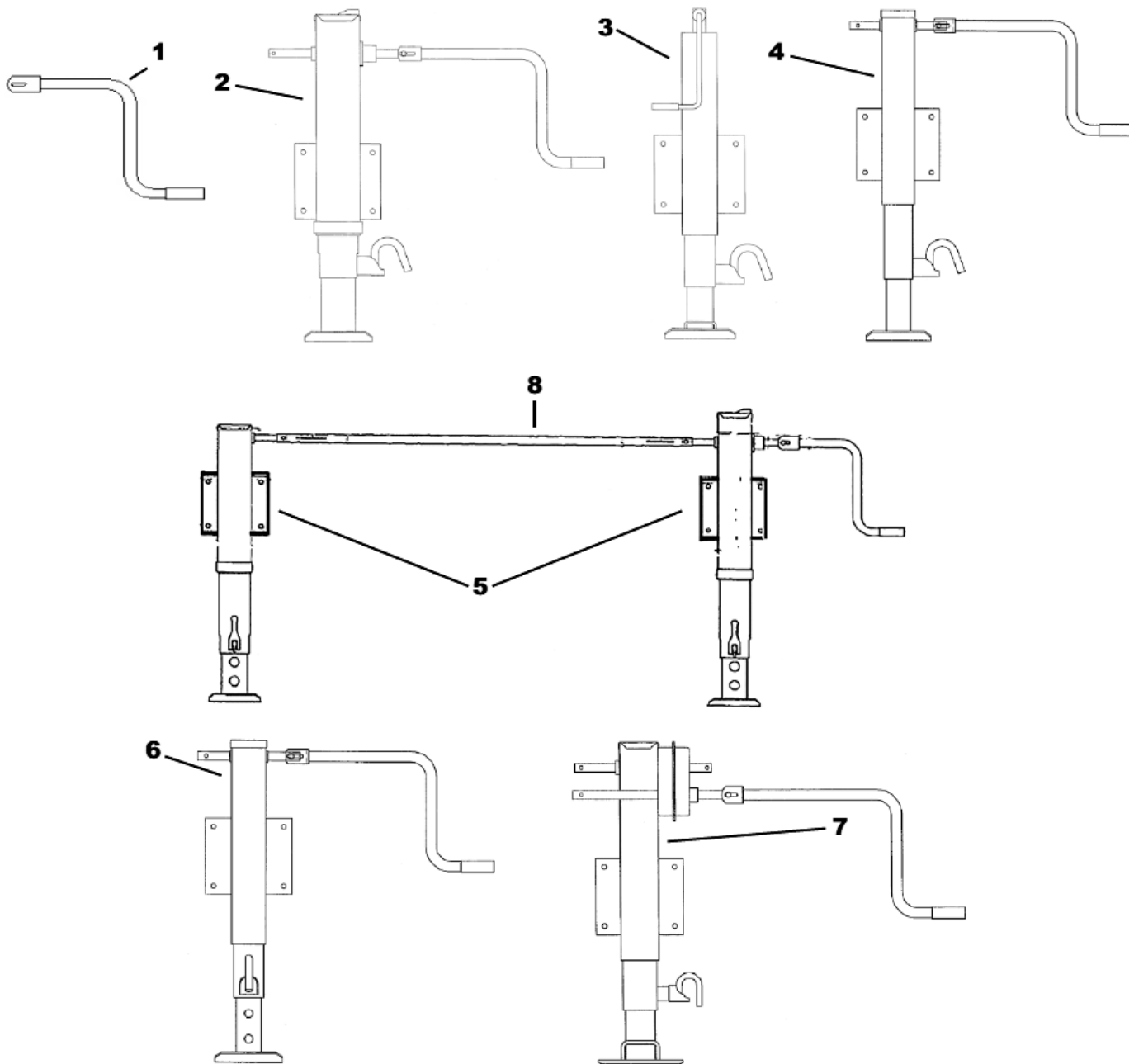
SUB-ASSEMBLIES



ITEM#	QTY PER TRAILER	DESCRIPTION	PART NUMBER
1	2	FRONT HANGER	5119
2	4	3-LEAF SPRING	5136
3	4	AXLE SEAT	5127
4	8	U-BOLT WITH NUTS AND WASHERS	5129
5	2	CENTER HANGER WITH EQUALIZER	5115
6	2	REAR HANGER	5120
7	4	BOTTOM PLATE	5128
8	8	TORQUE ARM BOLT	5133
9	8	TORQUE ARM NUT	5134
10	2	FIXED TORQUE ARM	5132
11	2	ADJUSTABLE TORQUE ARM	5131
12	8	TORQUE ARM BUSHING	5132-1
13	6	REBOUND BOLT WITH SLEEVE AND NUT	5125-3
14	2	EQUALIZER WITH BUSHING	5125
15	2	EQUALIZER BUSHING	5125-2
16	2	EQUALIZER BOLT KIT	5125-1
	2	HANGER SUPPORT TUBE	5110
	6	HANGER SPACER	5113
		COMPLETE SUSPENSION KIT	5204

INTERSTATE TRAILERS, INC.

LANDING GEAR

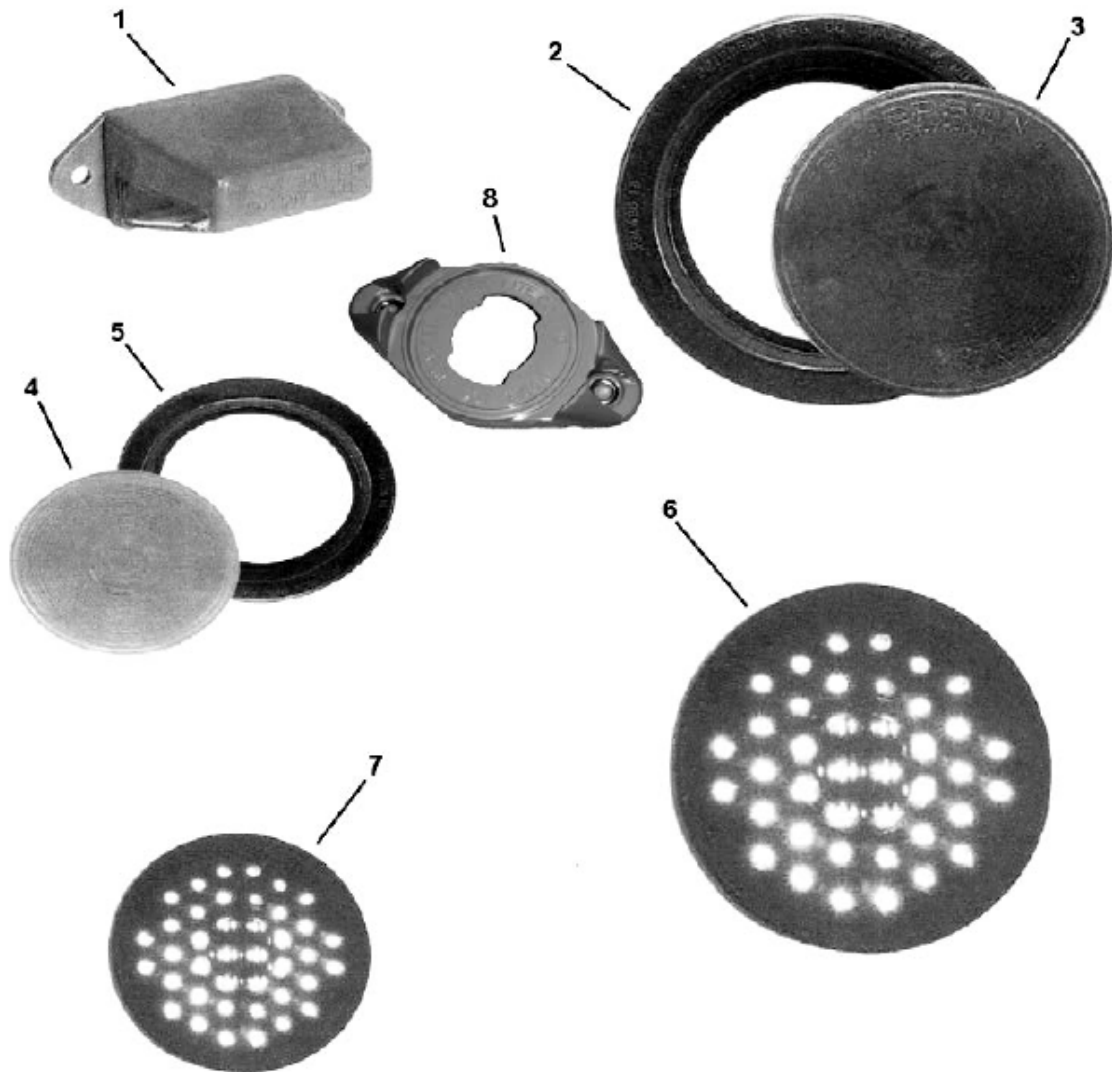


ITEM#	DESCRIPTION	PART NUMBER
1	JACK HANDLE, FITS ALL SIDEWIND JACKS	5648
2	TWO SPEED 25K JACK WITH DROP FOOT	7129
3	10K TOPWIND JACK WITH DROP FOOT	7114
4	12K SIDE WIND JACK WITH DROP FOOT	7130
5	25K TWO SPEED JACK SET INCLUDES BOTH JACKS, CROSS SHAFT, HANDLE, AND HEADBOARD MOUNTS	7125-1
6	12K JACK (FOR SINGLE SPEED DUAL JACK SET)	7125-8
7	25K JACK, 2-SPEED (HOLLAND)	7129-6
8	CROSS SHAFT, FOR DUAL JACK SET	7125-6
5	*GEARSIDE JACK ONLY*	7129-10
5	*OFFSIDE JACK ONLY *	7129-5

HYDRAULIC & ELECTRIC JACKS AVAILABLE UPON REQUEST

INTERSTATE TRAILERS, INC.

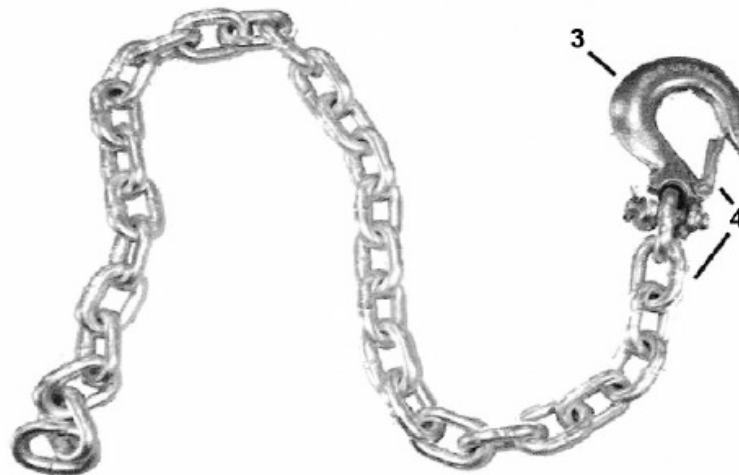
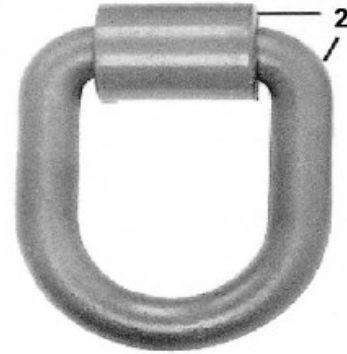
LIGHTING



ITEM#	DESCRIPTION	PART NUMBER
1	TAG LIGHT	7074
2	4" TAIL LIGHT MOUNTING GROMMET	7067
3	4" INCANDESCENT TAIL LIGHT	7068
4	2" INCANDESCENT MARKER LIGHT, RED	5170
4	2.5" INCANDESCENT MARKER LIGHT, RED	7070
4	2.5" INCANDESCENT MARKER LIGHT, AMBER	7071
5	2.5" MARKER LIGHT MOUNTING GROMMET	7069
6	4" L.E.D. TAIL LIGHT	7068-2
7	2" L.E.D. MARKER LIGHT, RED	5170-2
7	2.5" LED MARKER LIGHT, RED	7070-2
7	2.5" LED MARKER LIGHT, AMBER	7071-2
8	ABS LAMP MOUNTING BRACKET	7083
8	ABS BRACKET AND LIGHT COMBO	7083-1

INTERSTATE TRAILERS, INC.

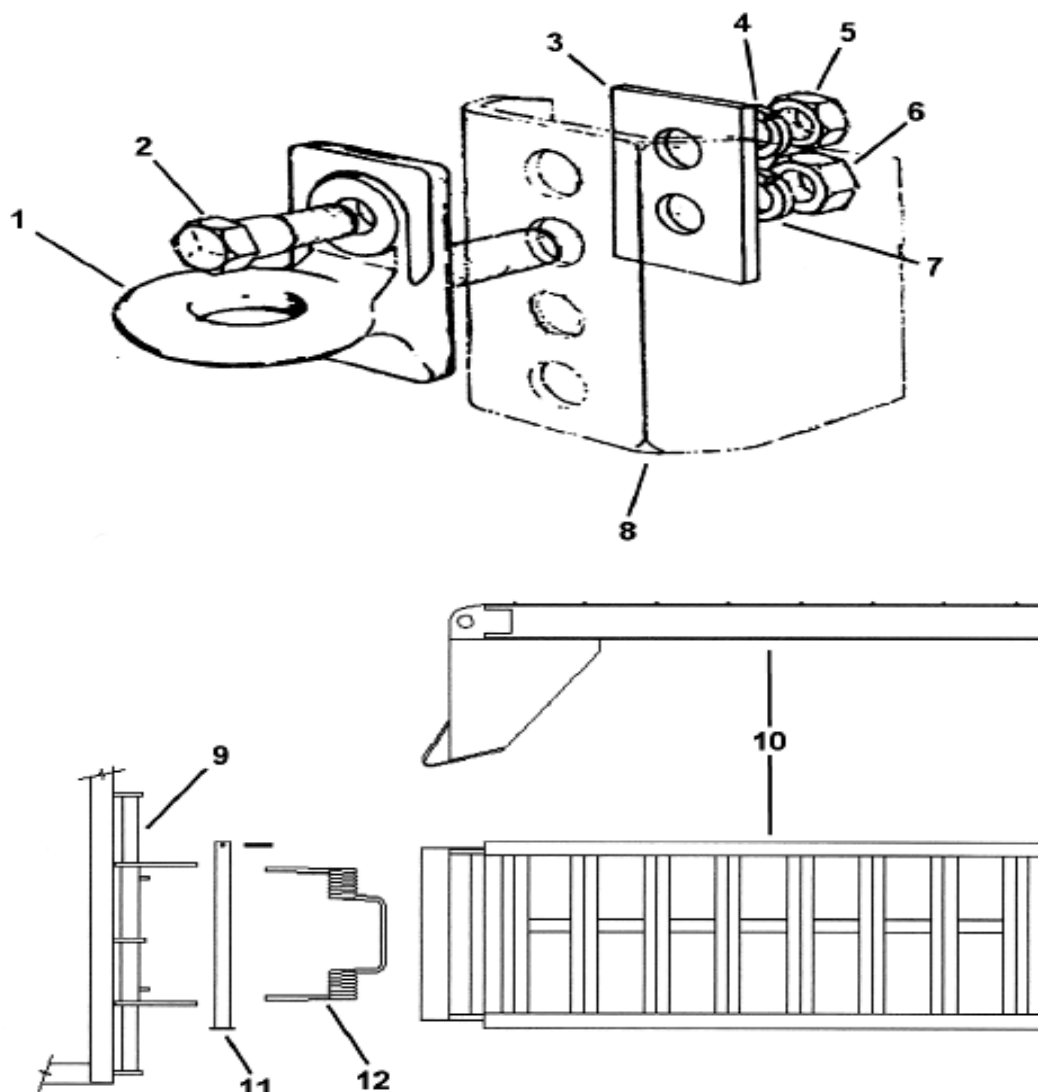
MISCELLANEOUS PARTS



ITEM#	DESCRIPTION	PART NUMBER
1	TIRE, 245/75R16 -10PLY (18-20DT/DTA)	6148-1
1	TIRE, 235/85R16 -14PLY (24DT/DTA)	6148-4
1	TIRE, 235/80R16 -10PLY STANDARD ON ALL DT/DTA'S	6148-7
1	DUAL WHEEL, 16 X 6"	5151
1	WHEEL AND TIRE ASSEMBLY 245/75R16-10PLY	6148-2
1	WHEEL AND TIRE ASSEMBLY 235/85R16-14PLY	6148-5
1	WHEEL AND TIRE ASSEMBLY 235/80R16-10PLY	6148-6
2	D-RING AND CLIP	4792
3	3/8" SAFETY HOOK WITH LATCH	6851
4	3/8" SAFETY CHAIN WITH HOOK	4732
	DUAL WHEEL, 16.5" (PRE 1998)	7034
	16" STAINLESS WHEEL SIMULATORS (SET OF 4)	7034-3

INTERSTATE TRAILERS, INC.

HITCH AND RAMPS

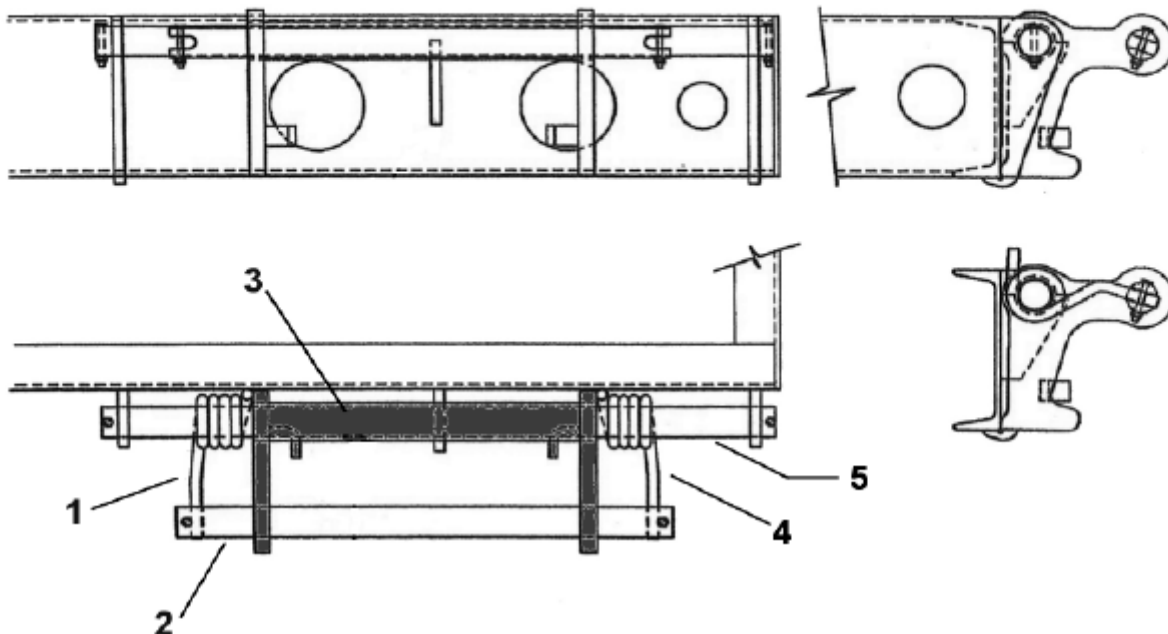


ITEM#	DESCRIPTION	PART NUMBER
1	PINTLE HITCH, NO HARDWARE	4727
1	PINTLE HITCH, WITH HARDWARE (2-7)	4790
2	HITCH BOLT	4734
3	HITCH BACKING PLATE	5254
4	1.5" LOCK WASHER	4731
5	1.5" NUT	4730
6	1.75" LOCK WASHER	4728
7	1.75" NUT	4729
8	NOSE PLATE, WITH CHAIN ANCHORS (NOT SHOWN)	6126-1
9	RAMP LINKAGE ASSEMBLY	4897
10	LOADING RAMP, WOOD DECK	7113
10	LOADING RAMP, STEEL DECK (SHOWN)	7113-1
11	RAMP PIVOT PIN	4640-1
12	RAMP LIFT ASSIST SPRING	4638

ALUMINUM RAMPS AVAILABLE

INTERSTATE TRAILERS, INC.

TWO WAY SPRING ASSIST SYSTEM



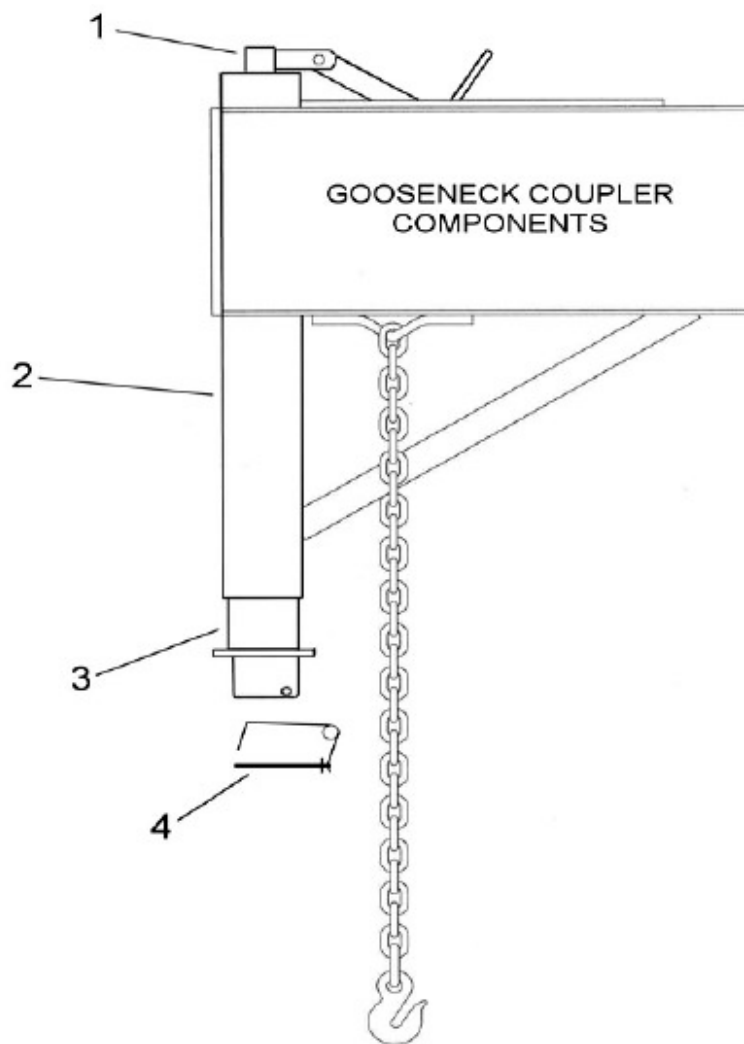
ITEM#	QTY PER RAMP	DESCRIPTION	PART NUMBER
1	1	LEFT SIDE (OF LINKAGE) SPRING	4638-1
2	1	RAMP PIN, SINGLE GROOVE	4640-9
2	1	RAMP PIN, TWO GROOVES	4640-8
3	1	LINKAGE MID SECTION (SHADED)	4897-2
4	1	RIGHT SIDE (OF LINKAGE) SPRING	4638-2
5	1	RAMP PIN, CROSS DRILLED ON EACH END*	4623

*THIS PIN MUST BE MEASURED PRIOR TO ORDERING AS SOME TRAILERS HAVE DIFFERENT WIDTH LINKAGES.

*THIS TWO WAY SPRING ASSIST BECAME AVAILABLE AS A FACTORY OPTION FOR THE 2005 MODEL YEAR, HOWEVER IT CAN BE RETRO FITTED TO OLDER TRAILERS. CALL FACTORY FOR DETAILS.

INTERSTATE TRAILERS, INC.

GOOSENECK HITCH PARTS



OLD STYLE (7124)



NEW STYLE (7124-0)



ITEM#	DESCRIPTION	PART NUMBER
1	HANDLE, 1" INPUT SHAFT	7140-1
2	HITCH, COMPLETE ASSEMBLY INCLUDES ITEMS 1,3,4	7124
3	INNER LEG, WITH MANUAL COUPLER	7127
4	BAIL PIN, FOR MANUAL COUPLER	7168
	COMPLETE HITCH ASSEMBLY (NEW STYLE)	7124-0

INTERSTATE TRAILERS, INC.

DECAL KIT












ITEM#	DESCRIPTION	PART NUMBER
1	DECAL KIT, ALL DT SERIES TRAILERS MUST SPECIFY MODEL, COLOR, AND OPTIONS WHEN ORDERING	6099-1

INTERSTATE TRAILERS' COLORS ARE CUSTOM MIXED TO OUR SPECIFICATION. THE COLOR CODES GIVEN BELOW ARE THE CLOSEST MATCHING PANTONE CODES TO OUR COLORS. THESE CODES ARE SUITABLE TO USE WHEN REPAINTING A TRAILER, BUT SHOULD NOT BE USED FOR MIXING TOUCHUP PAINT. SPECIFY A FULL GLOSS FORMULATION FROM YOUR PAINT VENDOR WHEN PURCHASING.

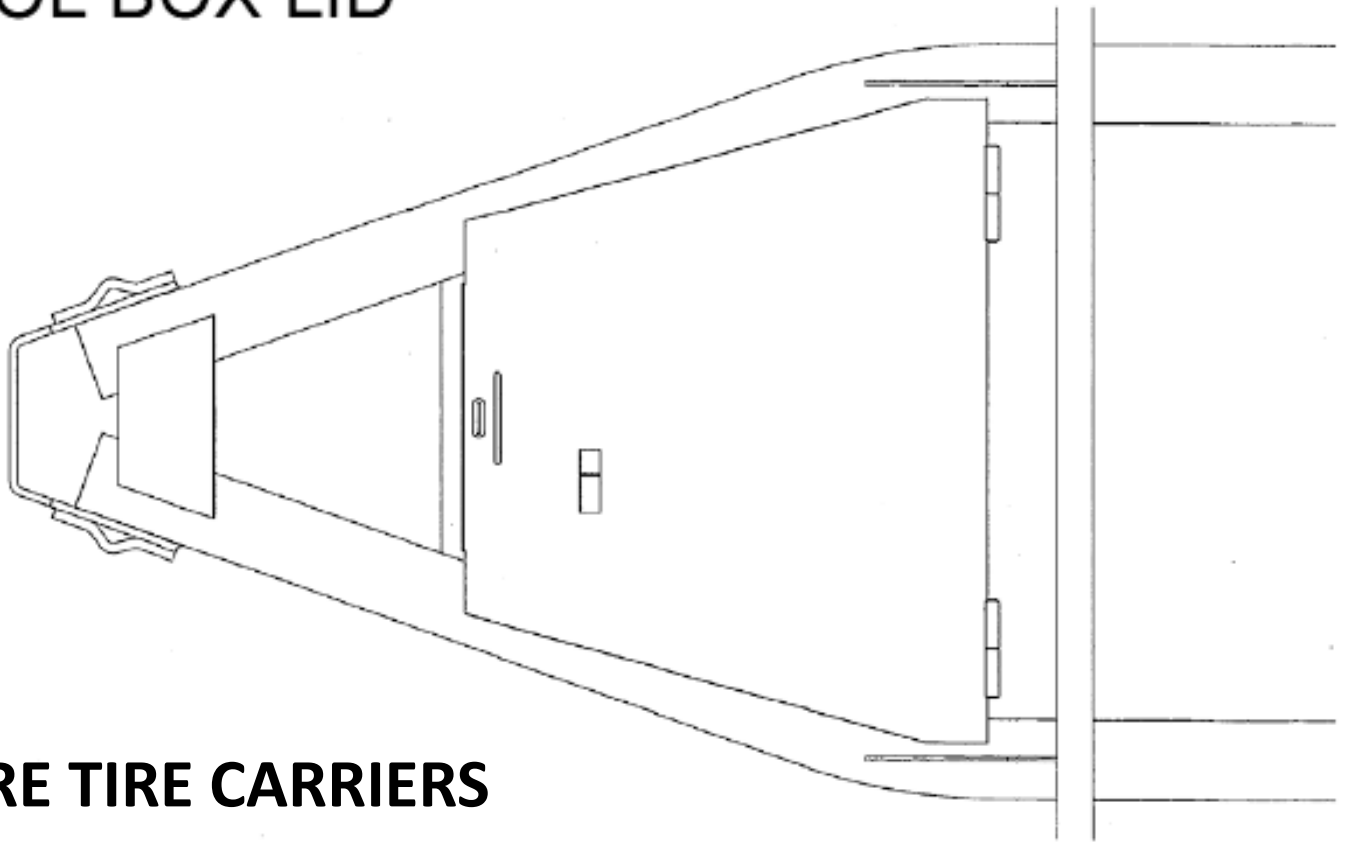
GRAY: PANTONE 424C GRAY
 BLACK: PANTONE HEXACHROME BLACK C
 RED: PANTONE 207C RED
 YELLOW: NO MATCH AVAILABLE
 WHITE: UNIVERSAL GLOSS BRIGHT WHITE

INTERSTATE TRAILERS, INC.

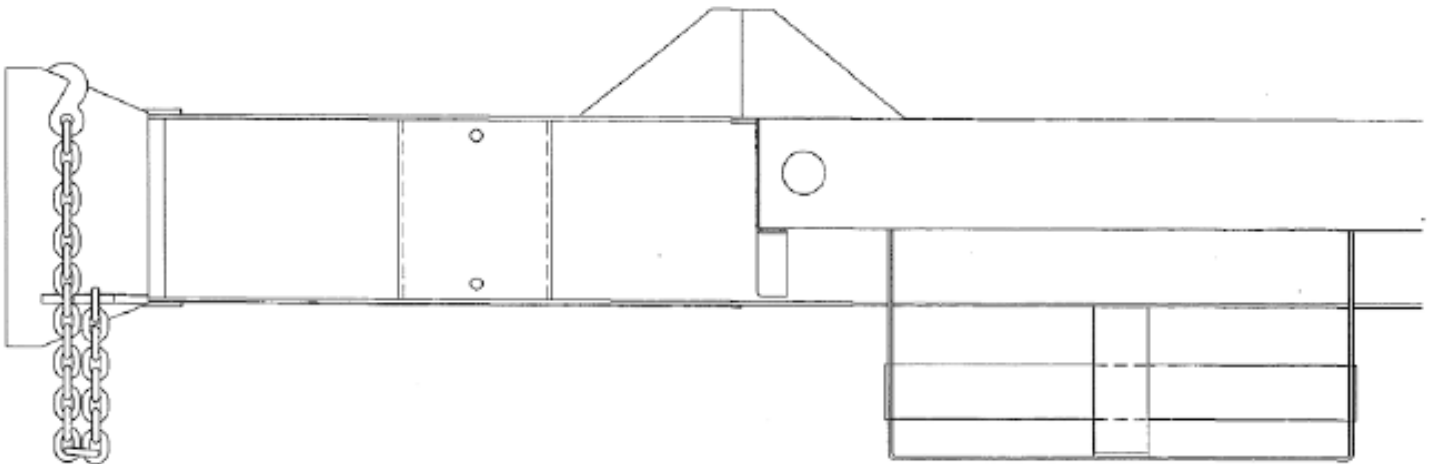
 <p>PINTLE EYE LOCK PART# 5805-2</p>	 <p>FLOOR SCREWS PART#6202</p>	 <p>2X8 OAK DECKING PART# 6200</p>
 <p>50 TON PINTLE HOOK PART# 2354454</p>	 <p>DECK CLIP CLIP KIT PART# 4644 # 4644-1</p>	 <p>50 TON PINTLE HOOK PART# 2354454S</p>
 <p>RATCHET BINDER 1/2" PART# 4595 3/8" PART# 4594</p>	 <p>4"X30' WINCH STRAP PART# 0430</p>	 <p>SELF CONTAINED RATCHET STRAP 2" – PART# 9511-1</p>

INTERSTATE TRAILERS, INC.

TOOL BOX LID



SPARE TIRE CARRIERS



LOCKABLE TOOL BOX LID,W/HINGE (WELD ON)

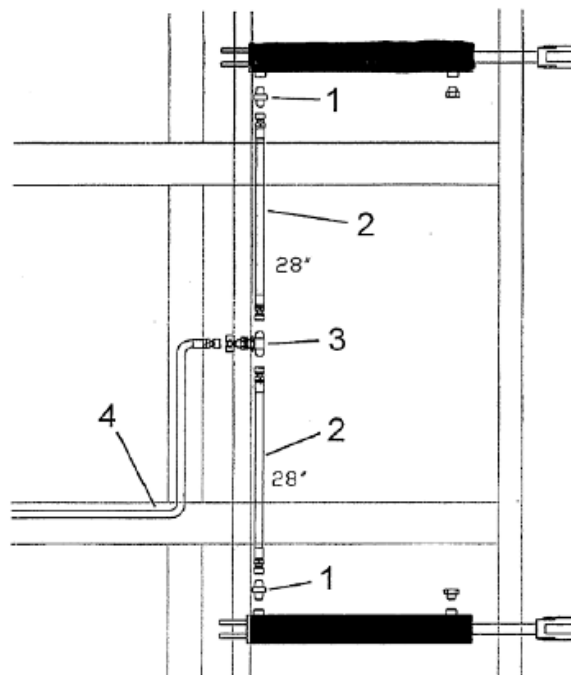
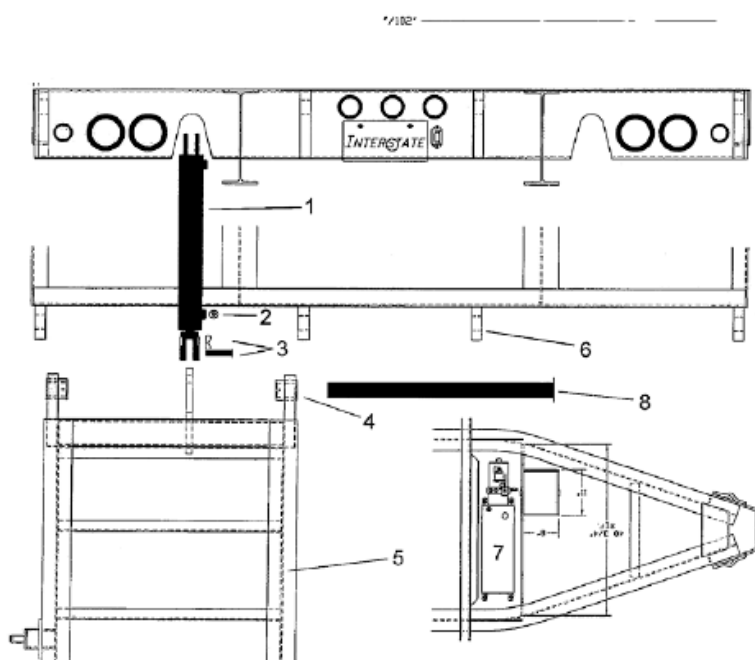
6835

UPRIGHT TIRE CARRIER

6100-1

UNDER MOUNT TIRE CARRIER

6100



ITEM#	QTY PER TRAILER	DESCRIPTION	PART NUMBER
1	2	HYDRAULIC CYLINDER	4020
2	2	BREATHER, SINTERED BRASS	4020-1
3	4	CYLINDER MOUNT PIN AND HAIRCLIP	5252
4	4	RAMP PIVOT BUSHING	6083
5	2	RAMP, VARIOUS STYLES CALL FACTORY	
6	4	RAMP PIN MOUNTING EAR	6082
7	1	HYDRAULIC POWER UNIT	5038
8	2	RAMP PIVOT PIN, VARIOUS LENGTHS CALL FACTORY	
*	2	CYLINDER REBUILD KIT	4020-2
	1	SWITCH AND BOX FOR PUMP	3779
	1	SWITCH BOX FOR PUMP (BIFOLD RAMPS)	3779-1
7	1	HYDRAULIC POWER UNIT (BIFOLD RAMPS)	5039
*		SOLENOID KIT FOR PUMP	5038-1

*NOT SHOWN

ITEM#	QTY PER TRAILER	DESCRIPTION	PART NUMBER
1	2	FITTING, HYDRAULIC CYLINDER	6084
2	2	HOSE, HYDRAULIC 28"	6085
3	1	TEE FITTING, HYDRAULIC	6086
4	1	HYDRAULIC LINE, VARIOUS LENGTHS CALL FACTORY	6087

INTERSTATE TRAILERS, INC.

Hutch 9700 Alignment Procedure

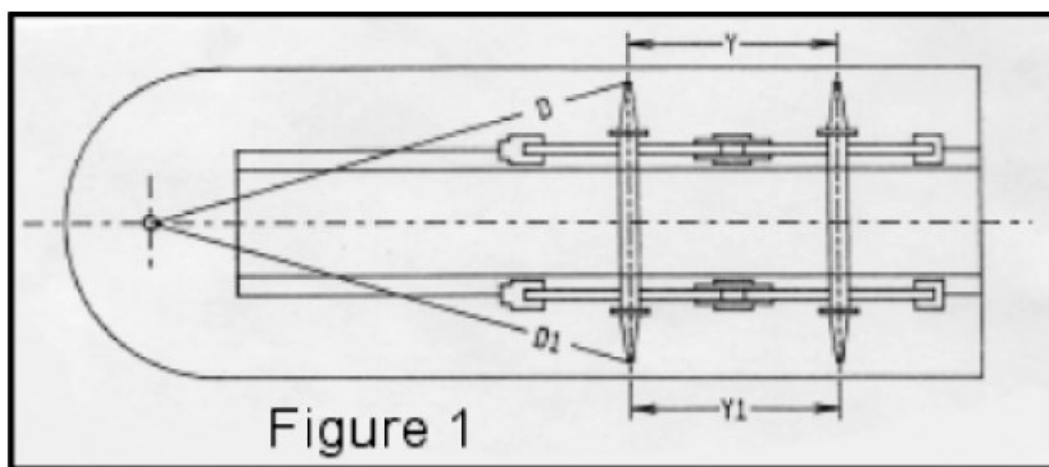
Your Hutch suspension is designed to require a minimum of service. The key to a successful service life, however, is a thorough inspection of the suspension after a short break-in period to make certain all nuts and bolts are properly torqued, and a regular periodic inspection thereafter. This is essential to assure continuous trouble free operation. The frequency of your preventative maintenance inspections depends upon your operation, such as: the terrain your trailers operate over, the mileage per month, etc.

Alignment

Before attempting alignment, make sure the trailer is not loaded. Be sure the suspension has not been placed in a "blind" by being jack-knifed into a bay or having gone through any other unusual maneuver. The suspension must be free and loose in order to obtain a true alignment.

To align, measure the distance from the king-pin / pintle eye to the centerline of the spindle on the front axle. If the dimensions "D" and "D1" (figure 1, below) are not the same, turn the adjustable torque arm screw until the two dimensions are the same. Next, align any succeeding axle from the front axle. Move the adjustable torque arm until "Y" and "Y1" (figure 1, below) are the same. When all axles are properly aligned, make sure all clamp bolts on adjustable torque arms are tightened to 85 foot pounds.

It is to be understood that all alignments are to be performed on smooth, level and flat surfaces with the trailer empty. True readings cannot be obtained if alignment is performed on loaded trailers in the street or on rough terrain.

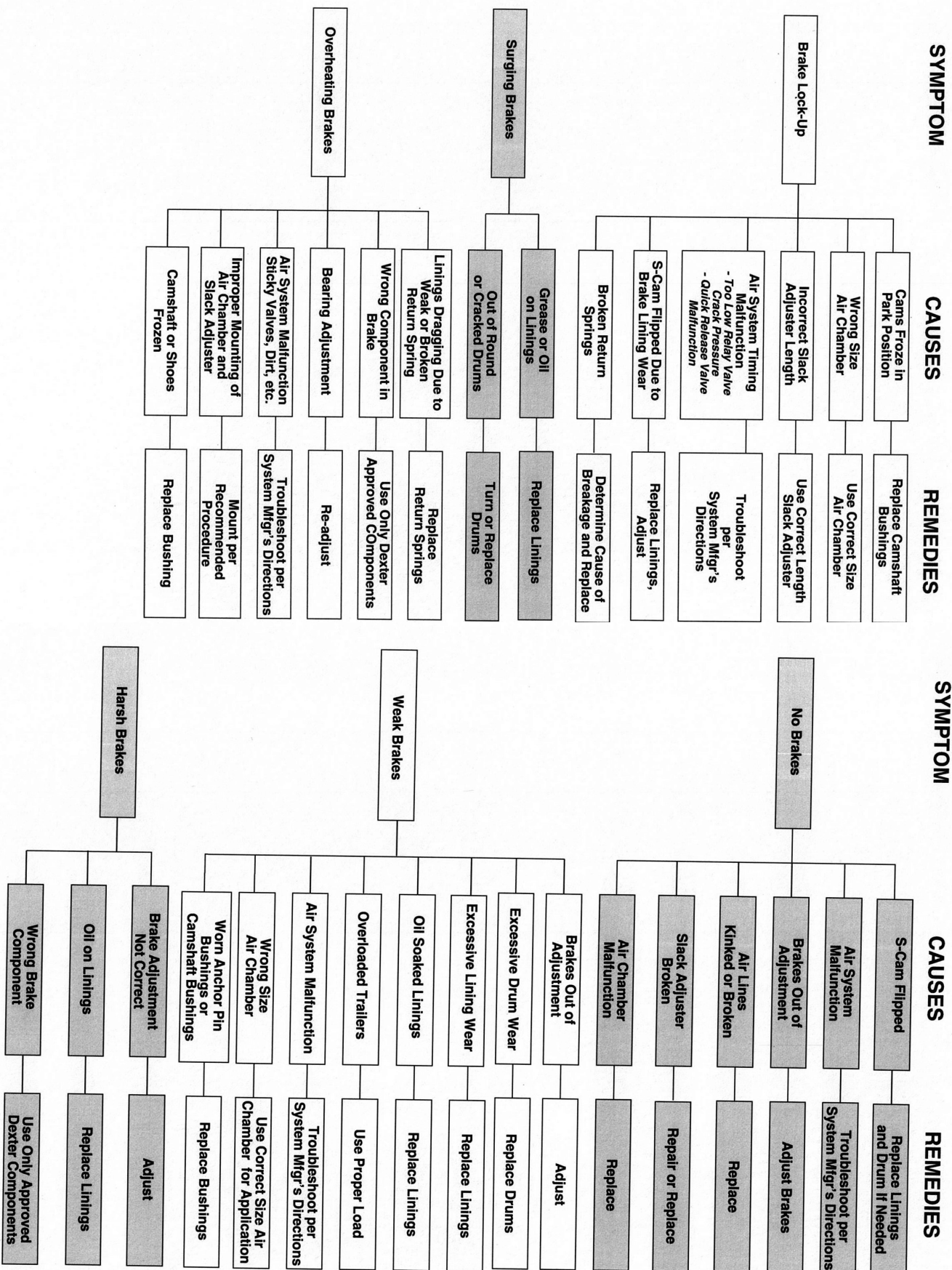


Note to dealers:

All Interstate trailers come from the factory pre-aligned and should not require any adjustments prior to customer delivery.

Braking Systems - Air

Troubleshooting



INTERSTATE TRAILERS, INC.

Braking Systems - Electric

Troubleshooting

SYMPTOM	CAUSES	REMEDIES	SYMPTOM	CAUSES	REMEDIES
No Brakes	Open Circuits	Find & Correct	Brakes Pull to One Side	Wrong Magnet Lead Wire Color	Correct
	Severe Underadjustment	Adjust Brakes		Incorrect Adjustment	Adjust
	Faulty Controller	Test & Correct		Grease or Oil on Linings or Magnets	Clean or Replace
	Short Circuits	Find & Correct		Broken Wires	Find & Repair
	Grease or Oil on Magnets or Linings	Clean or Replace		Bad Connections	Find & Repair
	Corroded Connections	Clean & Correct Cause of Corrosion		Underadjustment	Adjust
	Worn Linings or Magnets	Replace		Improper Synchronization	Correct
Weak Brakes	Scored or Grooved Brake Drums	Machine or Replace	Harsh Brakes	Improper Controller	Change
	Improper Synchronization	Correct		Faulty Controller	Test & Correct
	Underadjustment	Adjust Brakes		Underadjustment	Adjust
	Glazed Linings	Reburnish or Replace		Lack of Lubrication	Lubricate
	Overloaded Trailer	Correct		Broken Brake Components	Replace Component
	Underadjustment	Adjust		Incorrect Brake Components	Correct
	Improper Synchronization	Correct	Noisy Brake	Grease or Oil on Linings or Magnet	Clean or Replace
Locking Brakes	Faulty Controller	Test & Correct		Out-of-Round or Cracked Brake Drums	Machine or Replace
	Loose, Bent or Broken Brake Components	Replace Components		Faulty Controller	Test & Correct
	Out-of-Round Brake Drums	Machine or Replace		Overadjustment	Readjust
	Insufficient Wheel Load	Adjust System Resistor and Synchronize		Out-of-Round Brake Drums	Machine or Replace
	Faulty Controller	Test & Correct		Incorrect Brake Components	Replace
	Broken Wires	Repair or Replace		Loose, Bent or Broken Brake Components	Replace
	Loose Connections	Find & Repair	Surging Brakes	Faulty Breakaway Switch	Repair or Replace
Intermittent Brakes	Faulty Ground	Find & Repair		Loose Wheel Bearing Adjustment	Adjust
				Bent Spindle	Replace Axle
Intermittent Brakes			Dragging Brakes		

INTERSTATE TRAILERS, INC. **ABS DIAGNOSTICS**

Blink Code Diagnostics

The Meritor WABCO Enhanced Easy-Stop Trailer ABS ECU detects any electrical fault in the trailer ABS. Each of the faults has a code. When a fault occurs, the ECU stores the code for that fault in the memory.

There are two kinds of faults: active and stored. Active faults are those currently existing in the system, such as a broken wire. Stored faults are faults that have occurred but do not presently exist. Active faults can be cleared only after repairs are completed. Stored faults can only be diagnosed with TOOLBOX Software or the Pro-Link 9000.

The ECU signals a malfunction by lighting both the internal and external indicator lamp when a fault exists. The external ABS indicator lamp is usually mounted on the left rear of the trailer, near the rear wheels.

There are two ways to obtain blink codes:

- Ignition Power Activation (recommended method)
- Diagnostic Tool

Although the ECU can store multiple faults in its memory, it only displays one blink code at a time. This is why it is important to recheck the blink codes after repairing a fault. If there are additional codes in the memory, they only blink after you have repaired the first fault.

Stored faults, clear all and end of line test modes are available with the TOOLBOX Software or the Pro-Link 9000.

Ignition Power Activation

Ignition Power Activation is the process of using the vehicle's ignition switch (or interrupting the power on the blue wire by some other means) to display blink codes on the trailer ABS indicator lamp located on the side of the trailer. This method is for constant power vehicles only.

To obtain blink codes using ignition power activation, perform the following procedure:

1. Turn the ignition switch on for no longer than 5 seconds. The ABS indicator lamp will be on.
2. Turn the ignition switch off. The ABS indicator lamp will go out.

3. Turn the ignition switch on. The ABS indicator lamp will then come on, then go out.
4. The blink code will be displayed three times by the ABS indicator lamp on the trailer.

NOTE: For ignition power activation, power is provided by the Ignition switch.

BLINK CODES		
Blink Code	Problem Area	Action
3	Sensor BU1	Determine sensor location. Check sensor installation. Make necessary repairs.
4	Sensor YE1	Determine sensor location. Check sensor installation. Make necessary repairs.
5	Sensor BU2	Determine sensor location. Check sensor installation. Make necessary repairs.
6	Sensor YE2	Determine sensor location. Check sensor installation. Make necessary repairs.
7	External ABS modulator valve	Verify proper electrical installation. Check power supply. Make necessary corrections.
9	Internal modulator failure, inlet valve #2	Verify proper installation. If code continues, contact Meritor WABCO for assistance.
10	Internal modulator failure, inlet valve #1	Verify proper installation. If code continues, contact Meritor WABCO for assistance.
11	Internal modulator failure, outlet valve	Verify proper installation. If code continues, contact Meritor WABCO for assistance.
14	Power Supply	Verify proper electrical installation. Check power supply. Make necessary corrections.
15	ECU Failure	Verify proper installation. If code continues, contact Meritor WABCO for assistance.
16	SAE J1708 Failure	Internal failure, contact Meritor WABCO.
17	SAE J2497 (PLC) Failure	Internal failure, contact Meritor WABCO.
18	Generic I/O Failure	Verify proper electrical installation. Check power supply. Make necessary corrections.

For diagnostic and trouble-shooting assistance, call Meritor WABCO at 1-800-535-5560

INTERSTATE

TRAILERS, INC.

Trailer Operations Check List

Proper Loading Procedures:

1. Ensure that tow vehicle and trailer are on level ground.
2. Engage parking brake on tow vehicle. Place chock blocks in front of and behind trailer tires.
3. Check to see that hitch is properly secured to tow vehicle.
4. Raise landing gear and secure in travel position to avoid damage during loading.
5. Clear trailer deck of all debris and obstacles before loading.
6. Fold down loading ramps making sure that all personnel are clear of a dropping ramp or any pinch points. Ramps are extremely heavy and caution should be exercised at all times while raising and lowering.
7. Adjust loading ramps so that center of ramps line up with track centers of equipment being loaded.
8. Clear ramps of any debris such as mud, ice or snow that could cause loss of traction while loading.
9. Load equipment and position so that load is properly balanced both front to back and side to side. An improperly balanced load may cause abnormal tire wear, suspension damage or dangerous towing characteristics such as fishtailing.
10. Secure load per D.O.T. Federal Motor Carrier Safety Regulations 392.9, 393.100 and 393.102. If you have any questions, contact your local law enforcement or D.O.T. before towing.
11. Raise and secure loading ramps into travel position using the same precautions outlined in step 6 above.
12. Remove all chock blocks and store properly.
13. Make a final visual inspection of the tow vehicle, trailer and load for any abnormalities.

***** The above steps are to provide you with a basic guideline for safely loading your trailer. Common sense and extreme caution should always be exercised while applying these steps.

Pre-Trip Inspection:

1. Check and correct air pressure on all tires of the tow vehicle and trailer.
2. Make sure the wheel lug nuts/bolts on the trailer are tightened to the correct torque specifications. Failure to do so may result in wheel damage.

Page 2 of 2 – Trailer Operations Check List

3. Be sure the hitch, coupler, draw bar, and other equipment that connect the trailer and the tow vehicle are properly secured and adjusted. Trailer should run level when loaded.
4. Check that the wiring is properly connected - not touching the road, but loose enough to make turns without disconnecting or damaging the wires.
5. Make sure all running lights, brake lights, turn signals, and hazard lights are working.
6. Attach safety chains to tow vehicle, cross them if possible. Chains should be loose enough as not to bind while turning.
7. Verify that the brakes on the tow vehicle and trailer are operating correctly. Air lines should be secured in a manner which prevents chafing and pinching during travel.
8. Be sure the trailer jack, tongue support, and any attached stabilizers are raised and locked in place.
9. Check load distribution to make sure the tow vehicle and trailer are properly balanced front to back and side to side.
10. Inspect D-rings and clips before use - replace if cracked, worn, or deformed.
11. Check to ensure that all loads have been secured per D.O.T. Federal Motor Carrier Safety Regulations 392.9, 393.100 and 393.102. If you have any questions, contact your local law enforcement or D.O.T. before towing. **
12. While in transit, periodically stop to check load to ensure that securement devices such as chains, binders and straps are tight and load has not shifted.

** Requirements for securing loads differ from state to state. Please familiarize yourself with all state and local regulations before transporting any loads.

Weekly Inspections:

1. Inspect tow hitch for excessive wear. Replace when needed.
2. Check for proper tow hitch to noseplate connection. Tighten as needed.
3. Inspect wheels for cracks or deformities. Replace if needed.
4. Inspect suspension components for excessive wear, cracks or deformities. Replace or repair as needed.
5. Inspect trailer frame for cracks and deformities. Repair as needed.
6. Check tires for excessive or unusual wear. Unusual wear may indicate a suspension alignment or tire inflation problem. Repair or replace as needed.
7. Inspect decking for broken, rotted or missing boards. Replace as needed.

**** Information provided is a basic guideline for safe trailer operation and in no way supersedes Federal, State or Local regulations.

***INTERSTATE* TRAILERS, INC.**

MAINTENANCE SCHEDULE

- TIRES** - CHECK DAILY - MAINTAIN 235/85R16 AND 245/75R16 TIRES @ 80 PSI COLD.
- WHEEL LUGS** - CHECK WEEKLY - LIGHTLY GREASE STUDS TORQUE TO 200 FL. LBS.
- WHEEL BEARINGS** - CHECK OIL LEVEL DAILY. USE SAE 80W-90 API-GL-5 OIL
- BRAKES** - SHOULD BE CHECKED FOR ADJUSTMENT MONTHLY. BRAKE LININGS SHOULD BE REPLACED WHEN LININGS ARE WORN TO RIVET HEADS (AIR) OR BACKING PLATE (ELECTRIC). DO NOT WEAR LININGS PAST RIVET HEADS OR INTO BACKING PLATE.
- MAGNETS** - CHECK AT ANY INDICATION OF BRAKE PROBLEMS, AT BRAKE REPLACEMENT BEARING INSPECTION, OR ANY TIME A HUB IS PULLED. MAGNETS SHOULD BE REPLACED IF BARE WIRE IS SHOWING AT WEAR SURFACE, SURFACE OF MAGNET IS GOUGED OR SCORED, OR IF MAGNET IS WORN UNEVENLY
- SUSPENSION** - THE HUTCHENS 9700 SUSPENSION DOES NOT REQUIRE LUBRICATION. THE SUSPENSION SHOULD BE INSPECTED FOR WEAR PERIODICALLY AND ANY WORN PARTS SHOULD BE REPLACED IMMEDIATELY.
- TOW RING** - INSPECT FOR TIGHTNESS DAILY BEFORE USE. RING PLATE MUST BE TIGHT AGAINST NOSE PLATE TO PREVENT NOSE PLATE DEFORMATION. RING SHOULD BE INSPECTED DAILY AND REPLACED IF RING SHOWS EXCESSIVE WEAR. TO INSTALL RING ON TRAILER DETERMINE PROPER HEIGHT ACCORDING TO THE TOW VEHICLE WHICH WILL BE USED. INSTALL TOW RING WITH BOLT IN THE LOWER POSITION WHENEVER POSSIBLE. TIGHTEN NUTS ON BOLT AND STUD UNTIL BOTH LOCK WASHER ARE FULLY COMPRESSED. DO NOT USE WITH A TOW HITCH THAT IS EXCESSIVELY LOOSE OR ONE THAT BINDS WHEN TURNING.
- LIGHTS** - CHECK PLUG FOR CONDITION AND TIGHTNESS OF TERMINALS. INSPECT ALL LIGHTS FOR PROPER OPERATION DAILY AND REPLACE BULBS AS NEEDED.
- JACK(S)** - CHECK JACK DAILY FOR ANY PHYSICAL DAMAGE OR LACK OF OPERATION DUE TO RUST OR CORROSION. REPLACE IF SEVERELY RUSTED OR DAMAGED. CHECK MOUNTING BOLTS FOR TIGHTNESS AND BE SURE LOCKING HARDWARE IS USED.

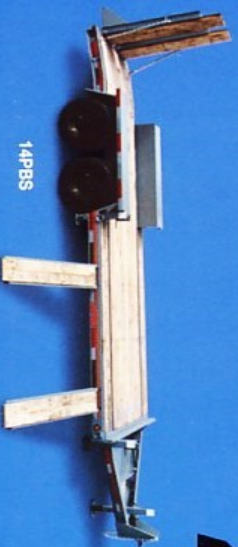
WARNINGS

- *WARNING*** - BE SURE TRAILER IS CONNECTED TO TOW VEHICLE WHEN LOADING AND UNLOADING MACHINERY. LOCK TRUCK BRAKES BEFORE LOADING AND UNLOADING
- *WARNING*** - CHECK TIRE INFLATION DAILY
- *WARNING*** - CHECK WHEEL LUGS WEEKLY
- *WARNING*** - USE CAUTION WHEN RAISING OR LOWERING REAR RAMPS.
DO NOT PLACE HANDS OR FEET UNDER RAMPS WHEN RAISING OR LOWERING!
- *WARNING*** - TRAILER SHOULD BE LEVEL WHEN FULLY LOADED. ADJUST HITCH TO MAKE TRAILER LEVEL WHEN LOADED.

HUTCHENS RECOMMENDS THAT ALL NUTS AND BOLTS BE CHECKED TO INSURE THAT THE RECOMMENDED TORQUE VALUES ARE BEING MAINTAINED AFTER AN INITIAL BREAK IN PERIOD (APPROXIMATELY 1000 MILES) AND AT LEAST EVERY 4 MONTHS PERIODICALLY THEREAFTER.

INTERSTATE

* The Definition of Value *



14P8S



40TDL



40APC



10ST/12ST



100SDGN



Ask Your
Sales Representative
for Details

INTERSTATE TRAILERS, INC.

1101 HERITAGE PARKWAY
MANSFIELD, TEXAS 76063
www.interstatetrailers.com



200T

"Take the 10-Ton Challenge"



50/70LBG



50TDL



40DLA



50DLA