

INTERSTATE

TRAILERS, INC.

PARTS & SERVICE MANUAL



20TDT, 24TDT, 20TDA & 24TDA

TILT TRAILERS

1101 HERITAGE PARKWAY • MANSFIELD, TX 76063 • 800-433-5384



A note from Interstate Trailers to our valued dealers and customers.

The scope of this manual is to provide parts and service information for year model 1998 and newer DT/DTA series trailers. We have made our best effort to document the common replacement parts for these trailers. However, Interstate Trailers Inc. builds many custom trailers which may be equipped with parts and options not listed in this manual. Also, trailers older than model year 1998 have some differences and will require help from the factory staff to locate the correct parts. If you encounter such a situation please call our factory at 1-800-433-5384 between the hours of 8 a.m. to 5 p.m. standard time, M-F excluding holidays. Interstate Trailers recommends that you always have your VIN number (trailer serial) ready when calling a dealer or the factory to assist in locating the correct parts for your trailer. Interstate Trailers will make every effort to help find the correct replacement parts for your trailer and will strive to make your ownership experience as trouble free as possible.

***In April of 2000 Dexter Axle made a design change to the electric brakes used on all trailers with electric brakes listed in this catalog. This manual covers only the new style (post 04/2000) brakes. The difference is the construction of the backing plate, pre 04/2000 the backing plate was a stamped sheet metal plate and post 04/2000 the backing plate changed to a sand cast steel plate. The brake components differ between the types so please check your trailer prior to ordering parts to insure accuracy.**

Contact Information

**Interstate Trailers Inc.
1101 Heritage parkway
Mansfield, TX 76063**

**1-800-433-5384 phone
817-453-2672 parts department fax
www.interstatetrailers.com web address**

**Thank you!
The Interstate Trailers team.**

<u>SUBJECT</u>	<u>PAGE</u>
20 TDT ELECTRIC BRAKE COMPONENTS (PRE 2012)	1
20 TDA AIR BRAKE COMPONENTS	2
20 TDT / TDA HUB & DRUM	3
20 TDT HUB & DRUM (AFTER 02/2012)	4
24 TDT ELECTRIC BRAKE COMPONENTS	5
24 TDA AIR BRAKE COMPONENTS	6
24 TDT / TDA HUB & DRUM COMPONENTS	7
SUSPENSION COMPONENTS	8
UNDER RIDE BUMPER SYSTEM	9
AIR PLUMBING	10
TILT CUSHION CYLINDER	11
TILT LATCH PARTS	12
LANDING GEAR	13
PINTLE HITCH & COMPONENTS	14
GOOSENECK HITCH	15
LIGHTING	16
TDT HARNESS DIAGRAM	17
TDT WIRING DIAGRAM	18
TDA HARNESS DIAGRAM	19
TDA WIRING DIAGRAM	20
DECAL KIT	21
MISC. PARTS	22
ALIGNMENT PROCEDURE	23
ABS DIAGNOSTICS	24
TROUBLESHOOTING- AIR BRAKES	25
TROUBLESHOOTING- ELECTRIC BRAKES	26
MAINTENANCE SCHEDULE	27
TRAILER OPERATIONS CHECK LIST	28 &29
APC RAMPS	30
TOOL BOX LIDS & SPARE TIRE CARRIERS	31
MISC. PARTS	32

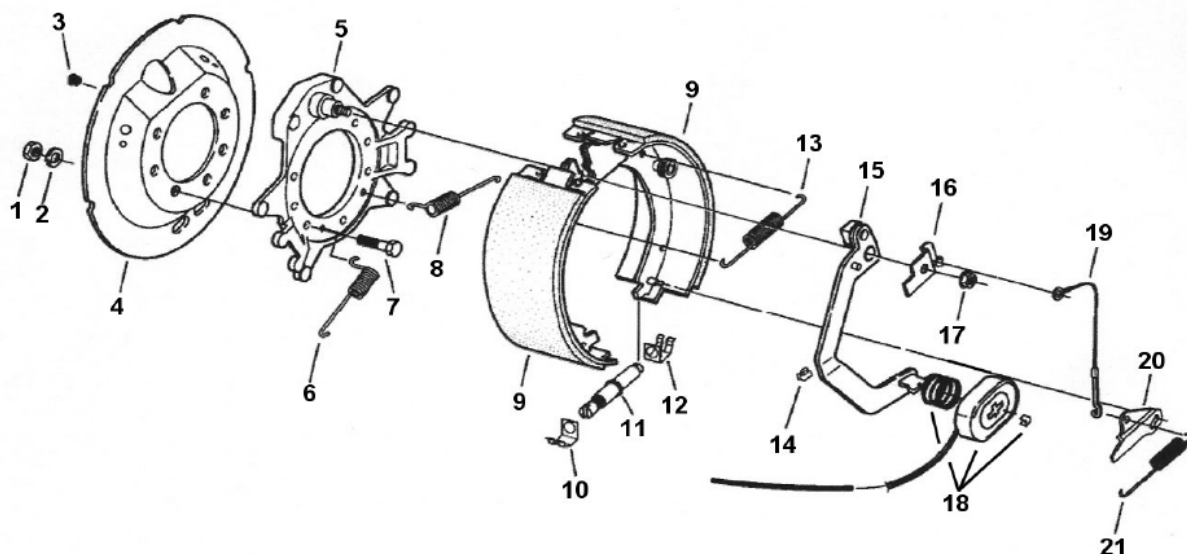
INTERSTATE

TRAILERS, INC.

HD 10K AXLES – STANDARD APRIL 2000-FEB 2012

—OPTIONAL FEB 2012– PRESENT

20TDT ELECTRIC BRAKE

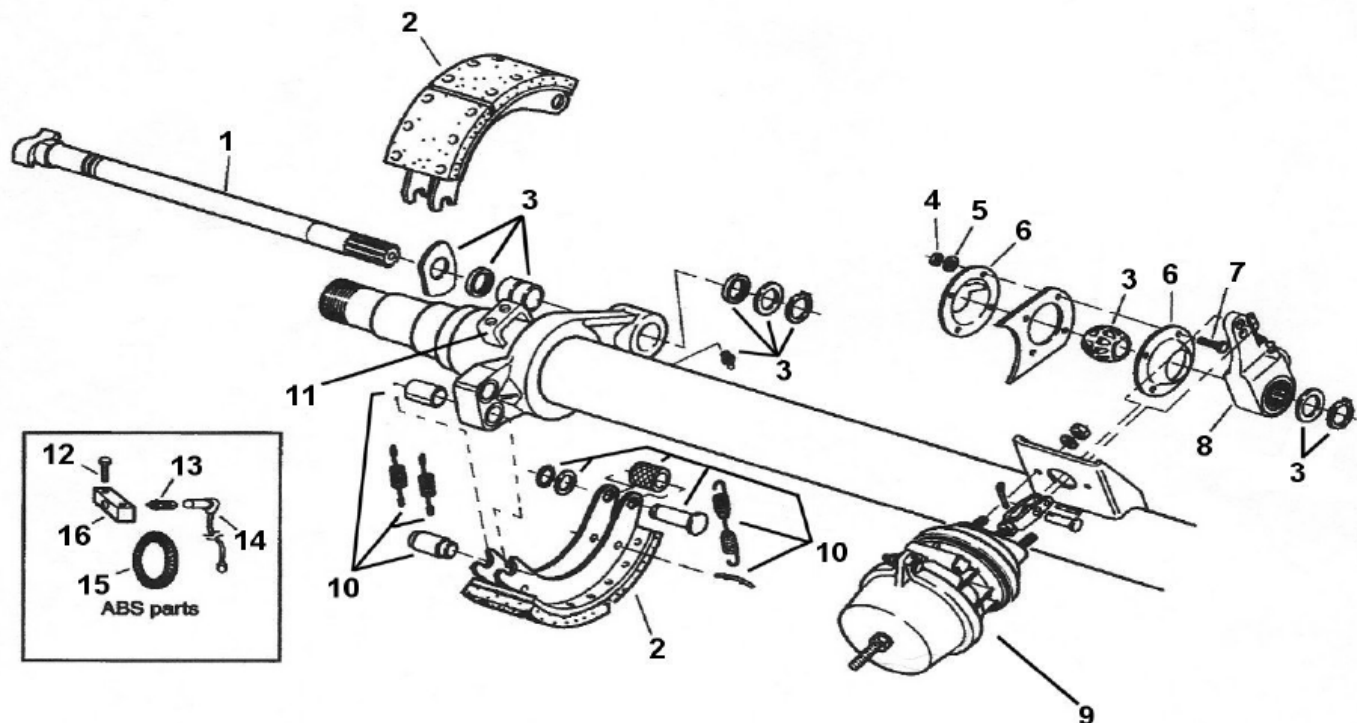


ITEM#	QTY PER TRAILER	DESCRIPTION	PART NUMBER
1	28	BRAKE MOUNTING NUT	5295
2	28	BRAKE MOUNTING LOCK WASHER	5301
3	4	WIRE GROMMET	4843
4	4	DUST SHIELD	6207-1
5	4	CAST BACKING PLATE	7750-1
6	4	CENTERING SPRING	7555
7	28	BRAKE MOUNTING BOLT	5297
8	4	CENTERING SPRING	7555
9	2	BRAKE SHOE KIT, ROADSIDE	7551-1
9	2	BRAKE SHOE KIT, CURBSIDE	7552-1
10	4	ADJUSTER CLIP, THREAD END	4613
11	2	BRAKE ADJUSTER, ROADSIDE	7534
11	2	BRAKE ADJUSTER, CURBSIDE	7535
12	4	ADJUSTER CLIP, BARREL END	4613-1
13	4	BRAKE SHOE RETURN SPRING	5335
14	12	WIRE CLIP	4846-1
15	2	ACTUATOR ARM, ROADSIDE	7553
15	2	ACTUATOR ARM, CURBSIDE	7554
16	2	ARM/SHOE RETAINER, ROADSIDE	7557
16	2	ARM/SHOE RETAINER, CURBSIDE	7558
17	4	FLANGE NUT	7543
18	4	MAGNET, KIT	7555-1
19	4	ADJUSTER CABLE	7547-1
20	2	ADJUSTER LEVER, ROADSIDE	7546-1
20	2	ADJUSTER LEVER, CURBSIDE	7548-1
21	4	ADJUSTER LEVER SPRING	7536-1

INTERSTATE

TRAILERS, INC.

20TDA AIR BRAKES



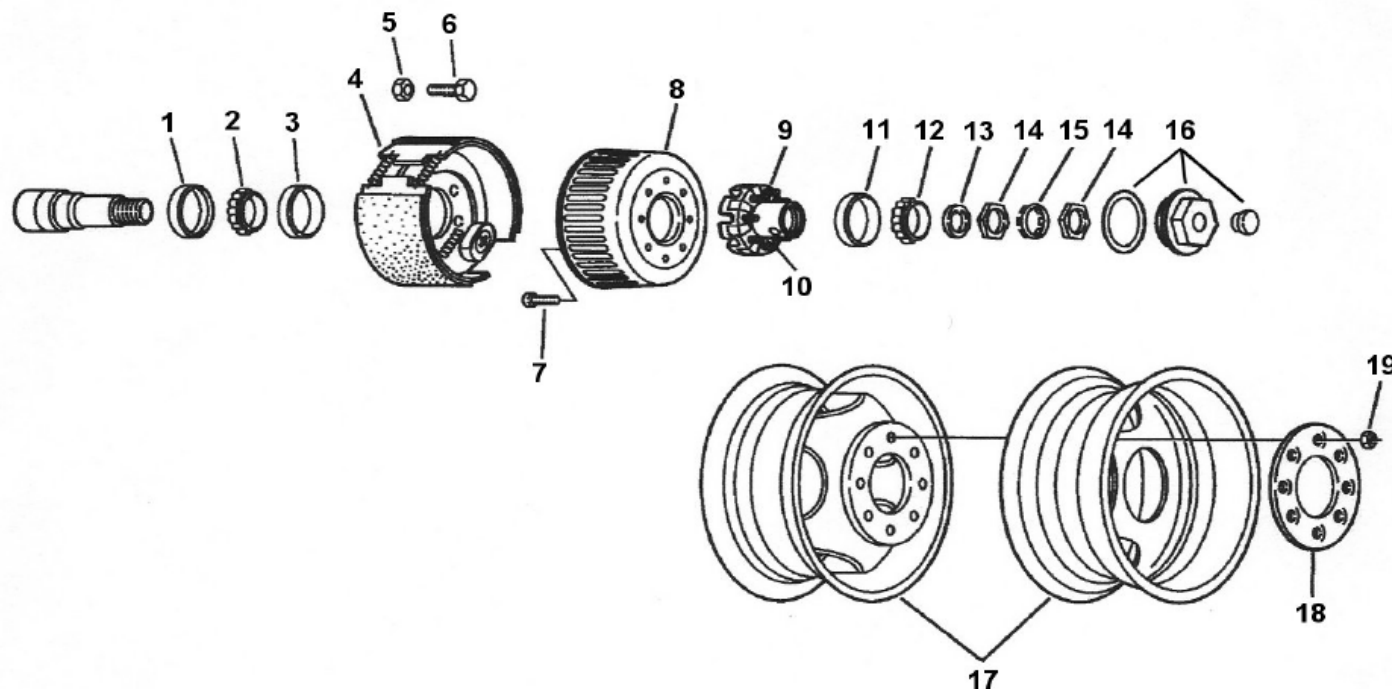
ITEM#	QTY PER TRAILER	DESCRIPTION	PART NUMBER
1	2	CAMSHAFT, ROADSIDE -28 SPLINE	5230
1	2	CAMSHAFT, CURBSIDE -28 SPLINE	5231
2	8	BRAKE SHOE, 12.25 X 4" "PQ"	6237
3	4	BRAKE CAMSHAFT REBUILD/SERVICE KIT	6215
4	16	CAMSHAFT RETAINER PLATE NUT	6290
5	16	CAMSHAFT RETAINER PLATE LOCKWASHER	6289
6	8	CAMSHAFT RETAINER PLATE	6288
7	16	CAMSHAFT RETAINER PLATE BOLT	6287
8	4	SLACK ADJUSTER, 28 SPLINE AUTOMATIC	5207
9	4	SPRING BRAKE CHAMBER 20/24	5209
10	4	BRAKE SHOE HARDWARE KIT	6235
11	2	LOWER ABS MOUNTING BLOCK	7000
12	4	ABS SENSOR MOUNTING BLOCK BOLT	7004
13	2	ABS SENSOR RETAINER CLIP	7002
14	2	ABS SENSOR, 90 DEGREE WIRE	7003
15	2	ABS TONE RING	7006
16	2	UPPER ABS SENSOR MOUNTING BLOCK	7001

INTERSTATE

TRAILERS, INC.

20 TDA HUB & DRUM (ALL YEARS)

20TDT HUB & DRUM (BUILT BEFORE 02/2012)

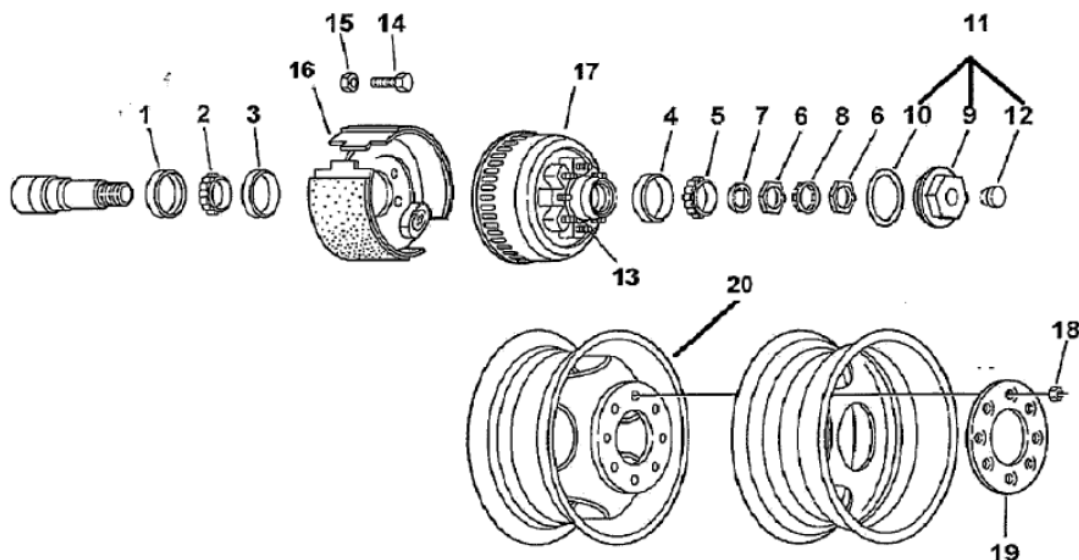


ITEM#	QTY PER TRAILER	DESCRIPTION	PART NUMBER
1	4	HUB OIL SEAL	6010
2	4	INNER BEARING CONE	7493
3	4	INNER BEARING CUP	7494
4	2	COMPLETE ELEC. BRAKE ASSEMBLY, ROAD SIDE	7559
4	2	COMPLETE ELEC. BRAKE ASSEMBLY, CURB SIDE	7560
5	28	BRAKE MOUNTING NUT	5295
6	28	BRAKE MOUNTING BOLT	5297
7	32	DRUM ATTACHING BOLT	7518
8	4	BRAKE DRUM	7561
9	4	HUB, WITH CUPS AND STUDS	7562
10	32	WHEEL STUD	7520
11	4	OUTER BEARING CUP	7496
12	4	OUTER BEARING CONE	7495
13	4	SPINDLE WASHER	5294
14	8	BEARING LOCKNUT	7511
15	4	SPINDLE LOCK WASHER	7512
16	4	HUB OIL CAP ASSEMBLY	7226
17	8	DUAL WHEEL, 16" X 6"	5151
18	4	WHEEL CLAMP RING	5283
19	32	WHEEL NUT	7517

INTERSTATE

TRAILERS, INC.

20 TDT HUB & DRUM (BUILT AFTER 02/2012)

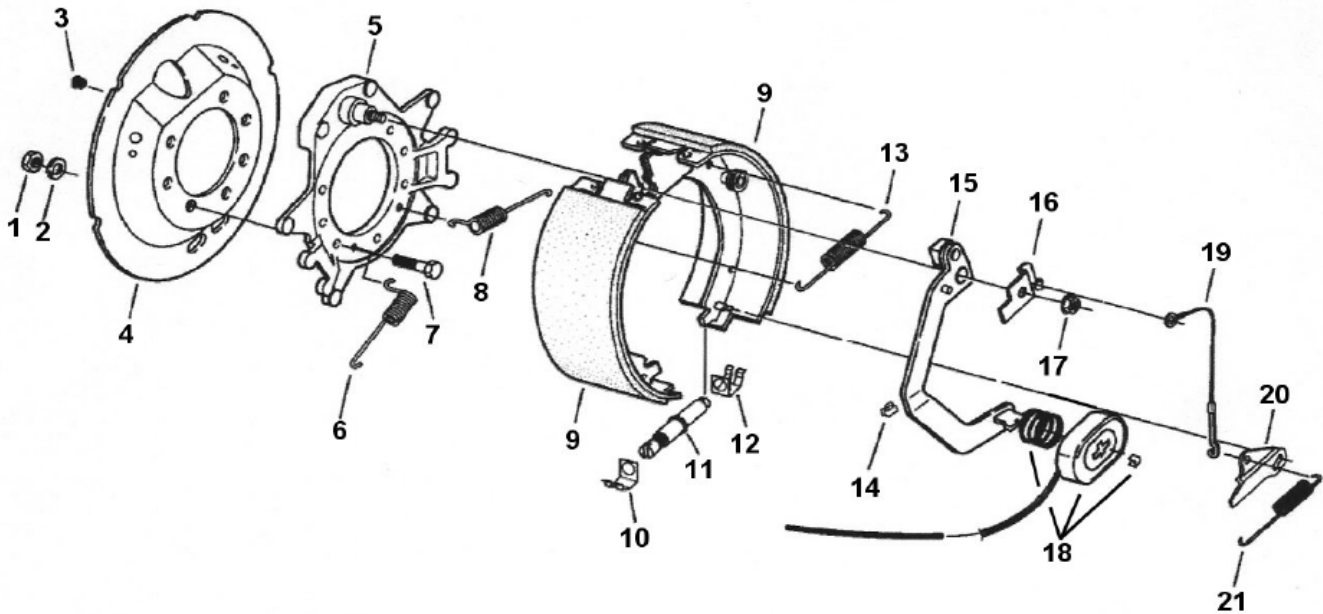


ITEM #	QTY PER TRAILER	DESCRIPTION	PART NUMBER
1	4	OIL SEAL	7220
2	4	INNER BEARING CONE	7495
3	4	INNER BEARING CUP	7496
4	4	OUTER BEARING CUP	5263
5	4	OUTER BEARING CONE	5262
6	8	SPINDLE NUT	7221
7	4	SPINDLE WASHER	7222
8	4	TANG WASHER	7223
9	4	OIL CAP	7217
10	4	"O" RING	7219
11	4	OIL CAP SET (ITEM # 9, 10, & 12)	7225
12	4	OIL CAP PLUG	7515
13	32	5/8 - 18 WHEEL STUD	7520
14	28	BRAKE MOUNTING BOLT	5297
15	28	BRAKE MOUNTING NUT	5295
16	2	L. H. ELECTRIC BRAKE ASSEMBLY	7210
	2	R. H. ELECTRIC BRAKE ASSEMBLY	7212
17	4	HUB & DRUM ASSEMBLY	7209-1
18	32	5/8 - 18 90° CONE NUT	7517
19	4	CLAMP RING	5283
20	8	WHEEL, DUAL 16 X 6	5151

INTERSTATE

TRAILERS, INC.

24 TDT ELECTRIC BRAKE

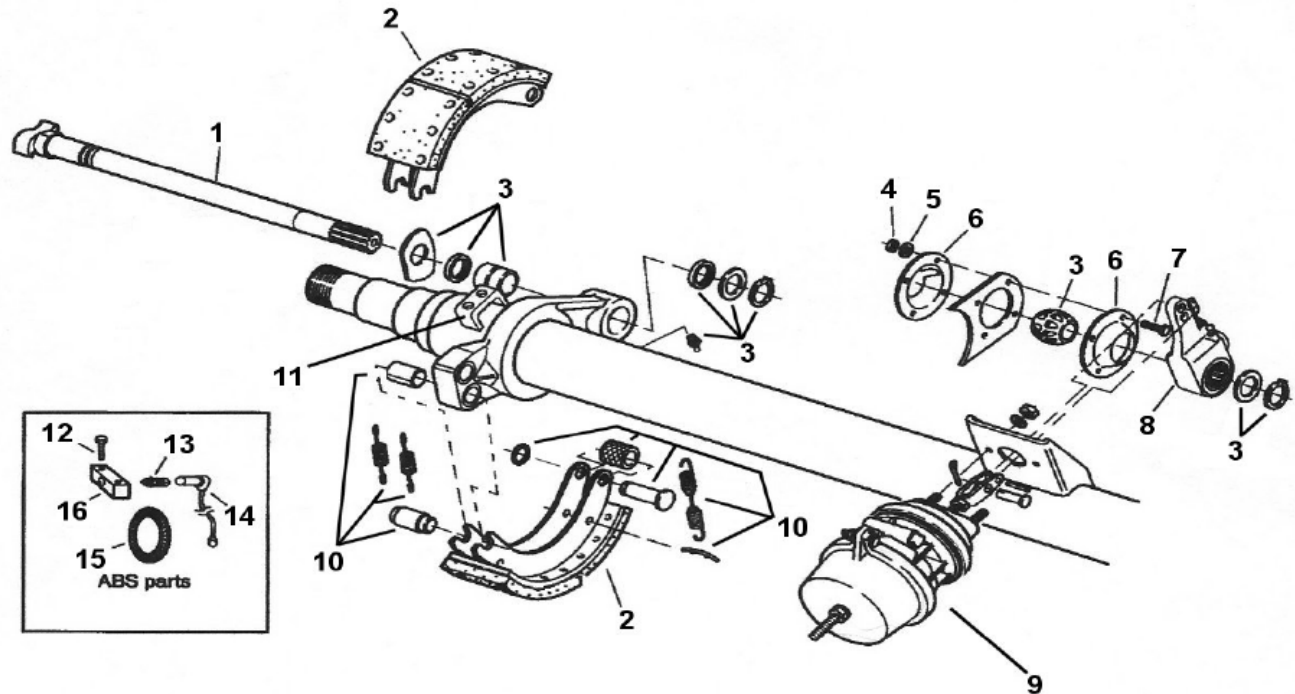


ITEM#	QTY PER TRAILER	DESCRIPTION	PART NUMBER
1	28	BRAKE MOUNTING NUT	5295
2	28	BRAKE MOUNTING LOCK WASHER	5301
3	4	WIRE GROMMET	4843
4	4	DUST SHIELD	6207-2
5	4	CAST BACKING PLATE	7750-1
6	4	CENTERING SPRING	7555
7	28	BRAKE MOUNTING BOLT	5297
8	4	CENTERING SPRING	7555
9	2	BRAKE SHOE KIT, ROADSIDE	7570-1
9	2	BRAKE SHOE KIT, CURBSIDE	7571-1
10	4	ADJUSTER CLIP, THREAD END	4613
11	2	BRAKE ADJUSTER, ROADSIDE	7534
11	2	BRAKE ADJUSTER, CURBSIDE	7535
12	4	ADJUSTER CLIP, BARREL END	4613-1
13	4	BRAKE SHOE RETURN SPRING	5335
14	12	WIRE CLIP	4846-1
15	2	ACTUATOR ARM, ROADSIDE	7537-1
15	2	ACTUATOR ARM, CURBSIDE	7538-1
16	2	ARM/SHOE RETAINER, ROADSIDE	7557
16	2	ARM/SHOE RETAINER, CURBSIDE	7558
17	4	FLANGE NUT	7543
18	4	MAGNET, KIT	7539-1
19	4	ADJUSTER CABLE	7547-1
20	2	ADJUSTER LEVER, ROADSIDE	7546-1
20	2	ADJUSTER LEVER, CURBSIDE	7548-1
21	4	ADJUSTER LEVER SPRING	7536-1

INTERSTATE

TRAILERS, INC.

24 TDA AIR BRAKES

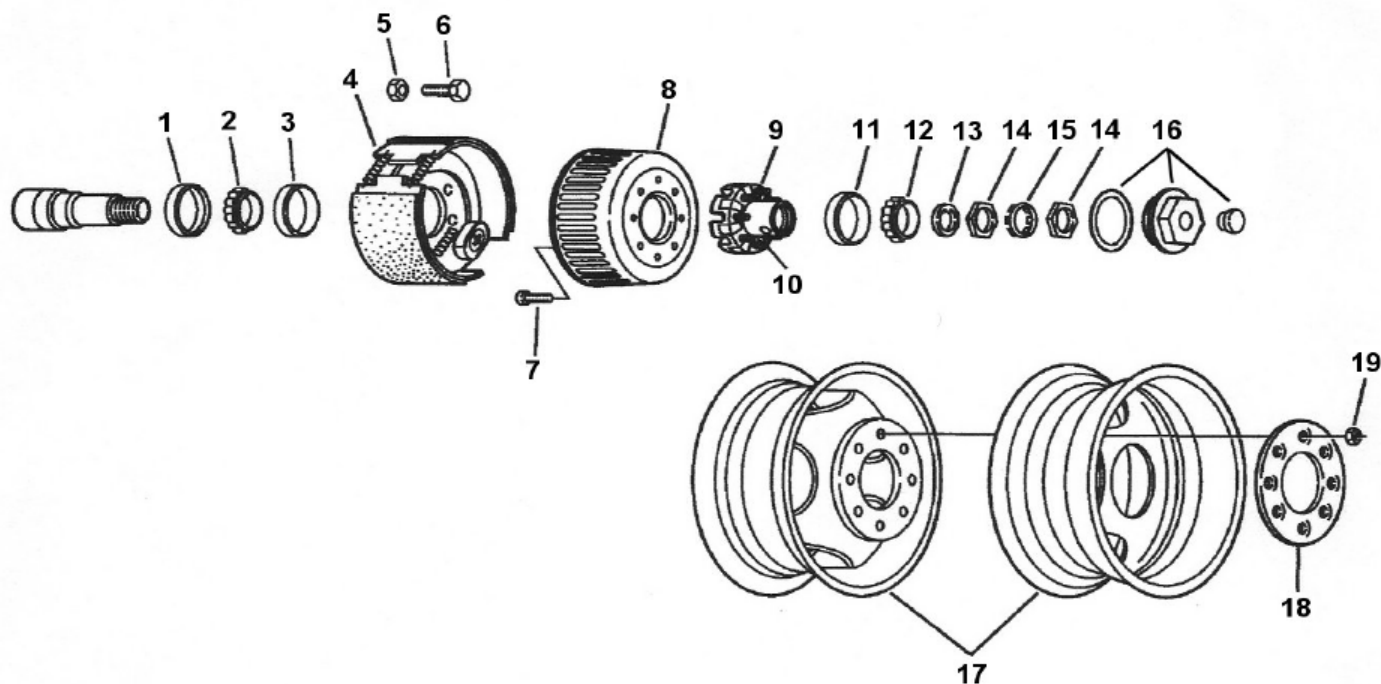


ITEM#	QTY PER TRAILER	DESCRIPTION	PART NUMBER
1	2	CAMSHAFT, ROADSIDE -28 SPLINE	5210
1	2	CAMSHAFT, CURBSIDE -28 SPLINE	5210-1
2	8	BRAKE SHOE, 12.25 X 5" "PQ"	6236
3	4	BRAKE CAMSHAFT REBUILD/SERVICE KIT	6215
4	16	CAMSHAFT RETAINER PLATE NUT	6290
5	16	CAMSHAFT RETAINER PLATE LOCKWASHER	6289
6	8	CAMSHAFT RETAINER PLATE	6288
7	16	CAMSHAFT RETAINER PLATE BOLT	6287
8	4	SLACK ADJUSTER, 28 SPLINE AUTOMATIC	5207
9	4	SPRING BRAKE CHAMBER 24/30	6293
10	4	BRAKE SHOE HARDWARE KIT	6235
11	2	LOWER ABS MOUNTING BLOCK	7000
12	4	ABS SENSOR MOUNTING BLOCK BOLT	7004
13	2	ABS SENSOR RETAINER CLIP	7002
14	2	ABS SENSOR, 90 DEGREE WIRE	7003
15	2	ABS TONE RING	7006
16	2	UPPER ABS SENSOR MOUNTING BLOCK	7001

INTERSTATE

TRAILERS, INC.

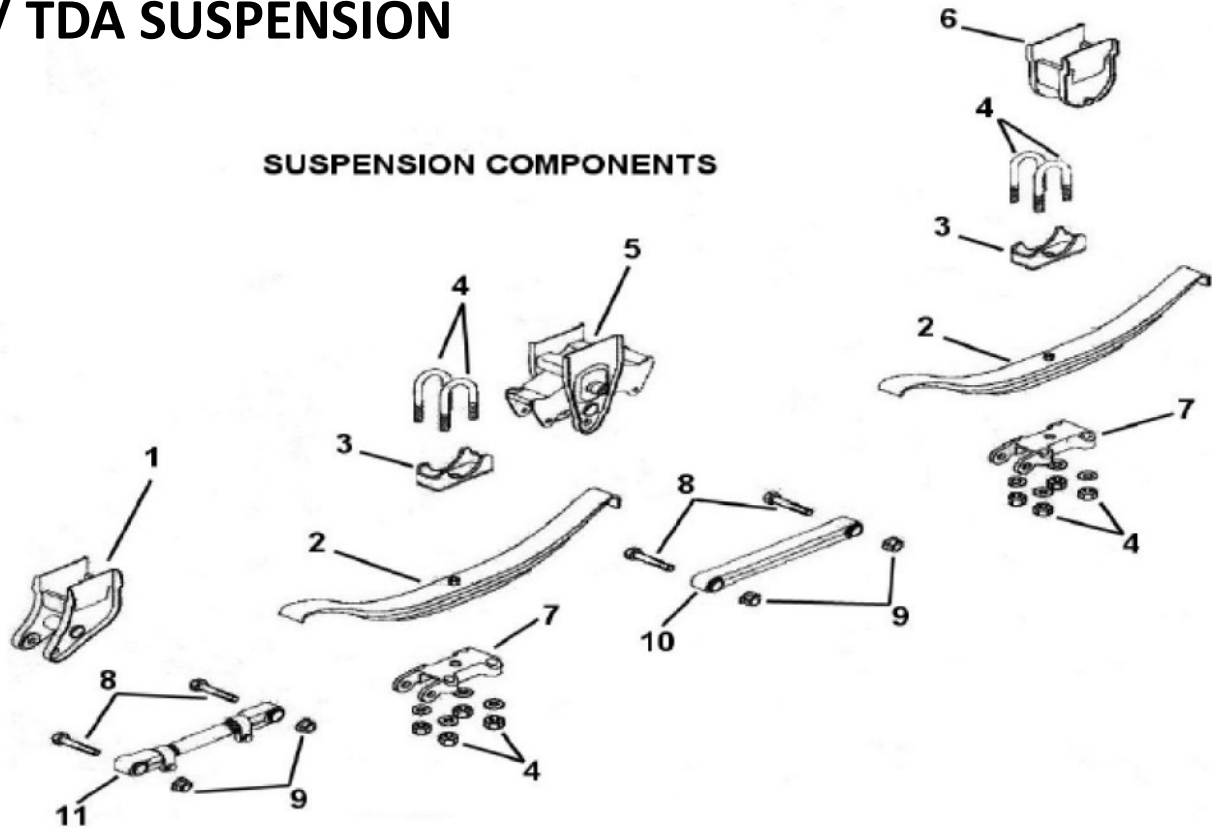
24TDT HUB & DRUM



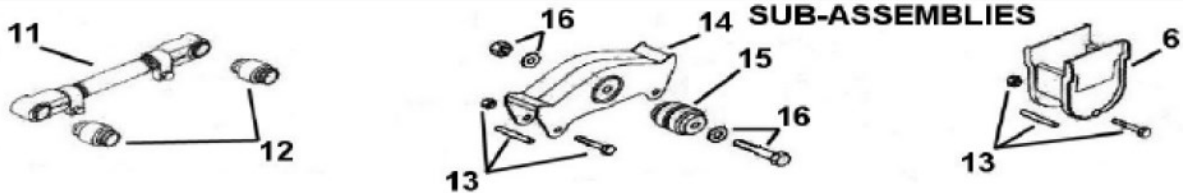
ITEM#	QTY PER TRAILER	DESCRIPTION	PART NUMBER
1	4	HUB OIL SEAL	6010
2	4	INNER BEARING CONE	7503
3	4	INNER BEARING CUP	7504
4	2	COMPLETE ELEC. BRAKE ASSEMBLY, ROAD SIDE	7505
4	2	COMPLETE ELEC. BRAKE ASSEMBLY, CURB SIDE	7506
5	28	BRAKE MOUNTING NUT	5295
6	28	BRAKE MOUNTING BOLT	5297
7	32	DRUM ATTACHING BOLT	7518
8	4	BRAKE DRUM	7507
9	4	HUB, WITH CUPS AND STUDS	7508
10	32	WHEEL STUD	7520
11	4	OUTER BEARING CUP	7509
12	4	OUTER BEARING CONE	7510
13	4	SPINDLE WASHER	5294
14	8	BEARING LOCKNUT	7511
15	4	SPINDLE LOCK WASHER	7512
16	4	HUB OIL CAP ASSEMBLY	7226
17	8	DUAL WHEEL, 16" X 6"	5151
18	4	WHEEL CLAMP RING	5283
19	32	WHEEL NUT	7517

TDT / TDA SUSPENSION

SUSPENSION COMPONENTS



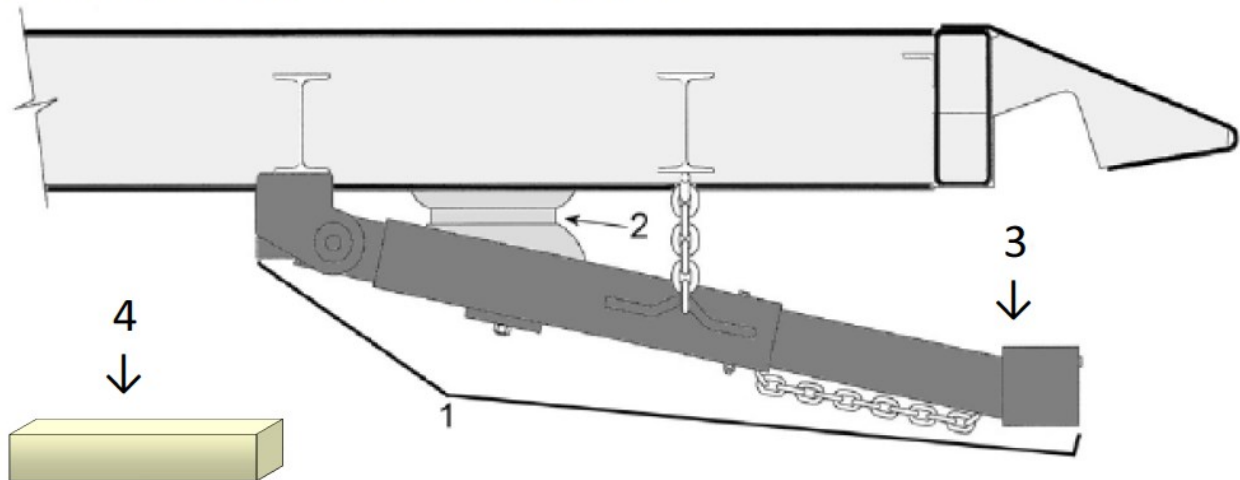
SUB-ASSEMBLIES



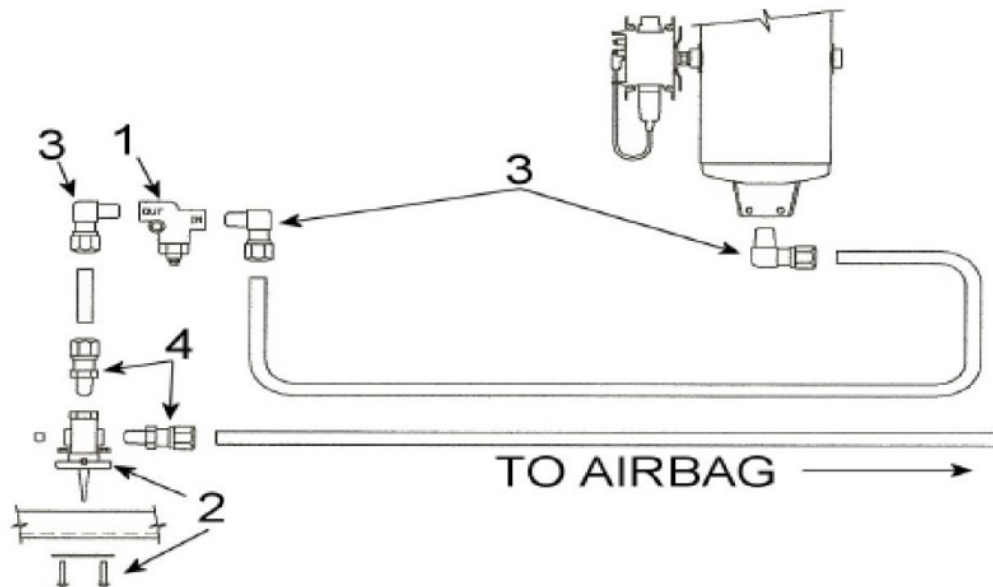
ITEM#	QTY PER TRAILER	DESCRIPTION	PART NUMBER
1	2	FRONT HANGER	5119
2	4	3-LEAF SPRING	5136
3	4	AXLE SEAT	5127
4	8	U-BOLT WITH NUTS AND WASHERS	5129
5	2	CENTER HANGER WITH EQUALIZER	5115
6	2	REAR HANGER	5120
7	4	BOTTOM PLATE	5128
8	8	TORQUE ARM BOLT	5133
9	8	TORQUE ARM NUT	5134
10	2	FIXED TORQUE ARM	5132
11	2	ADJUSTABLE TORQUE ARM	5131
12	8	TORQUE ARM BUSHING	5132-1
13	6	REBOUND BOLT WITH SLEEVE AND NUT	5125-3
14	2	EQUALIZER WITH BUSHING	5125
15	2	EQUALIZER BUSHING	5125-2
16	2	EQUALIZER BOLT KIT	5125-1
	2	HANGER SUPPORT TUBE	5110
	6	HANGER SPACER	5113
		COMPLETE SUSPENSION KIT	5204

INTERSTATE TRAILERS, INC.

UNDER RIDE BUMPER AND PLUMBING



ITEM#	DESCRIPTION	PART NUMBER
1	UNDER RIDE BUMPER, LARGE TILTS	5684*
2	AIR BAG, UNDER RIDE BUMPER	5685
3	REPLACEMENT BUMPER ONLY	5684-1
4	REPLACEMENT BUMPER BLOCK	5684-2



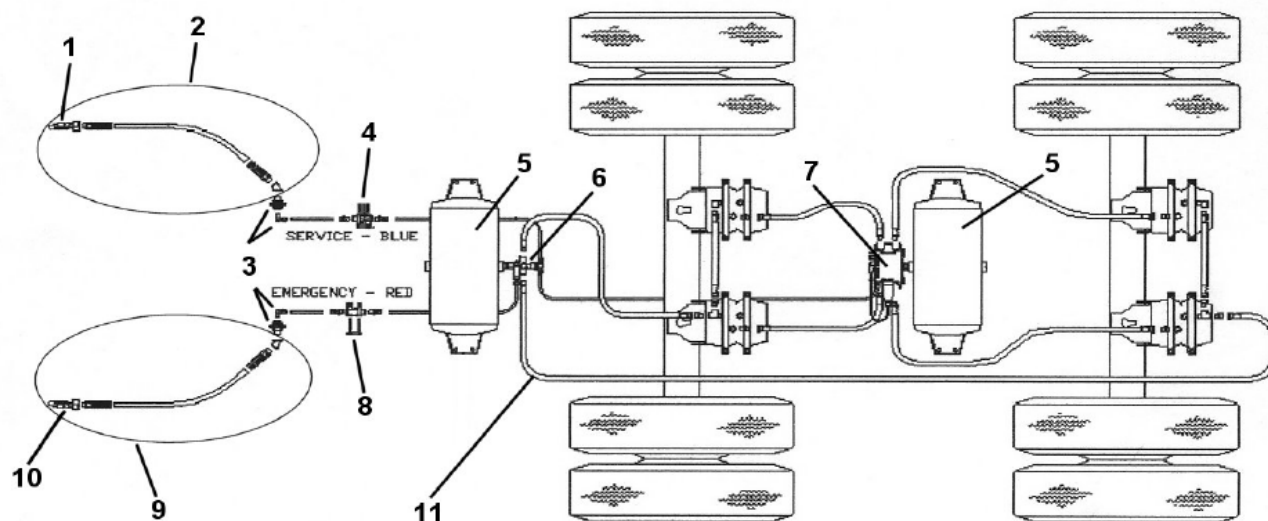
ITEM#	DESCRIPTION	PART NUMBER
1	REGULATOR, AIR BAG	6558-1
2	FLIP SWITCH, AIRBAG	6558
3	FITTING, 3/8 NPT-3/8 COMP 90 DEGREE	PP-200-E90-002
4	FITTING, 1/8 NPT-3/8 COMP STRAIGHT	PP-200-CON-006

*UNDER RIDE BUMPER REQUIRES VIN NUMBER WHEN ORDERING

INTERSTATE

TRAILERS, INC.

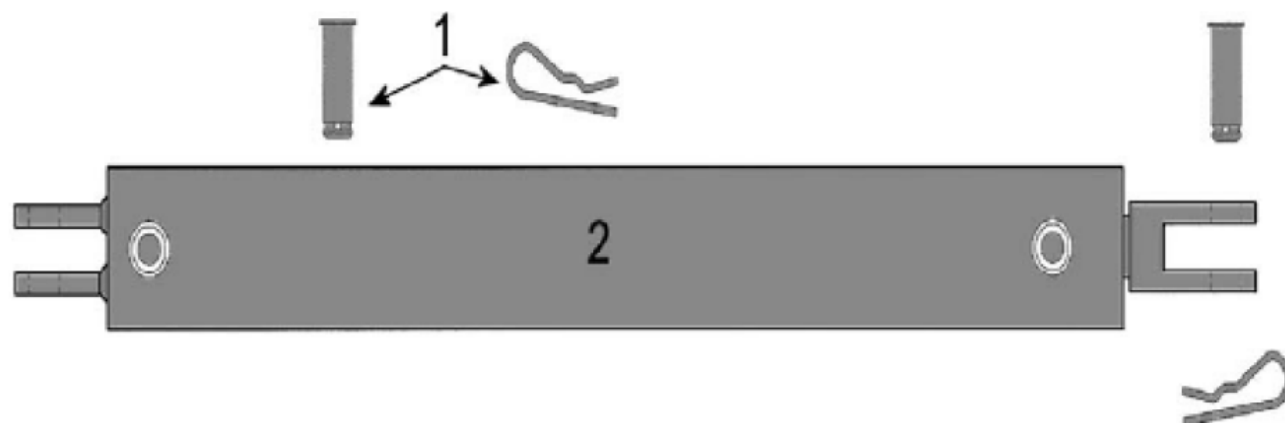
20/24TDA AIR SYSTEM



ITEM#	QTY PER TRAILER	DESCRIPTION	PART NUMBER
1	1	SERVICE GLADHAND	5361
2	1	SERVICE AIR HOSE ASM. W/GLADHAND & FITTINGS	5686
3	2	BULKHEAD FITTING AND ELBOW FITTING	5359
4	1	SERVICE AIR FILTER	5331-1
5	2	AIR TANK	5354
6	1	SPRING BRAKE CONTROL VALVE	5353-1
7	1	ABS VALVE/MODULE ASSEMBLY	5353-2
8	1	EMERGENCY AIR FILTER	5331
9	1	EMERGENCY AIR HOSE ASM. W/GLADHAND & FITTINGS	5687
10	1	EMERGENCY GLADHAND	5360
11		AIR HOSE, VARIOUS SIZES -CALL FACTORY	

INTERSTATE TRAILERS, INC.

CUSHION CYLINDER AND BED



ITEM#	DESCRIPTION	PART NUMBER
1	CLEVIS PIN AND CLIP	5252
2	COMPLETE CYLINDER, INCLUDES 2 EA PINS & CLIPS	5246

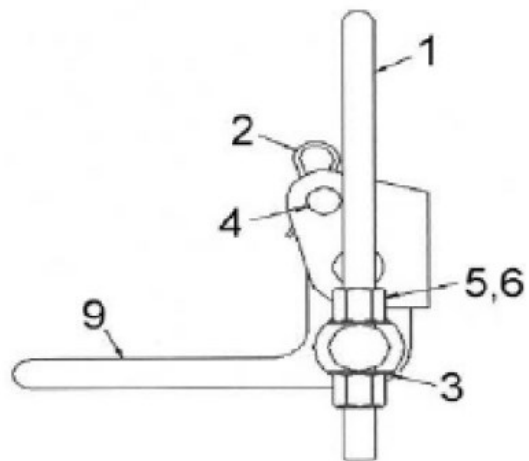
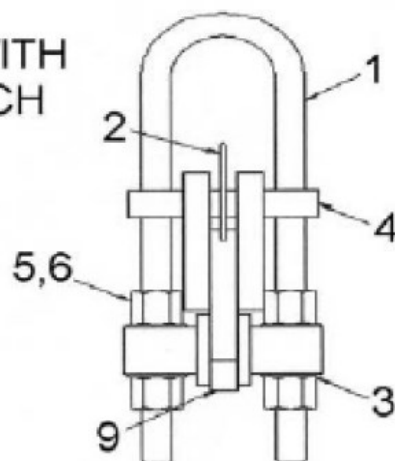


ITEM#	DESCRIPTION	PART NUMBER
1	COMPLETE BED ASSEMBLY *SPECIAL ORDER, CALL FACTORY	6204

INTERSTATE TRAILERS, INC.

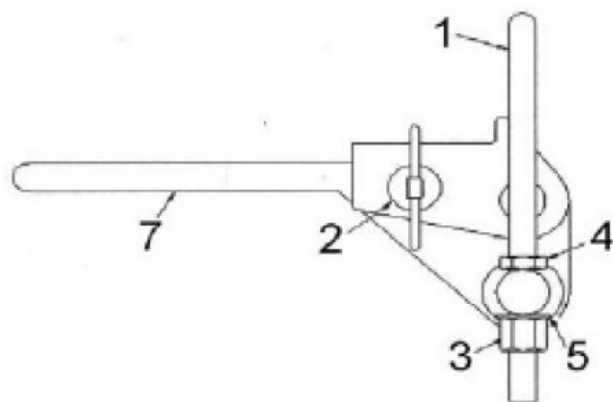
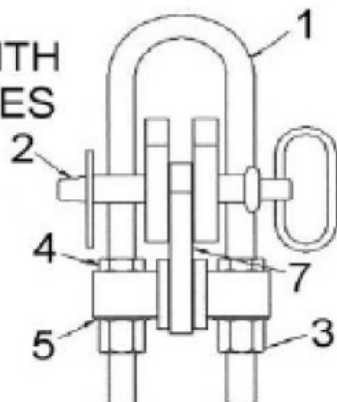
TILT BED LATCH COMPONENTS

TRAILERS WITH SINGLE LATCH



ITEM	DESCRIPTION	PART #
1	16" U Bolt	5257
2	Fab Locking Pin	5255
3	Washer	5256
4	Fab Locking Pin	5255
5	Nut	5366
6	Nut	5366
9	Handle	5370
*COMPLETE LATCH ASSEMBLY		5251

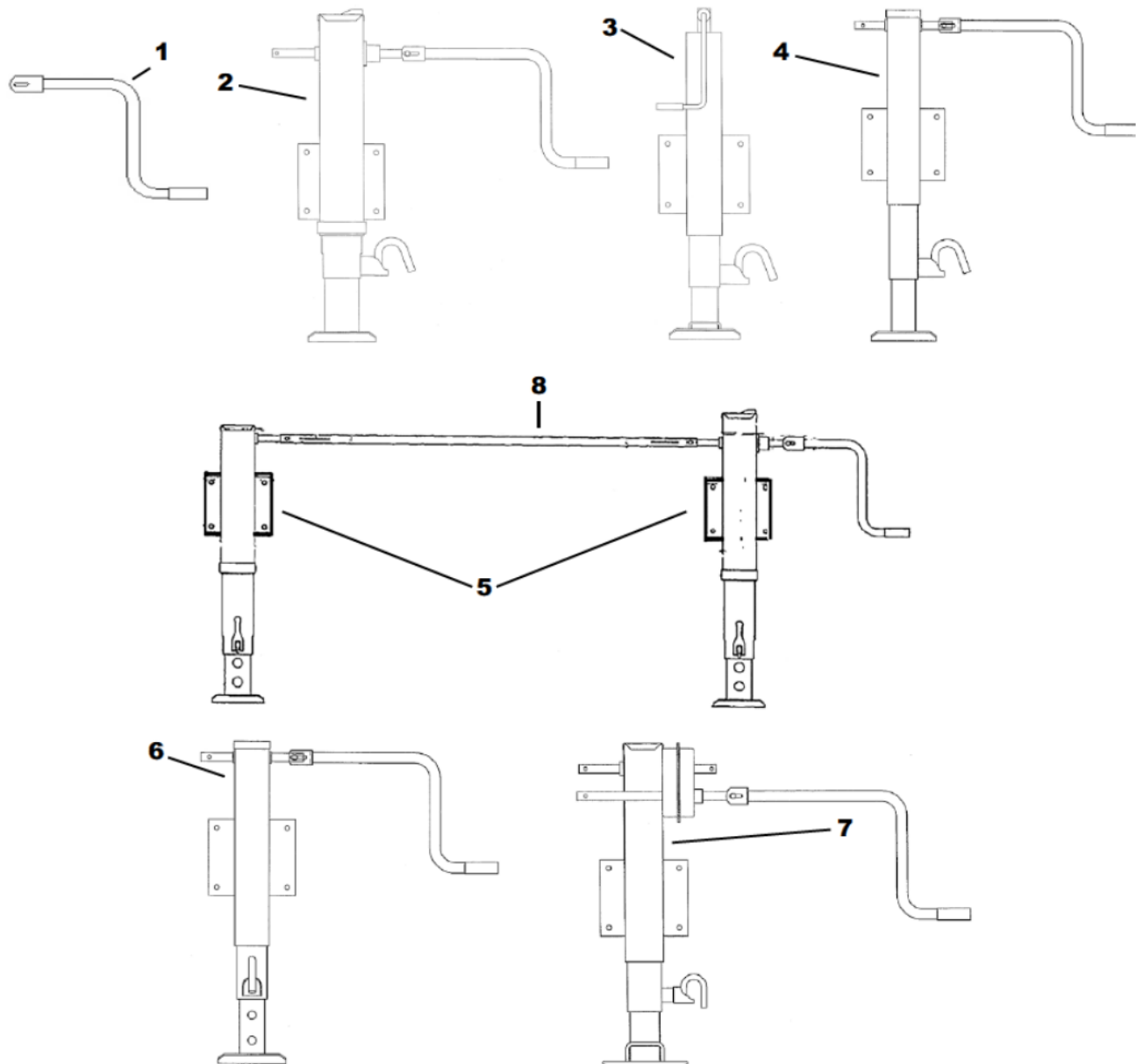
TRAILERS WITH DUAL LATCHES



ITEM	DESCRIPTION	PART #
1	14" U Bolt	5253
2	Hitch Pin	6865
3	Nut	5366
4	Jamb Nut	5256-1
5	Washer	5256
7	Handle	5369
*COMPLETE LATCH ASSEMBLY		5251-1

INTERSTATE TRAILERS, INC.

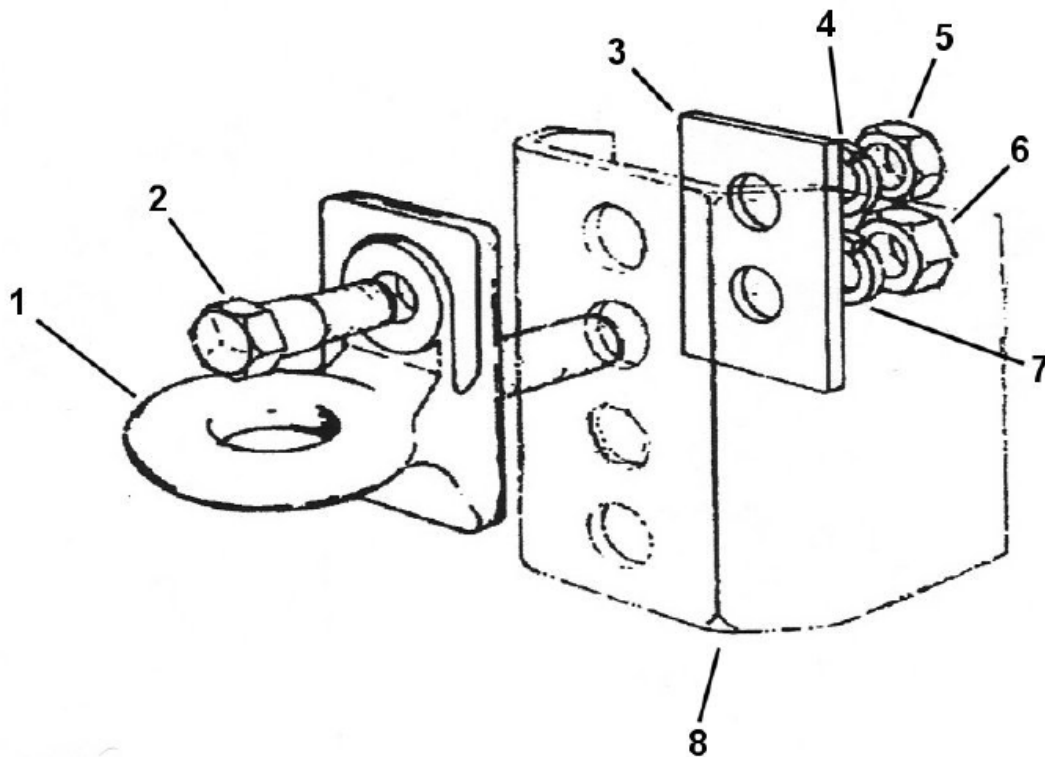
LANDING GEAR



ITEM#	DESCRIPTION	PART NUMBER
1	JACK HANDLE, FITS ALL SIDEWIND JACKS	5648
2	TWO SPEED 25K JACK WITH DROP FOOT	7129
3	10K TOPWIND JACK WITH DROP FOOT	7114
4	12K SIDE WIND JACK WITH DROP FOOT	7130
5	25K TWO SPEED JACK SET INCLUDES BOTH JACKS, CROSS SHAFT, HANDLE, AND HEADBOARD MOUNTS	7125-1
6	12K JACK (FOR SINGLE SPEED DUAL JACK SET)	7125-8
7	25K JACK, 2-SPEED (HOLLAND)	7129-6
8	CROSS SHAFT, FOR DUAL JACK SET	7125-6
5	*GEAR SIDE JACK ONLY*	7129-10
5	*OFFSIDE JACK ONLY *	7129-5

HYDRAULIC & ELECTRIC JACKS AVAILABLE UPON REQUEST

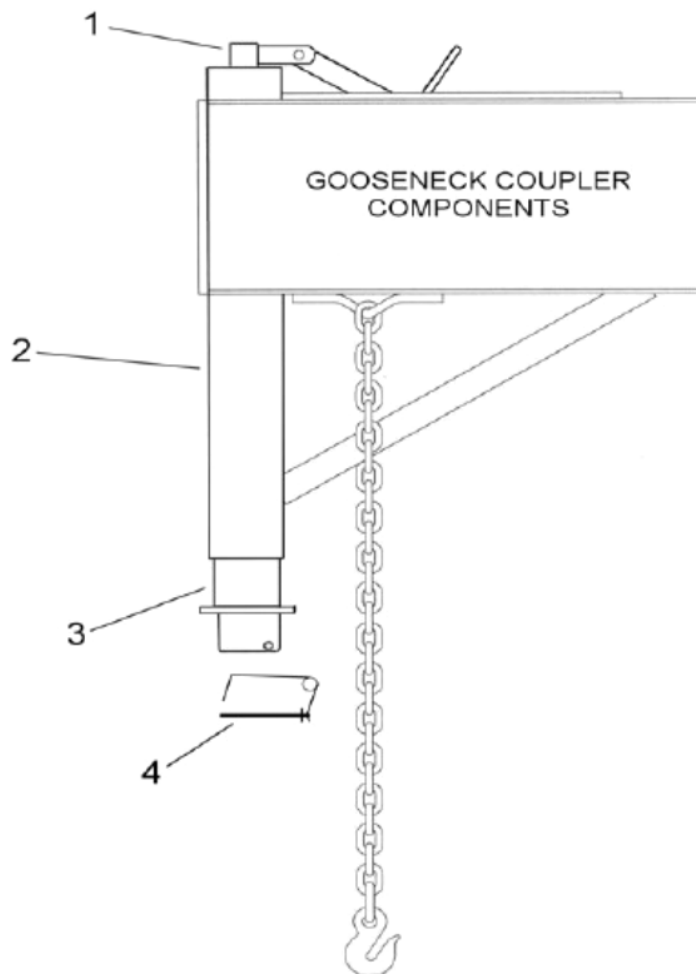
PINTLE HITCH COMPONENTS



ITEM#	DESCRIPTION	PART NUMBER
1	PINTLE HITCH, NO HARDWARE	4727
1	PINTLE HITCH, WITH HARDWARE (2-7)	4790
2	HITCH BOLT	4734
3	HITCH BACKING PLATE	5254
4	1.5" LOCK WASHER	4731
5	1.5" NUT	4730
6	1.75" NUT	4729
7	1.75" LOCK WASHER	4728
8	NOSE PLATE, WITH CHAIN ANCHORS (NOT SHOWN)	6126-3

INTERSTATE TRAILERS, INC.

GOOSENECK HITCH PARTS



OLD STYLE (7124)



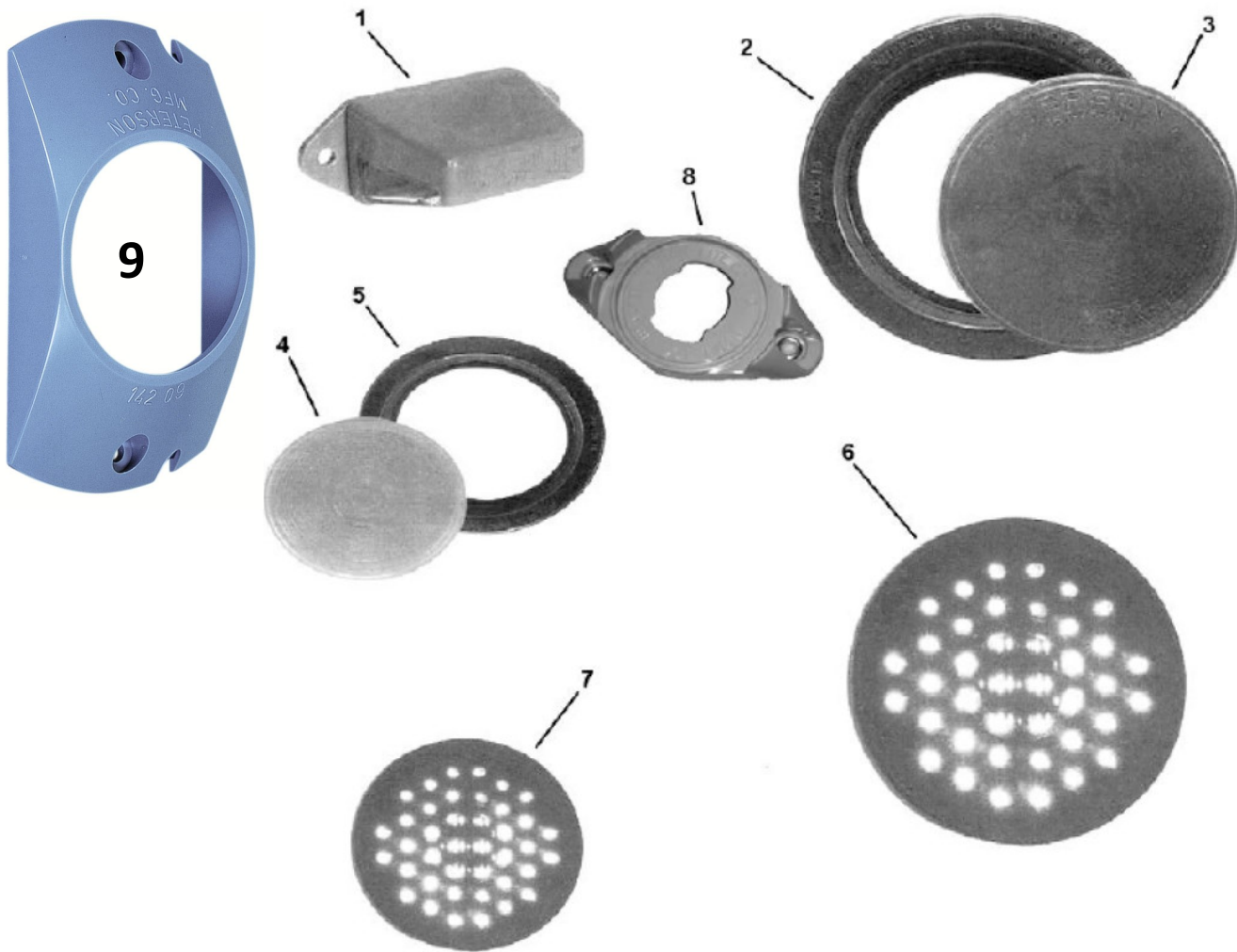
NEW STYLE (7124-0)



ITEM#	DESCRIPTION	PART NUMBER
1	HANDLE, 1" INPUT SHAFT	7140-1
2	HITCH, COMPLETE ASSEMBLY INCLUDES ITEMS 1,3,4	7124
3	INNER LEG, WITH MANUAL COUPLER	7127
4	BAIL PIN, FOR MANUAL COUPLER	7168
	COMPLETE HITCH ASSEMBLY (NEW STYLE)	7124-0

INTERSTATE TRAILERS, INC.

LIGHTING



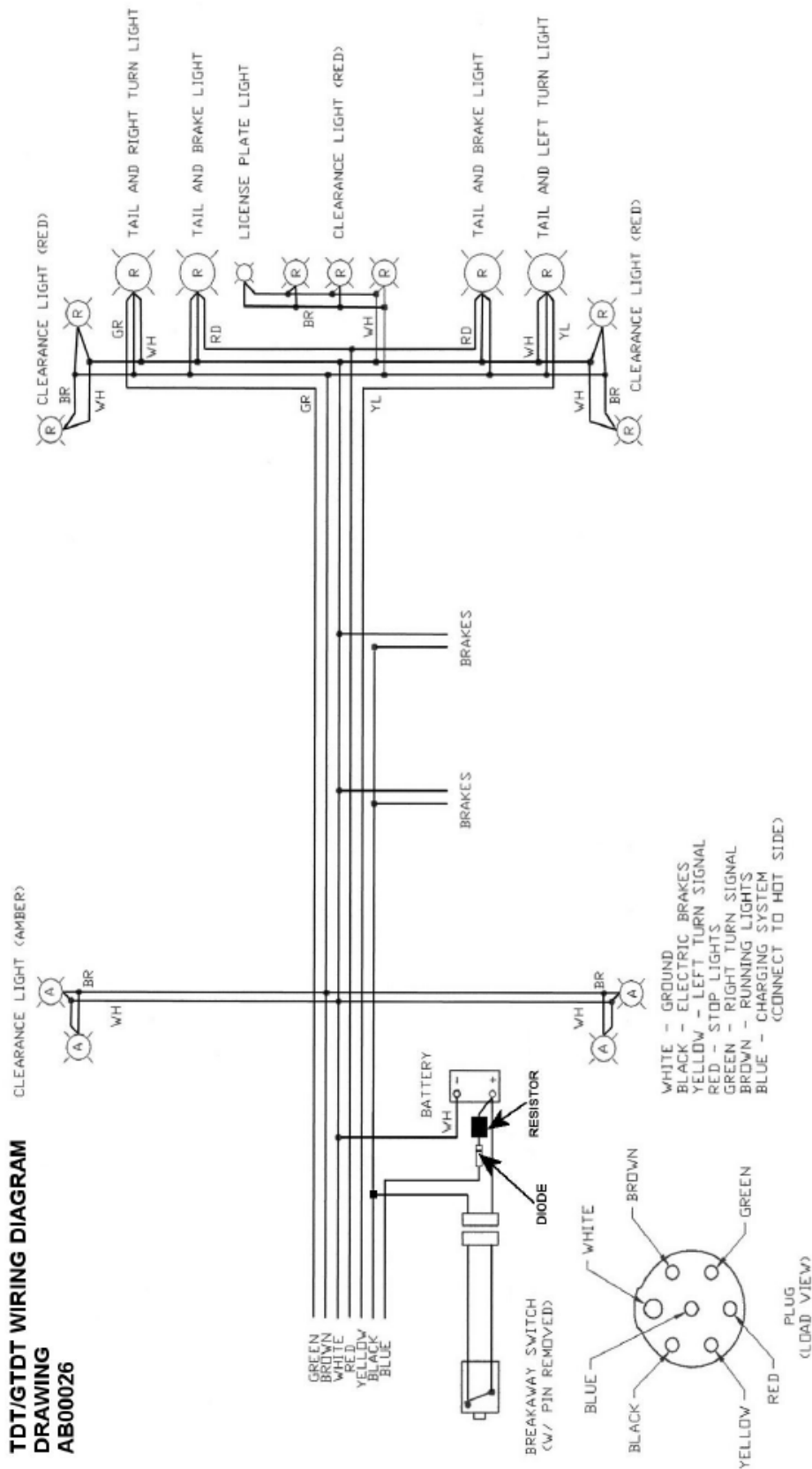
ITEM#	DESCRIPTION	PART NUMBER
1	TAG LIGHT	7074
2	4" TAIL LIGHT MOUNTING GROMMET	7067
3	4" INCANDESCANT TAIL LIGHT	7068
4	2" INCANDESCANT MARKER LIGHT, RED	5170
4	2.5" INCANDESCANT MARKER LIGHT, RED	7070
4	2.5" INCANDESCANT MARKER LIGHT, AMBER	7071
5	2.5" MARKER LIGHT MOUNTING GROMMET	7069
6	4" L.E.D. TAIL LIGHT	7068-2
7	2" L.E.D. MARKER LIGHT, RED	5170-2
7	2.5" LED MARKER LIGHT, RED	7070-2
7	2.5" LED MARKER LIGHT, AMBER	7071-2
8	ABS LAMP MOUNTING BRACKET	7083
8	ABS BRACKET AND LIGHT COMBO	7083-1
9	BRANCH DEFLECTOR BRACKET	7080
	BRANCH DEFLECTOR W/GROMMET & LED LIGHT	7080-1

INTERSTATE

TRAILERS, INC.

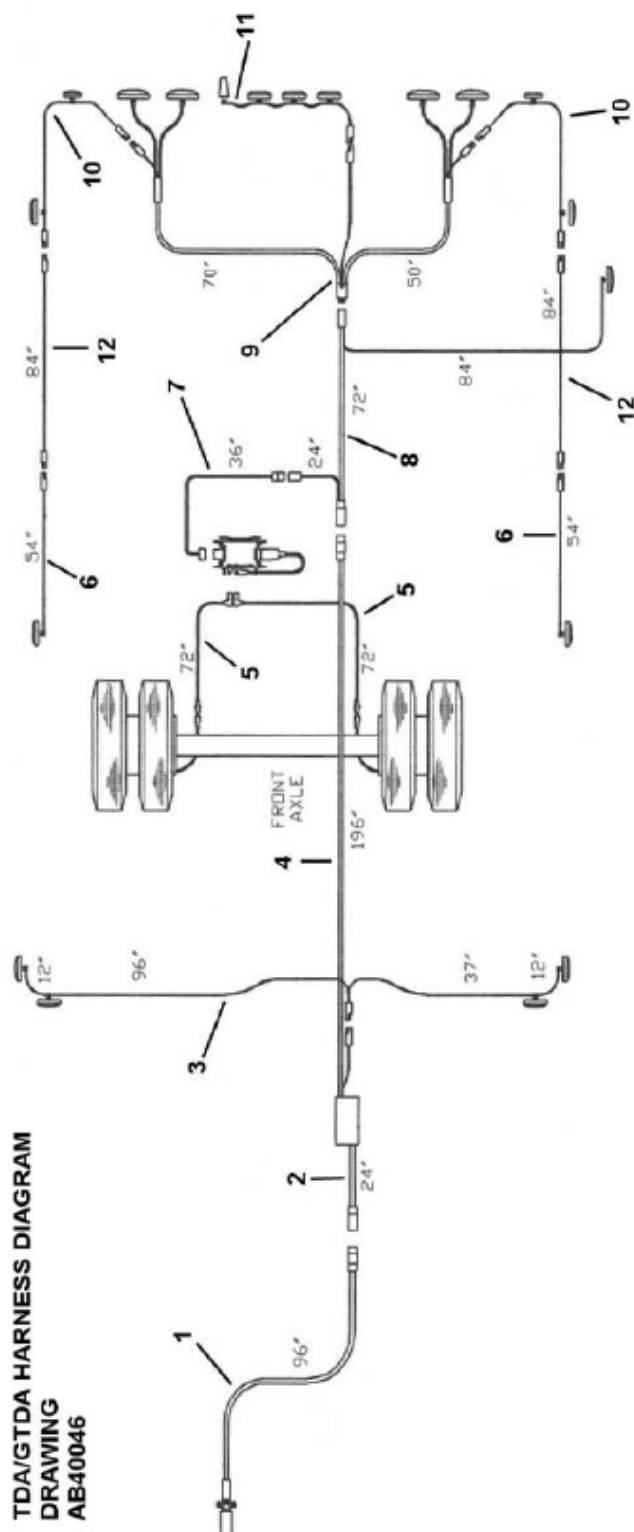
TDT WIRING DIAGRAM

TDT/GTDT WIRING DIAGRAM
DRAWING
AB00026



TDA/GTDA HARNESS DIAGRAM

**TDA/GTDA HARNESS DIAGRAM
DRAWING
AB40046**



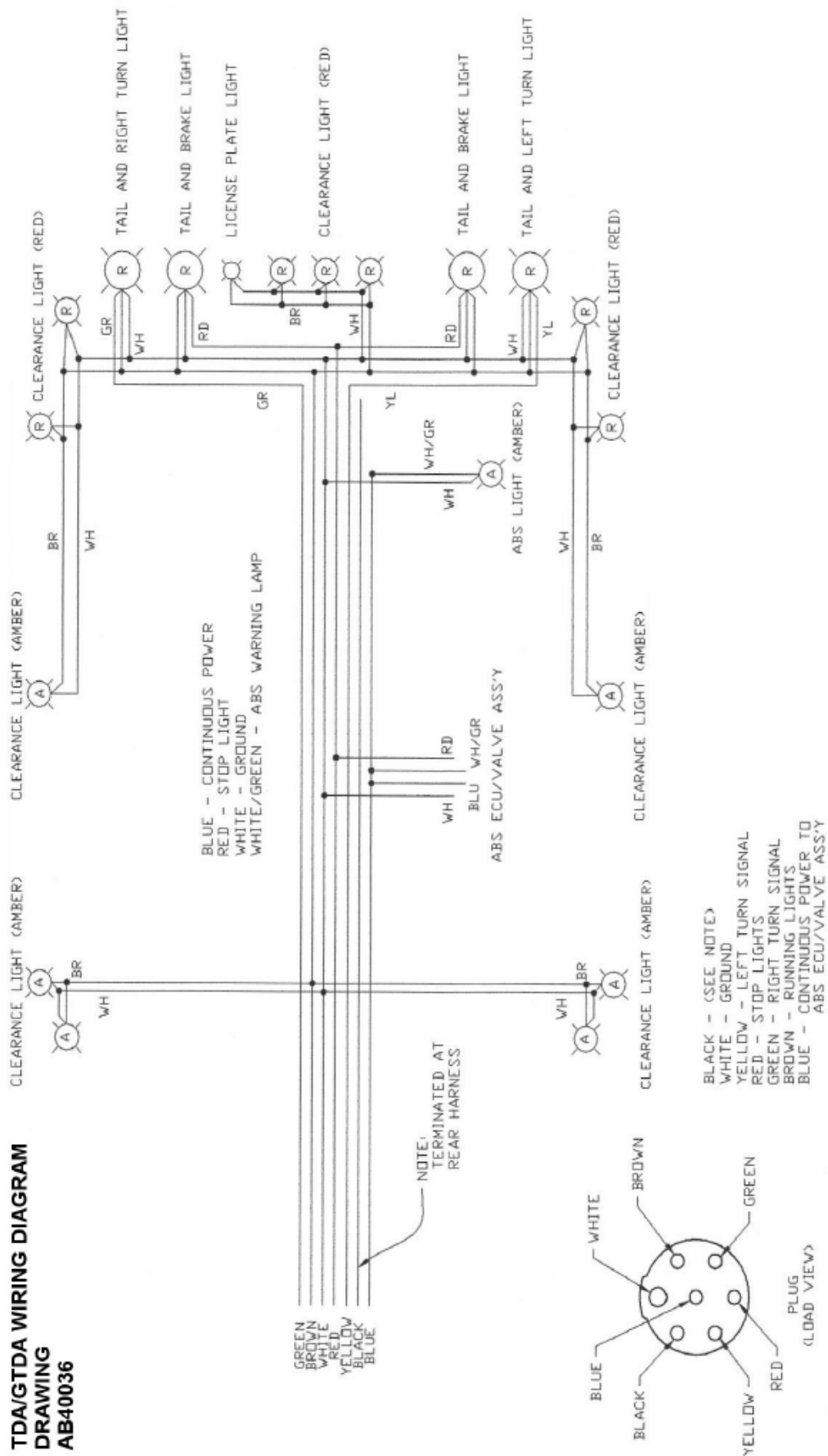
ITEM#	QTY PER TRAILER	DESCRIPTION	PART NUMBER
1	1	NOSE HARNESS 7-WAY STANDARD	102-2
1	1	NOSE HARNESS 6-WAY OPTIONAL	102-4
2	1	JUNCTION BOX LEAD OUT HARNESS	5993-1
3	1	FRONT MARKER LIGHT HARNESS	108
4	1	MAIN HARNESS, WITH JUNCTION BOX	0101-3
5	2	72" ABS SENSOR EXTENSION HARNESS	0100-2
6	2	CENTER MARKER HARNESS	145
7	1	ABS ECU POWER WIRE	0100-5
8	1	ABS MAIN HARNESS	0100-1
9	1	REAR HARNESS (INCLUDES 15,16,17)	0104-1
10	2	CORNER MARKER HARNESS	0122-2
11	1	REAR CENTER MARKER HARNESS	126-2
12	2	MARKER HARNESS EXTENSION	146

INTERSTATE

TRAILERS, INC.

TDA/GTDA WIRING DIAGRAM

TDA/GTDA WIRING DIAGRAM
DRAWING
AB40036



INTERSTATE

TRAILERS, INC.

DECAL KIT

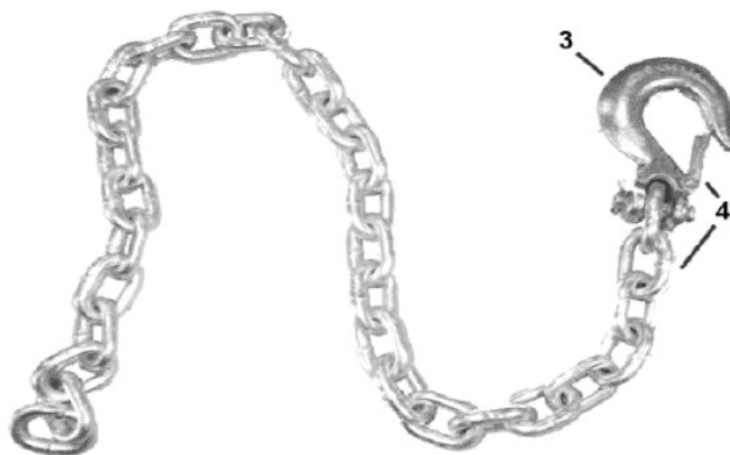
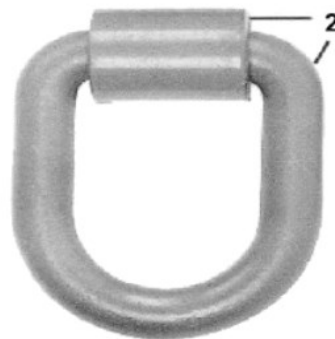


ITEM#	DESCRIPTION	PART NUMBER
1	DECAL KIT, ALL 20/24 TDT'S AND TDA'S MUST SPECIFY TRAILER MODEL AND COLOR WHEN ORDERING.	6095-1

INTERSTATE GRAY PAINT CODE: ANSI 49 GRAY

INTERSTATE TRAILERS, INC.

MISCELLANEOUS PARTS



ITEM# DESCRIPTION

PART
NUMBER

1	TIRE, 245/75R16 -10PLY (18-20DT/DTA)	6148-1
1	TIRE, 235/85R16 -14PLY (24DT/DTA)	6148-4
1	TIRE, 235/80R16 -10PLY STANDARD ON ALL DT/DTA'S	6148-7
1	DUAL WHEEL, 16 X 6"	5151
1	WHEEL AND TIRE ASSEMBLY 245/75R16-10PLY	6148-2
1	WHEEL AND TIRE ASSEMBLY 235/85R16-14PLY	6148-5
1	WHEEL AND TIRE ASSEMBLY 235/80R16-10PLY	6148-6
2	D-RING AND CLIP	4792
3	3/8" SAFETY HOOK WITH LATCH	6851
4	3/8" SAFETY CHAIN WITH HOOK	4732
	DUAL WHEEL, 16.5" (PRE 1998)	7034
	16" STAINLESS WHEEL SIMULATORS (SET OF 4)	7034-3

INTERSTATE TRAILERS, INC.

Hutch 9700 Alignment Procedure

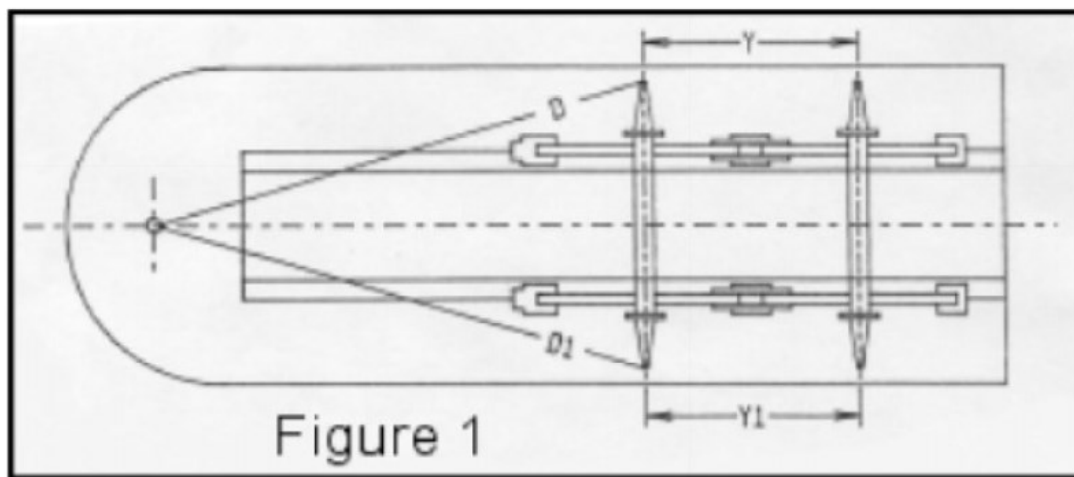
Your Hutch suspension is designed to require a minimum of service. The key to a successful service life, however, is a thorough inspection of the suspension after a short break-in period to make certain all nuts and bolts are properly torqued, and a regular periodic inspection thereafter. This is essential to assure continuous trouble free operation. The frequency of your preventative maintenance inspections depends upon your operation, such as: the terrain your trailers operate over, the mileage per month, etc.

Alignment

Before attempting alignment, make sure the trailer is not loaded. Be sure the suspension has not been placed in a "blind" by being jack-knifed into a bay or having gone through any other unusual maneuver. The suspension must be free and loose in order to obtain a true alignment.

To align, measure the distance from the king-pin / pintle eye to the centerline of the spindle on the front axle. If the dimensions "D" and "D1" (figure 1, below) are not the same, turn the adjustable torque arm screw until the two dimensions are the same. Next, align any succeeding axle from the front axle. Move the adjustable torque arm until "Y" and "Y1" (figure 1, below) are the same. When all axles are properly aligned, make sure all clamp bolts on adjustable torque arms are tightened to 85 foot pounds.

It is to be understood that all alignments are to be performed on smooth, level and flat surfaces with the trailer empty. True readings cannot be obtained if alignment is performed on loaded trailers in the street or on rough terrain.



Note to dealers:

All Interstate trailers come from the factory pre-aligned and should not require any adjustments prior to customer delivery.

INTERSTATE TRAILERS, INC. **ABS DIAGNOSTICS**

Blink Code Diagnostics

The Meritor WABCO Enhanced Easy-Stop Trailer ABS ECU detects any electrical fault in the trailer ABS. Each of the faults has a code. When a fault occurs, the ECU stores the code for that fault in the memory.

There are two kinds of faults: active and stored. Active faults are those currently existing in the system, such as a broken wire. Stored faults are faults that have occurred but do not presently exist. Active faults can be cleared only after repairs are completed. Stored faults can only be diagnosed with TOOLBOX Software or the Pro-Link 9000.

The ECU signals a malfunction by lighting both the internal and external indicator lamp when a fault exists. The external ABS indicator lamp is usually mounted on the left rear of the trailer, near the rear wheels.

There are two ways to obtain blink codes:

- Ignition Power Activation (recommended method)
- Diagnostic Tool

Although the ECU can store multiple faults in its memory, it only displays one blink code at a time. This is why it is important to recheck the blink codes after repairing a fault. If there are additional codes in the memory, they only blink after you have repaired the first fault.

Stored faults, clear all and end of line test modes are available with the TOOLBOX Software or the Pro-Link 9000.

Ignition Power Activation

Ignition Power Activation is the process of using the vehicle's ignition switch (or interrupting the power on the blue wire by some other means) to display blink codes on the trailer ABS indicator lamp located on the side of the trailer. This method is for constant power vehicles only.

To obtain blink codes using ignition power activation, perform the following procedure:

1. Turn the ignition switch on for no longer than 5 seconds. The ABS indicator lamp will be on.
2. Turn the ignition switch off. The ABS indicator lamp will go out.

3. Turn the ignition switch on. The ABS indicator lamp will then come on, then go out.
4. The blink code will be displayed three times by the ABS indicator lamp on the trailer.

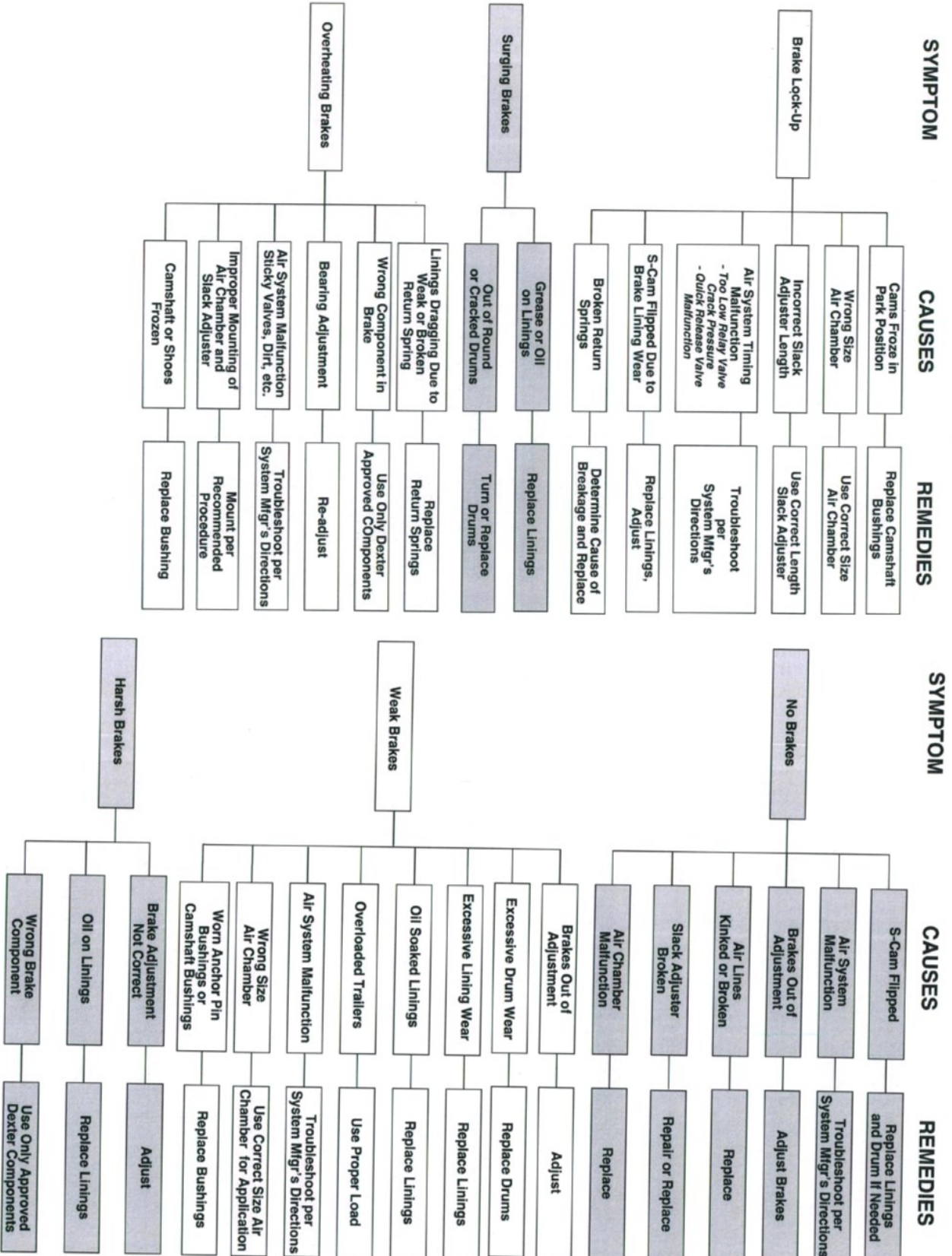
NOTE: For ignition power activation, power is provided by the Ignition switch.

BLINK CODES		
Blink Code	Problem Area	Action
3	Sensor BU1	Determine sensor location. Check sensor installation. Make necessary repairs.
4	Sensor YE1	Determine sensor location. Check sensor installation. Make necessary repairs.
5	Sensor BU2	Determine sensor location. Check sensor installation. Make necessary repairs.
6	Sensor YE2	Determine sensor location. Check sensor installation. Make necessary repairs.
7	External ABS modulator valve	Verify proper electrical installation. Check power supply. Make necessary corrections.
9	Internal modulator failure, inlet valve #2	Verify proper installation. If code continues, contact Meritor WABCO for assistance.
10	Internal modulator failure, inlet valve #1	Verify proper installation. If code continues, contact Meritor WABCO for assistance.
11	Internal modulator failure, outlet valve	Verify proper installation. If code continues, contact Meritor WABCO for assistance.
14	Power Supply	Verify proper electrical installation. Check power supply. Make necessary corrections.
15	ECU Failure	Verify proper installation. If code continues, contact Meritor WABCO for assistance.
16	SAE J1708 Failure	Internal failure, contact Meritor WABCO.
17	SAE J2497 (PLC) Failure	Internal failure, contact Meritor WABCO.
18	Generic I/O Failure	Verify proper electrical installation. Check power supply. Make necessary corrections.

For diagnostic and trouble-shooting assistance, call Meritor WABCO at 1-800-535-5560

Braking Systems - Air

Troubleshooting



Braking Systems - Electric

Troubleshooting

SYMPTOM	CAUSES	REMEDIES	SYMPTOM	CAUSES	REMEDIES
No Brakes	Open Circuits	Find & Correct	Brakes Pull to One Side	Wrong Magnet Lead Wire Color	Correct
	Severe Underadjustment	Adjust Brakes		Incorrect Adjustment	Adjust
	Faulty Controller	Test & Correct		Grease or Oil on Linings or Magnets	Clean or Replace
	Short Circuits	Find & Correct		Broken Wires	Find & Repair
	Grease or Oil on Magnets or Linings	Clean or Replace		Bad Connections	Find & Repair
	Corroded Connections	Clean & Correct Cause of Corrosion		Underadjustment	Adjust
	Worn Linings or Magnets	Replace		Improper Synchronization	Correct
Weak Brakes	Scored or Grooved Brake Drums	Machine or Replace	Harsh Brakes	Improper Controller	Change
	Improper Synchronization	Correct		Faulty Controller	Test & Correct
	Underadjustment	Adjust Brakes		Underadjustment	Adjust
	Glazed Linings	Reburnish or Replace		Lack of Lubrication	Lubricate
	Overloaded Trailer	Correct		Broken Brake Components	Replace Component
	Underadjustment	Adjust		Incorrect Brake Components	Correct
	Improper Synchronization	Correct		Grease or Oil on Linings or Magnet	Clean or Replace
Locking Brakes	Faulty Controller	Test & Correct	Surging Brakes	Out-of-Round or Cracked Brake Drums	Machine or Replace
	Loose, Bent or Broken Brake Components	Replace Components		Faulty Controller	Test & Correct
	Out-of-Round Brake Drums	Machine or Replace		Overadjustment	Readjust
	Insufficient Wheel Load	Adjust System Resistor and Synchronize		Out-of-Round Brake Drums	Machine or Replace
	Faulty Controller	Test & Correct		Incorrect Brake Components	Replace
	Broken Wires	Repair or Replace		Loose, Bent or Broken Brake Components	Replace
	Loose Connections	Find & Repair	Dragging Brakes	Faulty Breakaway Switch	Repair or Replace
Intermittent Brakes	Faulty Ground	Find & Repair		Loose Wheel Bearing Adjustment	Adjust
				Bent Spindle	Replace Axle

INTERSTATE TRAILERS, INC.

MAINTENANCE SCHEDULE

- TIRES** - CHECK DAILY - MAINTAIN 235/85R16 AND 245/75R16 TIRES @ 80 PSI COLD.
- WHEEL LUGS** - CHECK WEEKLY - LIGHTLY GREASE STUDS TORQUE TO 200 FL. LBS.
- WHEEL BEARINGS** - CHECK OIL LEVEL DAILY. USE SAE 80W-90 API-GL-5 OIL
- BRAKES** - SHOULD BE CHECKED FOR ADJUSTMENT MONTHLY. BRAKE LININGS SHOULD BE REPLACED WHEN LININGS ARE WORN TO RIVET HEADS (AIR) OR BACKING PLATE (ELECTRIC). DO NOT WEAR LININGS PAST RIVET HEADS OR INTO BACKING PLATE.
- MAGNETS** - CHECK AT ANY INDICATION OF BRAKE PROBLEMS, AT BRAKE REPLACEMENT BEARING INSPECTION, OR ANY TIME A HUB IS PULLED. MAGNETS SHOULD BE REPLACED IF BARE WIRE IS SHOWING AT WEAR SURFACE, SURFACE OF MAGNET IS GOUGED OR SCORED, OR IF MAGNET IS WORN UNEVENLY
- SUSPENSION** - THE HUTCHENS 9700 SUSPENSION DOES NOT REQUIRE LUBRICATION. THE SUSPENSION SHOULD BE INSPECTED FOR WEAR PERIODICALLY AND ANY WORN PARTS SHOULD BE REPLACED IMMEDIATELY.
- TOW RING** - INSPECT FOR TIGHTNESS DAILY BEFORE USE. RING PLATE MUST BE TIGHT AGAINST NOSE PLATE TO PREVENT NOSE PLATE DEFORMATION. RING SHOULD BE INSPECTED DAILY AND REPLACED IF RING SHOWS EXCESSIVE WEAR. TO INSTALL RING ON TRAILER DETERMINE PROPER HEIGHT ACCORDING TO THE TOW VEHICLE WHICH WILL BE USED. INSTALL TOW RING WITH BOLT IN THE LOWER POSITION WHENEVER POSSIBLE. TIGHTEN NUTS ON BOLT AND STUD UNTIL BOTH LOCK WASHER ARE FULLY COMPRESSED. DO NOT USE WITH A TOW HITCH THAT IS EXCESSIVELY LOOSE OR ONE THAT BINDS WHEN TURNING.
- LIGHTS** - CHECK PLUG FOR CONDITION AND TIGHTNESS OF TERMINALS. INSPECT ALL LIGHTS FOR PROPER OPERATION DAILY AND REPLACE BULBS AS NEEDED.
- JACK(S)** - CHECK JACK DAILY FOR ANY PHYSICAL DAMAGE OR LACK OF OPERATION DUE TO RUST OR CORROSION. REPLACE IF SEVERELY RUSTED OR DAMAGED. CHECK MOUNTING BOLTS FOR TIGHTNESS AND BE SURE LOCKING HARDWARE IS USED.

WARNINGS

- *WARNING*** - BE SURE TRAILER IS CONNECTED TO TOW VEHICLE WHEN LOADING AND UNLOADING MACHINERY. LOCK TRUCK BRAKES BEFORE LOADING AND UNLOADING
- *WARNING*** - CHECK TIRE INFLATION DAILY
- *WARNING*** - CHECK WHEEL LUGS WEEKLY
- *WARNING*** - USE CAUTION WHEN RAISING OR LOWERING REAR RAMPS.
DO NOT PLACE HANDS OR FEET UNDER RAMPS WHEN RAISING OR LOWERING!
- *WARNING*** - TRAILER SHOULD BE LEVEL WHEN FULLY LOADED. ADJUST HITCH TO MAKE TRAILER LEVEL WHEN LOADED.

HUTCHENS RECOMMENDS THAT ALL NUTS AND BOLTS BE CHECKED TO INSURE THAT THE RECOMMENDED TORQUE VALUES ARE BEING MAINTAINED AFTER AN INITIAL BREAK IN PERIOD (APPROXIMATELY 1000 MILES) AND AT LEAST EVERY 4 MONTHS PERIODICALLY THEREAFTER.



Trailer Operations Check List

Proper Loading Procedures:

1. Ensure that tow vehicle and trailer are on level ground.
2. Engage parking brake on tow vehicle. Place chock blocks in front of and behind trailer tires.
3. Check to see that hitch is properly secured to tow vehicle.
4. Raise landing gear and secure in travel position to avoid damage during loading.
5. Clear trailer deck of all debris and obstacles before loading.
6. Fold down loading ramps making sure that all personnel are clear of a dropping ramp or any pinch points. Ramps are extremely heavy and caution should be exercised at all times while raising and lowering.
7. Adjust loading ramps so that center of ramps line up with track centers of equipment being loaded.
8. Clear ramps of any debris such as mud, ice or snow that could cause loss of traction while loading.
9. Load equipment and position so that load is properly balanced both front to back and side to side. An improperly balanced load may cause abnormal tire wear, suspension damage or dangerous towing characteristics such as fishtailing.
10. Secure load per D.O.T. Federal Motor Carrier Safety Regulations 392.9, 393.100 and 393.102. If you have any questions, contact your local law enforcement or D.O.T. before towing.
11. Raise and secure loading ramps into travel position using the same precautions outlined in step 6 above.
12. Remove all chock blocks and store properly.
13. Make a final visual inspection of the tow vehicle, trailer and load for any abnormalities.

***** The above steps are to provide you with a basic guideline for safely loading your trailer. Common sense and extreme caution should always be exercised while applying these steps.

Pre-Trip Inspection:

1. Check and correct air pressure on all tires of the tow vehicle and trailer.
2. Make sure the wheel lug nuts/bolts on the trailer are tightened to the correct torque specifications. Failure to do so may result in wheel damage.

Page 2 of 2 – Trailer Operations Check List

3. Be sure the hitch, coupler, draw bar, and other equipment that connect the trailer and the tow vehicle are properly secured and adjusted. Trailer should run level when loaded.
4. Check that the wiring is properly connected - not touching the road, but loose enough to make turns without disconnecting or damaging the wires.
5. Make sure all running lights, brake lights, turn signals, and hazard lights are working.
6. Attach safety chains to tow vehicle, cross them if possible. Chains should be loose enough as not to bind while turning.
7. Verify that the brakes on the tow vehicle and trailer are operating correctly. Air lines should be secured in a manner which prevents chafing and pinching during travel.
8. Be sure the trailer jack, tongue support, and any attached stabilizers are raised and locked in place.
9. Check load distribution to make sure the tow vehicle and trailer are properly balanced front to back and side to side.
10. Inspect D-rings and clips before use - replace if cracked, worn, or deformed.
11. Check to ensure that all loads have been secured per D.O.T. Federal Motor Carrier Safety Regulations 392.9, 393.100 and 393.102. If you have any questions, contact your local law enforcement or D.O.T. before towing. **
12. While in transit, periodically stop to check load to ensure that securement devices such as chains, binders and straps are tight and load has not shifted.

** Requirements for securing loads differ from state to state. Please familiarize yourself with all state and local regulations before transporting any loads.

Weekly Inspections:

1. Inspect tow hitch for excessive wear. Replace when needed.
2. Check for proper tow hitch to noseplate connection. Tighten as needed.
3. Inspect wheels for cracks or deformities. Replace if needed.
4. Inspect suspension components for excessive wear, cracks or deformities. Replace or repair as needed.
5. Inspect trailer frame for cracks and deformities. Repair as needed.
6. Check tires for excessive or unusual wear. Unusual wear may indicate a suspension alignment or tire inflation problem. Repair or replace as needed.
7. Inspect decking for broken, rotted or missing boards. Replace as needed.

**** Information provided is a basic guideline for safe trailer operation and in no way supersedes Federal, State or Local regulations.

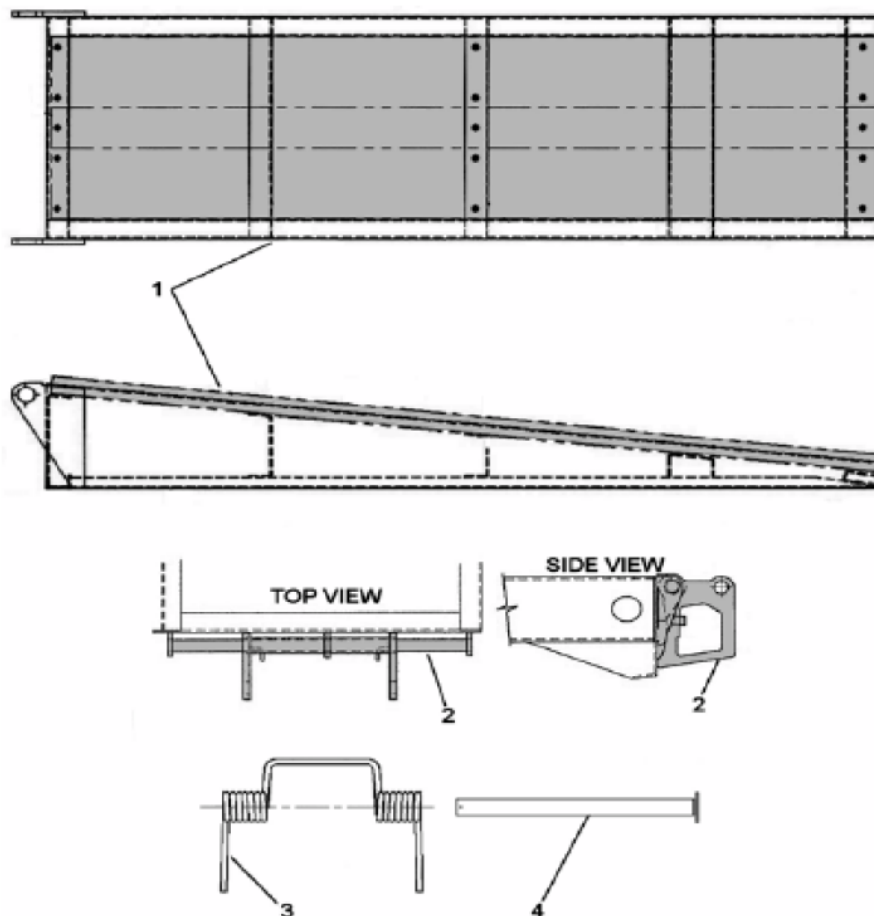
Interstate Trailers, Inc. (800) 433-5384

www.interstatetrailers.com

HUTCHENS RECOMMENDS THAT ALL NUTS AND BOLTS BE CHECKED TO INSURE THAT THE RECOMMENDED TORQUE VALUES ARE BEING MAINTAINED AFTER AN INITIAL BREAK IN PERIOD (APPROXIMATELY 1000 MILES) AND AT LEAST EVERY 4 MONTHS PERIODICALLY THEREAFTER.

INTERSTATE TRAILERS, INC.

APC RAMPS AND LINKAGE



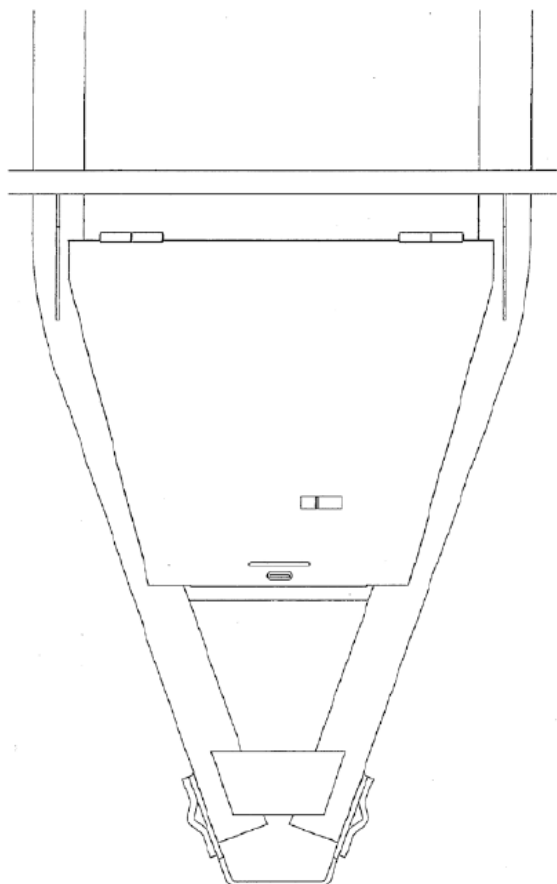
ITEM#	DESCRIPTION	PART NUMBER
1	APC RAMP (SHADED AREA IS WOOD DECKING)	8145
2	RAMP LINKAGE, APC (SHADED AREA)	4896
3	RAMP ASSIST SPRING, TWO COIL	4639
4	RAMP PIVOT PIN, APC	4640-10
	HEAVY DUTY APC RAMP (REINFORCED)	8145-2
	ALUMINUM APC RAMP SET	8145-3

*THIS BREAKDOWN IS INTENDED TO PROVIDE GENERAL INFORMATION FOR THE RAMPS AND LINKAGES FOR STANDARD APC TRAILERS.

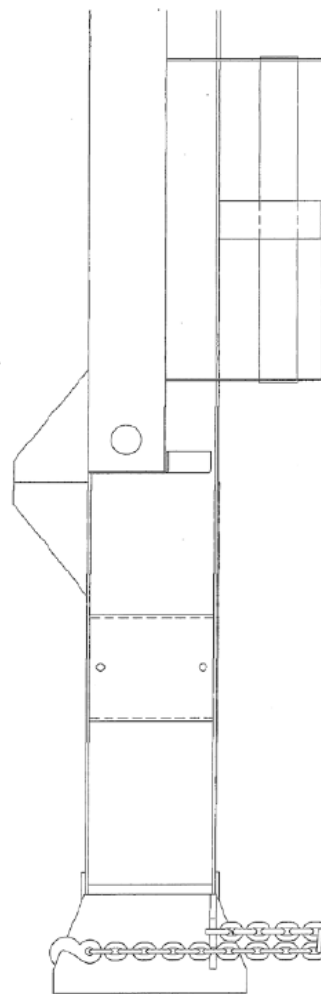
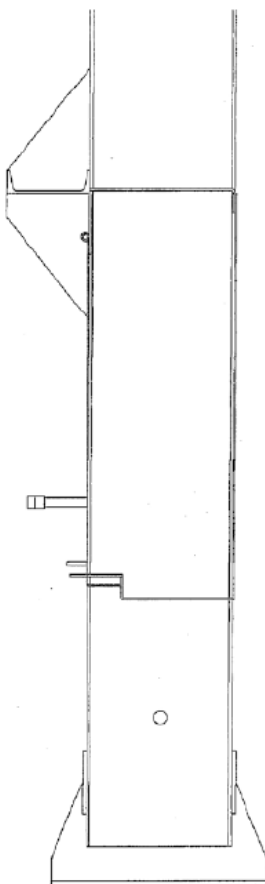
YOUR TRAILER MAY DIFFER FROM THESE DRAWINGS, IF SO PLEASE CONTACT FACTORY WITH YOUR VIN NUMBER FOR UNIT SPECIFIC INFORMATION.

INTERSTATE TRAILERS, INC.

TOOL BOX LID



UPRIGHT TIRE CARRIER
UNDER MOUNT TIRE CARRIER



TOOL BOX LIDS AVAILABLE, VIN# IS NEEDED TO ORDER

UPRIGHT TIRE CARRIER
UNDER MOUNT TIRE CARRIER

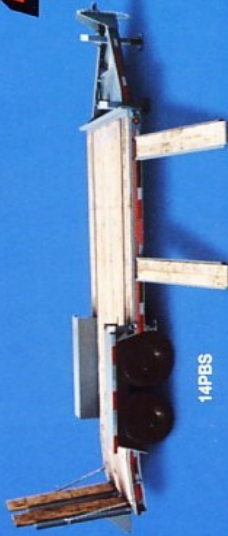
6100-1
6100

INTERSTATE TRAILERS, INC.

 <p>PINTLE EYE LOCK PART# 5805-2</p>	 <p>FLOOR SCREWS PART#6202</p>	 <p>2X8 OAK DECKING PART# 6200</p>
 <p>50 TON PINTLE HOOK PART# 2354454</p>	 <p>DECK CLIP CLIP KIT PART# 4644 # 4644-1</p>	 <p>50 TON PINTLE HOOK PART# 2354454S</p>
 <p>RATCHET BINDER 1/2" PART# 4595 3/8" PART# 4594</p>	 <p>4"X30' WINCH STRAP PART# 0430</p>	 <p>SELF CONTAINED RATCHET STRAP 2" – PART# 95111-1</p>

INTERSTATE

* The Definition of Value *



14PBS



40TDL



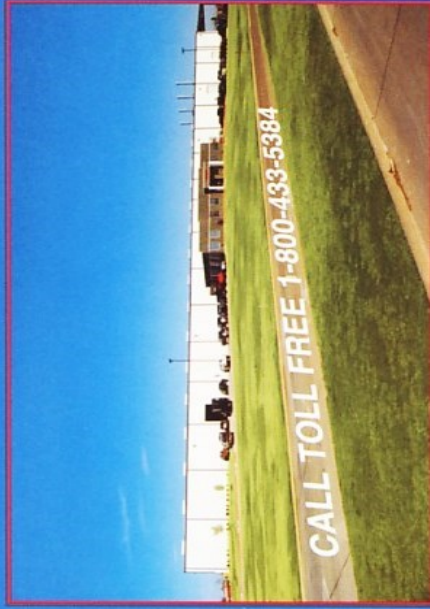
40APC



10ST/12ST



100SDGN



20DT

"Take the 10-Ton Challenge"



50/70LBG



50TDL



40DLA



50DLA

Ask Your
Sales Representative
for Details

INTERSTATE TRAILERS, INC.

1101 HERITAGE PARKWAY
MANSFIELD, TEXAS 76063
www.interstatetrailers.com