

INTERSTATE

TRAILERS, INC.

PARTS & SERVICE MANUAL



LARGE TILT SERIES TRAILERS

1101 HERITAGE PARKWAY · MANSFIELD, TX 76063 · 800-433-5384

INTERSTATE

TRAILERS, INC.

A note from Interstate Trailers to our valued dealers and customers.

The scope of this manual is to provide parts and service information for year model 1998 and newer TDL and APC large tilt series trailers. We have made our best effort to document the common replacement parts for these trailers. However, Interstate Trailers Inc. builds many custom trailers which may be equipped with parts and options not listed in this manual. Also, trailers older than model year 1998 have some differences and will require help from the factory staff to locate the correct parts. If you encounter such a situation please call our factory at 1-800-433-5384 between the hours of 8 a.m. to 5 p.m. standard time, M-F excluding holidays. Interstate Trailers recommends that you always have your VIN number (trailer serial) ready when calling a dealer or the factory to assist in locating the correct parts for your trailer. Interstate Trailers will make every effort to help find the correct replacement parts for your trailer and will strive to make your ownership experience as trouble free as possible.

Contact Information

**Interstate Trailers Inc.
1101 Heritage parkway
Mansfield, TX 76063**

**1-800-433-5384 phone
817-453-2672 parts department fax
www.interstatetrailers.com web address**

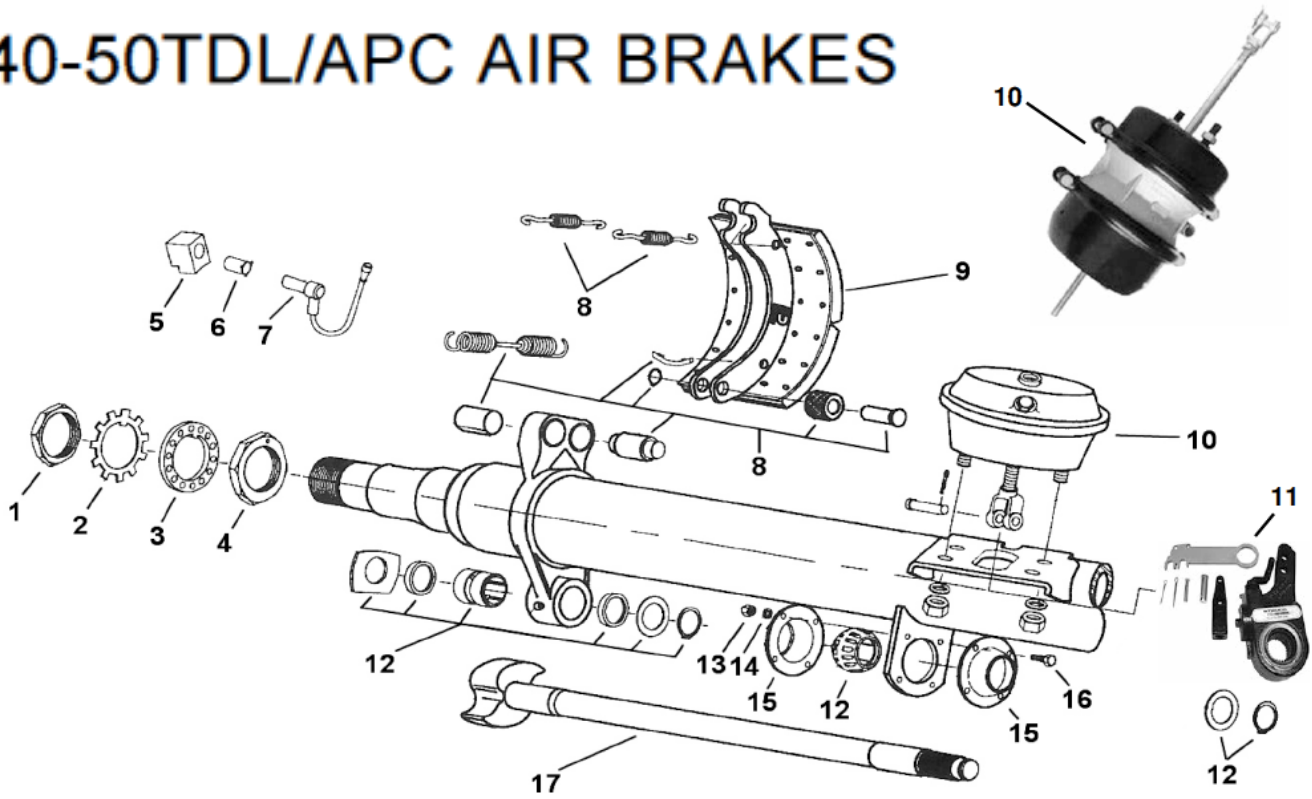
**Thank you!
The Interstate Trailers team.**

INTERSTATE TRAILERS, INC.

SUBJECT	PAGE
40-50TDL/APC AIR BRAKES	1
HUB PILOTED HUB & DRUM	2
STUD PILOTED HUB & DRUM	3
3-SPOKE HUB & DRUM / DRUM IDENTIFICATION	4
SUSPENSION	5
40TDL/APC AIR SYSTEM	6
50TDL/APC AIR SYSTEM	7
40TDL W/STAT. DECK, 50TDL & 40-50APC WIRING	8
40TDL STANDARD DECK HARNESS	9
40TDL STANDARD DECK WIRING	10
40TDL W/STAT. DECK, 40APC HARNESS	11
50TDL/APC HARNESS	12
LIGHTING	13
APC RAMPS & LINKAGE	14
HITCH & NOSEPLATE	15
LANDING GEAR	16
TILT BED LATCH COMPONENTS	17
CUSHION CYLINDER & BED	18
UNDER RIDE BUMPER & PLUMBING	19
AIR LATCH (06/2015 & UP)	20
MISCELLANEOUS PARTS	21
TIRE CARRIERS & DECAL KIT	22
TRAILER OPERATIONS CHECK LIST	23
TRAILER OPERATIONS CHECK LIST (CONTINUED)	24
ALIGNMENT PROCEDURE	25
MAINTENANCE SCHEDULE & SAFETY WARNINGS	26
MISCELLANEOUS PARTS	27
ABS DIAGNOSTICS	28

INTERSTATE TRAILERS, INC.

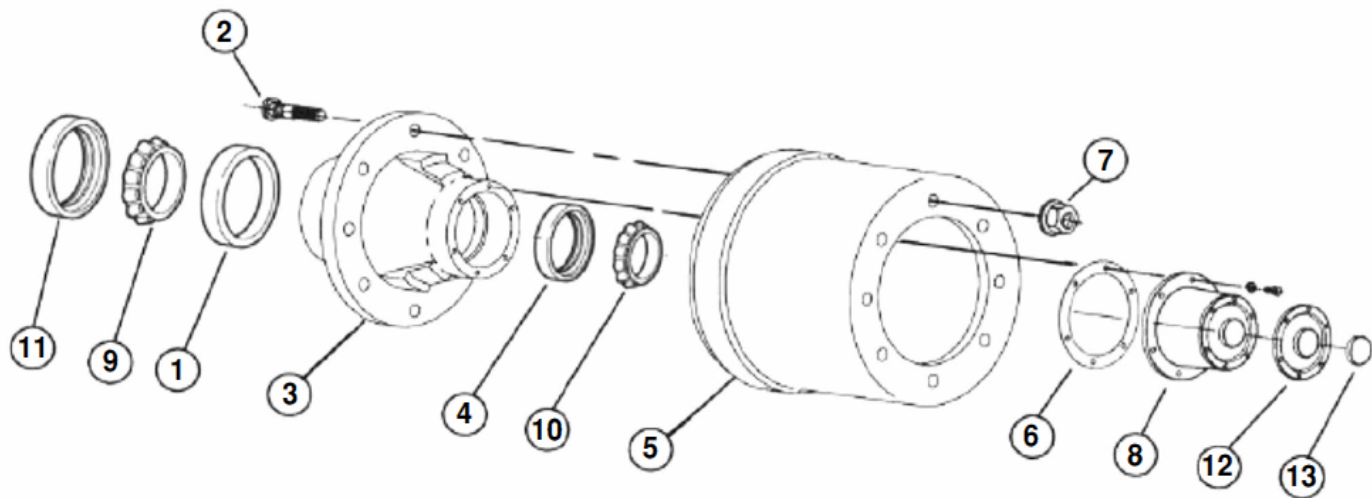
40-50TDL/APC AIR BRAKES



ITEM#	QTY PER WHEEL END	DESCRIPTION	PART NUMBER
1	1	OUTER SPINDLE NUT	5344
2	1	TANG WASHER	5838
3	1	SPINDLE BEARING LOCK WASHER	5837
4	1	INNER SPINDLE NUT	5836
5	VARIABLE	ABS SENSOR MOUNTING BLOCK	7005
6	VARIABLE	ABS SENSOR RETAINER CLIP	7002
7	VARIABLE	ABS SENSOR	7003
8	1	BRAKE SHOE HARWARE KIT	6235
9	2	BRAKE SHOE	5842-1
10	1	AIR CHAMBER, TYPE 30	5205
10	1	SPRING BRAKE CHAMBER TYPE 30/30	6299
11	1	SLACK ADJUSTER, 28 SPLINE AUTOMATIC	5207
12	1	S-CAM REPAIR KIT	6215
13	4	CAMSHAFT RETAINER PLATE NUT	6290
14	4	CAMSHAFT RETAINER PLATE LOCKWASHER	6289
15	2	CAMSHAFT RETAINER PLATE	6288
16	4	CAMSHAFT RETAINER PLATE BOLT	6287
17	1	S-CAM 1 1/2" 28 SPLINE	CALL FACTORY

INTERSTATE TRAILERS, INC.

8 BOLT HUB PILOTED HUB AND DRUM

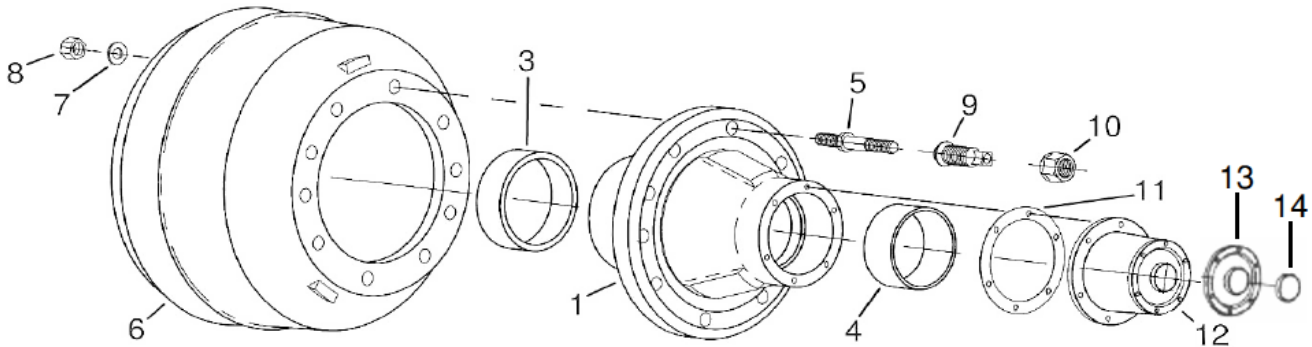


ITEM#	QTY PER HUB	DESCRIPTION	PART NUMBER
1	1	INNER BEARING CUP	5834
2	8	WHEEL STUD	7501
3	1	HUB, W/CUPS AND STUDS NON-ABS	7576
3	1	HUB, W/CUPS AND STUDS ABS	7577
4	1	OUTER BEARING CUP	5832
5	1	BRAKE DRUM, OUTBOARD MOUNTED	5535
6	1	OIL CAP GASKET	5157
7	8	FLANGED WHEEL NUT	7502
8	1	OIL CAP WITH GASKET	5831
9	1	INNER BEARING CONE	5835
10	1	OUTER BEARING CONE	5833
11	1	OIL SEAL	5824
11	1	OIL SEAL, HEAVY DUTY (TWO PIECE)	5824-1
12	1	WINDOW KIT, OIL CAP	8056
13	1	PLUG, OIL CAP	5826
*	1	OUTER BEARING SET (#4 & #10)	5833-1
*	1	INNER BEARING SET (#1 & #9)	5835-1

*ITEMS NOT SHOWN ON BREAKDOWN

INTERSTATE TRAILERS, INC.

10 BOLT "BUDD" HUB AND DRUM

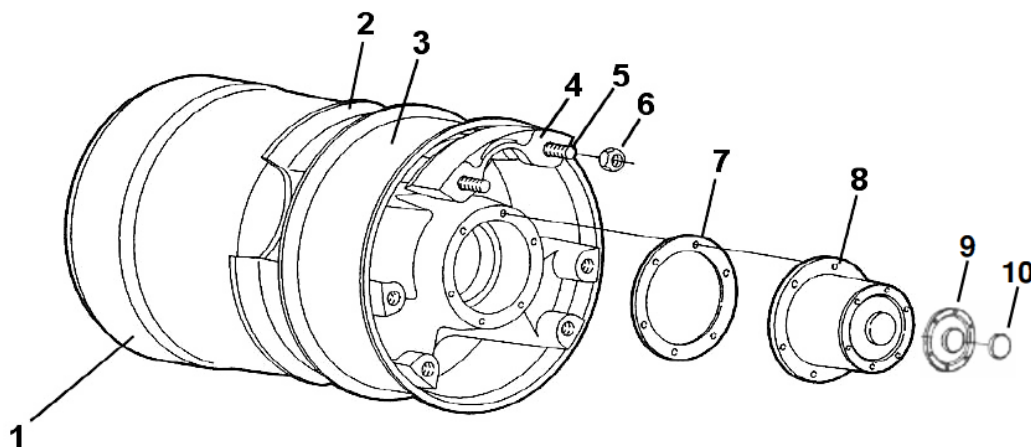


ITEM#	QTY PER HUB	DESCRIPTION	PART NUMBER
1	1	HUB, WITH CUPS AND STUDS (RIGHT)	5088-7
1	1	HUB, WITH CUPS AND STUDS (LEFT)	5088-8
3	1	INNER BEARING CUP	5834
4	1	OUTER BEARING CUP	5832
5	10	WHEEL STUD R/H	5537
5	10	WHEEL STUD L/H	5700
6	1	BRAKE DRUM, INBOARD MOUNTED	5534
7	10	DRUM MOUNTING WASHER	5349
8	10	DRUM MOUNTING NUT	5348
9	10	INNER LUGNUT R/H	5226
9	10	INNER LUGNUT L/H	5227
10	10	OUTER LUGNUT R/H	5228
10	19	OUTER LUGNUT L/H	5229
11	1	OIL CAP GASKET	5157
12	1	OIL CAP, WITH GASKET & FILL PLUG	5831
13	1	WINDOW KIT, OIL CAP	8056
14	1	PLUG, OIL CAP	5826
*	1	INNER BEARING CONE	5835
*	1	OUTER BEARING CONE	5833
*	1	OIL SEAL	5824
*	1	OIL SEAL HEAVY DUTY (2 PIECE)	5824-1
*	1	WINDOW KIT, OIL CAP	8056
*	1	OUTER BEARING SET	5833-1
*	1	INNER BEARING SET	5835-1
*	1	ABS RING (FOR HUB)	5088-9

*ITEMS NOT SHOWN ON BREAKDOWN

INTERSTATE TRAILERS, INC.

3-SPOKE HUB AND DRUM



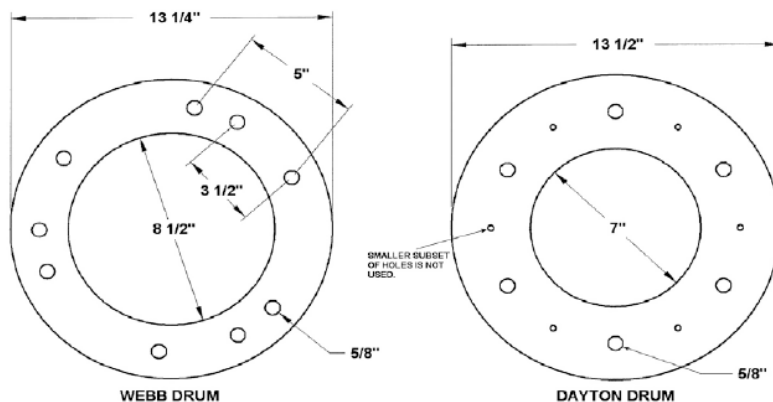
ITEM#	QTY PER HUB	DESCRIPTION	PART NUMBER
1	1	DRUM, "WEBB" PATTERN SEE NOTES BELOW	5083-1
1	1	DRUM, "DAYTON" PATTERN SEE NOTES BELOW	5083-2
2	1	HUB & DRUM COMBO, "WEBB" STYLE	5083-5
3	1	SPACER RING	5346
4	3	CLAMP WEDGE FOR "WEBB" HUB	5045
5	6	CLAMP WEDGE STUD FOR "WEBB" HUB	5087
6	6	CLAMP WEDGE NUT FOR "WEBB" HUB	5224
7	1	OIL CAP GASKET	5157
8	1	OIL CAP, WITH GASKET & FILL PLUG	5831
9	1	WINDOW KIT, OIL CAP	8056
10	1	PLUG, OIL CAP	5826
*	1	INNER BEARING CONE	5835
*	1	OUTER BEARING CONE	5833
*	1	INNER BEARING CUP	5834
*	1	OUTER BEARING CUP	5832
*	1	OIL SEAL	5824
*	1	OIL SEAL HEAVY DUTY (2 PIECE)	5824-1
*	1	WINDOW KIT, OIL CAP	8056
*	1	OUTER BEARING SET	5833-1
*	1	INNER BEARING SET	5835-1

DUE TO SUPPLY ISSUES INTERSTATE TRAILERS EQUIPPED WITH THE 3-SPOKE HUB/WHEEL DESIGN HAVE BEEN BUILT WITH TWO DIFFERENT PATTERN HUBS, THE "DAYTON" AND "WEBB" PATTERNS MENTIONED ABOVE.

THE END USER OF THE TRAILER MUST USE THE IDENTIFIER DIAGRAM ON THE NEXT PAGE OF THE PARTS MANUAL TO SELECT WHICH PATTERN IS FITTED TO THEIR TRAILER. REPLACEMENT DRUMS ARE CURRENTLY AVAILABLE FOR BOTH PATTERNS AS OF THE THE WRITING OF THIS MANUAL (04/2006). HOWEVER, REPLACEMENT HUBS AND SERVICE PARTS FOR THE HUB SUCH AS CLAMP WEDGES, STUDS, AND NUTS ARE ONLY AVAILABLE IN THE "WEBB" PATTERN.

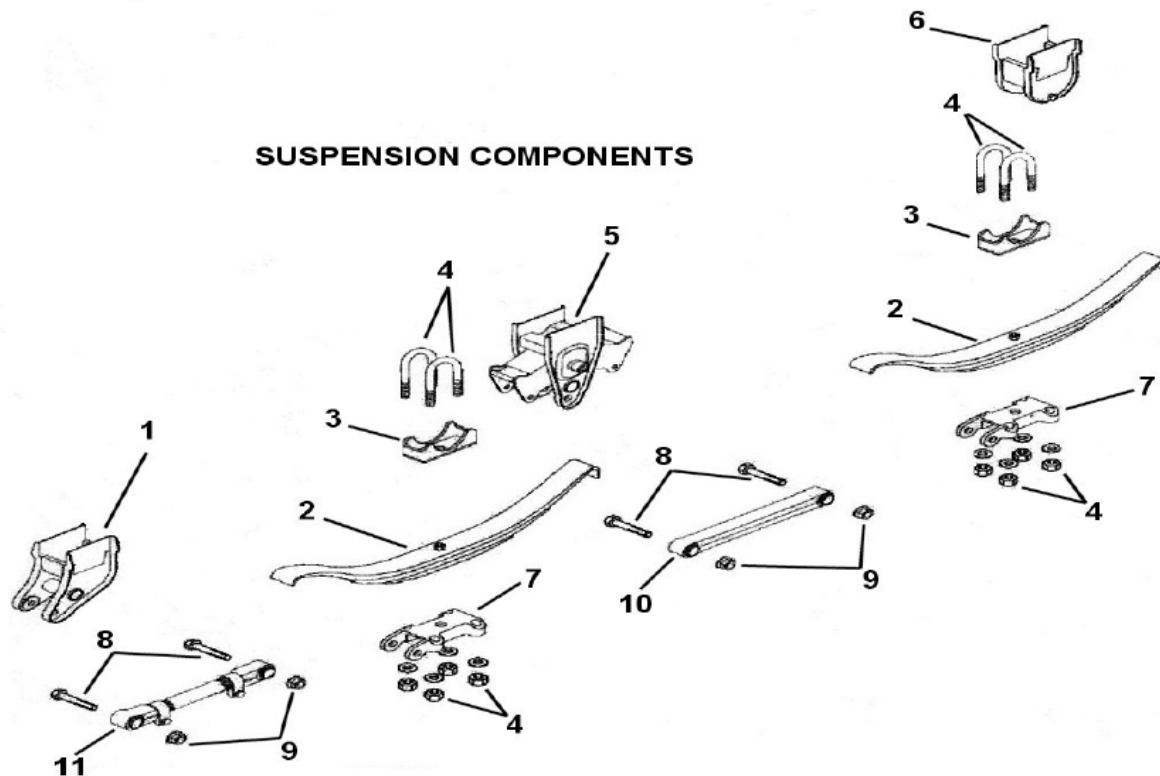
*ITEMS NOT SHOWN ON BREAKDOWN

3 SPOKE WHEEL DRUM IDENTIFICATION INFORMATION

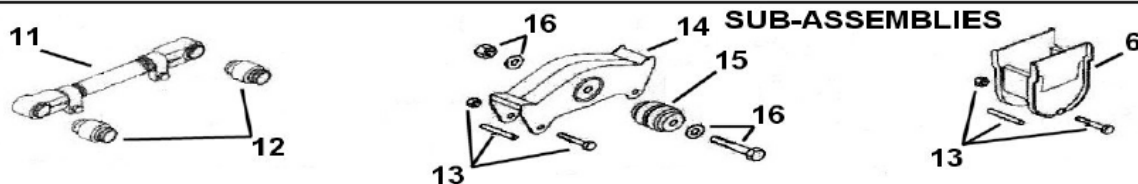


40-50TDL STANDARD MULTI-POINT SUSPENSION

SUSPENSION COMPONENTS



SUB-ASSEMBLIES



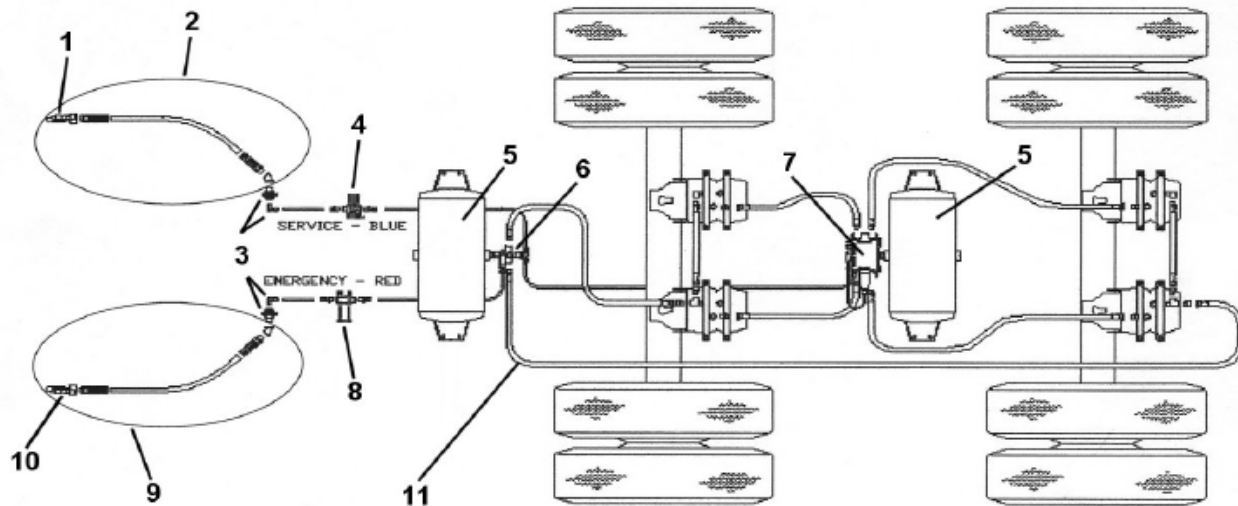
ITEM#	*QTY PER TRAILER	DESCRIPTION	PART NUMBER
1	2	FRONT HANGER	5116
2	4	3-LEAF SPRING	5136
3	4	AXLE SEAT	5127
4	8	U-BOLT WITH NUTS AND WASHERS	5129
5	2	CENTER HANGER WITH EQUALIZER	5114
6	2	REAR HANGER	5117
7	4	BOTTOM PLATE	5128
8	8	TORQUE ARM BOLT	5133
9	8	TORQUE ARM NUT	5134
10	2	FIXED TORQUE ARM	5132
11	2	ADJUSTABLE TORQUE ARM	5131
12	8	TORQUE ARM BUSHING	5132-1
13	6	REBOUND BOLT WITH SLEEVE AND NUT	5125-3
14	2	EQUALIZER WITH BUSHING	5125
15	2	EQUALIZER BUSHING	5125-2
16	2	EQUALIZER BOLT KIT	5125-1
	1	COMPLETE 40TDL/40ACP SUSPENSION KIT	5204-1
	1	C COMPLETE 50TDL/50APC SUSPENSION KIT	5204-2
*	2	HANGER SUPPORT TUBE	5110
*	2	HANGER SUPPORT TUBE REPAIR BAR	5110-1

*LISTED QUANTITIES ARE FOR A STANDARD 40TDL/APC. IF YOUR SUSPENSION DIFFERS FROM DIAGRAM CALL FACTORY FOR FURTHER INFORMATION

INTERSTATE

TRAILERS, INC.

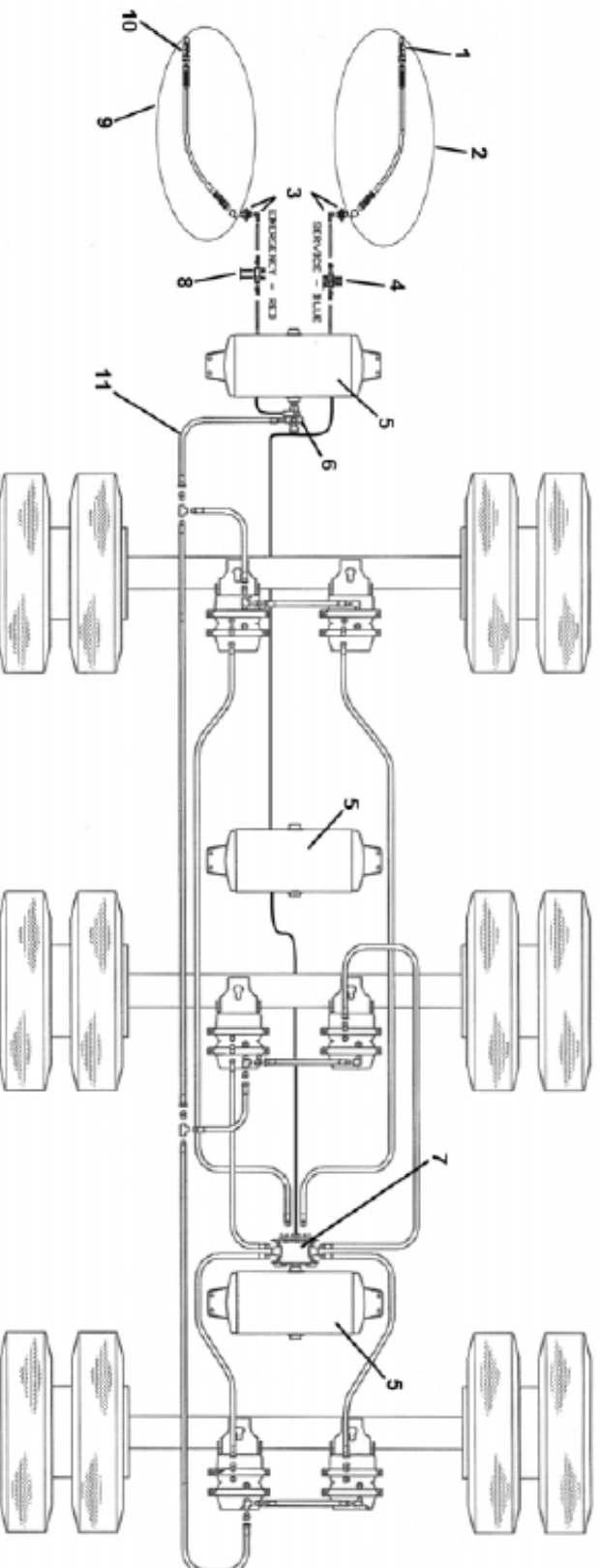
40TDL-40APC AIR SYSTEM



ITEM#	QTY PER TRAILER	DESCRIPTION	PART NUMBER
1	1	SERVICE GLADHAND	5361
2	1	SERVICE AIR HOSE ASM. W/GLADHAND & FITTINGS	5686
3	2	BULKHEAD FITTING AND ELBOW FITTING	5359
4	1	SERVICE AIR FILTER	5331-1
5	2	AIR TANK	5354
6	1	SPRING BRAKE CONTROL VALVE	5353-1
7	1	ABS VALVE/MODULE ASSEMBLY	5353-2
8	1	EMERGENCY AIR FILTER	5331
9	1	EMERGENCY AIR HOSE ASM. W/GLADHAND & FITTINGS	5687
10	1	EMERGENCY GLADHAND	5360
11	4	AIR HOSE, VARIOUS SIZES -CALL FACTORY	
		SPRING BRAKE CHAMBER	6299

INTERSTATE TRAILERS, INC.

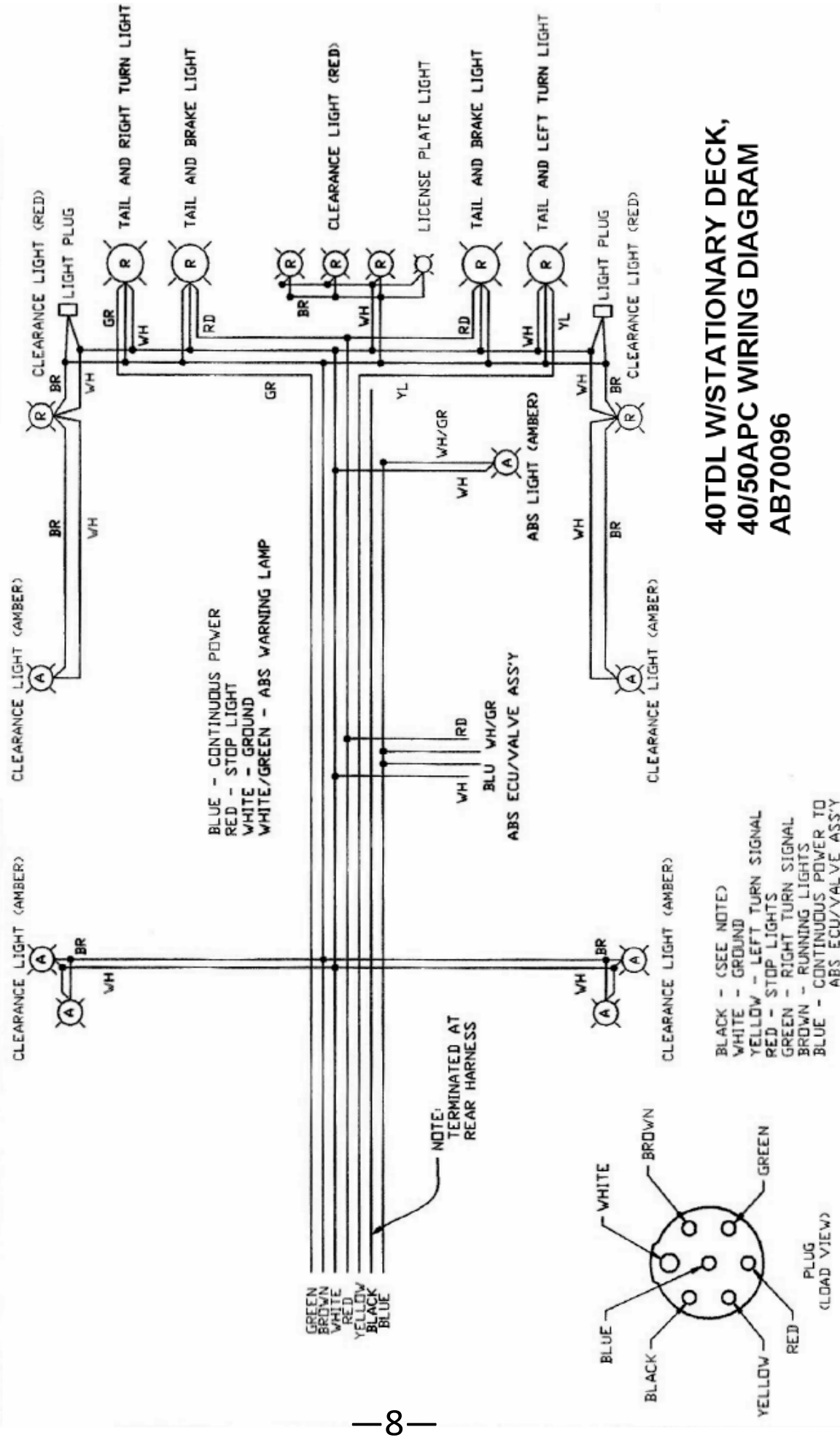
50TDL-50APC AIR SYSTEM



ITEM#	QTY PER TRAILER	DESCRIPTION	PART NUMBER
1	1	SERVICE GLADHAND	5361
2	1	SERVICE AIR HOSE ASM. W/GLADHAND & FITTINGS	5686
3	2	BULKHEAD FITTING AND ELBOW FITTING	5359
4	1	SERVICE AIR FILTER	5331-1
5	3	AIR TANK	5354
6	1	SPRING BRAKE CONTROL VALVE	5353-1
7	1	ABS VALVE/MODULE ASSEMBLY	5353-4
8	1	EMERGENCY AIR FILTER	5331
9	1	EMERGENCY AIR HOSE ASM. W/GLADHAND & FITTINGS	5687
10	1	EMERGENCY GLADHAND	5360
11	6	AIR HOSE, VARIOUS SIZES -CALL FACTORY	
		SPRING BRAKE CHAMBER	6299

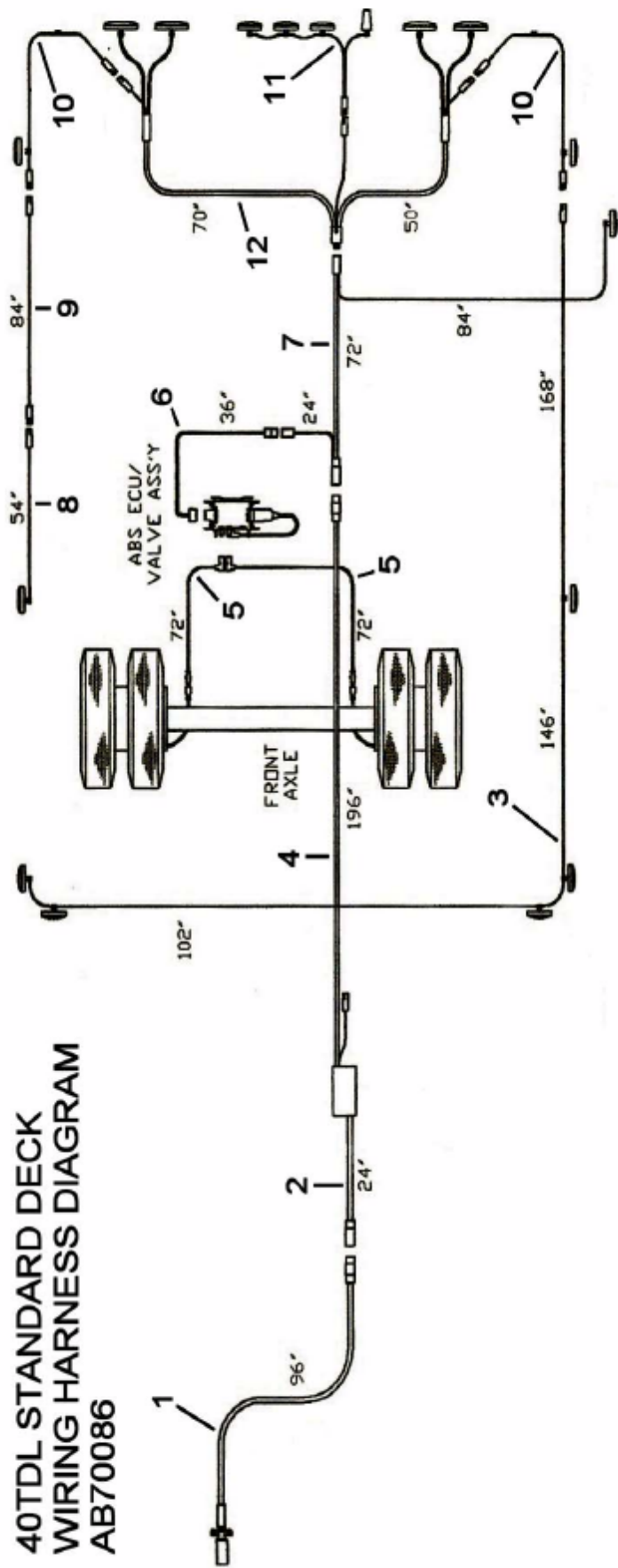
INTERSTATE TRAILERS, INC.

40TDL W/STATIONARY DECK, 50TDL, AND 40-50APC WIRING DIAGRAM



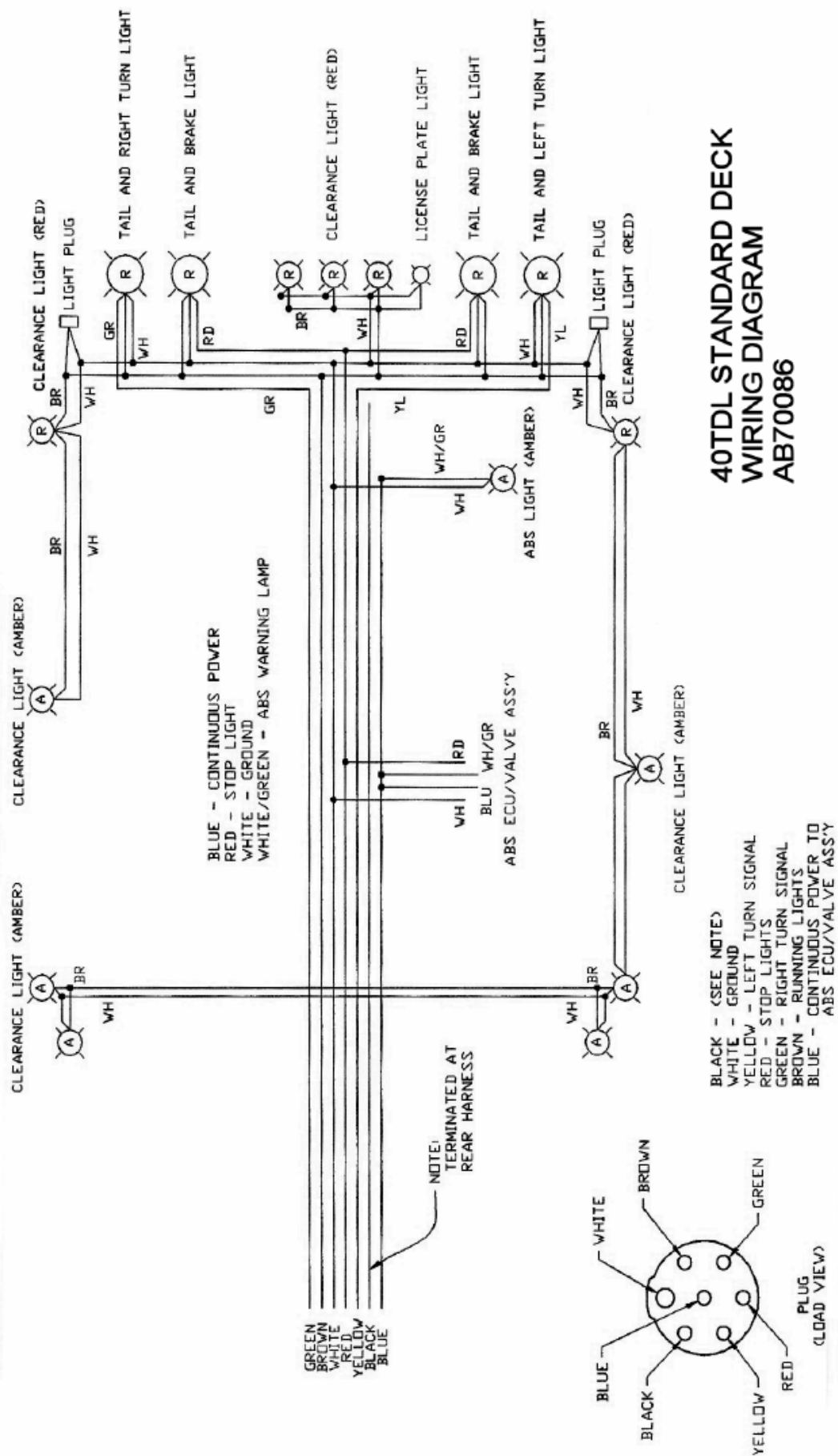
40TDL STANDARD DECK HARNESS DIAGRAM

40TDL STANDARD DECK WIRING HARNESS DIAGRAM AB70086



ITEM#	QTY PER TRAILER	DESCRIPTION	PART NUMBER
1	1	NOSE HARNESS 7-WAY STANDARD	102-2
1	1	NOSE HARNESS 6-WAY OPTIONAL	102-4
2	1	JUNCTION BOX LEAD OUT HARNESS	5993-1
3	1	FRONT MARKER LIGHT WRAP AROUND HARNESS	108-1
4	1	MAIN HARNESS, WITH JUNCTION BOX	0101-3
5	2	72" ABS SENSOR EXTENSION HARNESS	0100-2
6	1	ABS ECU POWER WIRE	0100-5
7	1	ABS MAIN HARNESS	0100-3
8	1	CENTER MARKER HARNESS	145
9	1	MARKER HARNESS EXTENSION	146
10	2	CORNER MARKER HARNESS	0122-2
11	1	REAR CENTER MARKER HARNESS	0126-2
12	2	REAR HARNESS, INCLUDES ITEM 10 AND 11	0104-1

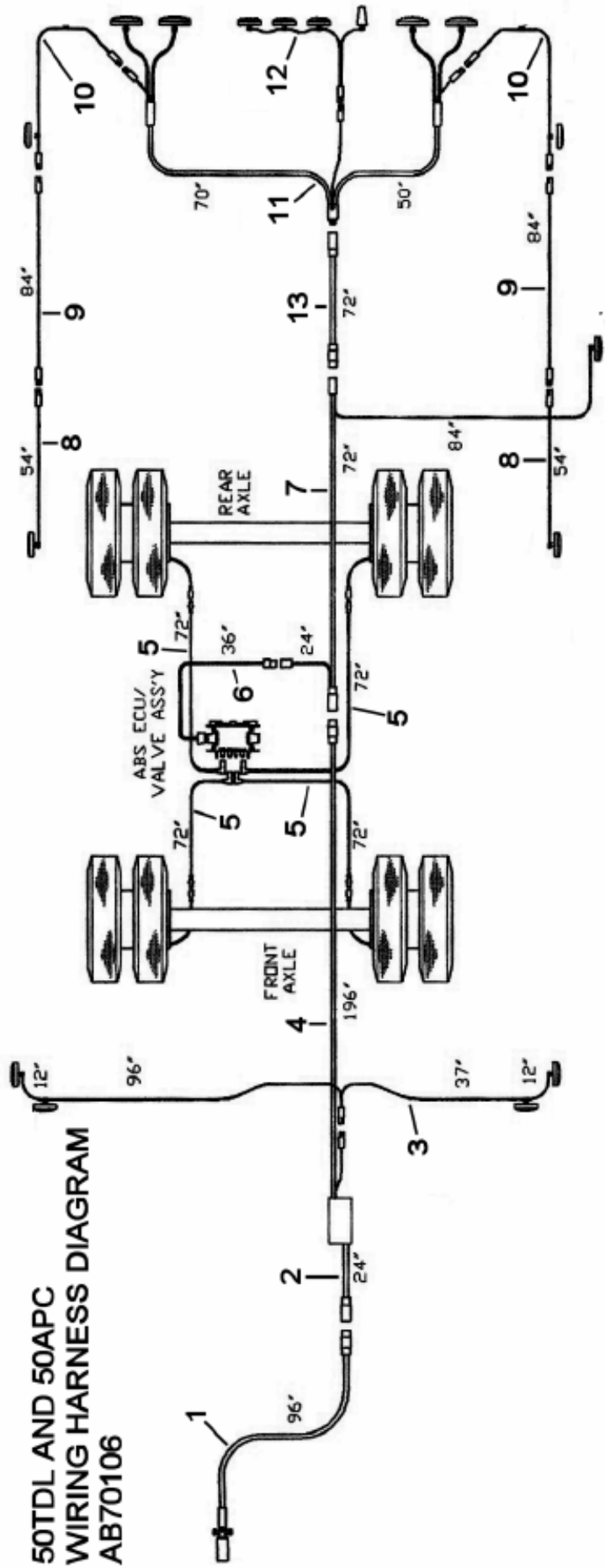
40TDL STANDARD DECK WIRING DIAGRAM



40TDL STANDARD DECK
WIRING DIAGRAM
AB70086

50TDL AND 50APC WIRING HARNESS DIAGRAM

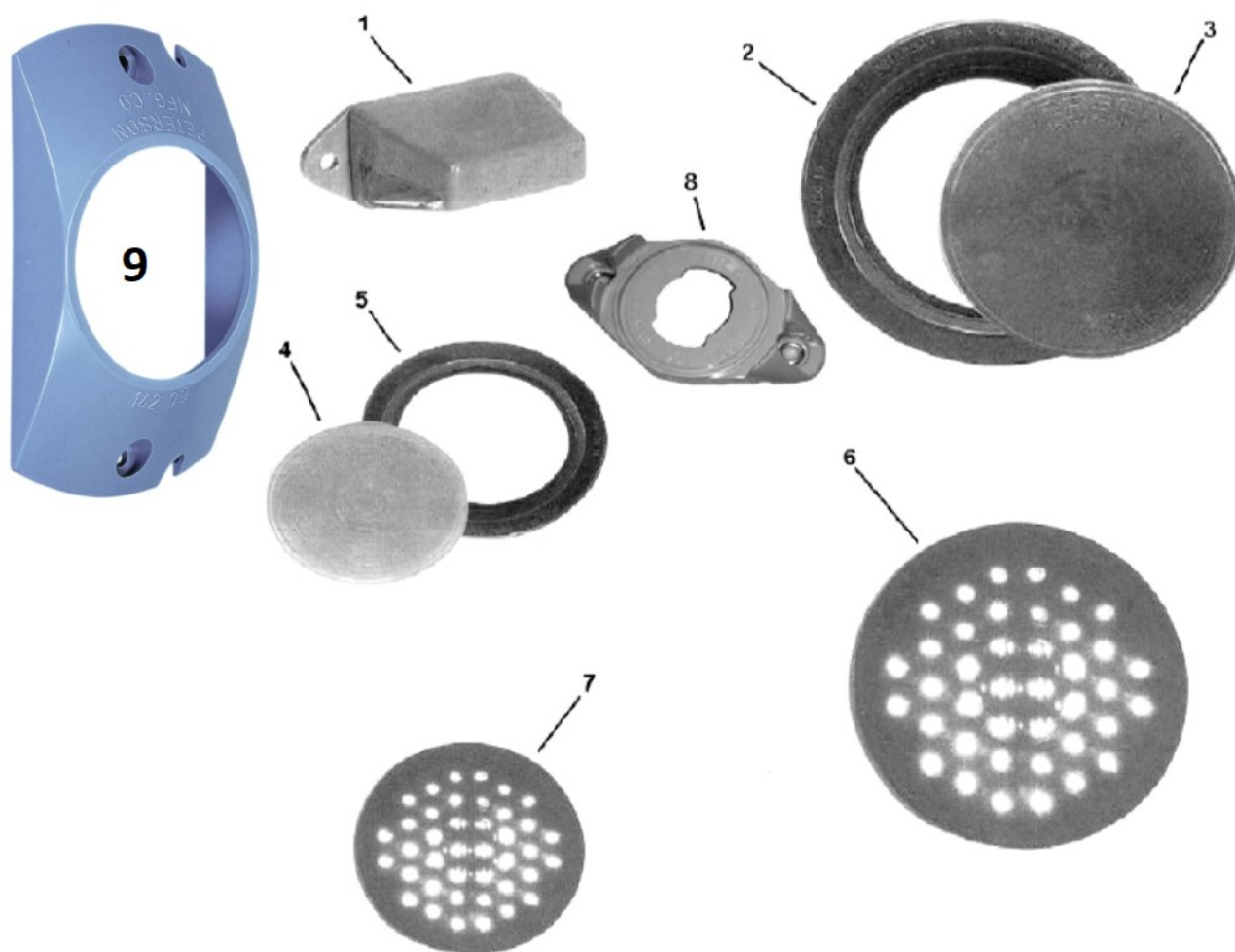
50TDL AND 50APC
WIRING HARNESS DIAGRAM
AB70106



ITEM#	QTY PER TRAILER	DESCRIPTION	PART NUMBER
1	1	NOSE HARNESS 7-WAY STANDARD	102-2
1	1	NOSE HARNESS 6-WAY OPTIONAL	102-4
2	1	JUNCTION BOX LEAD OUT HARNESS	5993-1
3	1	FRONT MARKER LIGHT HARNESS	108
4	1	MAIN HARNESS, WITH JUNCTION BOX	0101-3
5	4	72" ABS SENSOR EXTENSION HARNESS	0100-2
6	1	ABS ECU POWER WIRE	0100-5
7	1	ABS MAIN HARNESS	0100-3
8	2	CENTER MARKER HARNESS	145
9	2	MARKER HARNESS EXTENSION	146
10	2	CORNER MARKER HARNESS	0122-2
11	1	REAR HARNESS, INCLUDES ITEM 10 AND 12	0104-1
12	1	REAR CENTER MARKER HARNESS	0126-2
13	1	MAIN HARNESS EXTENSION 72"	130

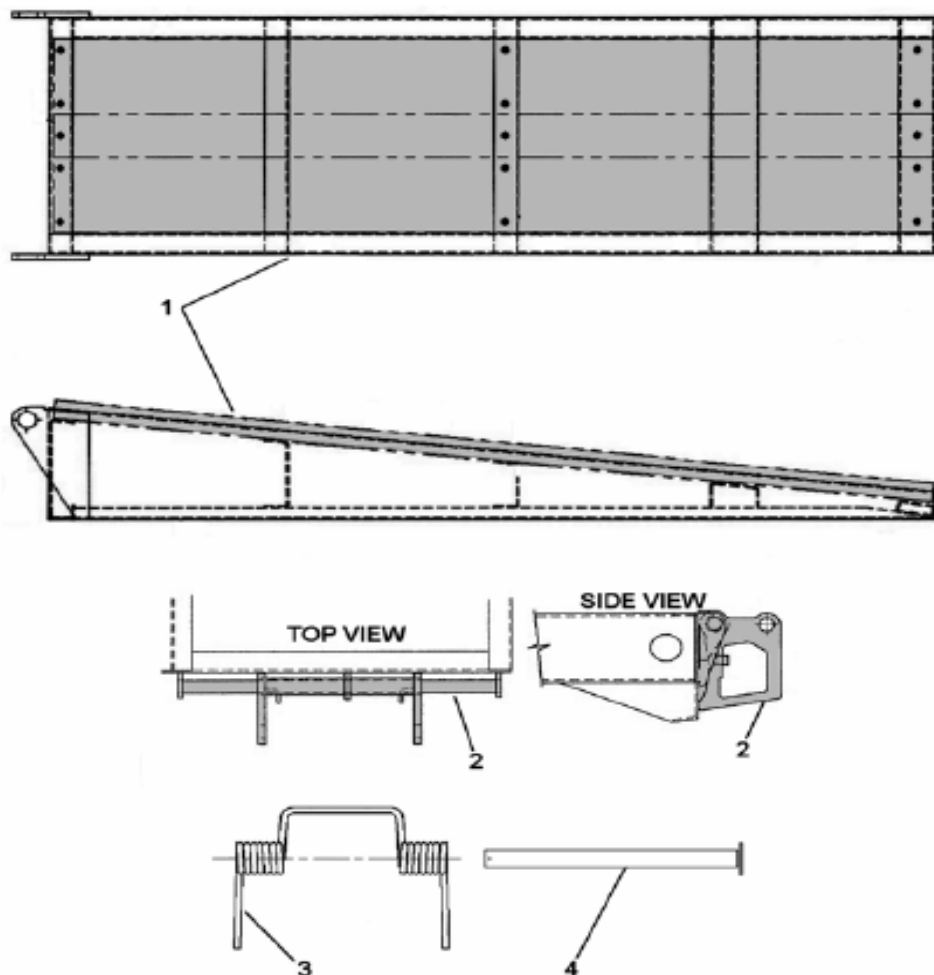
INTERSTATE TRAILERS, INC.

LIGHTING



ITEM#	DESCRIPTION	PART NUMBER
1	TAG LIGHT	7074
2	4" TAIL LIGHT MOUNTING GROMMET	7067
3	4" INCANDESCENT TAIL LIGHT	7068
4	2" INCANDESCENT MARKER LIGHT, RED	5170
4	2.5" INCANDESCENT MARKER LIGHT, RED	7070
4	2.5" INCANDESCENT MARKER LIGHT, AMBER	7071
5	2.5" MARKER LIGHT MOUNTING GROMMET	7069
6	4" L.E.D. TAIL LIGHT	7068-2
7	2" L.E.D. MARKER LIGHT, RED	5170-2
7	2.5" LED MARKER LIGHT, RED	7070-2
7	2.5" LED MARKER LIGHT, AMBER	7071-2
8	ABS LAMP MOUNTING BRACKET	7083
8	ABS BRACKET AND LIGHT COMBO	7083-1
9	BRANCH DEFLECTOR BRACKET	7080
	BRANCH DEFLECTOR W/GROMMET & LED LIGHT	7080-1

APC RAMPS AND LINKAGE



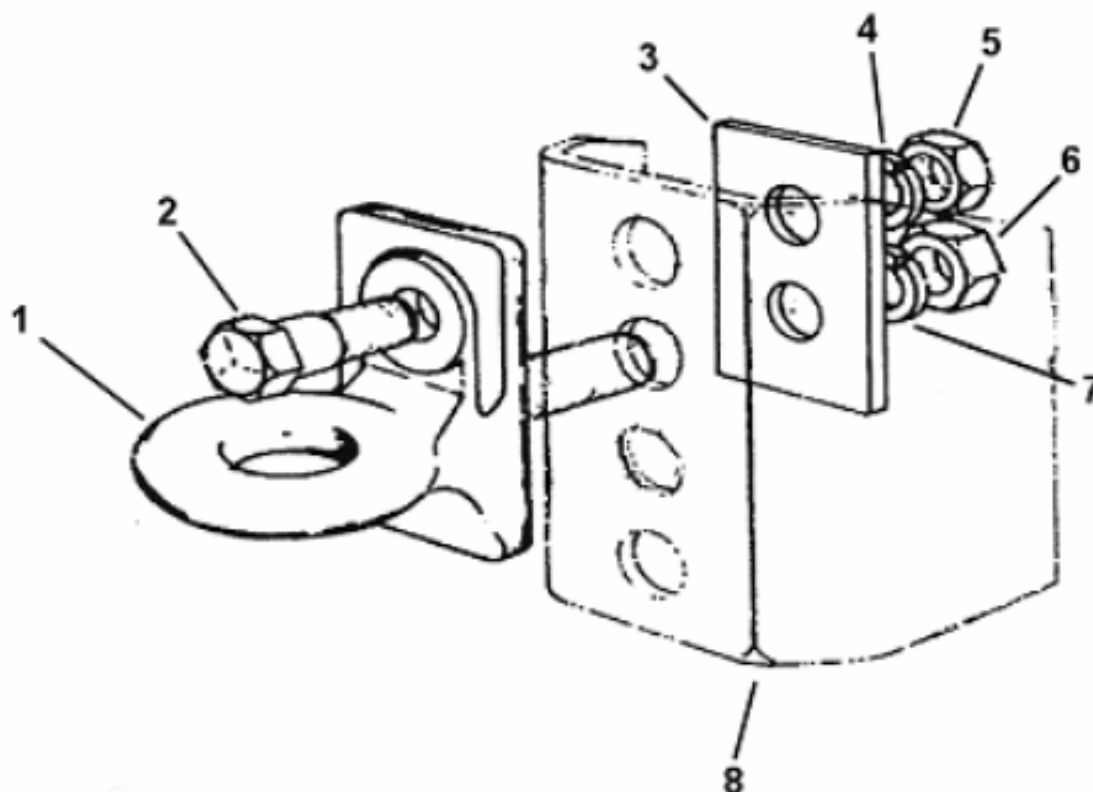
ITEM#	DESCRIPTION	PART NUMBER
1	APC RAMP (SHADED AREA IS WOOD DECKING)	8145
2	RAMP LINKAGE, APC (SHADED AREA)	4896
3	RAMP ASSIST SPRING, TWO COIL	4639
4	RAMP PIVOT PIN, APC	4640-10
	HEAVY DUTY APC RAMP (REINFORCED)	8145-2
	ALUMINUM APC RAMP SET	8145-3

*THIS BREAKDOWN IS INTENDED TO PROVIDE GENERAL INFORMATION FOR THE RAMPS AND LINKAGES FOR STANDARD APC TRAILERS.

YOUR TRAILER MAY DIFFER FROM THESE DRAWINGS, IF SO PLEASE CONTACT FACTORY WITH YOUR VIN NUMBER FOR UNIT SPECIFIC INFORMATION.

INTERSTATE TRAILERS, INC.

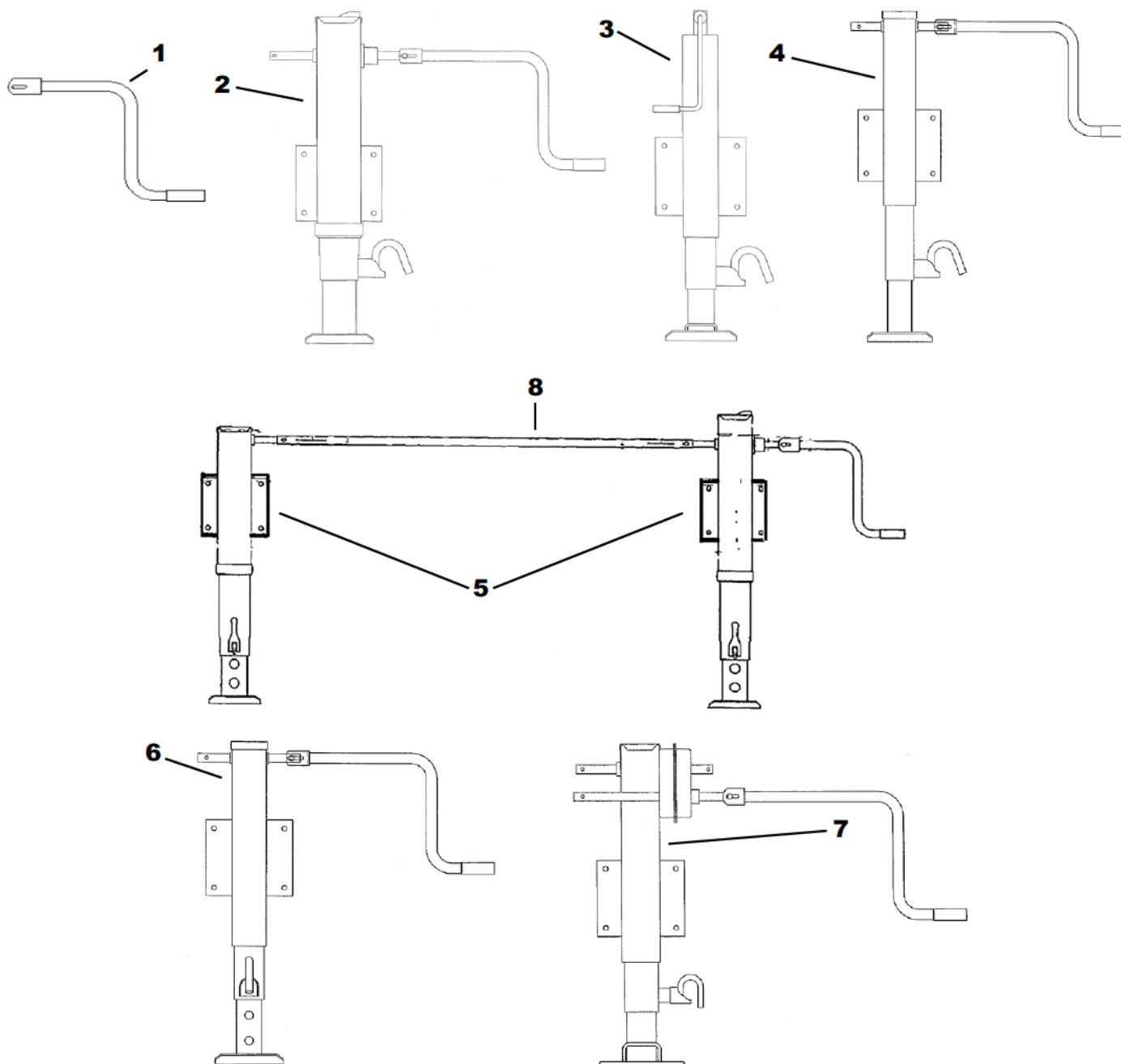
HITCH AND NOSEPLATE



ITEM#	DESCRIPTION	PART NUMBER
1	PINTLE HITCH, NO HARDWARE	4751
1	PINTLE HITCH, WITH HARDWARE (2-7)	4791
2	HITCH BOLT	4734
3	HITCH BACKING PLATE	5258
4	1.5" LOCK WASHER	4731
5	1.5" NUT	4730
6	2" NUT	4752
7	2" LOCK WASHER	4756
8	NOSE PLATE, WITH CHAIN ANCHORS 96in WIDE TRAILER	6131
8	NOSE PLATE, WITH CHAIN ANCHORS 102in WIDE TRAILER	6131-1

INTERSTATE TRAILERS, INC.

LANDING GEAR



ITEM# DESCRIPTION

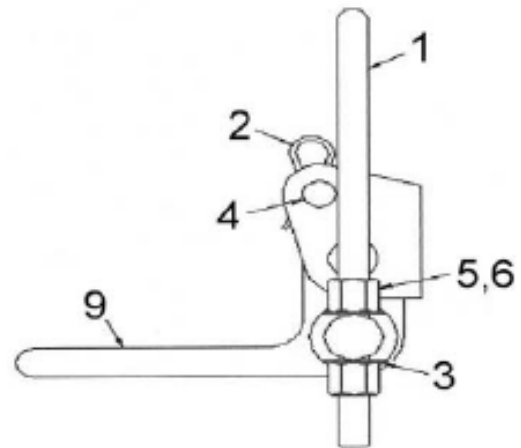
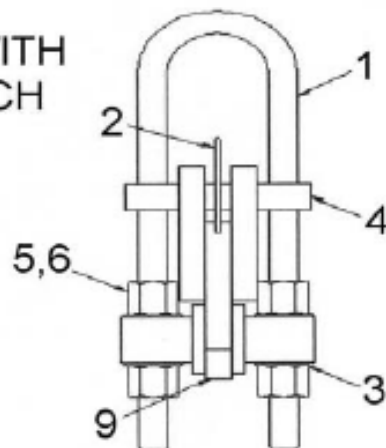
**PART
NUMBER**

1	JACK HANDLE, FITS ALL SIDEWIND JACKS	5648
2	TWO SPEED 25K JACK WITH DROP FOOT	7129
3	10K TOPWIND JACK WITH DROP FOOT	7114
4	12K SIDE WIND JACK WITH DROP FOOT	7130
5	25K TWO SPEED JACK SET INCLUDES BOTH JACKS, CROSS SHAFT, HANDLE, AND HEADBOARD MOUNTS	7125-1
6	12K JACK (FOR SINGLE SPEED DUAL JACK SET)	7125-8
7	25K JACK, 2-SPEED (HOLLAND)	7129-6
8	CROSS SHAFT, FOR DUAL JACK SET	7125-6

INTERSTATE TRAILERS, INC.

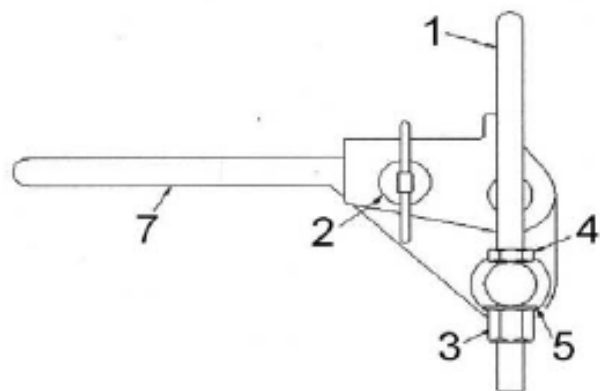
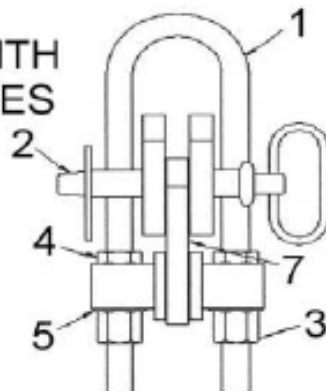
TILT BED LATCH COMPONENTS

TRAILERS WITH SINGLE LATCH



ITEM	DESCRIPTION	PART #
1	16" U Bolt	5257
2	Fab Locking Pin	5255
3	Washer	5256
4	Fab Locking Pin	5255
5	Nut	5366
6	Nut	5366
9	Handle	5370

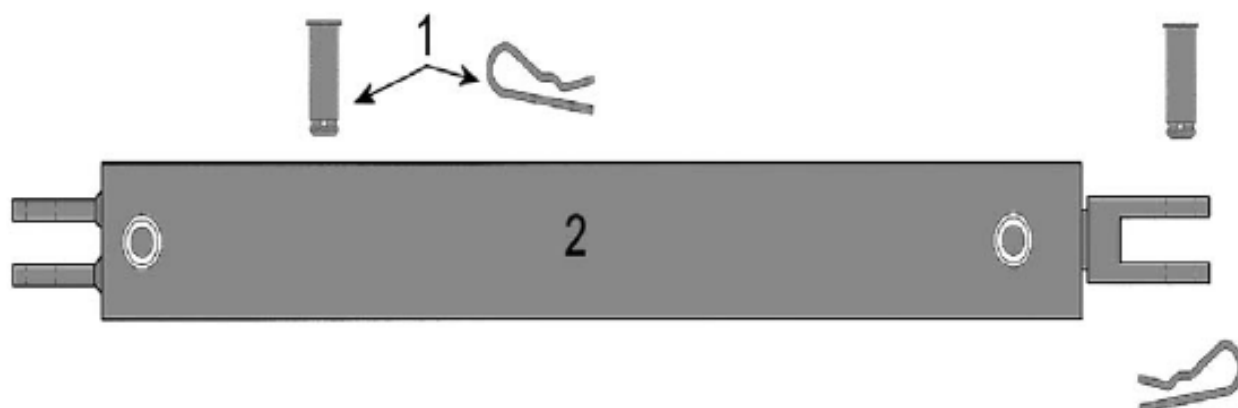
TRAILERS WITH DUAL LATCHES



ITEM	DESCRIPTION	PART #
1	14" U Bolt	5253
2	Hitch Pin	6865
3	Nut	5366
4	Jamb Nut	5256-1
5	Washer	5256
7	Handle	5369

INTERSTATE TRAILERS, INC.

CUSHION CYLINDER AND BED



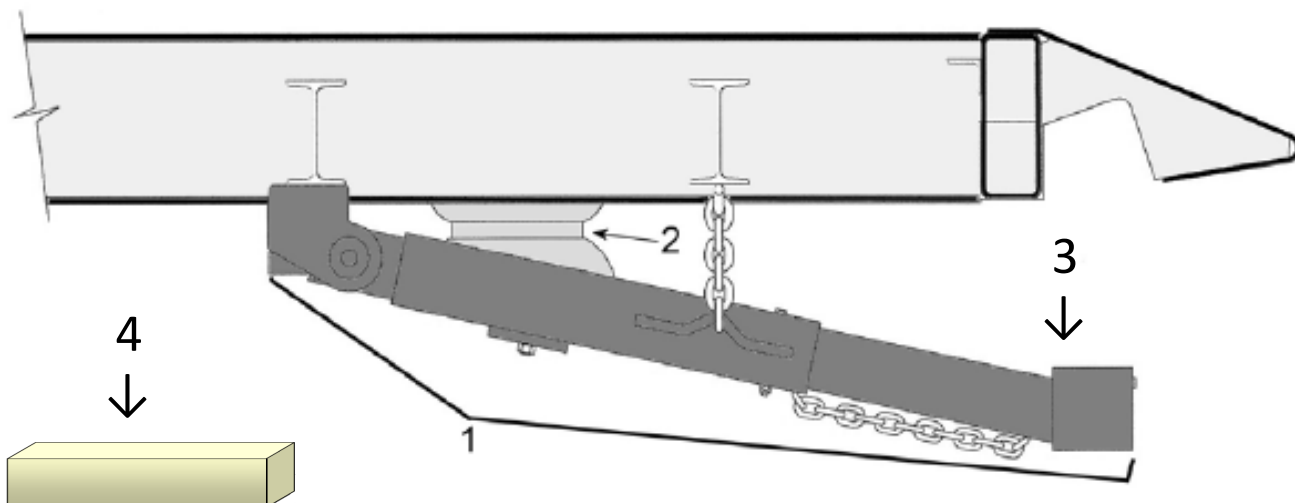
ITEM#	DESCRIPTION	PART NUMBER
1	CLEVIS PIN AND CLIP	5252
2	COMPLETE CYLINDER, INCLUDES 2 EA PINS & CLIPS	5246



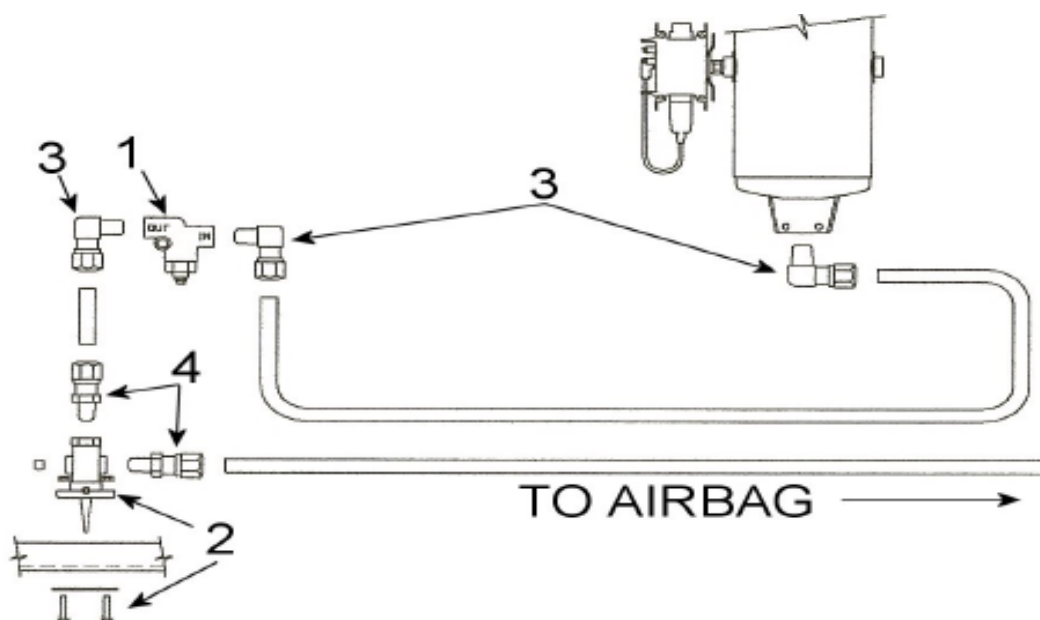
ITEM#	DESCRIPTION	PART NUMBER
1	COMPLETE BED ASSEMBLY *SPECIAL ORDER, CALL FACTORY	6204

INTERSTATE TRAILERS, INC.

UNDER RIDE BUMPER AND PLUMBING



ITEM#	DESCRIPTION	PART NUMBER
1	UNDER RIDE BUMPER, LARGE TILTS	5684*
2	AIR BAG, UNDER RIDE BUMPER	5685
3	REPLACEMENT BUMPER ONLY	5684-1
4	REPLACEMENT BUMPER BLOCK	5684-2

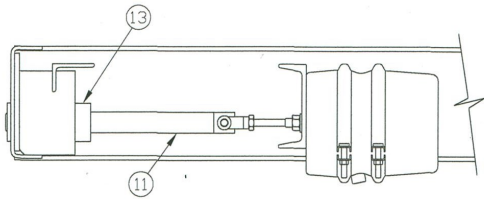


ITEM#	DESCRIPTION	PART NUMBER
1	REGULATOR, AIR BAG	6558-1
2	FLIP SWITCH, AIRBAG	6558
3	FITTING, 3/8 NPT-3/8 COMP 90 DEGREE	PP-200-E90-002
4	FITIING, 1/8 NPT-3/8 COMP STRAIGHT	PP-200-CON-006

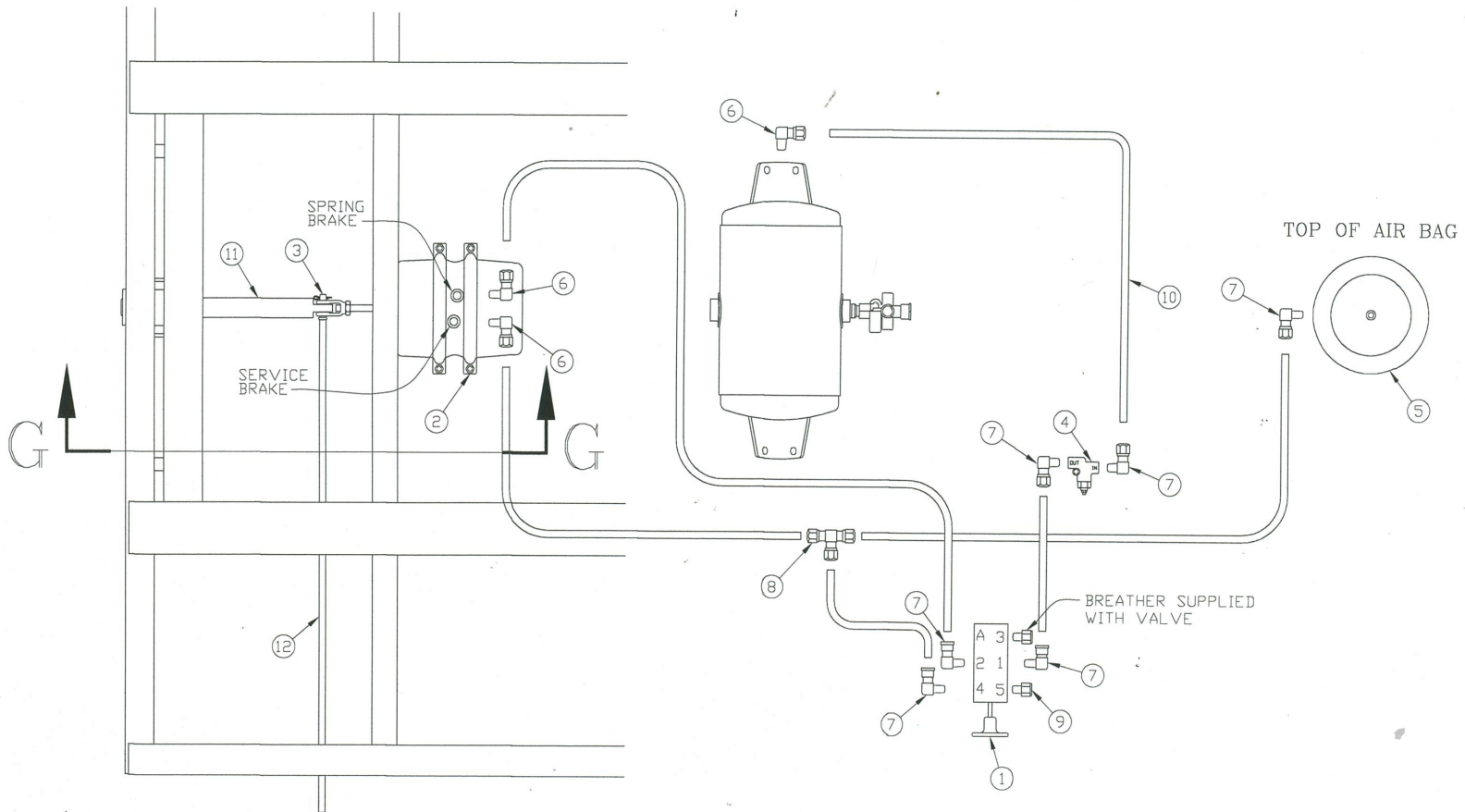
*UNDER RIDE BUMPER REQUIRES VIN NUMBER WHEN ORDERING

INTERSTATE TRAILERS, INC.

Air Operated Tilt Bed Lock - 06/2015 & UP



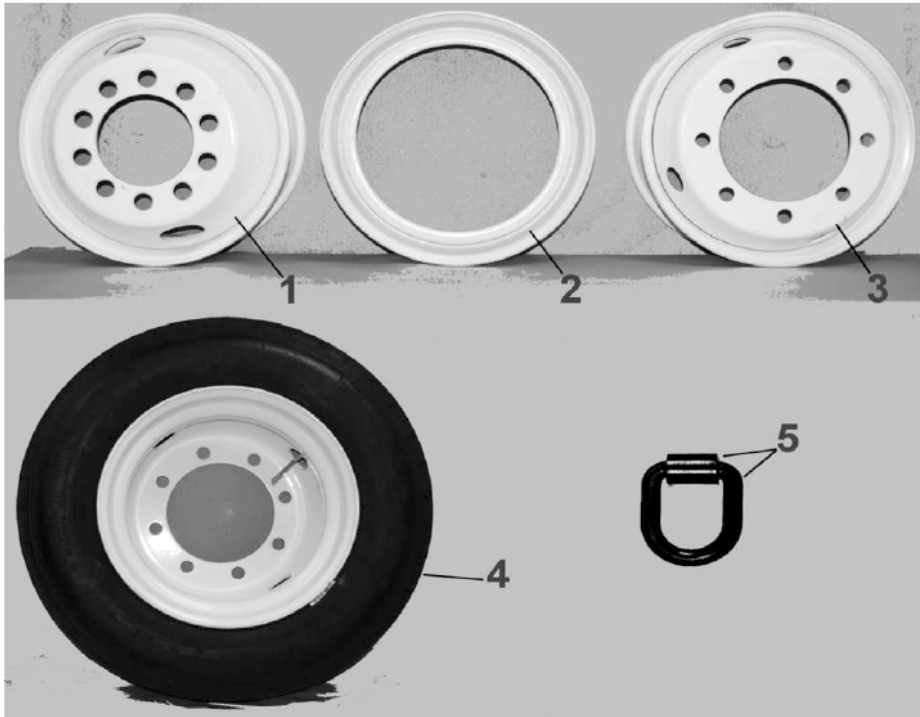
SECTION G—G



ITEM#	DESCRIPTION	PART #
1	PUSH/PULL VALVE	6557
2	BRAKE CHAMBER	6299
3	CLEVIS	6299-1
4	PRESSURE PROTECTION VALVE	6558-1
5	AIRBAG	5685
6	FITTING, 90 DEG ELBOW	5358
7	FITTING, 90 DEG MALE	6557-1
8	FITTING, TEE	5352-1
9	BREATHER FILTER	6557-3
10	NYLON AIR HOSE, BY THE FT	5352
11	LOCKING PIN , AIR LATCH	5251-5
12	INDICATOR BAR	5251-6
13	LOCKING PIN BUSHIING ASSEMBLY	5251-7

INTERSTATE TRAILERS, INC.

MISCELLANEOUS PARTS



ITEM#	DESCRIPTION	PART NUMBER
1	DUAL WHEEL, 17.5" 10 BOLT STUD PILOT	6140
2	DUAL WHEEL RIM, 17.5" FOR THREE SPOKE WHEEL	6139
3	DUAL WHEEL, 17.5" 8 BOLT HUB PILOT	7036
4	TIRE, 215/75R17.5 (TIRE ONLY).	6141
4	TIRE 235/75R17.5 (TIRE ONLY).	6161
4	TIRE AND WHEEL, 215/75R17.5 WITH 10 BOLT WHEEL	6140-1
4	TIRE AND WHEEL, 235/75R17.5 WITH 10 BOLT WHEEL	6140-3
4	TIRE AND WHEEL, 215/75R17.5 WITH SPOKE WHEEL	6139-1
4	TIRE AND WHEEL, 235/75R17.5 WITH SPOKE WHEEL	6139-2
4	TIRE AND WHEEL, 215/75R17.5 WITH HUB PILOT WHEEL	7036-2
4	TIRE AND WHEEL, 235/75R17.5 WITH HUB PILOT WHEEL	7036-1
5	D-RING WITH CLIP	4792
6	1/2" SAFETY HOOK GRADE 43	6849
7	1/2" SAFETY CHAIN WITH HOOK GRADE 43 (SILVER)	4739*
7	1/2" SAFETY CHAIN WITH HOOK GRADE 70 (GOLD)	4739-1*

*NOT SHOWN

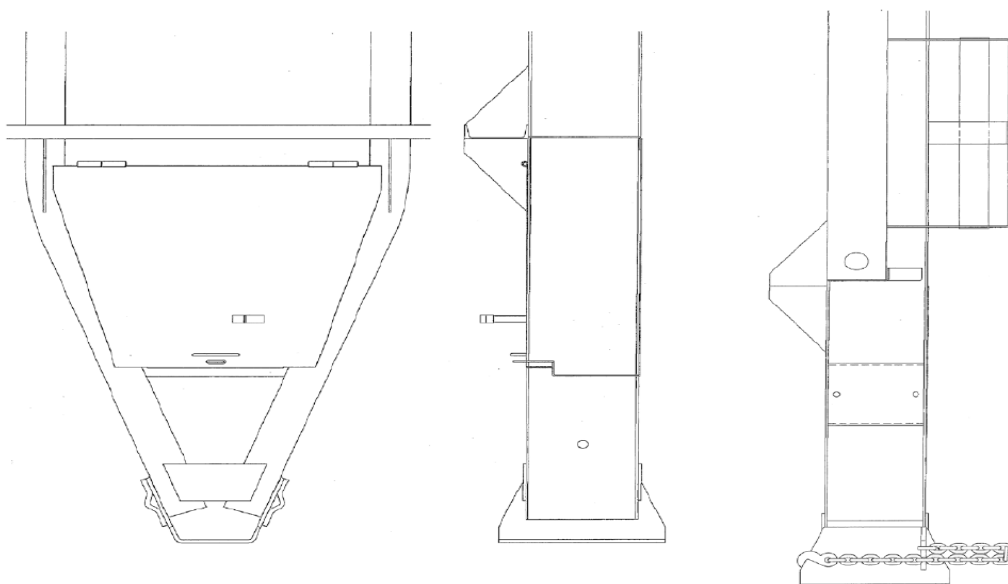
17.5" WHEEL SIMULATOR (SET OF 2)	7036-3
17.5" WHEEL SIMULATOR (EACH)	7036-4
17.5" 8 BOLT HUB PILOT POLISHED ALUMINUM RIM	7036-5

*PHOTO OF WHEEL AND TIRE ARE FOR ILLUSTRATION PURPOSES ONLY AND MAY APPEAR DIFFERENT THAN THE WHEEL AND TIRE ON YOUR TRAILER, GOLD COLOR GRADE 70 CHAINS AND HOOKS ARE USED ON 25 TON TRAILERS.

INTERSTATE TRAILERS, INC.

TOOL BOX LID

UPRIGHT TIRE CARRIER
UNDER MOUNT TIRE CARRIER



TOOL BOX LIDS AVAILABLE, VIN# IS NEEDED TO ORDER

UPRIGHT TIRE CARRIER
UNDER MOUNT TIRE CARRIER

6100-1
6100

DECAL KIT



ITEM# DESCRIPTION

PART
NUMBER

- | | |
|---|---|
| 1 | <p>DECAL KIT, ALL LARGE TILT SERIES TRAILERS</p> <p>*MUST PROVIDE SERIAL NUMBER AND COLOR OF TRAILER WHEN ORDERING.</p> |
|---|---|

6095-1



Trailer Operations Check List

Proper Loading Procedures:

1. Ensure that tow vehicle and trailer are on level ground.
2. Engage parking brake on tow vehicle. Place chock blocks in front of and behind trailer tires.
3. Check to see that hitch is properly secured to tow vehicle.
4. Raise landing gear and secure in travel position to avoid damage during loading.
5. Clear trailer deck of all debris and obstacles before loading.
6. Fold down loading ramps making sure that all personnel are clear of a dropping ramp or any pinch points. Ramps are extremely heavy and caution should be exercised at all times while raising and lowering.
7. Adjust loading ramps so that center of ramps line up with track centers of equipment being loaded.
8. Clear ramps of any debris such as mud, ice or snow that could cause loss of traction while loading.
9. Load equipment and position so that load is properly balanced both front to back and side to side. An improperly balanced load may cause abnormal tire wear, suspension damage or dangerous towing characteristics such as fishtailing.
10. Secure load per D.O.T. Federal Motor Carrier Safety Regulations 392.9, 393.100 and 393.102. If you have any questions, contact your local law enforcement or D.O.T. before towing.
11. Raise and secure loading ramps into travel position using the same precautions outlined in step 6 above.
12. Remove all chock blocks and store properly.
13. Make a final visual inspection of the tow vehicle, trailer and load for any abnormalities.

***** The above steps are to provide you with a basic guideline for safely loading your trailer. Common sense and extreme caution should always be exercised while applying these steps.

Pre-Trip Inspection:

1. Check and correct air pressure on all tires of the tow vehicle and trailer.
2. Make sure the wheel lug nuts/bolts on the trailer are tightened to the correct torque specifications. Failure to do so may result in wheel damage.



Page 2 of 2 – Trailer Operations Check List

3. Be sure the hitch, coupler, draw bar, and other equipment that connect the trailer and the tow vehicle are properly secured and adjusted. Trailer should run level when loaded.
4. Check that the wiring is properly connected - not touching the road, but loose enough to make turns without disconnecting or damaging the wires.
5. Make sure all running lights, brake lights, turn signals, and hazard lights are working.
6. Attach safety chains to tow vehicle, cross them if possible. Chains should be loose enough as not to bind while turning.
7. Verify that the brakes on the tow vehicle and trailer are operating correctly. Air lines should be secured in a manner which prevents chafing and pinching during travel.
8. Be sure the trailer jack, tongue support, and any attached stabilizers are raised and locked in place.
9. Check load distribution to make sure the tow vehicle and trailer are properly balanced front to back and side to side.
10. Inspect D-rings and clips before use - replace if cracked, worn, or deformed.
11. Check to ensure that all loads have been secured per D.O.T. Federal Motor Carrier Safety Regulations 392.9, 393.100 and 393.102. If you have any questions, contact your local law enforcement or D.O.T. before towing. **
12. While in transit, periodically stop to check load to ensure that securement devices such as chains, binders and straps are tight and load has not shifted.

** Requirements for securing loads differ from state to state. Please familiarize yourself with all state and local regulations before transporting any loads.

Weekly Inspections:

1. Inspect tow hitch for excessive wear. Replace when needed.
2. Check for proper tow hitch to noseplate connection. Tighten as needed.
3. Inspect wheels for cracks or deformities. Replace if needed.
4. Inspect suspension components for excessive wear, cracks or deformities. Replace or repair as needed.
5. Inspect trailer frame for cracks and deformities. Repair as needed.
6. Check tires for excessive or unusual wear. Unusual wear may indicate a suspension alignment or tire inflation problem. Repair or replace as needed.
7. Inspect decking for broken, rotted or missing boards. Replace as needed.

**** Information provided is a basic guideline for safe trailer operation and in no way supersedes Federal, State or Local regulations.

Hutch 9700 Alignment Procedure

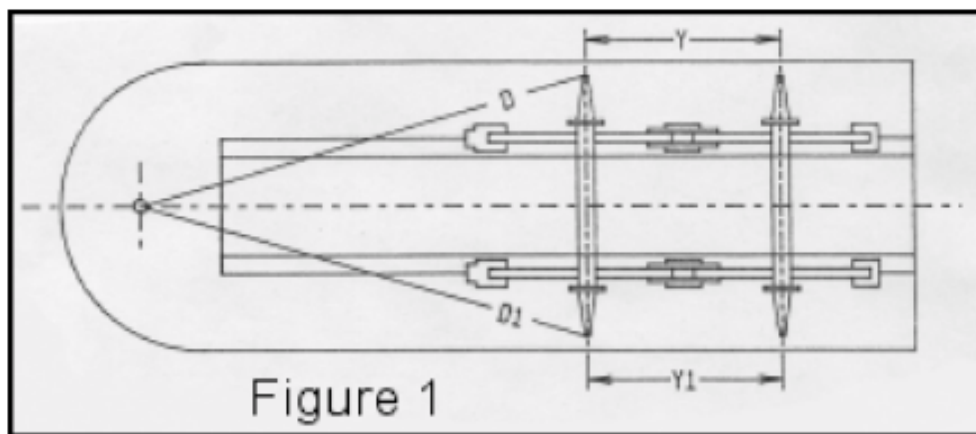
Your Hutch suspension is designed to require a minimum of service. The key to a successful service life, however, is a thorough inspection of the suspension after a short break-in period to make certain all nuts and bolts are properly torqued, and a regular periodic inspection thereafter. This is essential to assure continuous trouble free operation. The frequency of your preventative maintenance inspections depends upon your operation, such as: the terrain your trailers operate over, the mileage per month, etc.

Alignment

Before attempting alignment, make sure the trailer is not loaded. Be sure the suspension has not been placed in a "blind" by being jack-knifed into a bay or having gone through any other unusual maneuver. The suspension must be free and loose in order to obtain a true alignment.

To align, measure the distance from the king-pin / pintle eye to the centerline of the spindle on the front axle. If the dimensions "D" and "D1" (figure 1, below) are not the same, turn the adjustable torque arm screw until the two dimensions are the same. Next, align any succeeding axle from the front axle. Move the adjustable torque arm until "Y" and "Y1" (figure 1, below) are the same. When all axles are properly aligned, make sure all clamp bolts on adjustable torque arms are tightened to 85 foot pounds.

It is to be understood that all alignments are to be performed on smooth, level and flat surfaces with the trailer empty. True readings cannot be obtained if alignment is performed on loaded trailers in the street or on rough terrain.



Note to dealers:

All Interstate trailers come from the factory pre-aligned and should not require any adjustments prior to customer delivery.

INTERSTATE TRAILERS, INC.

MAINTENANCE SCHEDULE

- | | |
|-----------------------|---|
| TIRES | - CHECK DAILY - MAINTAIN 215/75 R 17.5 TIRES @ 125 PSI COLD. |
| WHEEL LUGS | - CHECK WEEKLY -
TORQUE DEMOUNTABLE RIM CLAMP NUTS TO 210-260 FT. LBS.
TORQUE INNER AND OUTER LUG NUTS ON 10 BOLT HUBS TO 450-500 FT. LBS.
TORQUE FLANGED LUGNUTS ON HUB PILOT WHEELS TO 275-325 FT. LBS. |
| WHEEL BEARINGS | - CHECK OIL LEVEL DAILY. USE SAE 80W-90 API-GL-5 OIL |
| BRAKES | - SHOULD BE CHECKED FOR ADJUSTMENT MONTHLY. BRAKE LININGS SHOULD BE REPLACED WHEN LININGS ARE WORN TO RIVET HEADS (AIR) OR BACKING PLATE (ELECTRIC). DO NOT WEAR LININGS PAST RIVET HEADS OR INTO BACKING PLATE. |
| SUSPENSION | - THE HUTCHENS 9700 SUSPENSION DOES NOT REQUIRE LUBRICATION. THE SUSPENSION SHOULD BE INSPECTED FOR WEAR PERIODICALLY AND ANY WORN PARTS SHOULD BE REPLACED IMMEDIATELY. |
| TOW RING | - INSPECT FOR TIGHTNESS DAILY BEFORE USE. RING PLATE MUST BE TIGHT AGAINST NOSE PLATE TO PREVENT NOSE PLATE DEFORMATION. RING SHOULD BE INSPECTED DAILY AND REPLACED IF RING SHOWS EXCESSIVE WEAR. TO INSTALL RING ON TRAILER DETERMINE PROPER HEIGHT ACCORDING TO THE TOW VEHICLE WHICH WILL BE USED. INSTALL TOW RING WITH BOLT IN THE LOWER POSITION WHENEVER POSSIBLE. TIGHTEN NUTS ON BOLT AND STUD UNTIL BOTH LOCK WASHER ARE FULLY COMPRESSED. DO NOT USE WITH A TOW HITCH THAT IS EXCESSIVELY LOOSE OR ONE THAT BINDS WHEN TURNING. |
| LIGHTS | - CHECK PLUG FOR CONDITION AND TIGHTNESS OF TERMINALS. INSPECT ALL LIGHTS FOR PROPER OPERATION DAILY AND REPLACE BULBS AS NEEDED. |
| JACK(S) | - CHECK JACK DAILY FOR ANY PHYSICAL DAMAGE OR LACK OF OPERATION DUE TO RUST OR CORROSION. REPLACE IF SEVERELY RUSTED OR DAMAGED. CHECK MOUNTING BOLTS FOR TIGHTNESS AND BE SURE LOCKING HARDWARE IS USED. |
| SPECIAL NOTE ON PAINT | - IN AREAS WHERE DE-ICING CHEMICALS ARE USED BE SURE TO WASH TRAILER REGULARLY DURING WINTER MONTHS TO PREVENT DAMAGE FROM CORROSIVE DE-ICING AGENTS. INTERSTATE TRAILERS INC. WILL NOT HONOR PAINT WARRANTY CLAIMS IF DAMAGE IS DETERMINED TO BE CAUSED BY PROLONGED CONTACT WITH DE-ICING AGENTS. |

WARNINGS

- | | |
|-----------|--|
| *WARNING* | - BE SURE TRAILER IS CONNECTED TO TOW VEHICLE WHEN LOADING AND UNLOADING MACHINERY. LOCK TRUCK BRAKES BEFORE LOADING AND UNLOADING |
| *WARNING* | - CHECK TIRE INFLATION DAILY |
| *WARNING* | - CHECK WHEEL LUGS WEEKLY |
| *WARNING* | - USE CAUTION WHEN RAISING OR LOWERING REAR RAMPS.
DO NOT PLACE HANDS OR FEET UNDER RAMPS WHEN RAISING OR LOWERING! |
| *WARNING* | - TRAILER SHOULD BE LEVEL WHEN FULLY LOADED. ADJUST HITCH TO MAKE TRAILER LEVEL WHEN LOADED. |

HUTCHENS RECOMMENDS THAT ALL NUTS AND BOLTS BE CHECKED TO INSURE THAT THE RECOMMENDED TORQUE VALUES ARE BEING MAINTAINED AFTER AN INITIAL BREAK IN PERIOD (APPROXIMATELY 1000 MILES) AND AT LEAST EVERY 4 MONTHS PERIODICALLY THEREAFTER.

 <p>PINTLE EYE LOCK PART# 5805-2</p>	 <p>FLOOR SCREWS PART#6202</p>	 <p>2X8 OAK DECKING PART# 6200</p>
 <p>50 TON PINTLE HOOK PART# 2354454</p>	 <p>DECK CLIP PART# 4644</p> <p>CLIP KIT # 4644-1</p>	 <p>50 TON PINTLE HOOK PART# 2354454S</p>
 <p>RATCHET BINDER 1/2" PART# 4595 3/8" PART# 4594</p>	 <p>4"X30' WINCH STRAP PART# 0430</p>	 <p>SELF CONTAINED RATCHET STRAP 2" – PART# 9511-1</p>

INTERSTATE TRAILERS, INC. **ABS DIAGNOSTICS**

Blink Code Diagnostics

The Meritor WABCO Enhanced Easy-Stop Trailer ABS ECU detects any electrical fault in the trailer ABS. Each of the faults has a code. When a fault occurs, the ECU stores the code for that fault in the memory.

There are two kinds of faults: active and stored. Active faults are those currently existing in the system, such as a broken wire. Stored faults are faults that have occurred but do not presently exist. Active faults can be cleared only after repairs are completed. Stored faults can only be diagnosed with TOOLBOX Software or the Pro-Link 9000.

The ECU signals a malfunction by lighting both the internal and external indicator lamp when a fault exists. The external ABS indicator lamp is usually mounted on the left rear of the trailer, near the rear wheels.

There are two ways to obtain blink codes:

- Ignition Power Activation (recommended method)
- Diagnostic Tool

Although the ECU can store multiple faults in its memory, it only displays one blink code at a time. This is why it is important to recheck the blink codes after repairing a fault. If there are additional codes in the memory, they only blink after you have repaired the first fault.

Stored faults, clear all and end of line test modes are available with the TOOLBOX Software or the Pro-Link 9000.

Ignition Power Activation

Ignition Power Activation is the process of using the vehicle's ignition switch (or interrupting the power on the blue wire by some other means) to display blink codes on the trailer ABS indicator lamp located on the side of the trailer. This method is for constant power vehicles only.

To obtain blink codes using ignition power activation, perform the following procedure:

1. Turn the ignition switch on for no longer than 5 seconds. The ABS indicator lamp will be on.
2. Turn the ignition switch off. The ABS indicator lamp will go out.

3. Turn the ignition switch on. The ABS indicator lamp will then come on, then go out.
4. The blink code will be displayed three times by the ABS indicator lamp on the trailer.

NOTE: For ignition power activation, power is provided by the ignition switch.

BLINK CODES		
Blink Code	Problem Area	Action
3	Sensor BU1	Determine sensor location. Check sensor installation. Make necessary repairs.
4	Sensor YE1	Determine sensor location. Check sensor installation. Make necessary repairs.
5	Sensor BU2	Determine sensor location. Check sensor installation. Make necessary repairs.
6	Sensor YE2	Determine sensor location. Check sensor installation. Make necessary repairs.
7	External ABS modulator valve	Verify proper electrical installation. Check power supply. Make necessary corrections.
9	Internal modulator failure, inlet valve #2	Verify proper installation. If code continues, contact Meritor WABCO for assistance.
10	Internal modulator failure, inlet valve #1	Verify proper installation. If code continues, contact Meritor WABCO for assistance.
11	Internal modulator failure, outlet valve	Verify proper installation. If code continues, contact Meritor WABCO for assistance.
14	Power Supply	Verify proper electrical installation. Check power supply. Make necessary corrections.
15	ECU Failure	Verify proper installation. If code continues, contact Meritor WABCO for assistance.
16	SAE J1708 Failure	Internal failure, contact Meritor WABCO.
17	SAE J2497 (PLC) Failure	Internal failure, contact Meritor WABCO.
18	Generic I/O Failure	Verify proper electrical installation. Check power supply. Make necessary corrections.

For diagnostic and trouble-shooting assistance, call Meritor WABCO at 1-800-535-5560

INTERSTATE

* The Definition of Value *



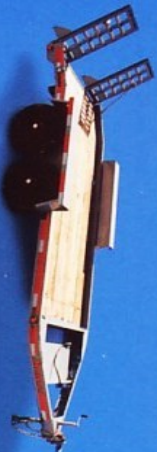
14PBS



40TDL



40APC



10ST/12ST



100SDGN



Ask Your
Sales Representative
for Details

INTERSTATE TRAILERS, INC.

1101 HERITAGE PARKWAY
MANSFIELD, TEXAS 76063
www.interstatetrailers.com



200T

"Take the 10-Ton Challenge"



50/70LBG



50TDL



40DLA



50DLA