

# ***INTERSTATE***

---

**T R A I L E R S , I N C .**

## **PARTS MANUAL FOR LBG SERIES TRAILERS**





**A note from Interstate Trailers to our valued dealers and customers.**

**The scope of this manual is to provide parts and service information for year model 1998 and newer LBG series trailers. We have made our best effort to document the common replacement parts for these trailers. However, Interstate Trailers Inc. builds many custom trailers which may be equipped with parts and options not listed in this manual. Also, trailers older than model year 1998 have some differences and will require help from the factory staff to locate the correct parts. If you encounter such a situation please call our factory at 1-800-433-5384 between the hours of 8 a.m. to 5 p.m. central standard time, M-F excluding holidays. Interstate Trailers recommends that you always have your VIN number (trailer serial) ready when calling a dealer or the factory to assist in locating the correct parts for your trailer. Interstate Trailers will make every effort to help find the correct replacement parts for your trailer and will strive to make your ownership experience as trouble free as possible.**

### **Contact Information**

**Interstate Trailers Inc.  
1101 Heritage parkway  
Mansfield, TX 76063**

**1-800-433-5384 phone  
817-453-2672 parts department fax  
[www.interstatetrailers.com](http://www.interstatetrailers.com) web address**

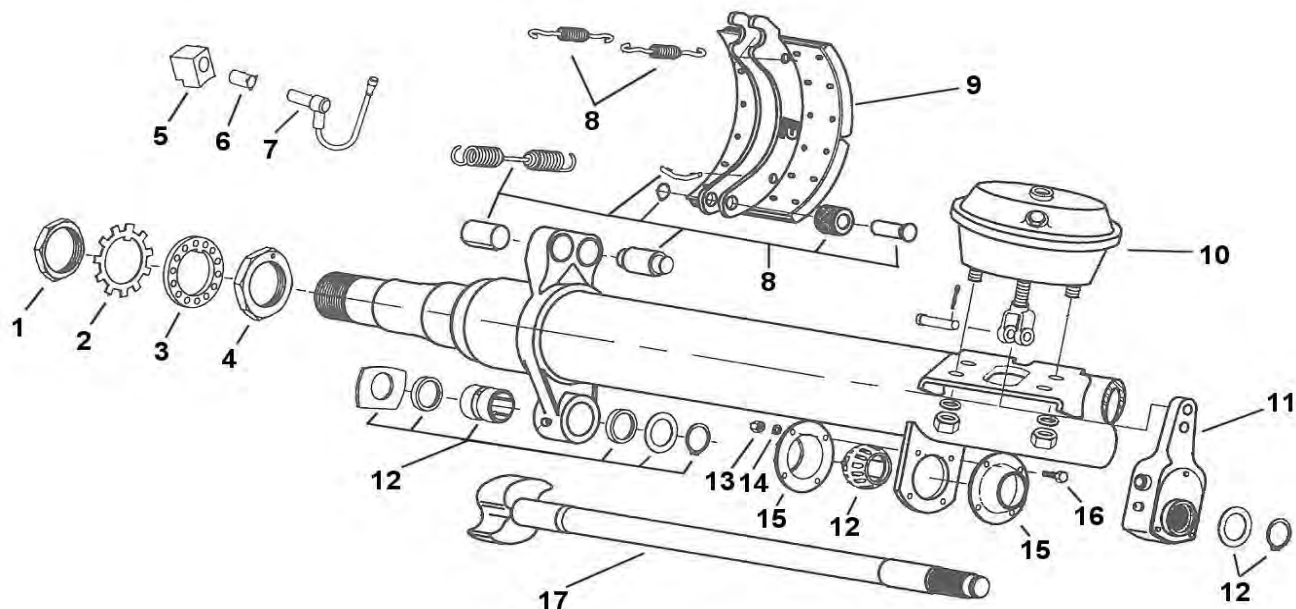
**Thank you!  
The Interstate Trailers team.**



## LBG PARTS MANUAL INDEX

SUBJECT	PAGE
LBG AIR BRAKES	1
HUB PILOTED HUB AND DRUM	2
STUD PILOTED HUB AND DRUM	3
3-SPOKE HUB AND DRUM	4
3-SPOKE DRUM IDENTIFICATION INFORMATION	5
LBG SUSPENSION	6
LBG AIR SYSTEM	7
LBG HARNESS DIAGRAM	8
LBG WIRING DIAGRAM	9
LIGHTING	10
STANDARD RAMPS AND LINKAGE	11
TWO WAY RAMP SPRING ASSIST	12
LBG LANDING GEAR	13
MISCELLANEOUS PARTS	14
DECAL KITS AND APPEARANCE	15
MAINTENANCE SCHEDULE AND SAFETY WARNINGS	16

# LBG AIR BRAKES

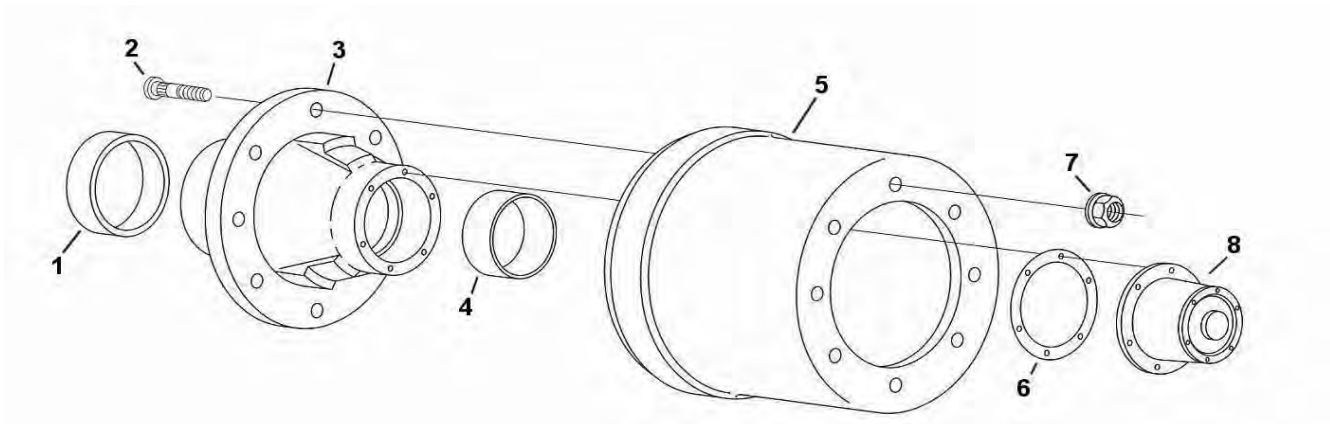


ITEM#	QTY PER WHEEL END	DESCRIPTION	PART NUMBER
1	1	OUTER SPINDLE NUT	5344
2	1	TANG WASHER	5838
3	1	SPINDLE BEARING LOCK WASHER	5837
4	1	INNER SPINDLE NUT	5836
5	VARIABLE	ABS SENSOR MOUNTING BLOCK	7005
6	VARIABLE	ABS SENSOR RETAINER CLIP	7002
7	VARIABLE	ABS SENSOR	7003
8	1	BRAKE SHOE HARWARE KIT	6235
9	2	BRAKE SHOE	5842-1
10	1	AIR CHAMBER, TYPE 30	5205
10*	1	SPRING BRAKE CHAMBER TYPE 30/30	6299
11	1	SLACK ADJUSTER, 28 SPLINE AUTOMATIC	5207
12	1	S-CAM REPAIR KIT	6215
13	4	CAMSHAFT RETAINER PLATE NUT	6290
14	4	CAMSHAFT RETAINER PLATE LOCKWASHER	6289
15	2	CAMSHAFT RETAINER PLATE	6288
16	4	CAMSHAFT RETAINER PLATE BOLT	6287
17	1	S-CAM 1 1/2" 28 SPLINE	CALL FACTORY

\*ITEMS NOT SHOWN ON BREAKDOWN

\*SOME LBG SERIES TRAILERS HAVE 16.5" X 7" BRAKES. IF YOUR TRAILER IS EQUIPPED WITH THESE BRAKES, PLEASE CALL FACTORY FOR PARTS INFO.

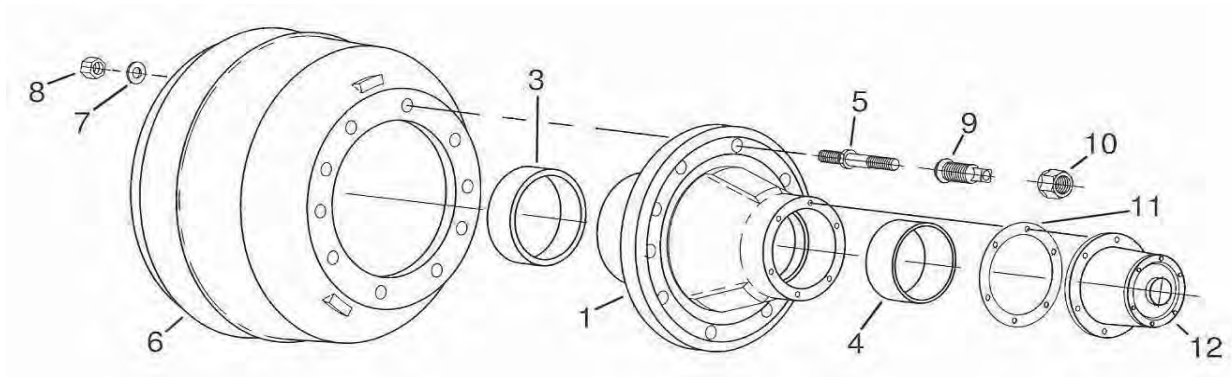
## 8 BOLT HUB PILOTED HUB AND DRUM



ITEM#	QTY PER HUB	DESCRIPTION	PART NUMBER
1	1	INNER BEARING CUP	5834
2	8	WHEEL STUD	7501
3	1	HUB, W/CUPS AND STUDS NON-ABS	7576
3	1	HUB, W/CUPS AND STUDS ABS	7577
4	1	OUTER BEARING CUP	5832
5	1	BRAKE DRUM, OUTBOARD MOUNTED	5535
6	1	OIL CAP GASKET	5157
7	8	FLANGED WHEEL NUT	7502
8	1	OIL CAP WITH GASKET	5831
*	1	INNER BEARING CONE	5835
*	1	OUTER BEARING CONE	5833
*	1	OIL SEAL	5824

\*ITEMS NOT SHOWN ON BREAKDOWN

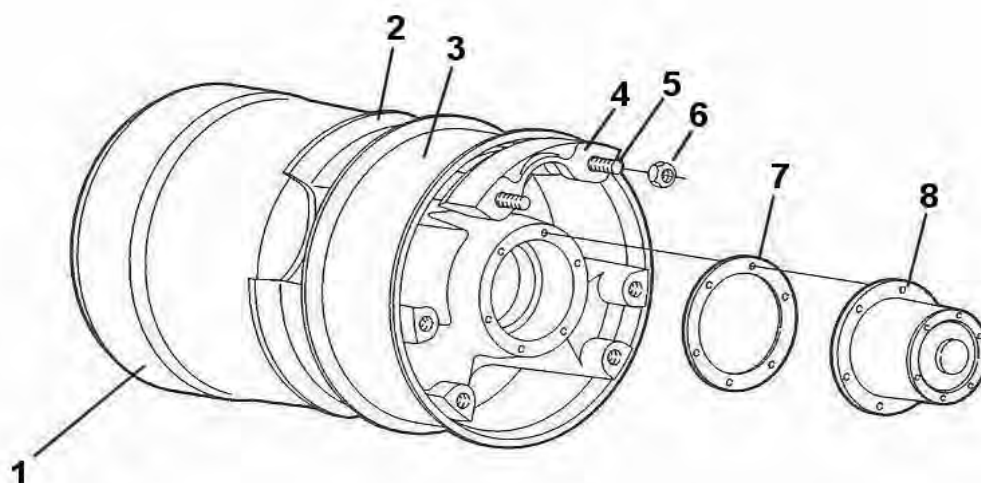
# 10 BOLT "BUDD" HUB AND DRUM



ITEM#	QTY PER HUB	DESCRIPTION	PART NUMBER
1	1	HUB, WITH CUPS AND STUDS R/H NON-ABS	5088-1
1	1	HUB, WITH CUPS AND STUDS L/H NON-ABS	5088-2
1	1	HUB, WITH CUPS AND STUDS R/H ABS	5088-3
1	1	HUB, WITH CUPS AND STUDS L/H ABS	5088-4
3	1	INNER BEARING CUP	5834
4	1	OUTER BEARING CUP	5832
5	10	WHEEL STUD R/H	5537
5	10	WHEEL STUD L/H	5700
6	1	BRAKE DRUM, INBOARD MOUNTED	5534
7	10	DRUM MOUNTING WASHER	5349
8	10	DRUM MOUNTING NUT	5348
9	10	INNER LUGNUT R/H	5226
9	10	INNER LUGNUT L/H	5227
10	10	OUTER LUGNUT R/H	5228
10	19	OUTER LUGNUT L/H	5229
11	1	OIL CAP GASKET	5157
12	1	OIL CAP, WITH GASKET & FILL PLUG	5831
*	1	INNER BEARING CONE	5835
*	1	OUTER BEARING CONE	5833
*	1	OIL SEAL	5824

\*ITEMS NOT SHOWN ON BREAKDOWN

## 3-SPOKE HUB AND DRUM



ITEM#	QTY PER HUB	DESCRIPTION	PART NUMBER
1	1	DRUM, "WEBB" PATTERN SEE NOTES BELOW	5083-1
1	1	DRUM, "DAYTON" PATTERN SEE NOTES BELOW	5083-2
2	1	HUB & DRUM, WITH CUPS,STUDS, CLAMPS NON-ABS	5083
2	1	HUB & DRUM, WITH CUPS,STUDS, CLAMPS ABS	5083-4
3	1	SPACER RING	5346
4	3	CLAMP WEDGE FOR "WEBB" HUB	5045
5	6	CLAMP WEDGE STUD FOR "WEBB" HUB	5087
6	6	CLAMP WEDGE NUT FOR "WEBB" HUB	5224
7	1	OIL CAP GASKET	5157
8	1	OIL CAP, WITH GASKET & FILL PLUG	5831
*	1	INNER BEARING CONE	5835
*	1	OUTER BEARING CONE	5833
*	1	INNER BEARING CUP	5834
*	1	OUTER BEARING CUP	5832
*	1	OIL SEAL	5824

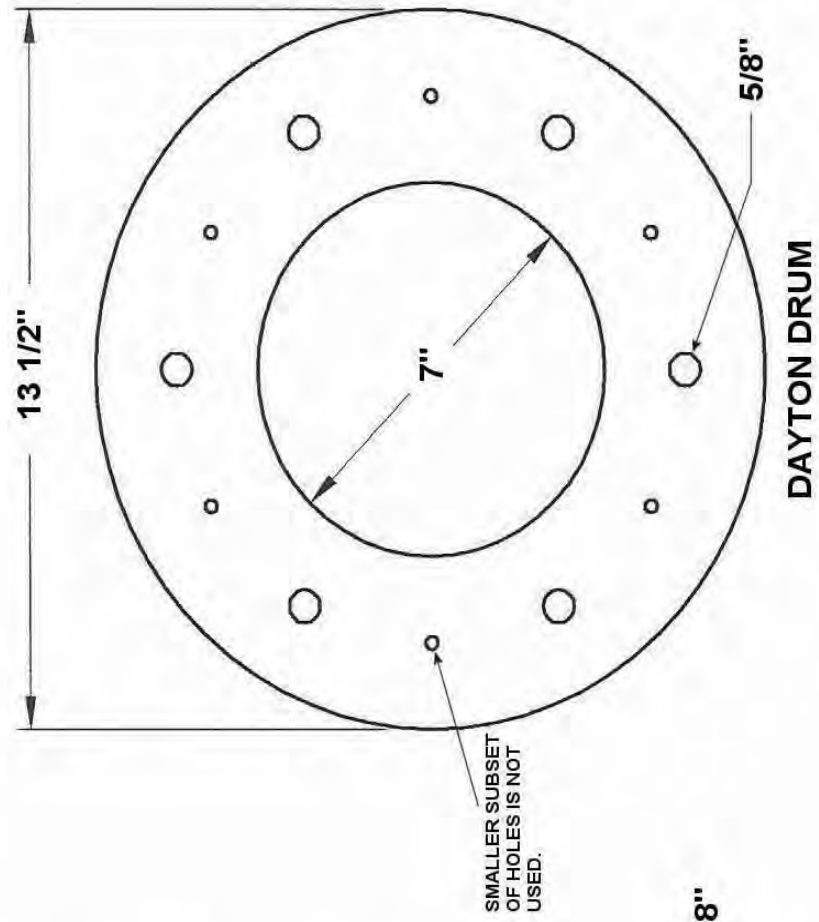
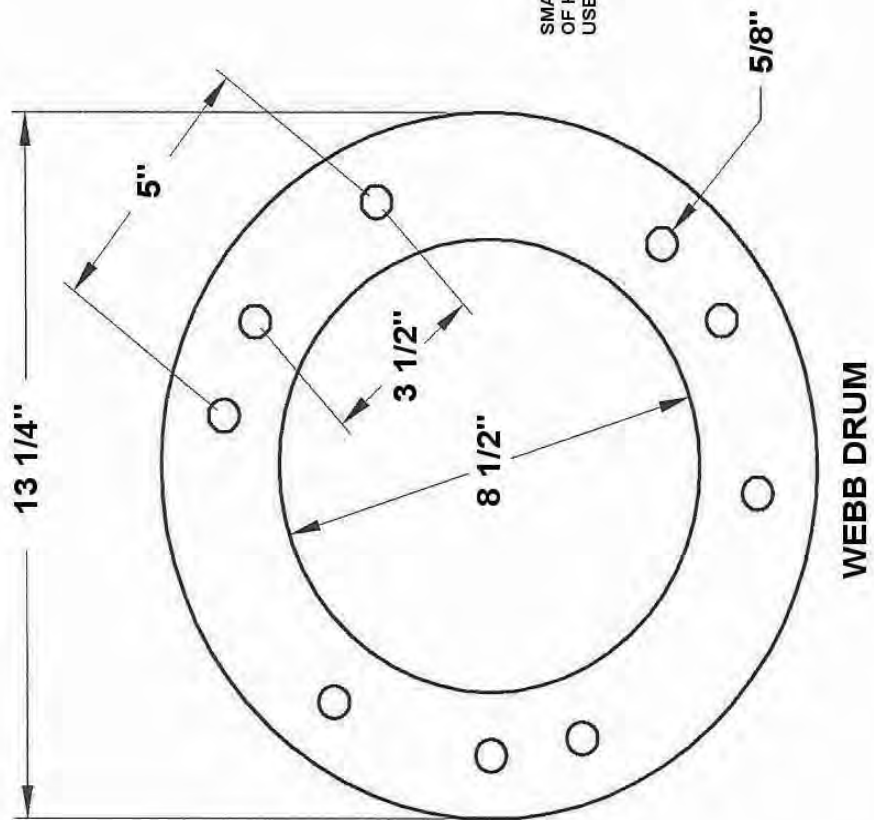
DUE TO SUPPLY ISSUES INTERSTATE TRAILERS EQUIPPED WITH THE 3-SPOKE HUB/WHEEL DESIGN HAVE BEEN BUILT WITH TWO DIFFERENT PATTERN HUBS, THE "DAYTON" AND "WEBB" PATTERNS MENTIONED ABOVE.

THE END USER OF THE TRAILER MUST USE THE IDENTIFIER DIAGRAM ON THE NEXT PAGE OF THE PARTS MANUAL TO SELECT WHICH PATTERN IS FITTED TO THEIR TRAILER. REPLACEMENT DRUMS ARE CURRENTLY AVAILABLE FOR BOTH PATTERNS AS OF THE THE WRITING OF THIS MANUAL (10/2007). HOWEVER, REPLACEMENT HUBS AND SERVICE PARTS FOR THE HUB SUCH AS CLAMP WEDGES, STUDS, AND NUTS ARE ONLY AVAILABLE IN THE "WEBB" PATTERN.

\*ITEMS NOT SHOWN ON BREAKDOWN

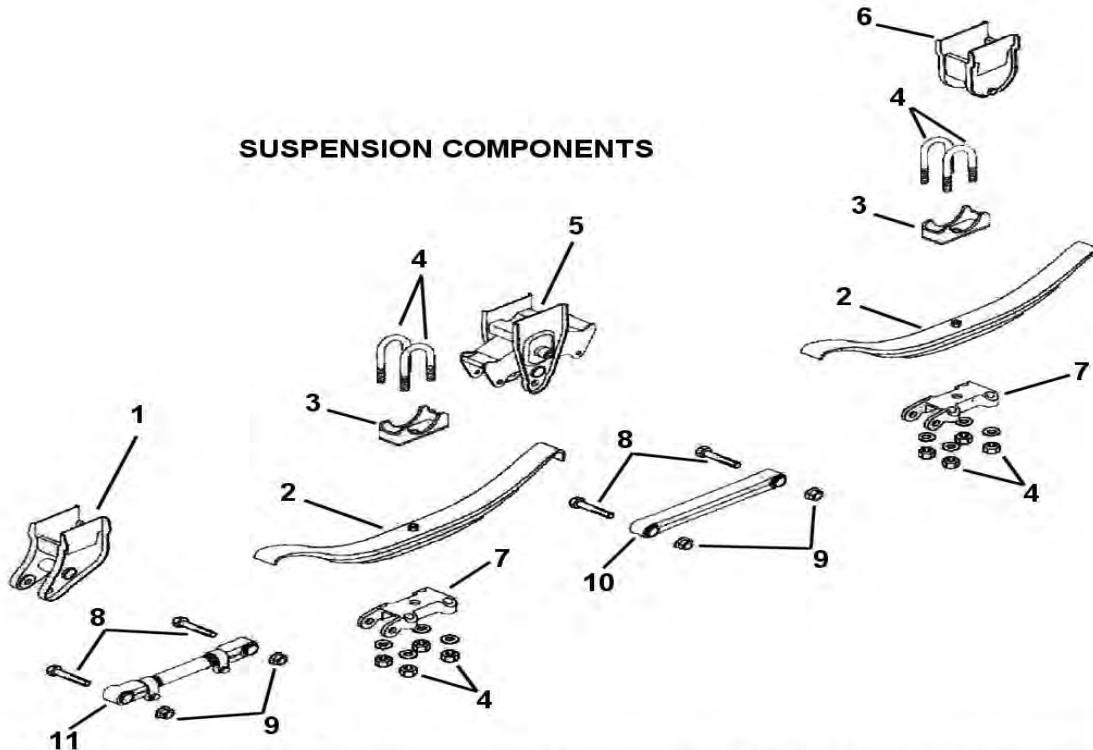
10.2007

### 3 SPOKE WHEEL DRUM IDENTIFICATION INFORMATION

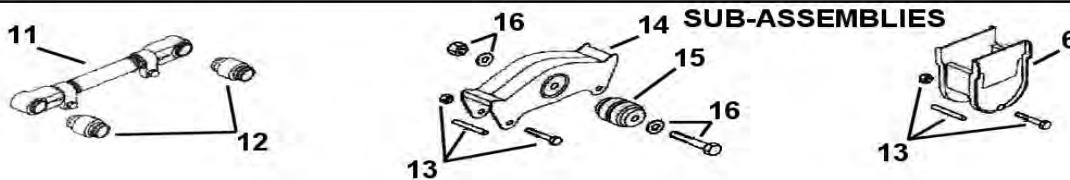


# LBG STANDARD MULTI-POINT SUSPENSION

## SUSPENSION COMPONENTS



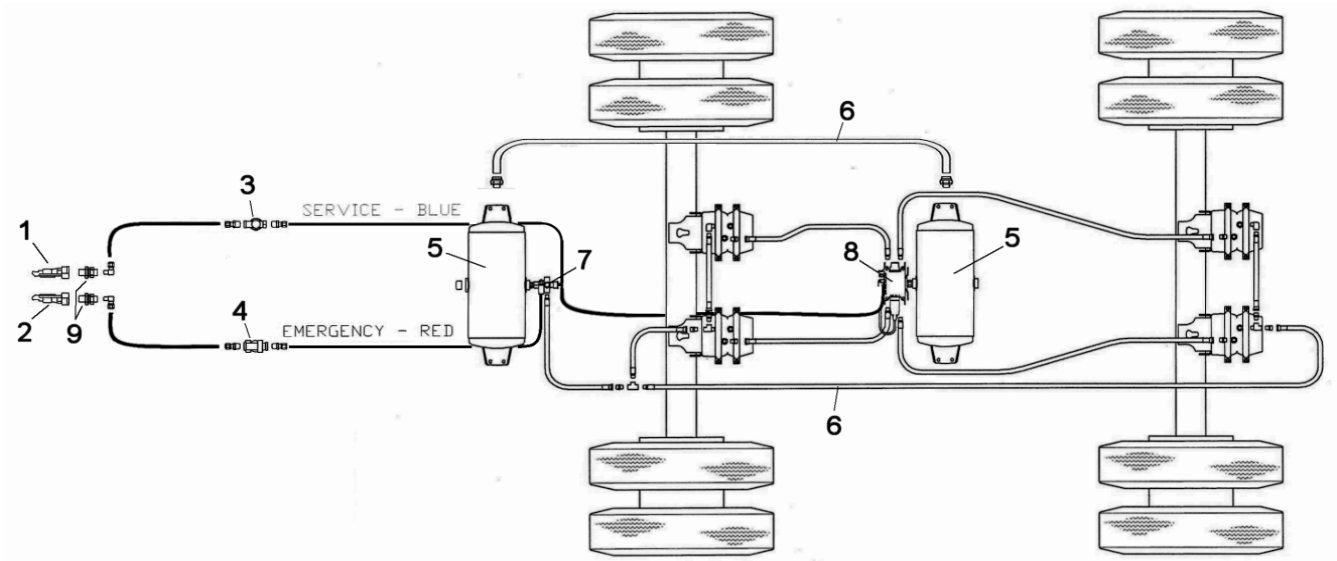
## SUB-ASSEMBLIES



ITEM#	*QTY PER TRAILER	DESCRIPTION	PART NUMBER
1	2	FRONT HANGER	5116
2	4	3-LEAF SPRING	5136
3	4	AXLE SEAT	5127
4	8	U-BOLT WITH NUTS AND WASHERS	5129
5	2	CENTER HANGER WITH EQUALIZER	5114
6	2	REAR HANGER	5117
7	4	BOTTOM PLATE	5128
8	8	TORQUE ARM BOLT	5133
9	8	TORQUE ARM NUT	5134
10	2	FIXED TORQUE ARM	5132
11	2	ADJUSTABLE TORQUE ARM	5131
12	8	TORQUE ARM BUSHING	5132-1
13	6	REBOUND BOLT WITH SLEEVE AND NUT	5125-3
14	2	EQUALIZER WITH BUSHING	5125
15	2	EQUALIZER BUSHING	5125-2
16	2	EQUALIZER BOLT KIT	5125-1

\*LISTED QUANTITIES ARE FOR A STANDARD LBG.  
IF YOUR SUSPENSION DIFFERS FROM DIAGRAM CALL  
FACTORY FOR FURTHER INFORMATION.

# LBG AIR SYSTEM

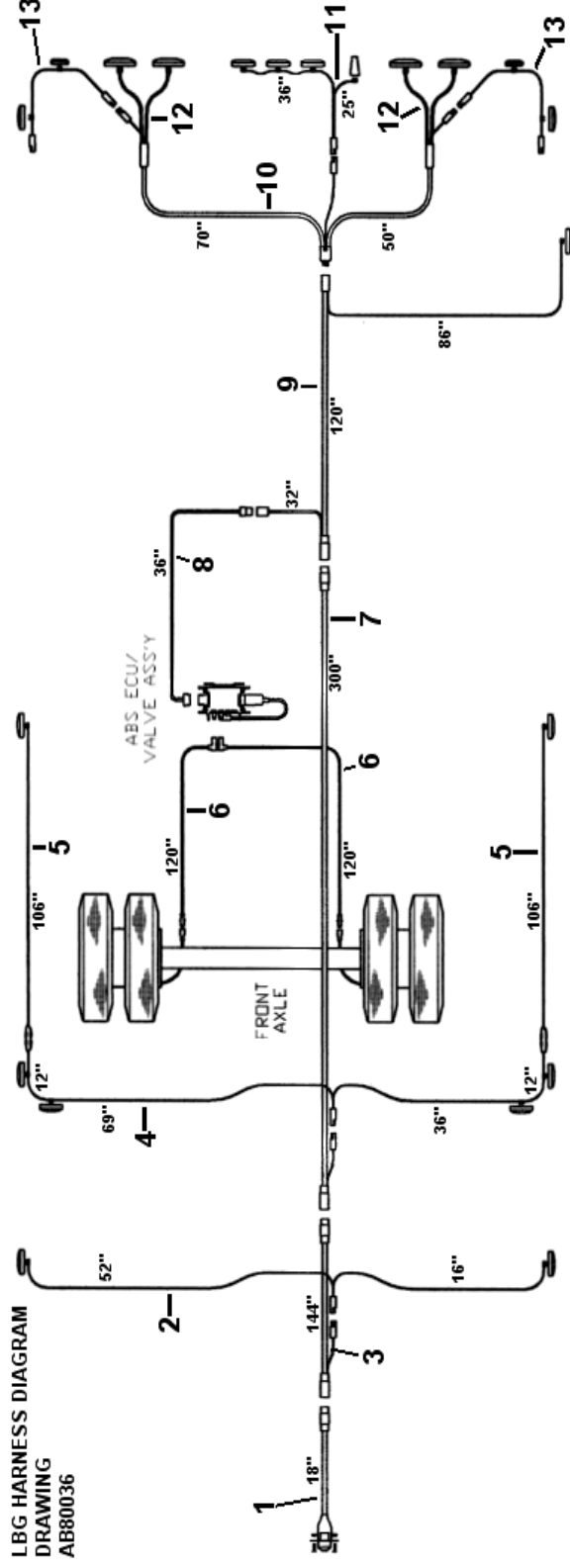


ITEM#	QTY PER TRAILER	DESCRIPTION	PART NUMBER
1	1	SERVICE GLADHAND	5361
2	1	EMERGENCY GLADHAND	5360
3	1	SERVICE AIR FILTER	5331-1
4	1	EMERGENY AIR FILTER	5331
5	2	AIR TANK	5354
6	1	AIR HOSE, VARIOUS SIZES -CALL FACTORY	
7	1	SPRING BRAKE CONTROL VALVE	5353-1
8	1	ABS VALVE/ECU MODULE ASSEMBLY	5353-2
9	1	BULKHEAD FITTING WITH ELBOW	5359

11.2007

# LBG HARNESS DIAGRAM

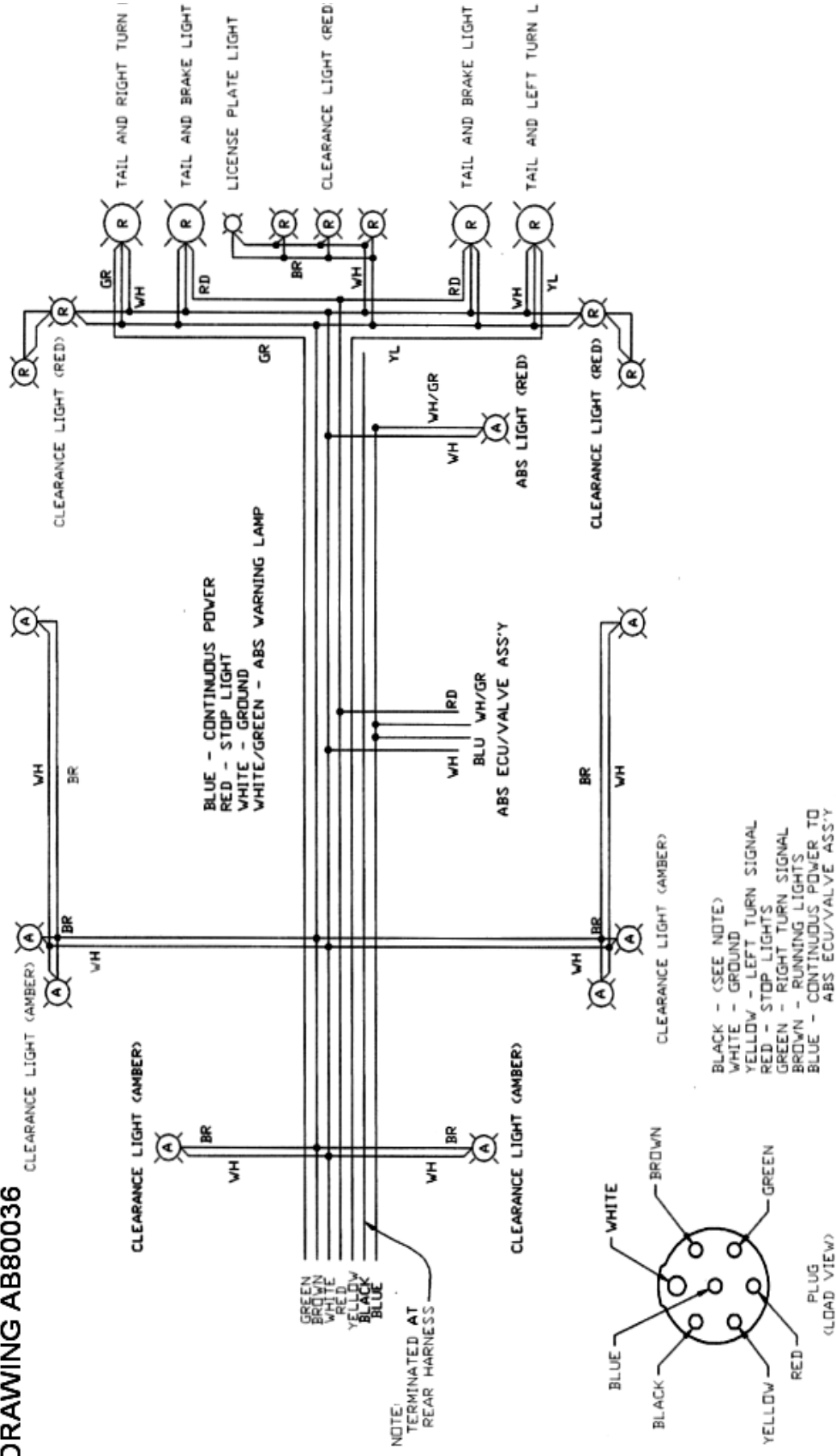
LBG HARNESS DIAGRAM  
DRAWING  
AB80036



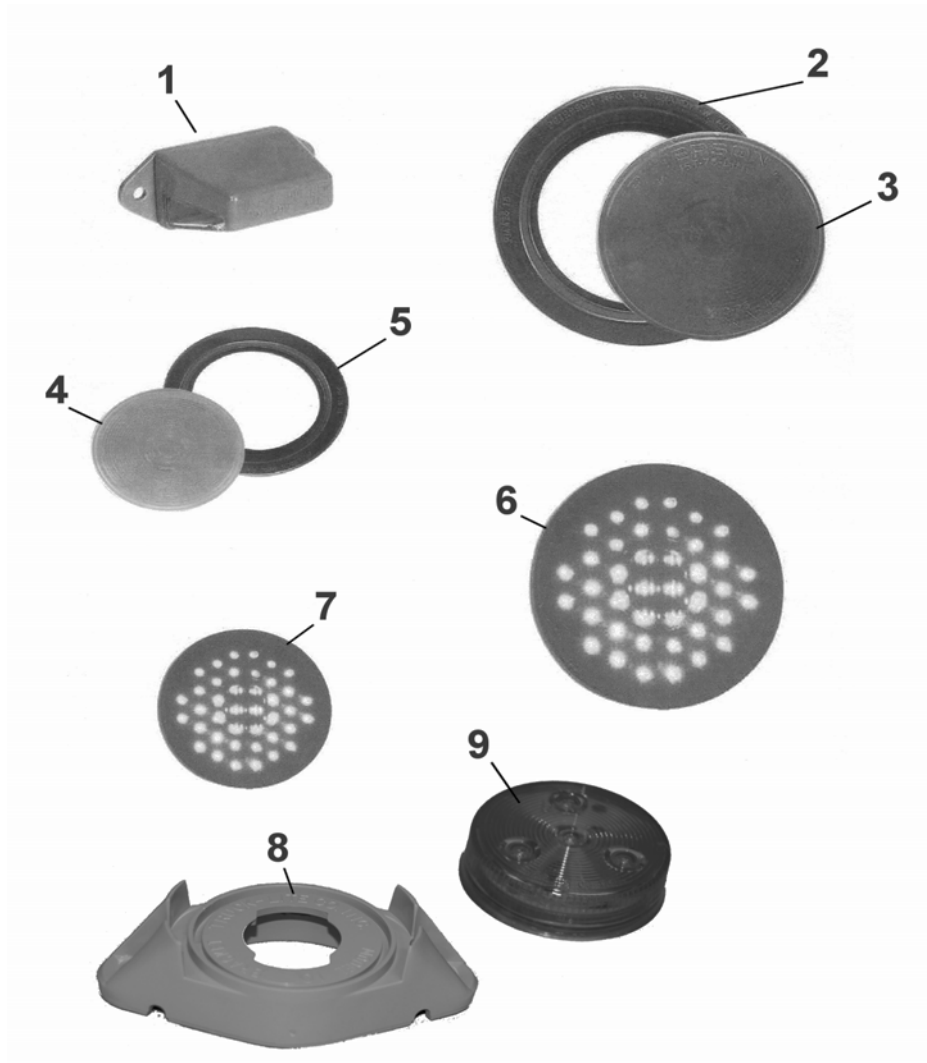
ITEM#	QTY PER TRAILER	DESCRIPTION	PART NUMBER
1	1	FRONT MAIN NOSE HARNESS WITH 7-WAY SOCKET	8161-1
2	1	FRONT (NECK) MARKER LIGHT HARNESS	108-4
3	1	FRONT (NECK) MAIN HARNESS	0101-5
4	1	CENTER (BED) MARKER HARNESS	108-3
5	2	CENTER MARKER EXTENSION HARNESS	0140-1
6	2	120" ABS SENSOR EXTENSION HARNESS	0100-4
7	1	MAIN BED HARNESS	101-4
8	1	ABS ECU POWER WIRE	0100-5
9	1	ABS MAIN HARNESS	0100-1
10	1	REAR HARNESS (INCLUDES ITEM 10,11,12 AND 13)	0104-1
11	1	REAR CENTER MARKER HARNESS	0126-2
12	2	TAIL LIGHT HARNESS (CALL FACTORY FOR FITMENT INFORMATION)	122
13	2	REAR CORNER MARKER HARNESS	0122-2

# LBG WIRING DIAGRAM

## LBG WIRING DIAGRAM DRAWING AB80036



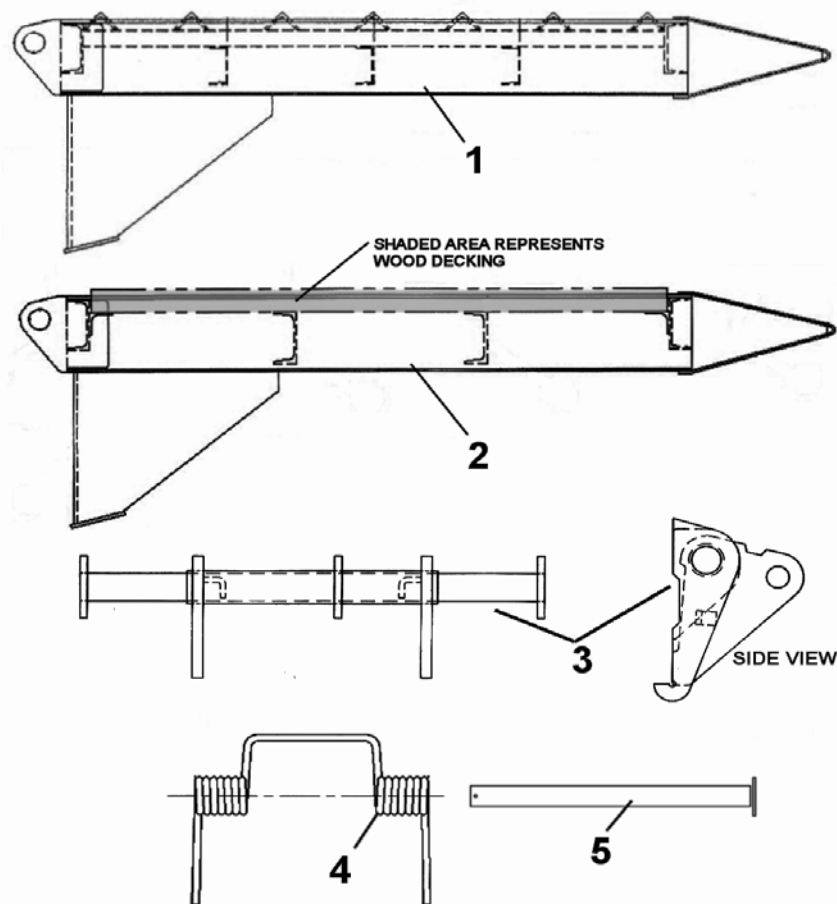
## LIGHTING



ITEM#	DESCRIPTION	PART NUMBER
1	TAG LIGHT	7074
2	4" TAIL LIGHT MOUNTING GROMMET	7067
3	4" INCANDESCANT TAIL LIGHT	7068
4	2" INCANDESCANT MARKER LIGHT, RED	5170
4	2.5" INCANDESCANT MARKER LIGHT, RED	7070
4	2.5" INCANDESCANT MARKER LIGHT, AMBER	7071
5	2" MARKER LIGHT MOUNTING GROMMET	7069-1
5	2.5" MARKER LIGHT MOUNTING GROMMET	7069
6	4" L.E.D. TAIL LIGHT	7068-2
7	2" L.E.D. MARKER LIGHT, RED	5170-2
7	2" L.E.D. MARKER LIGHT, AMBER	7071-3
7	2.5" LED MARKER LIGHT, RED	7070-2
7	2.5" LED MARKER LIGHT, AMBER	7071-2
8	ABS LIGHT MOUNTING BRACKET	7083
9	ABS WARNING LAMP	7071-2

11.2007

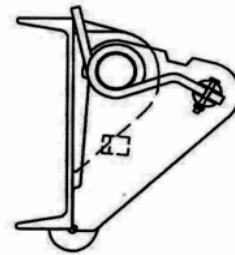
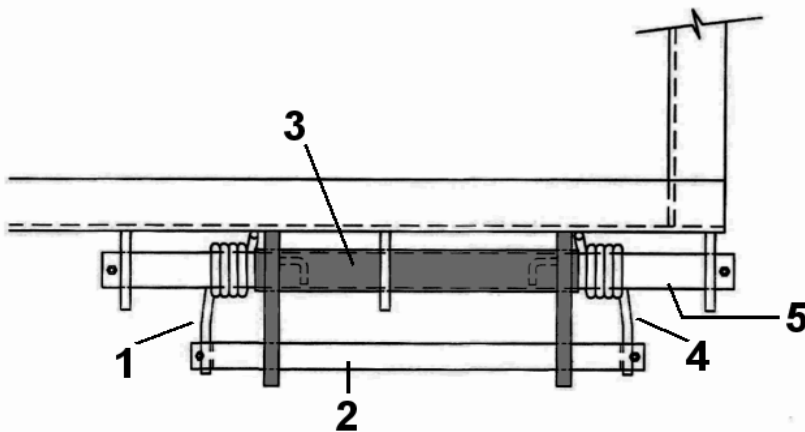
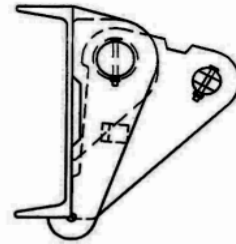
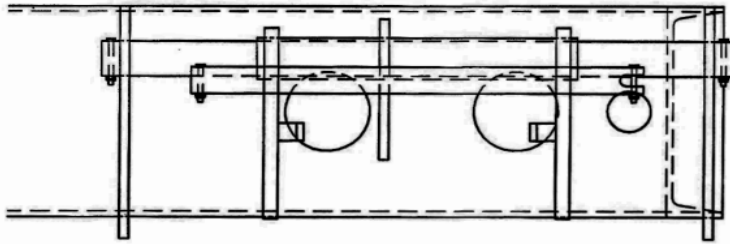
## STANDARD RAMPS AND LINKAGE



ITEM#	DESCRIPTION	PART NUMBER
1	DLA RAMP, 55" WITH STEEL TRACTION PATH	7115-1
2	DLA RAMP, 55" WITH WOOD DECKING	7115
3	RAMP LINKAGE	4765
4	RAMP ASSIST SPRING, TWO COIL	4639
5	RAMP PIVOT PIN	4640-1

\*THIS BREAKDOWN IS INTENDED TO PROVIDE GENERAL INFORMATION FOR THE RAMPS AND LINKAGES FOR STANDARD TRAILERS. THERE ARE MANY OTHER OPTIONAL RAMPS AND LINKAGE ARRANGEMENTS, IF YOURS DIFFERS FROM THE DRAWING PLEASE CALL THE FACTORY FOR MORE UNIT SPECIFIC INFORMATION.

## LBG TWO WAY SPRING ASSIST SYSTEM

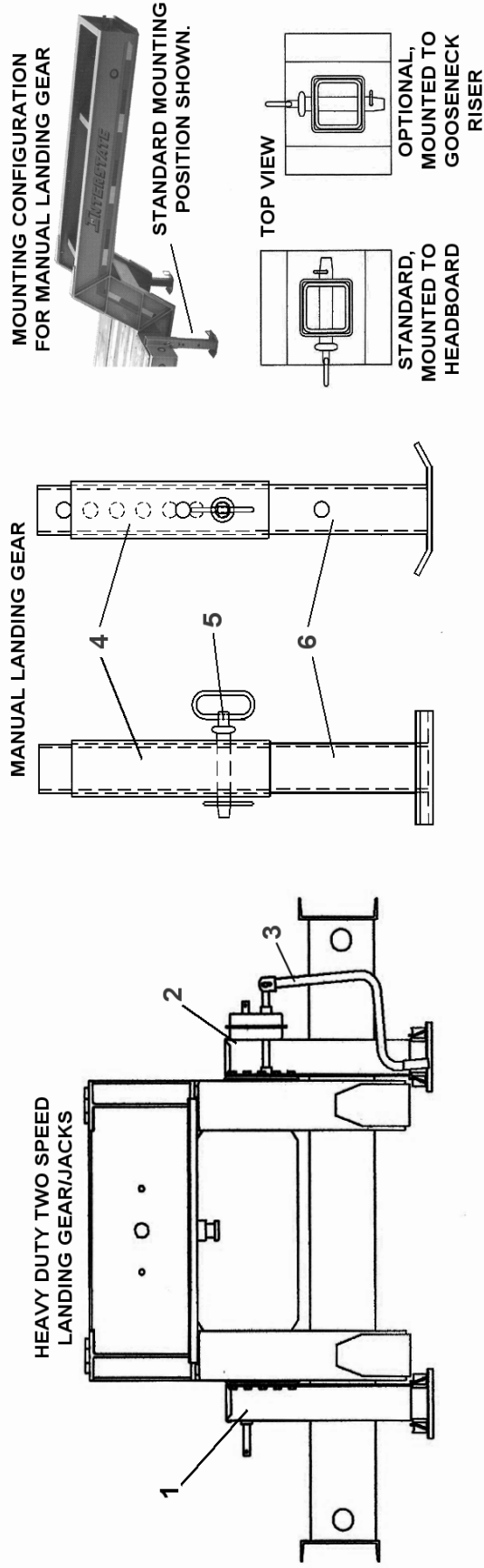


ITEM#	QTY PER RAMP	DESCRIPTION	PART NUMBER
1	1	LEFT SIDE (OF LINKAGE) SPRING	4639-5
2	1	RAMP PIN, SINGLE GROOVE	4640-9
2	1	RAMP PIN, TWO GROOVES	4640-8
3	1	LINKAGE MID SECTION (SHADED)	4895-6
4	1	RIGHT SIDE (OF LINKAGE) SPRING	4639-6
5	1	RAMP PIN, CROSS DRILLED ON EACH END*	4623-2

\*THIS PIN MUST BE MEASURED PRIOR TO ORDERING AS SOME TRAILERS HAVE DIFFERENT WIDTH LINKAGES.

\*THIS TWO WAY SPRING ASSIST BECAME AVAILABLE AS A FACTORY OPTION FOR THE 2005 MODEL YEAR, HOWEVER IT CAN BE RETRO FITTED TO OLDER TRAILERS. CALL FACTORY FOR DETAILS.

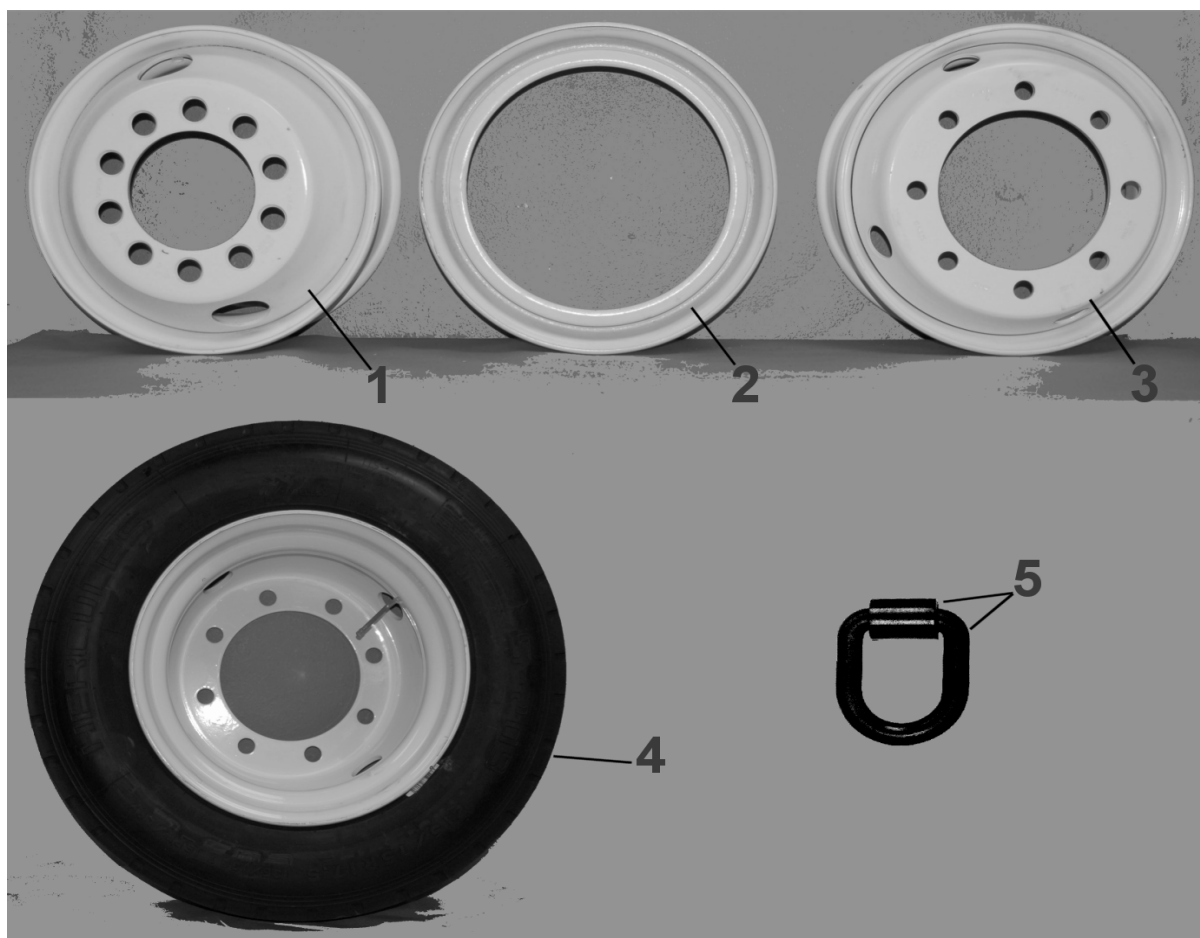
# LBG LANDING GEAR



ITEM#	DESCRIPTION	PART NUMBER
1	OFFSIDE JACK, 25K HEAVY DUTY	7129-9
2	GEARSIDE JACK, 25K HEAVY DUTY	7129-8
3	CRANK HANDLE, 25K HEAVY DUTY JACK	5648
1,2,3	REPLACEMENT JACK KIT, WITH MOUNTING HARDWARE AND HANDLE	7125
4*	OUTER TUBE, MANUAL LANDING GEAR	7125-4
5*	PULL PIN, MANUAL LANDING GEAR	6865
6*	INNER TUBE W/FOOT FOR MANUAL LANDING GEAR	7125-5
4,5,6*	MANUAL LANDING GEAR KIT, 1 EA OF ITEM 4,5,6	7125-2

\*WHEN ORDERING MANUAL LANDING GEAR YOU MUST SPECIFY MOUNTING CONFIGURATION AS SHOWN ABOVE. STANDARD MOUNTING IS DIRECTLY TO HEADBOARD WITH PULL PINS FACING TO THE SIDE. OPTIONAL MOUNTING IS ON THE GOOSENECK RISERS WITH THE PULL PINS FACING TOWARD THE FRONT OF TRAILER.

## MISCELLANEOUS PARTS



ITEM#	DESCRIPTION	PART NUMBER
1	DUAL WHEEL, 17.5" 10 BOLT STUD PILOT	6140
2	DUAL WHEEL RIM, 17.5" FOR THREE SPOKE WHEEL	6139
3	DUAL WHEEL, 17.5" 8 BOLT HUB PILOT	7036
4	TIRE, 215/75R17.5 (TIRE ONLY) 50LBG	6141
4	TIRE, 235/75R/17.5 (TIRE ONLY) 70LBG	6161
4	TIRE AND WHEEL, 215/75/R17.5 WITH 10 BOLT WHEEL	6140-1
4	TIRE AND WHEEL, 235/75/R17.5 WITH 10 BOLT WHEEL	6140-3
4	TIRE AND WHEEL, 215/75/R17.5 WITH SPOKE WHEEL	6139-1
4	TIRE AND WHEEL, 235/75/R17.5 WITH SPOKE WHEEL	6139-2
4	TIRE AND WHEEL, 215/75/R17.5 WITH HUB PILOT WHEEL	7036-2
4	TIRE AND WHEEL, 235/75R/17.5 WITH HUB PILOT WHEEL	7036-1
5	D-RING WITH CLIP	4792

\*PHOTO OF WHEEL AND TIRE ARE FOR ILLUSTRATION PURPOSES ONLY AND MAY APPEAR DIFFERENT THAN THE WHEEL AND TIRE ON YOUR TRAILER.

## LBG DECAL KIT



ITEM#	DESCRIPTION	PART NUMBER
1	DECAL KIT, ALL LBG SERIES TRAILERS *MUST PROVIDE SERIAL NUMBER AND COLOR OF TRAILER WHEN ORDERING.	6094-1

INTERSTATE GRAY PAINT CODE: ANSI 49 GRAY

11.2007

## MAINTENANCE SCHEDULE

TIRES	- CHECK DAILY - MAINTAIN 215/75 R 17.5 TIRES @ 125 PSI COLD.
WHEEL LUGS	- CHECK WEEKLY - TORQUE DEMOUNTABLE RIM CLAMP NUTS TO 210-260 FT. LBS. TORQUE INNER AND OUTER LUG NUTS ON 10 BOLT HUBS TO 450-500 FT. LBS. TORQUE FLANGED LUGNUTS ON HUB PILOT WHEELS TO 275-325 FT. LBS.
WHEEL BEARINGS	- CHECK OIL LEVEL DAILY. USE SAE 80W-90 API-GL-5 OIL
BRAKES	- SHOULD BE CHECKED FOR ADJUSTMENT MONTHLY. BRAKE LININGS SHOULD BE REPLACED WHEN LININGS ARE WORN TO RIVET HEADS (AIR) OR BACKING PLATE (ELECTRIC). DO NOT WEAR LININGS PAST RIVET HEADS OR INTO BACKING PLATE.
SUSPENSION	- THE HUTCHENS 9700 SUSPENSION DOES NOT REQUIRE LUBRICATION. THE SUSPENSION SHOULD BE INSPECTED FOR WEAR PERIODICALLY AND ANY WORN PARTS SHOULD BE REPLACED IMMEDIATELY.
LIGHTS	- CHECK PLUG FOR CONDITION AND TIGHTNESS OF TERMINALS. INSPECT ALL LIGHTS FOR PROPER OPERATION DAILY AND REPLACE BULBS AS NEEDED.
JACK(S)	- CHECK JACK DAILY FOR ANY PHYSICAL DAMAGE OR LACK OF OPERATION DUE TO RUST OR CORROSION. REPLACE IF SEVERELY RUSTED OR DAMAGED. CHECK MOUNTING BOLTS FOR TIGHTNESS AND BE SURE LOCKING HARDWARE IS USED.
SPECIAL NOTE ON PAINT	- IN AREAS WHERE DE-ICING CHEMICALS ARE USED BE SURE TO WASH TRAILER REGULARLY DURING WINTER MONTHS TO PREVENT DAMAGE FROM CORROSIVE DE-ICING AGENTS. INTERSTATE TRAILERS INC. WILL NOT HONOR PAINT WARRANTY CLAIMS IF DAMAGE IS DETERMINED TO BE CAUSED BY PROLONGED CONTACT WITH DE-ICING AGENTS.

### \*WARNINGS\*

*WARNING*	- BE SURE TRAILER IS CONNECTED TO TOW VEHICLE WHEN LOADING AND UNLOADING MACHINERY. LOCK TRUCK BRAKES BEFORE LOADING AND UNLOADING
*WARNING*	- CHECK TIRE INFLATION DAILY
*WARNING*	- CHECK WHEEL LUGS WEEKLY
*WARNING*	- USE CAUTION WHEN RAISING OR LOWERING REAR RAMPS. <b>DO NOT PLACE HANDS OR FEET UNDER RAMPS WHEN RAISING OR LOWERING!</b>
*WARNING*	- TRAILER SHOULD BE LEVEL WHEN FULLY LOADED. ADJUST HITCH TO MAKE TRAILER LEVEL WHEN LOADED.

[illegible]